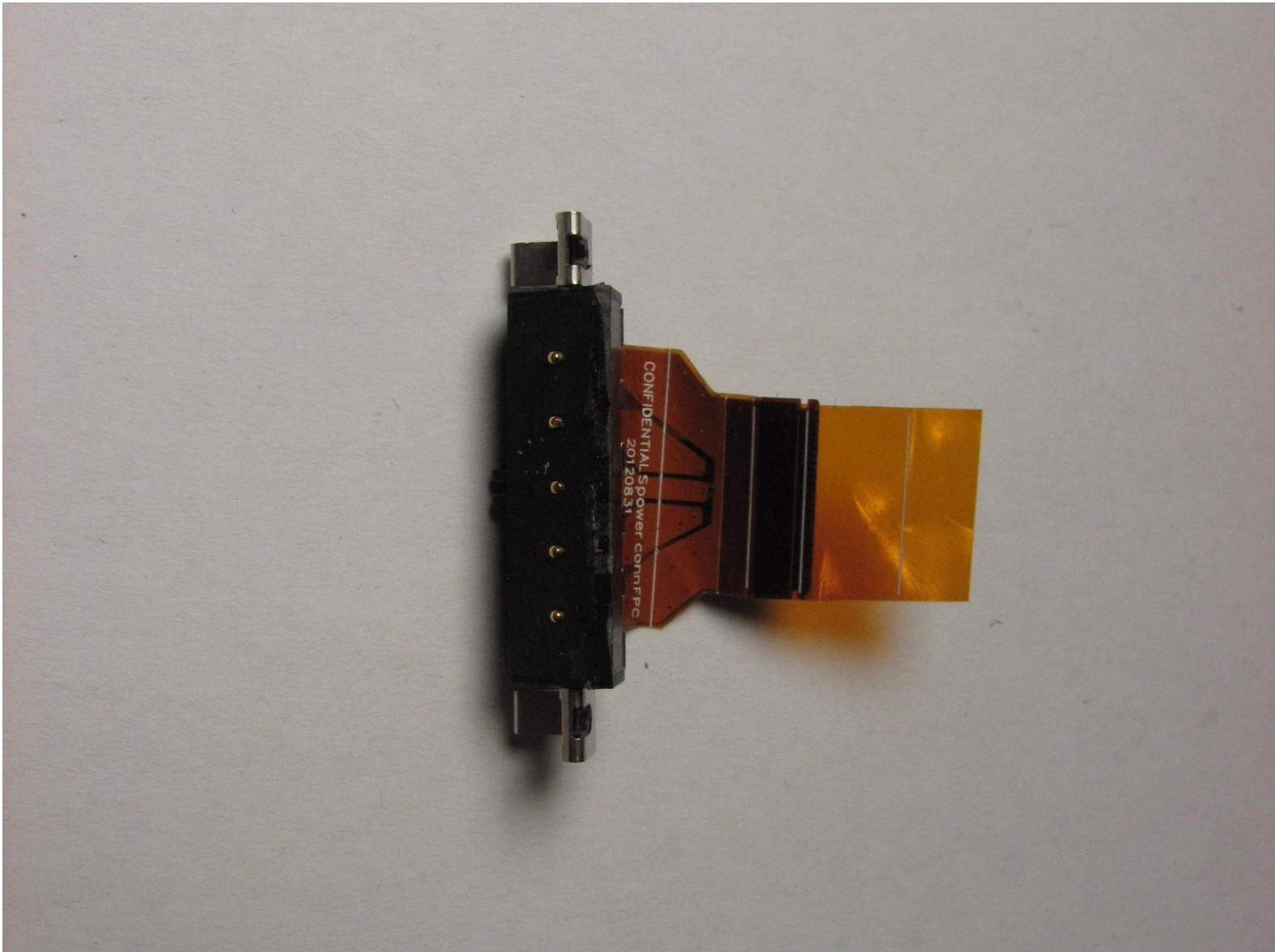




Microsoft Surface Pro Charging Port Replacement

This guide will show you how to replace your faulty charging port.

Written By: Jonathan Choi



INTRODUCTION

***In order to access the charging port, refer to steps 1 - 6 in the Microsoft Surface Pro Teardown Guide to remove the screen.**

[Teardown Guide](#)



TOOLS:

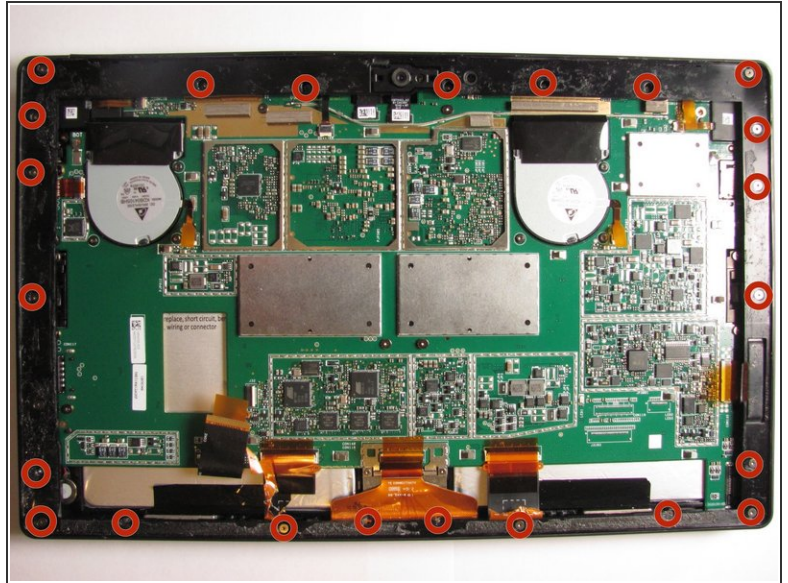
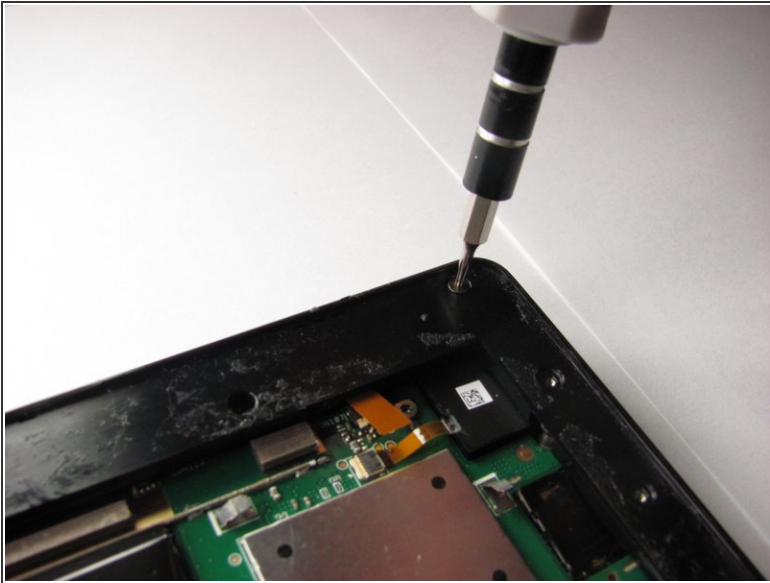
- [T5 Torx Screwdriver](#) (1)
- [Spudger](#) (1)
- [iFixit Opening Tools](#) (1)
- [Tweezers](#) (1)
- [T2 Torx Screwdriver](#) (1)



PARTS:

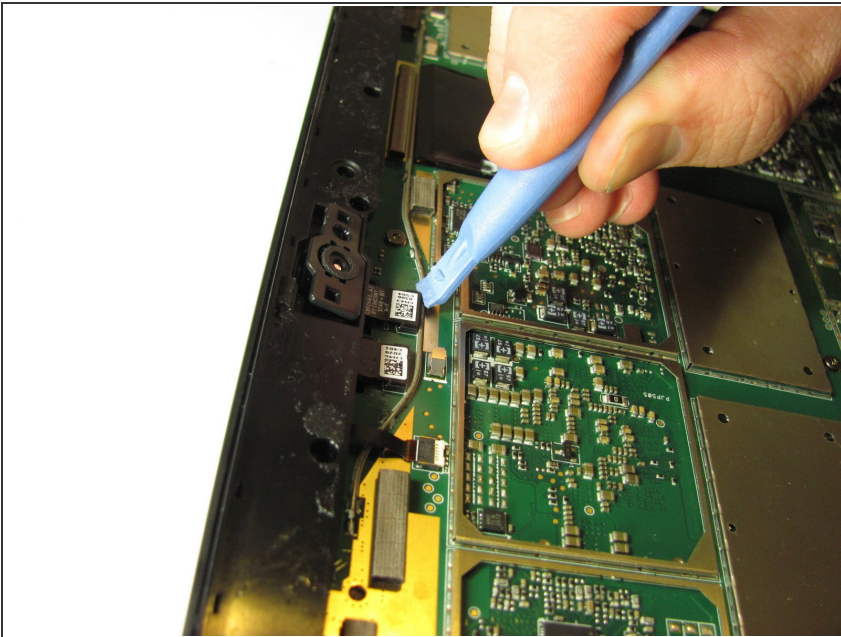
- [Surface Pro Charging Port](#) (1)

Step 1 — Charging Port



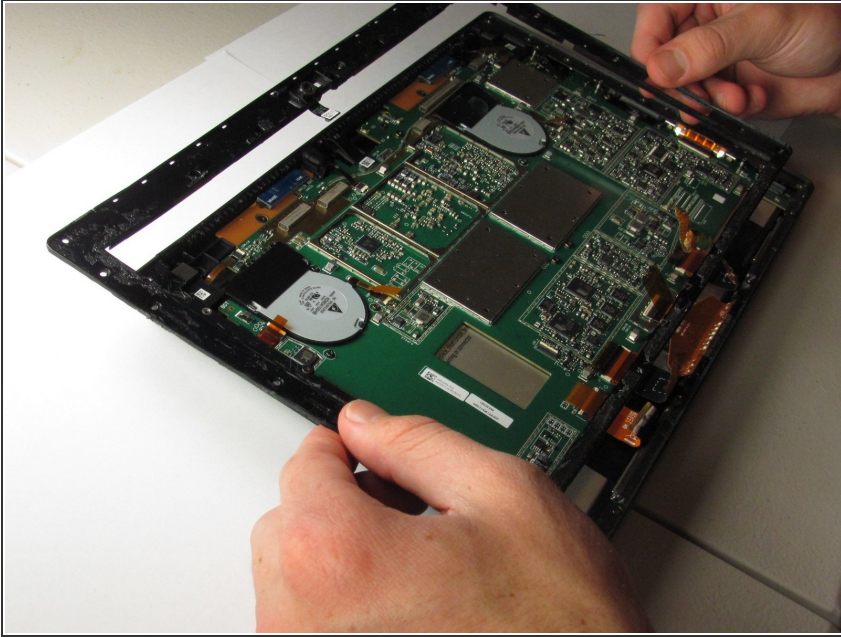
- Using a T5 Torx screwdriver, unscrew a total number of 23 screws located on the outside panel of the Surface Pro.

Step 2



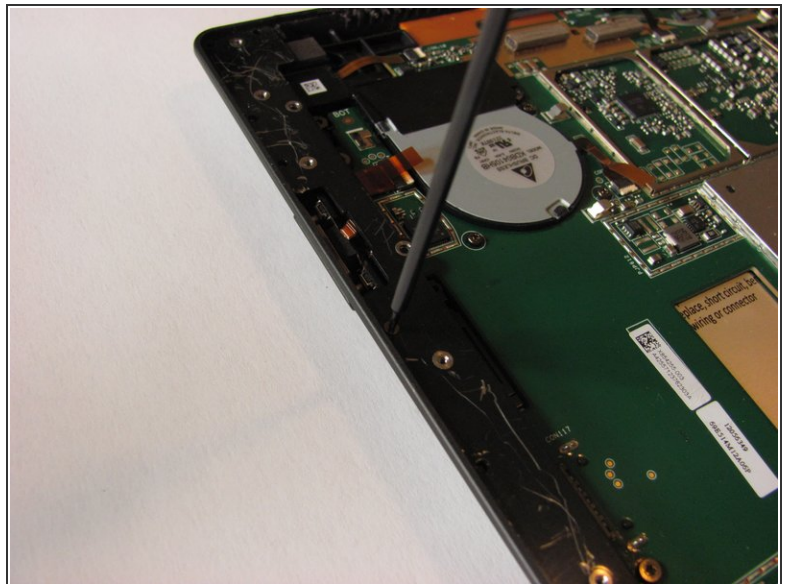
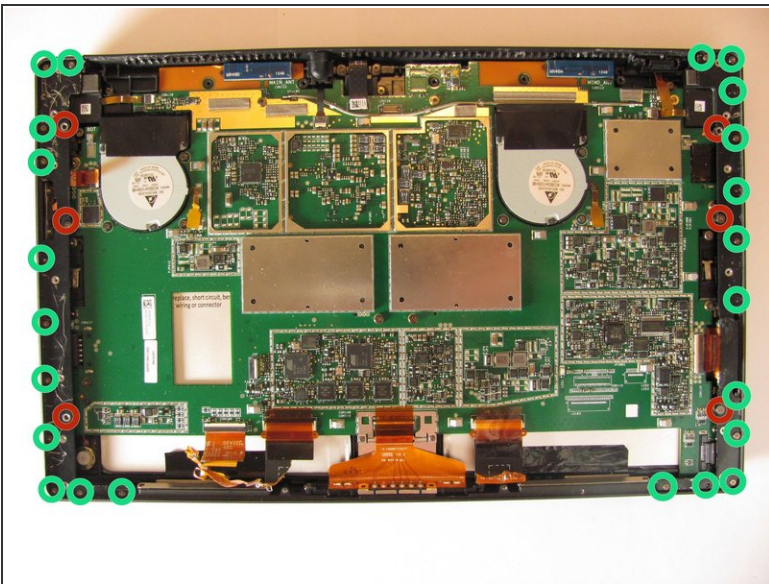
- Use the plastic opening tool or fingers to pry out the front camera.

Step 3



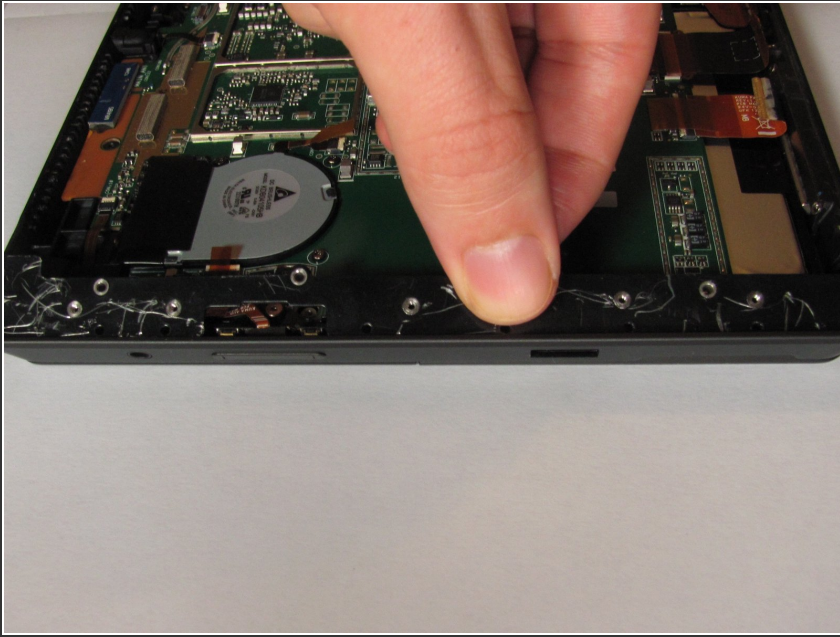
- Lift the outside panel from the Surface Pro

Step 4



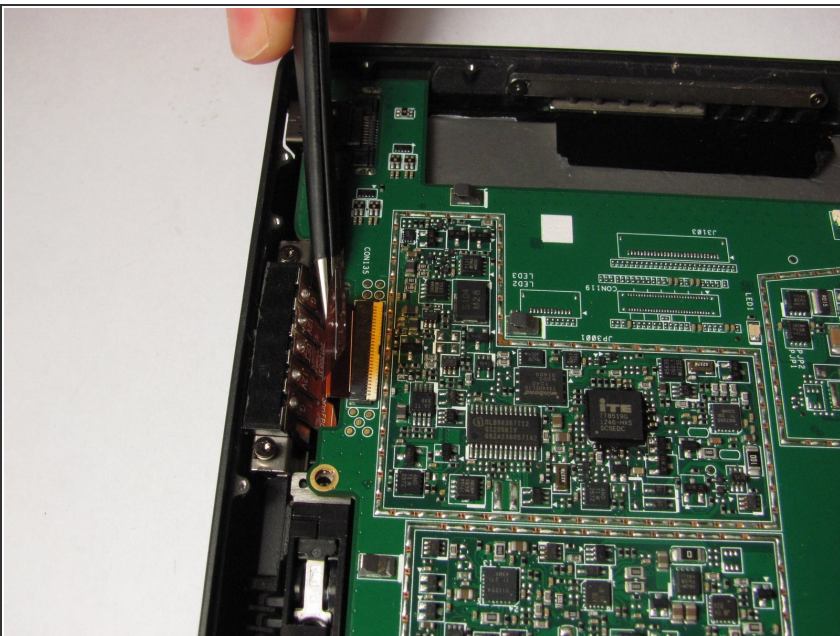
- Use the T5 torx screw driver to unscrew the 6 T5 screws in the left and right outside metal panels
- Use the T2 torx screw driver to unscrew the 23 T2 screws on the left and right outside metal panels

Step 5



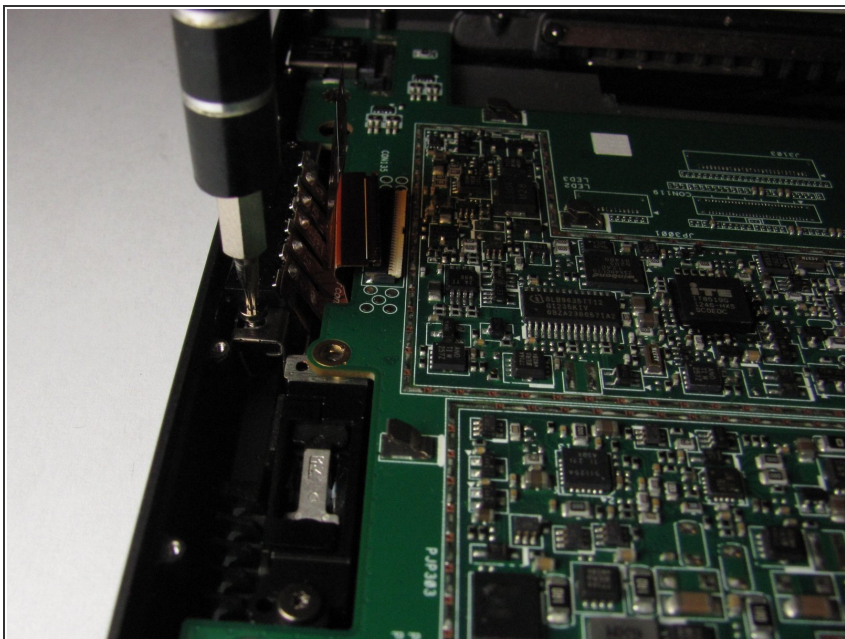
- Pull out left and right metal panels with hands

Step 6



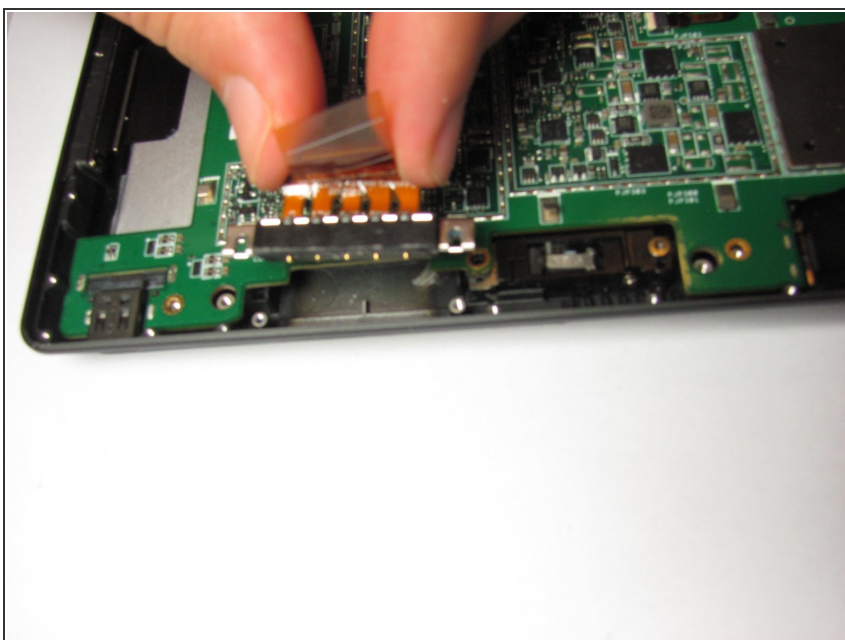
- Pull out the orange charging port strip using tweezers

Step 7



- Unscrew the two T5 torx screws located on each side of the charging port.

Step 8



- Once you have unscrewed the charging port, you can gently pull it out with your hands.

To reassemble your device, follow these instructions in reverse order.