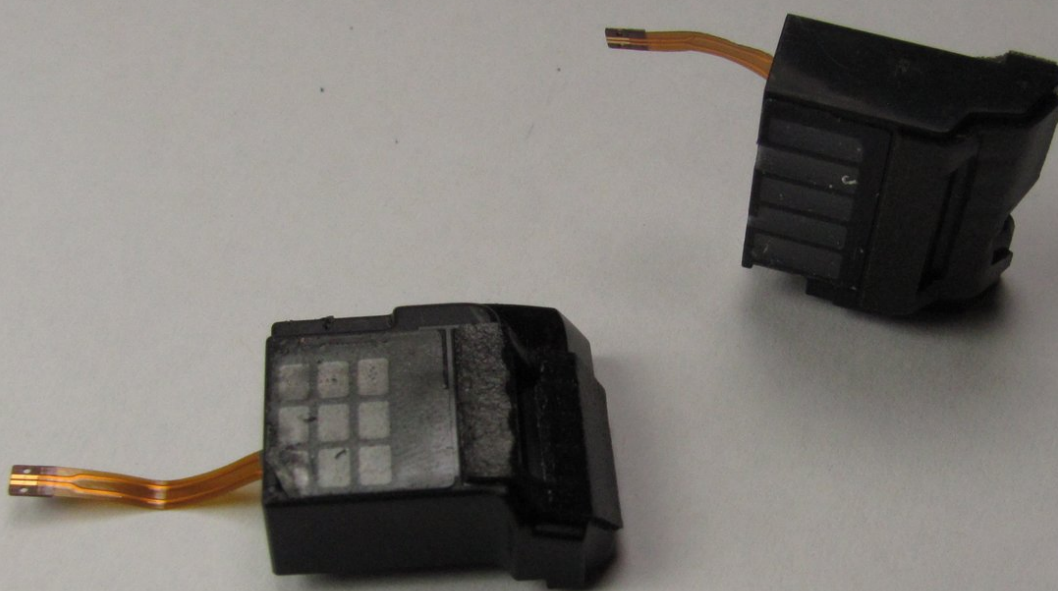




Microsoft Surface Pro Speaker Replacement

This guide shows you how to install both the left and right speakers on the Surface Pro

Written By: Jonathan Choi



INTRODUCTION

***In order to access the speakers, refer to steps 1 - 5 in the Microsoft Surface Pro Teardown Guide to remove the screen.**

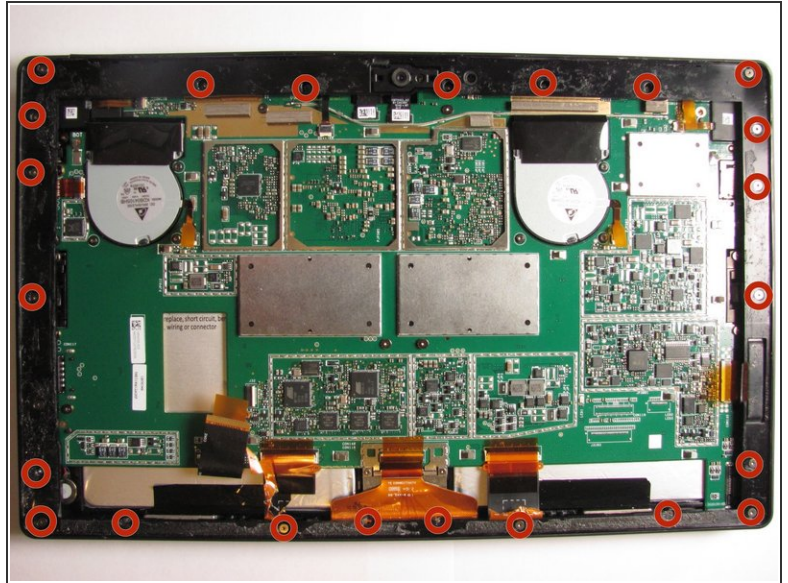
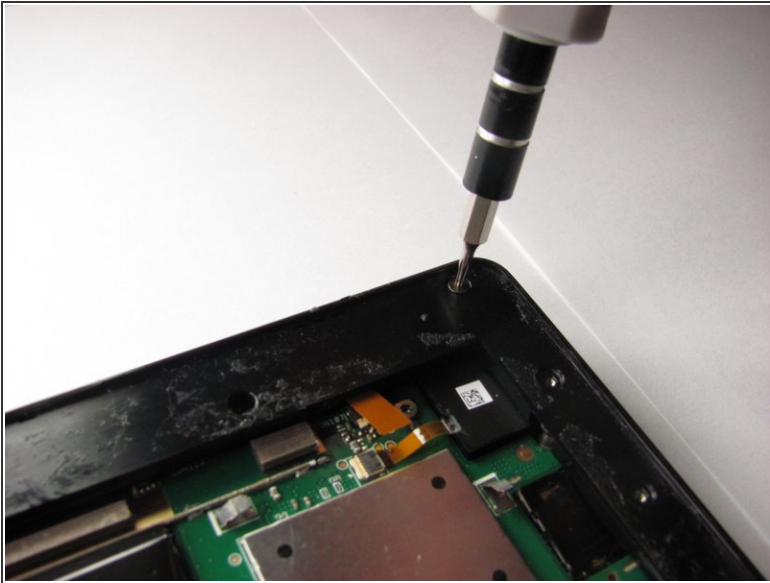
[Teardown Guide](#)



TOOLS:

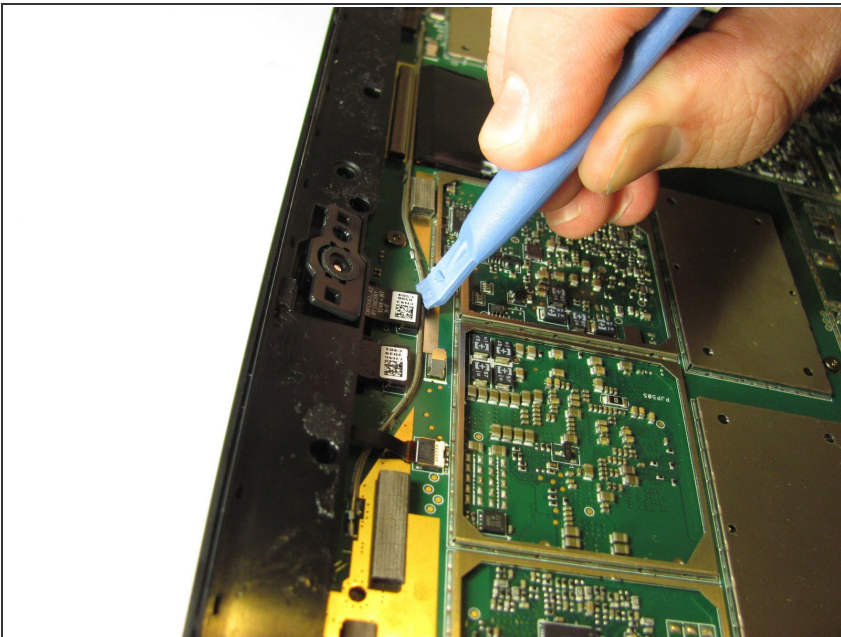
- [T3 Torx Screwdriver](#) (1)
 - [T2 Torx Screwdriver](#) (1)
 - [Tweezers](#) (1)
 - [Spudger](#) (1)
-

Step 1 — Speaker



- Unscrew all the 23 screws located on the outside panel with the T5 torx screw driver

Step 2



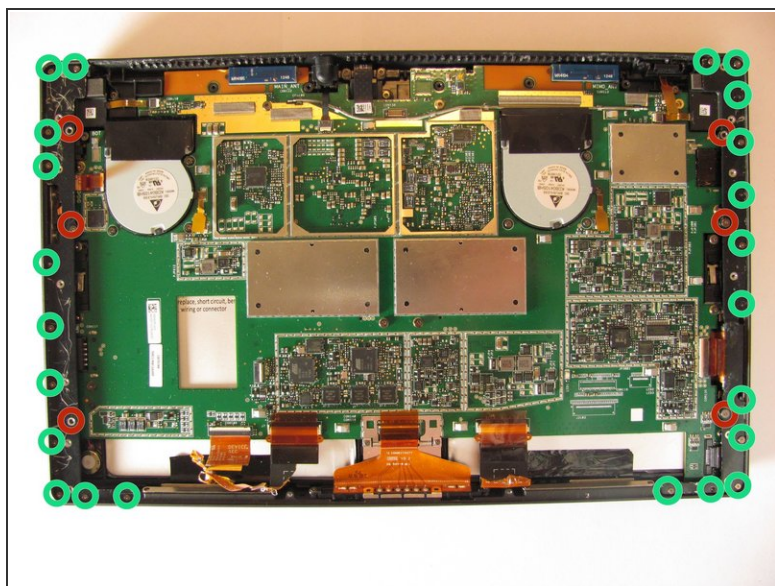
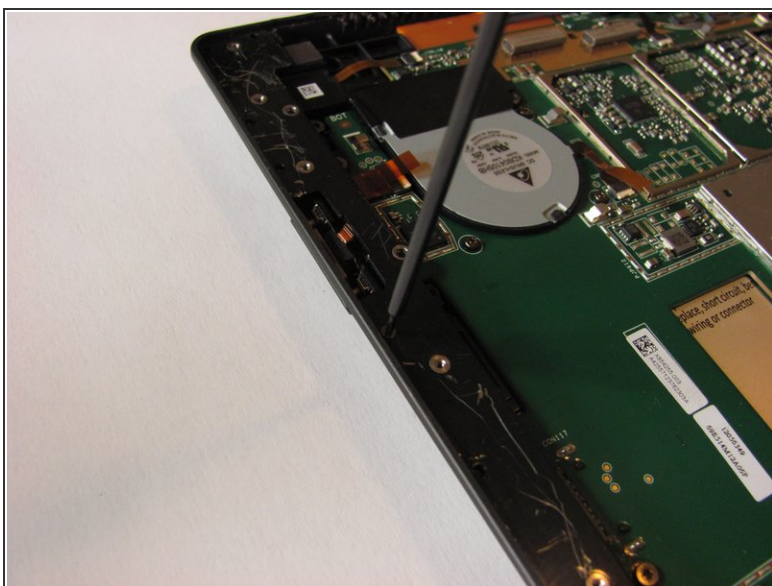
- Use the plastic opening tool to pry out the cameras

Step 3



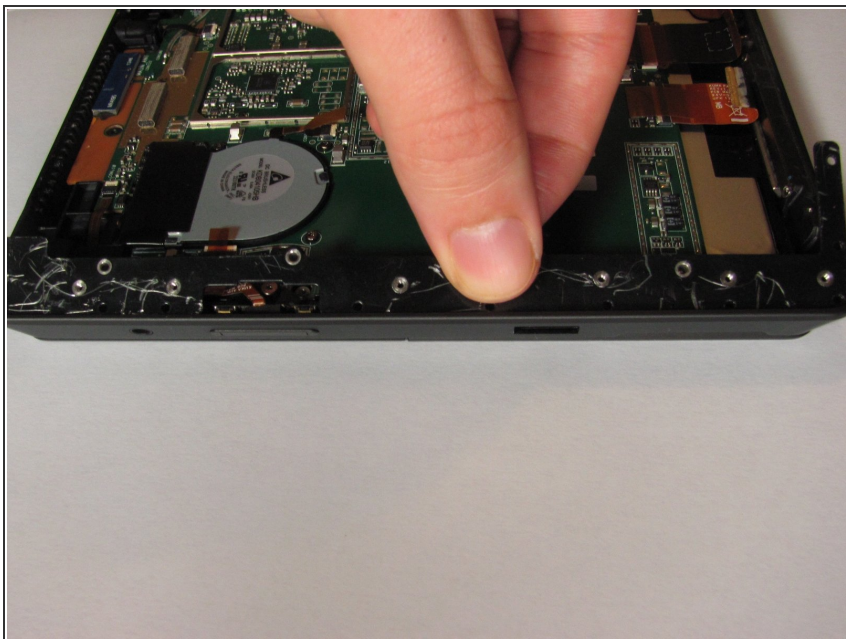
- Pull the outside panel with your hands from the Surface Pro

Step 4



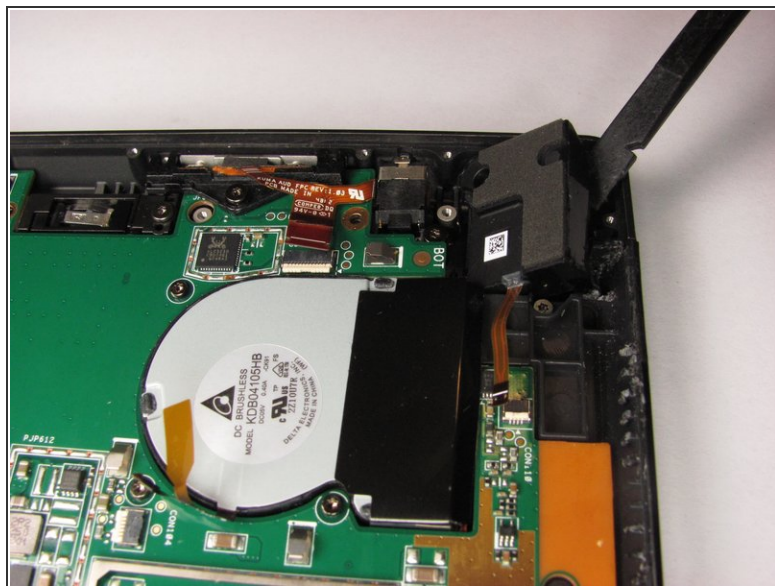
- Use the T5 torx screw driver to unscrew the 6 T5 screws located on the left and right metal panels
- Use the T2 torx screw driver to unscrew the 23 T2 screws located on the left and right metal panels

Step 5



- Gently pull out left and right metal panels with hands

Step 6



- Disconnect the two speakers with tweezers
- Gently pry out the speakers with spudger

To reassemble your device, follow these instructions in reverse order.