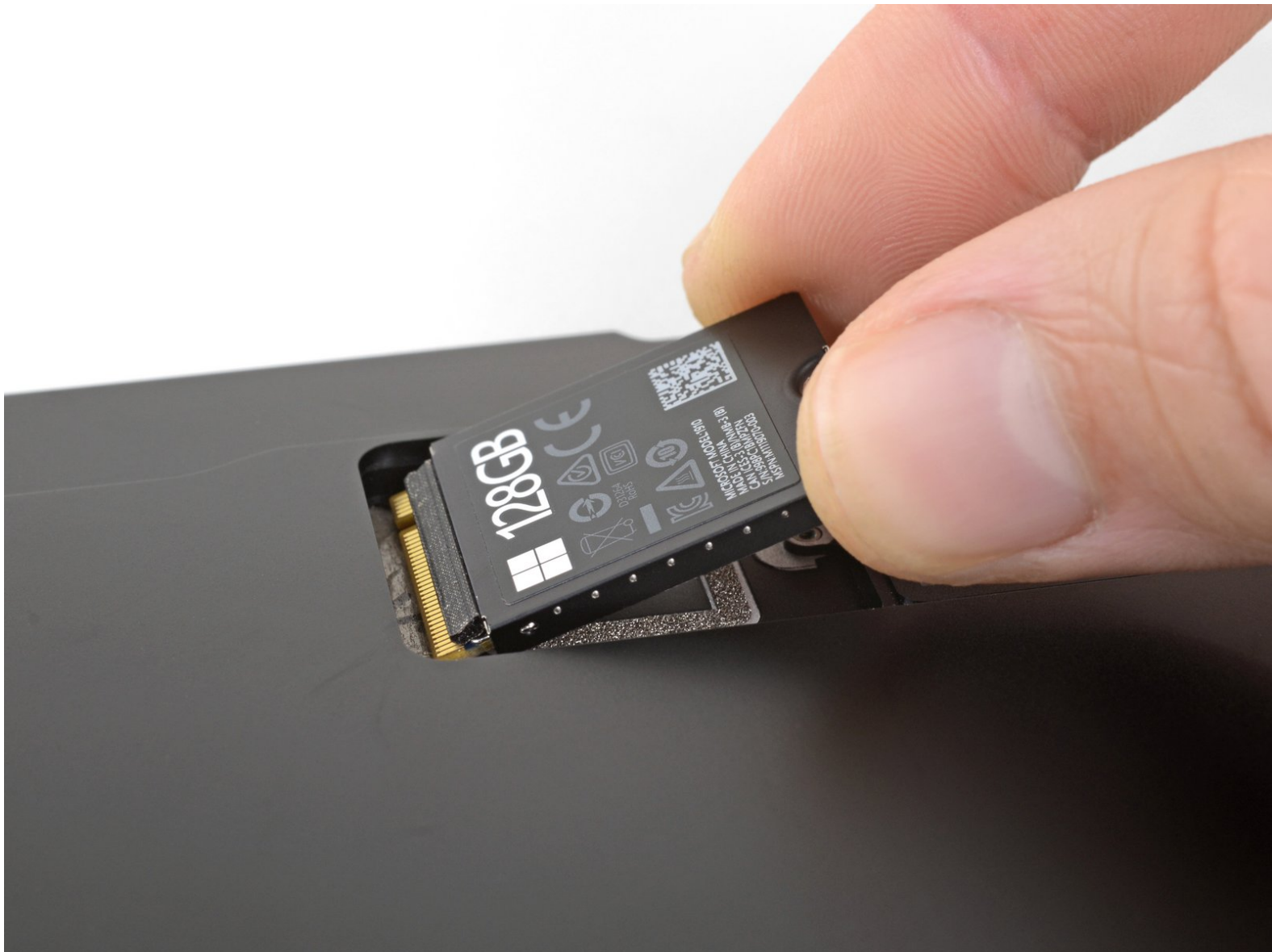




Microsoft Surface Pro X SSD Replacement

Remove or replace the SSD in a Microsoft Surface Pro X.

Written By: Adam O'Camb



INTRODUCTION

Use this guide to remove the SSD in a Microsoft Surface Pro X. The SSD has proprietary shielding, so normal M.2 2230 drives may not be fully compatible.

Before you perform this repair, if at all possible, back up your existing SSD. Then, either familiarize yourself with internet recovery or create a bootable external drive so you'll be ready to install the operating system onto your new drive and migrate your data to the new SSD.



TOOLS:

- [SIM Card Eject Tool](#) (1)
 - [Spudger](#) (1)
 - [T3 Torx Screwdriver](#) (1)
-

Step 1 — Open the kickstand



- ❗ Make sure your Surface Pro X is turned off, and laying screen-side down on a soft surface.
- Lift the kickstand to at least a 90° angle, so that it is perpendicular to the Surface's screen. The further you open the hinge, the easier it is to access the SSD and SIM card door.

Step 2 — Open the SSD and SIM card door



- Insert a SIM card eject tool or a paperclip into the small hole in the bottom right corner of the SSD and SIM card door, located near the bottom right corner of the Surface.
- Press firmly to open the door.

Step 3 — Remove the SSD and SIM card door



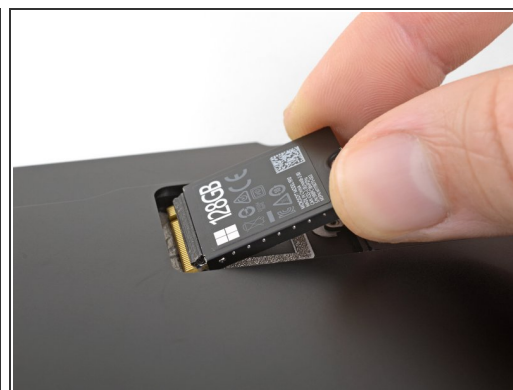
- Lift the SSD and SIM card door and remove it from the Surface.
- ★ When reinstalling the door, [first insert the end of the door with the small tab into the Surface just above the SSD](#), then lay the rest of the door down.

Step 4 — Remove the SSD screw



- Remove the single 2.4 mm T3 Torx screw securing the SSD.

Step 5 — Remove the SSD



- Use your finger or a spudger to lift the SSD just enough that it clears the edges of its recess.
 - ⚠ Don't lift the SSD more than you have to—doing so may damage the SSD or its socket.
- Gently pull the SSD straight out of its socket.
- ☑ When reinstalling the SSD, be sure it is properly seated before reinstalling its retaining screw.

To reassemble your device, follow the above steps in reverse order.

Take your e-waste to an [R2 or e-Stewards certified recycler](#).

Repair didn't go as planned? Check out our [Answers community](#) for troubleshooting help.