



Microsoft Xbox 360 Wireless Gaming Receiver, fuse replacement

If your receiver is completely dead(does not illuminate led) and does not show up in the device manager at all, this guide is for you.

Written By: Endorph



INTRODUCTION

Apologies for the state of this guide, it was created in minutes, though I hope it can be of help, please feel free to improve it!



TOOLS:

- [Soldering Iron](#) (1)
- [Solder](#) (1)



PARTS:

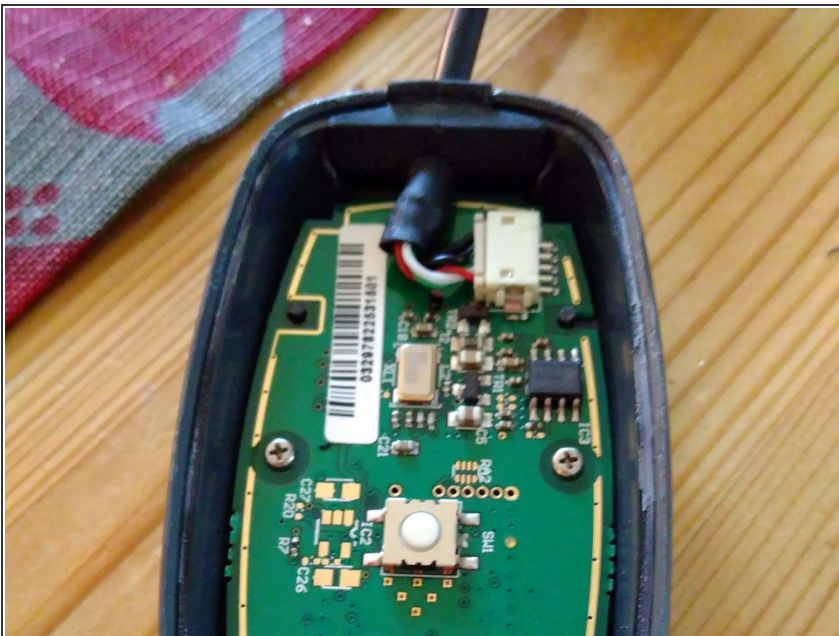
- [IR LED](#) (1)

Step 1 — The faulty receiver



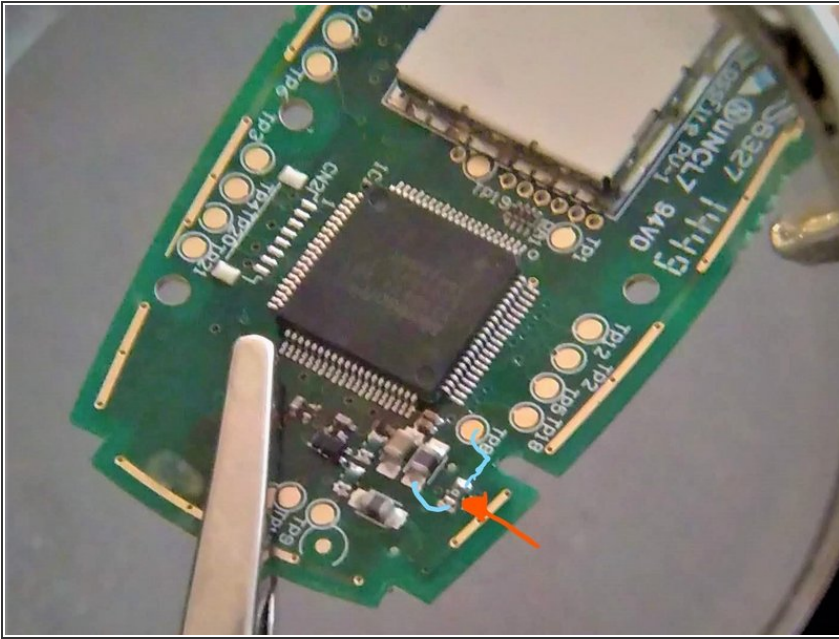
- The LED should be green when it is connected, here it is completely off.
- The device does not show up at all in the device manager and windows does not react in any way when connected.

Step 2 — Opening



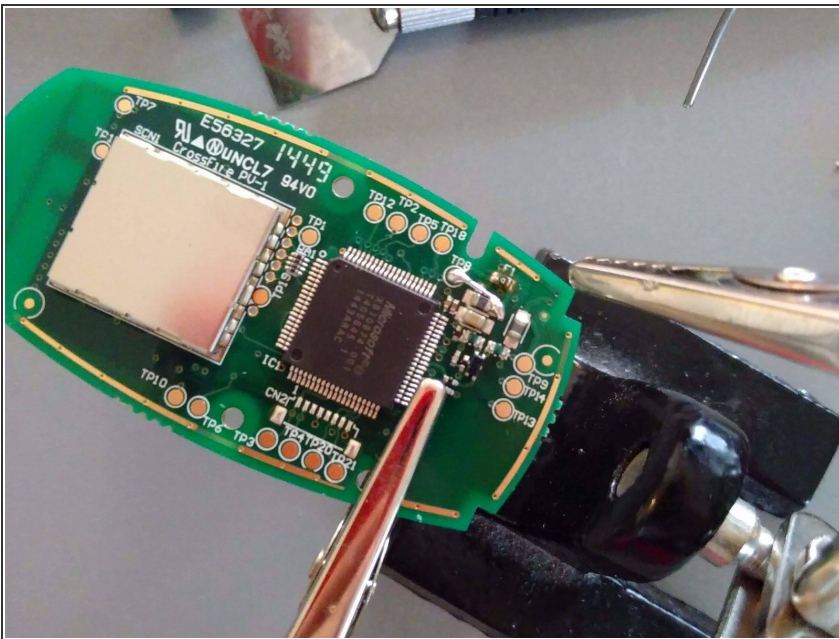
- This involves prying and will probably scratch the shell.
- Start at the cable side using a sharp prying tool or similar
- When the lid has been removed, there are two tiny philips screws that needs to be removed.

Step 3 — Locate the faulty fuse



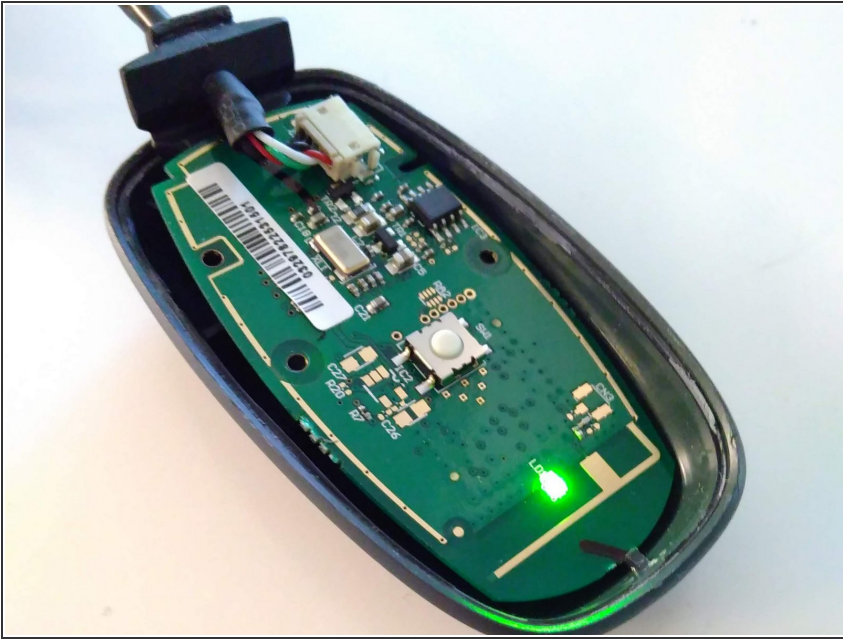
- At the side facing down, close to the cable connector there is a fuse (located by the red arrow)
- The blue lines shows the circuit that is usually closed if the fuse hasn't blown.
- Measure the resistance of the fuse, if it is higher than 1000 ohm (in my case 20 kOhms) consider it to be faulty

Step 4 — Short the fuse or replace it



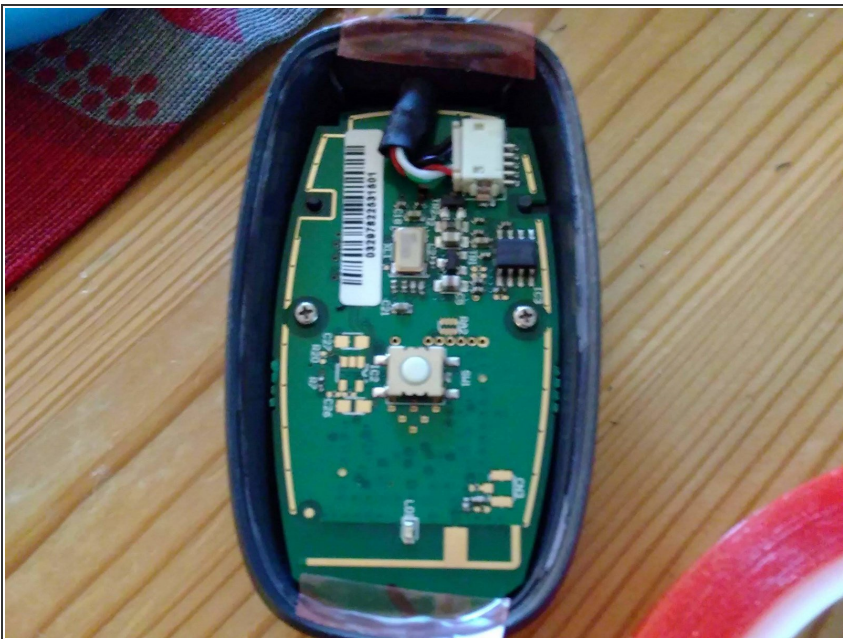
- I used a piece of LED - leg and bent it properly to create a perfect short-wire.
- Be careful when you solder, you do not want lead anywhere else!

Step 5 — Function test



- It's alive!

Step 6 — Reassembly



- I used double sided molding tape (red), in the upper and lower part of the chassi.
- Put the screws back and align the board properly.
- Using glue is an alternative, though troublesome if you would ever want to reopen it.