



# Microsoft Zune HD OLED Display Replacement

Written By: Walter Galan



# INTRODUCTION

Is your display cracked or faulty? No worries, you can replace it.



## TOOLS:

- [iFixit Opening Tools](#) (1)
  - [T5 Torx Screwdriver](#) (1)
  - [T6 Torx Screwdriver](#) (1)
  - [Tri-wing Screwdriver](#) (1)
-

## Step 1 — Upper Rear Panel



- Remove the four Tri-Wing screws securing the upper rear panel to the inner chassis.

## Step 2



- Slightly rotate the top edge of the upper rear panel away from the Zune.
- Lift the upper rear panel straight up off the black plastic lower rear panel.

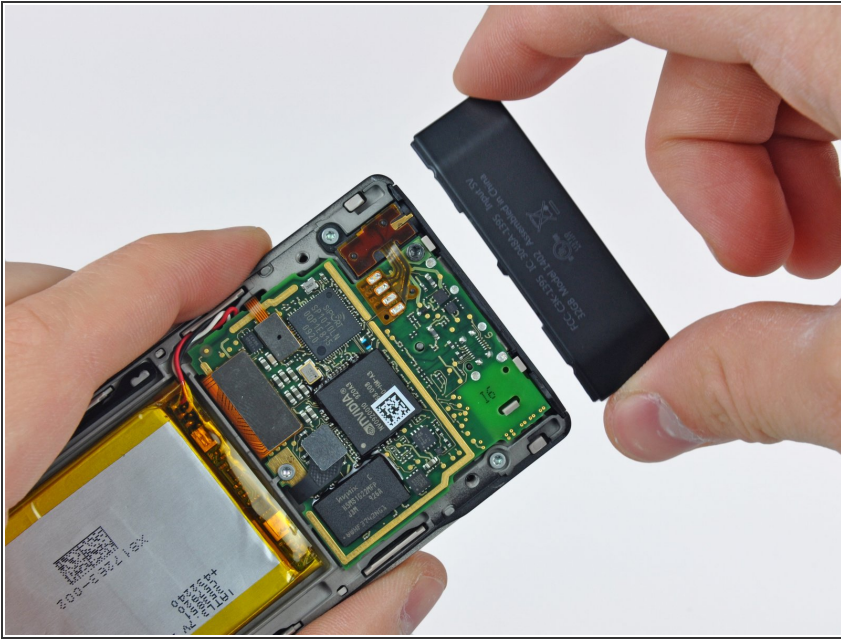
### Step 3 — Lower Rear Panel



- Insert a small Zune opening tool into the gap between the logic board and one side of the black plastic lower rear panel.
  - Carefully twist the Zune opening tool to pop the lower rear panel off the clips attaching it to the Zune.
- ⓘ Repeat this process for the other side of the lower rear panel.

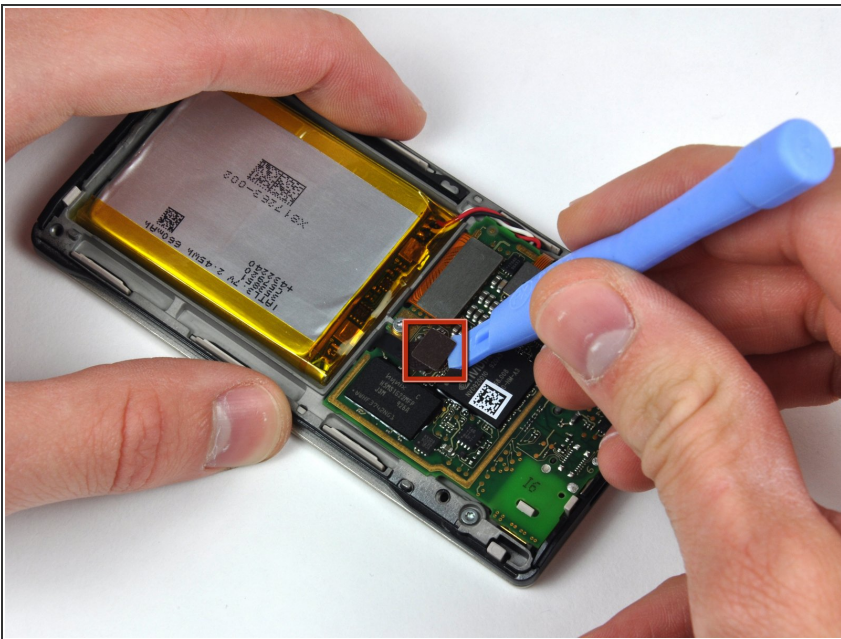


## Step 4



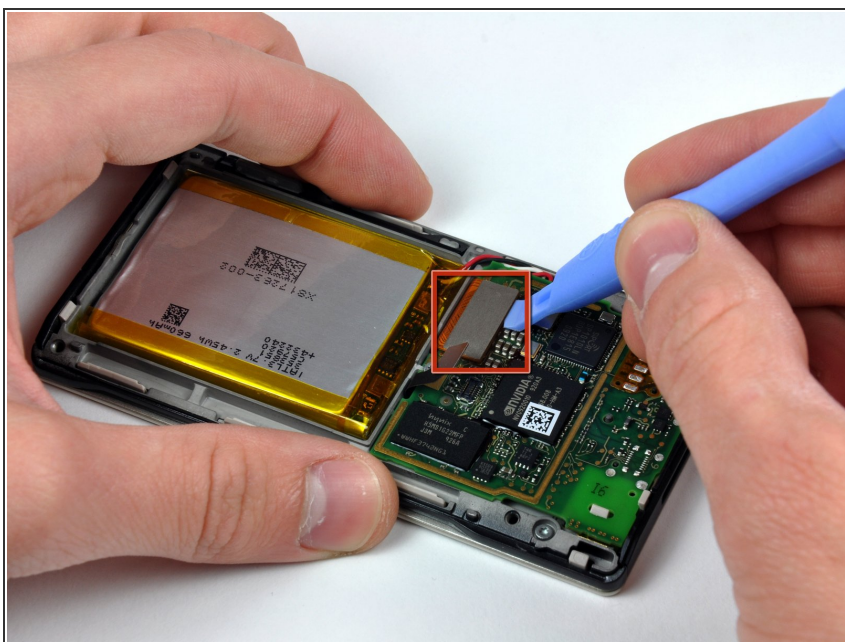
- Carefully slide the lower rear panel away from the Zune.

## Step 5 — Battery & Logic Board



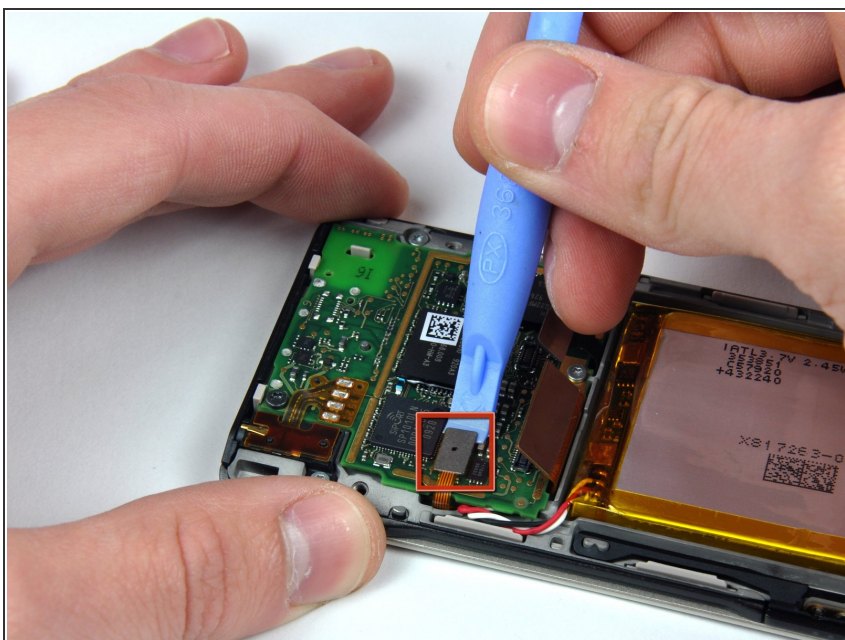
- Use a Zune opening tool to pry the digitizer ribbon cable connector up off the logic board.

## Step 6



- Use a Zune opening tool to pry the OLED display ribbon cable connector up off the logic board.

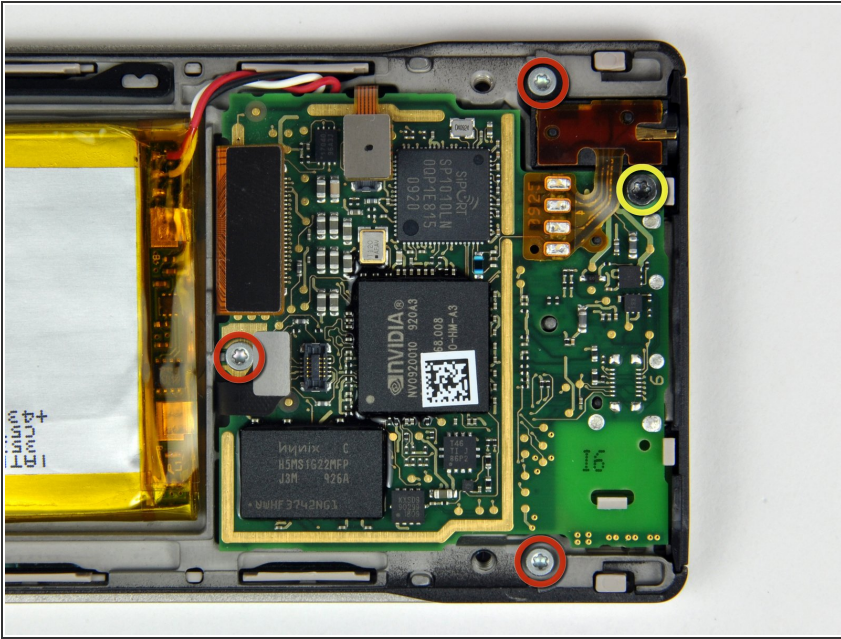
## Step 7



- Use a Zune opening tool to pry the control ribbon cable up off the logic board.



## Step 8



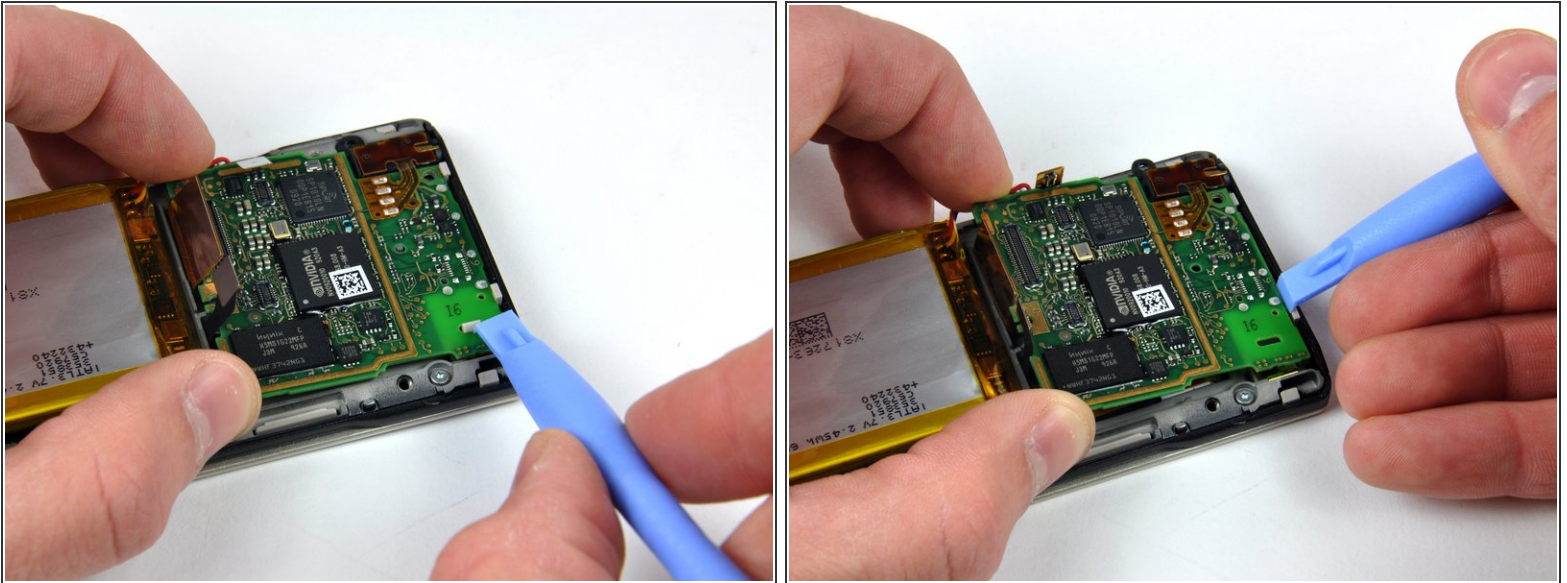
- Remove the following Torx screws securing the logic board assembly to the inner chassis:
  - Three T5 Torx screws.
  - One T6 Torx screw.

## Step 9



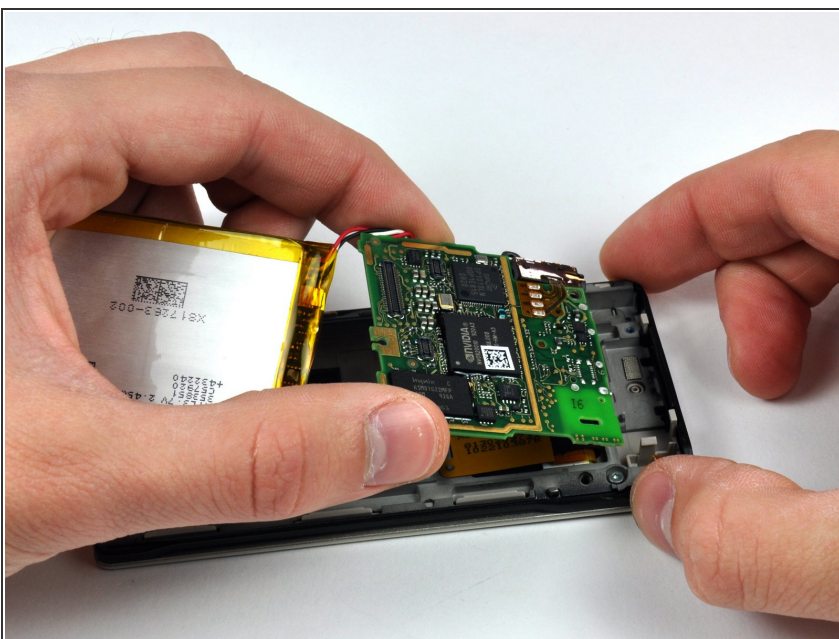
- Use a Zune opening tool to carefully pry the battery off the adhesive securing it to the inner chassis.
- ⚠ Do not attempt to completely remove the battery from the inner chassis as it is still attached to the logic board.

## Step 10



- Use a Zune opening tool to push the small plastic clip securing the logic board near its lower left edge toward the headphone jack while gently lifting the upper edge of the logic board.
- Use a Zune opening tool to pull the plastic clip away from the logic board while gently pulling the board away from the bottom edge of the Zune.

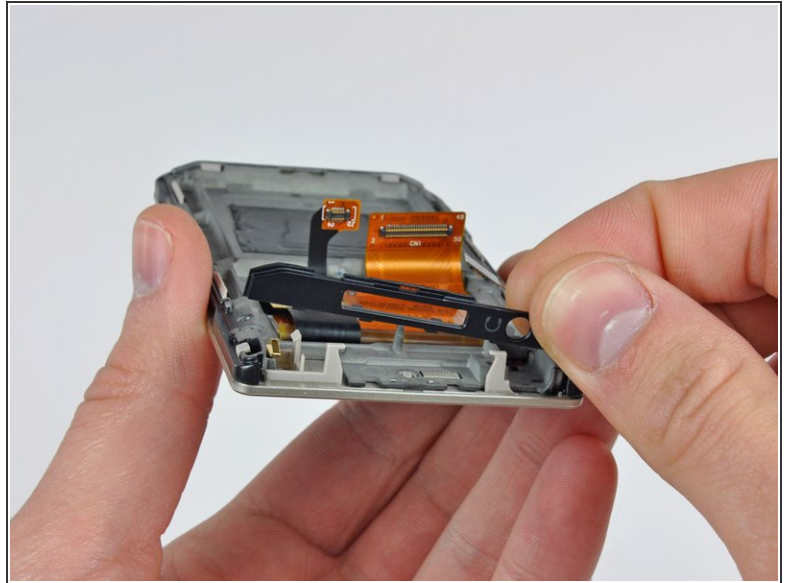
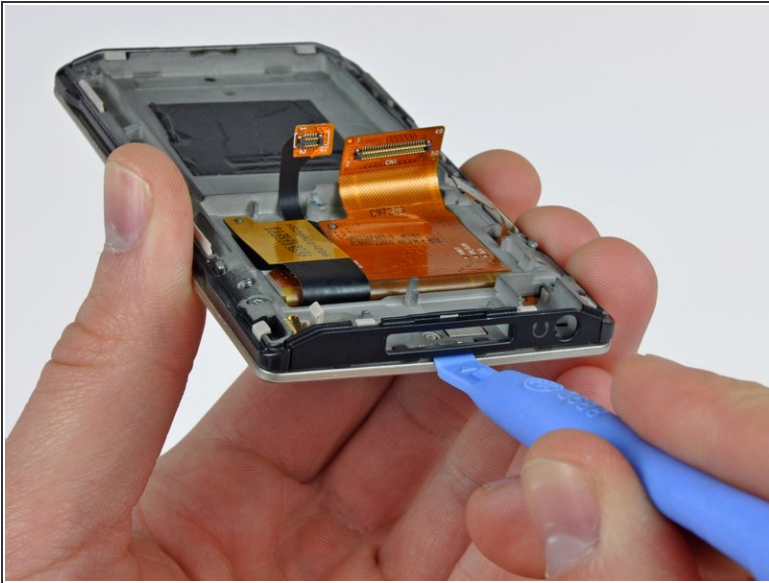
## Step 11



- ❗ For this step, it is recommended to cautiously hold the battery and logic board assembly with one hand while holding the inner chassis with the other.
- Pull the logic board away from the lower bezel and remove it from the inner chassis, minding any cables that may get caught.

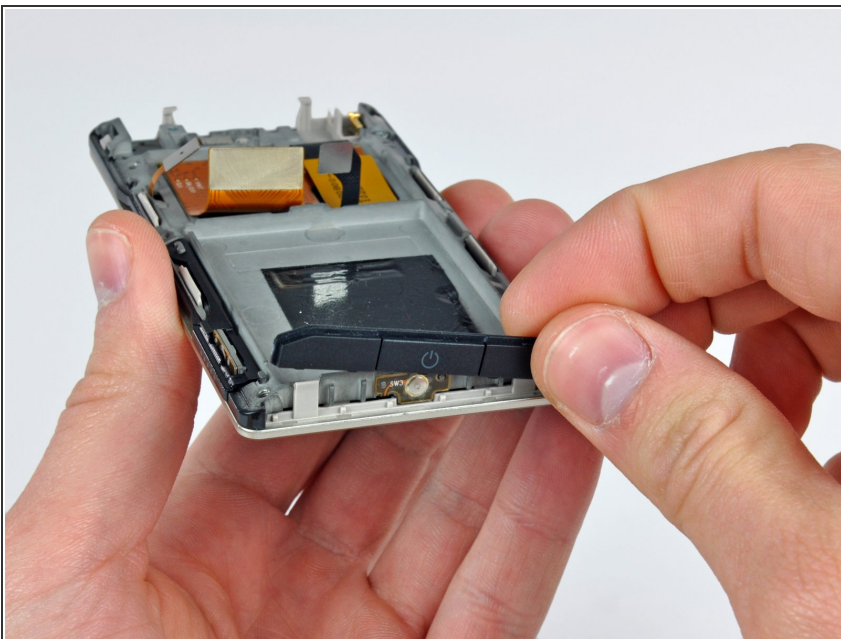


## Step 12 — Inner Chassis



- Insert the edge of a Zune opening tool between the black lower bezel and the front case.
- Pry the lower bezel up off the front case and set it aside.

## Step 13



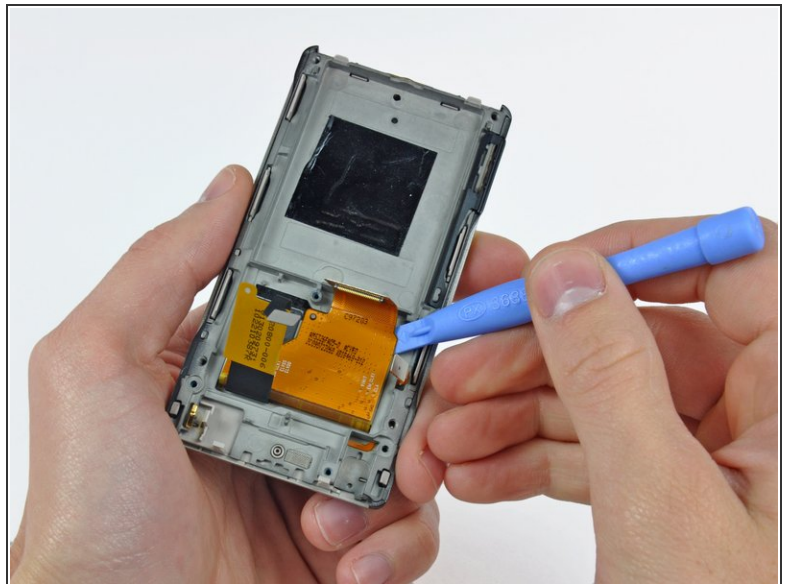
- Lift the upper bezel off the front case.

## Step 14



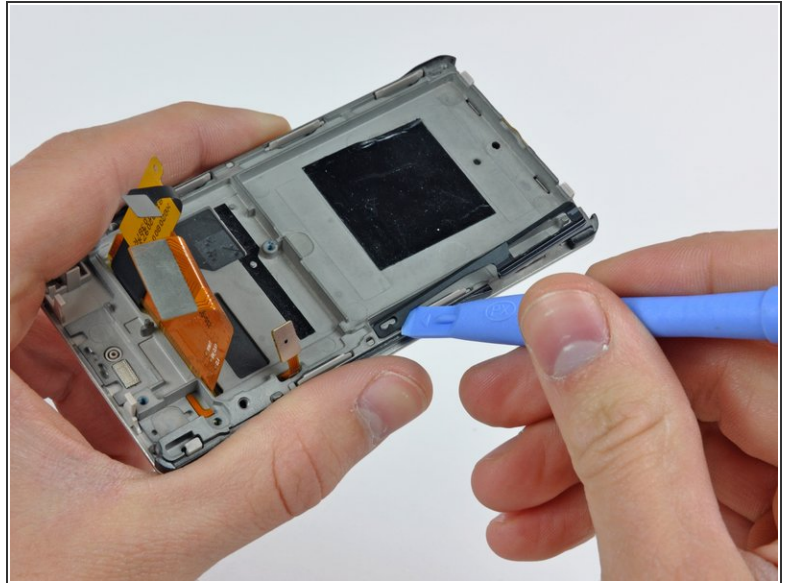
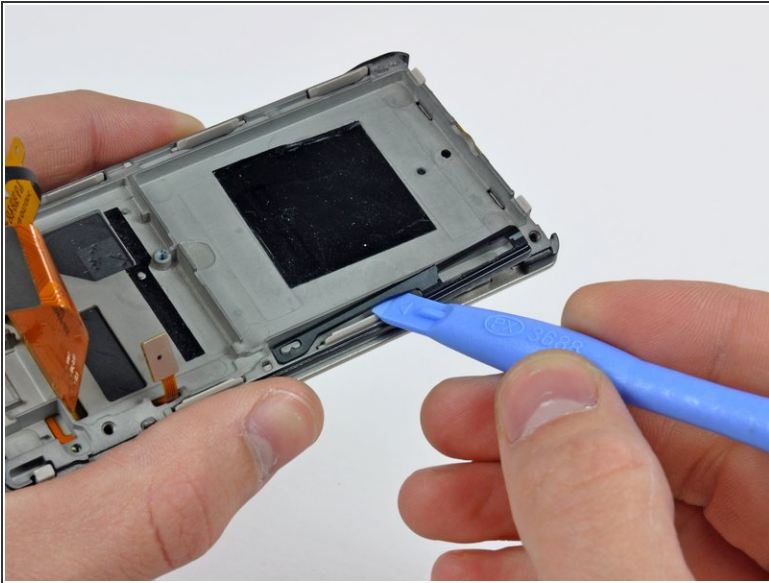
- Remove the single T5 Torx screw securing the front case to the inner chassis.

## Step 15



- Use a Zune opening tool to peel the digitizer and display ribbon cables off the foam tape securing them to the inner chassis.

## Step 16

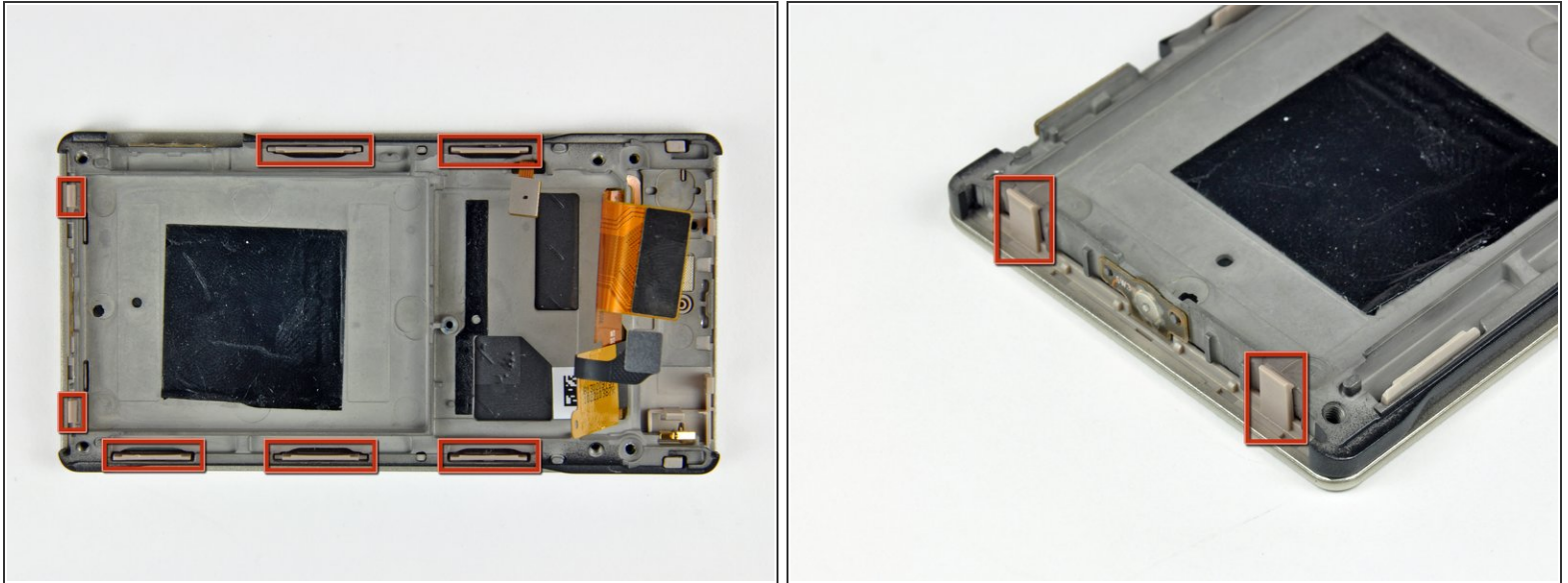





- Use a Zune opening tool to gently lift the media button lever off the post cast into the inner chassis.

⚠ Try not excessively rotate the media button lever about this post.

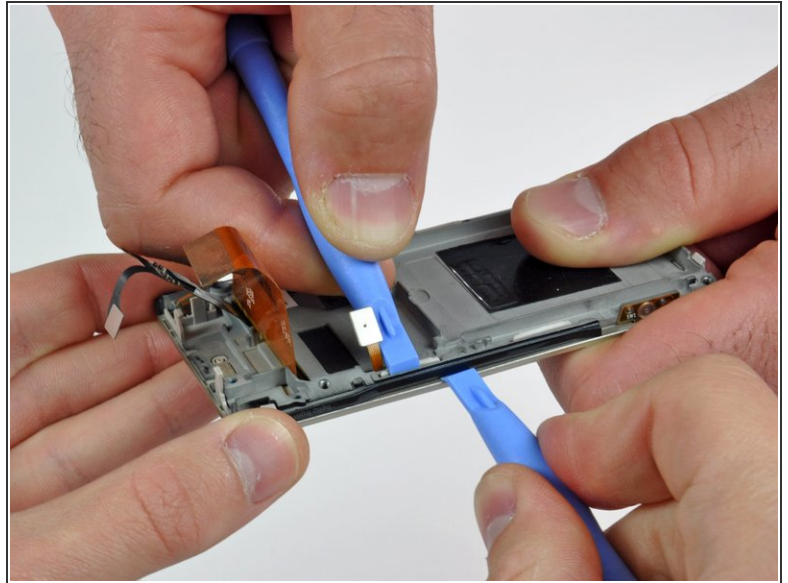
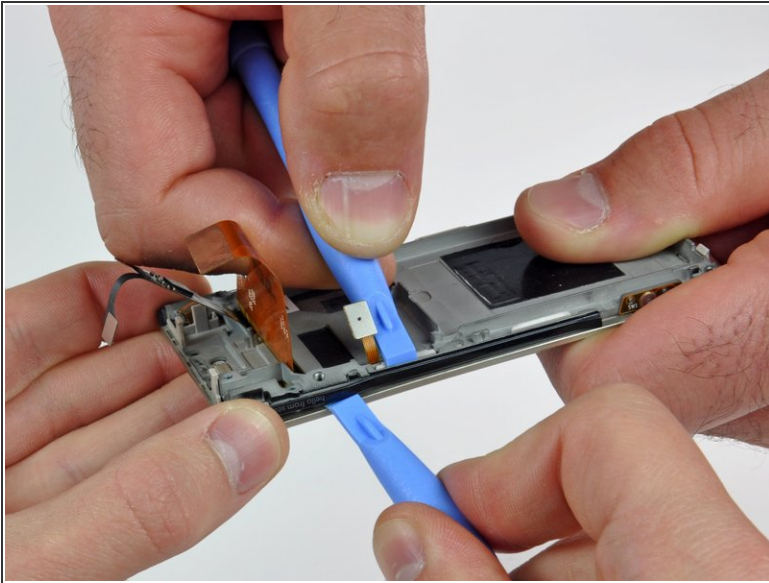



## Step 17



-  The inner chassis attaches to the front case by several clips around its perimeter (shown in red). The clips emanating from the front case are plastic and inherently delicate, so work carefully.
-  The five plastic clips along the side of the Zune lock onto small aluminum tabs cast into the inner chassis. To separate these clips, the plastic portion must be pushed toward the inside of the Zune while prying the inner chassis up off the front case.
-  The two plastic clips attached to the front case along the top edge of the Zune (second picture) simply clip onto the inner chassis. To separate the top edge, carefully push each clip away from the inside of the Zune while prying the inner chassis off the front case.

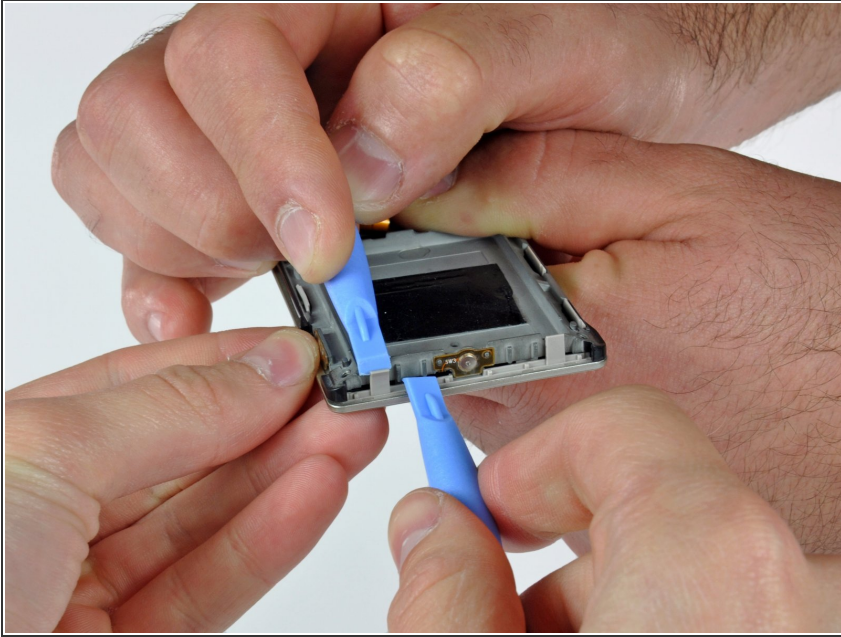
## Step 18



 This job can be completed alone, but we used a second set of hands for picture taking purposes.

- Use a Zune opening tool to gently pry the inner chassis off the front case while simultaneously using another Zune opening tool to push the plastic clip near the control cable connector toward the inside of the Zune.
- Work your way along the media button side of the Zune to separate both clips securing the front case to the inner chassis.

## Step 19



- Use a Zune opening tool to very carefully bend both plastic clips along the top edge of the Zune away from the inner chassis while simultaneously prying the respective side of the inner chassis up off the front case.
- Once the top edge of the inner chassis has been released from the front case, separate the clips along the right edge of the Zune.
- Lift the inner chassis off the front case, minding the digitizer and display ribbon cables routed through a slot near its center.



## Step 20 — OLED Display



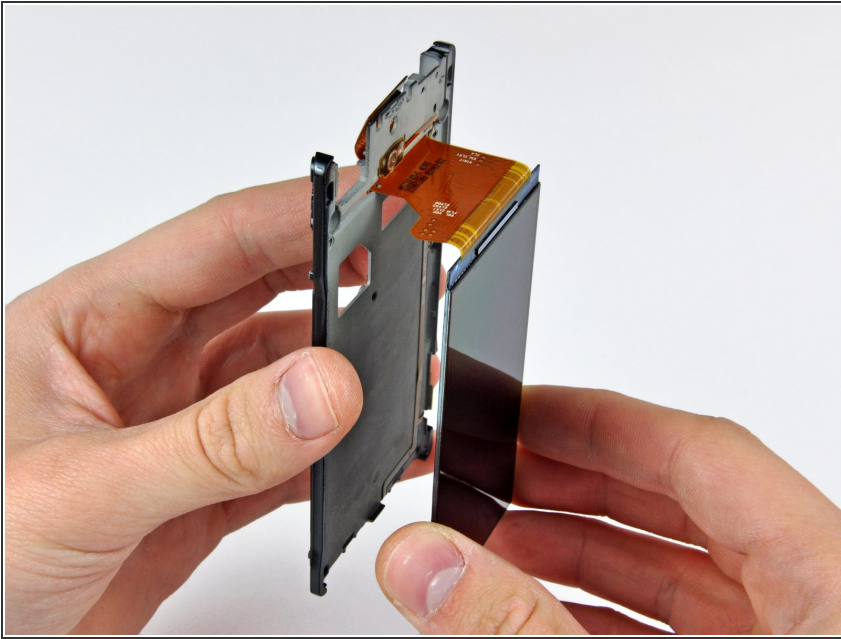
- Carefully insert the edge of a Zune opening tool between the OLED display panel and the inner chassis near its top edge.
- Carefully pry the top edge of the OLED display panel off the foam tape securing it to the inner chassis.

## Step 21



- Insert the edge of your Zune opening tool between the left side of the OLED display panel and the inner chassis.
- Carefully pry the OLED display off the foam tape securing it to the inner chassis.
- ❗ At this point, the OLED display should be lifted enough to completely separate it from the inner chassis.

## Step 22



- Carefully de-route the display data cable through the inner chassis and remove the OLED display.
- ★ Be sure both the face of the OLED display and the inner side of the digitizer are perfectly clean before reassembly, as any dust or fingerprints will be annoyingly visible when the Zune is turned on.

To reassemble your device, follow these instructions in reverse order.