



# Microtek ScanMaker 5900 New Ribbon Cable Replacement

This guide will show you how to replace a broken or damaged ribbon cable.

Written By: Taylor Nesheim



# INTRODUCTION

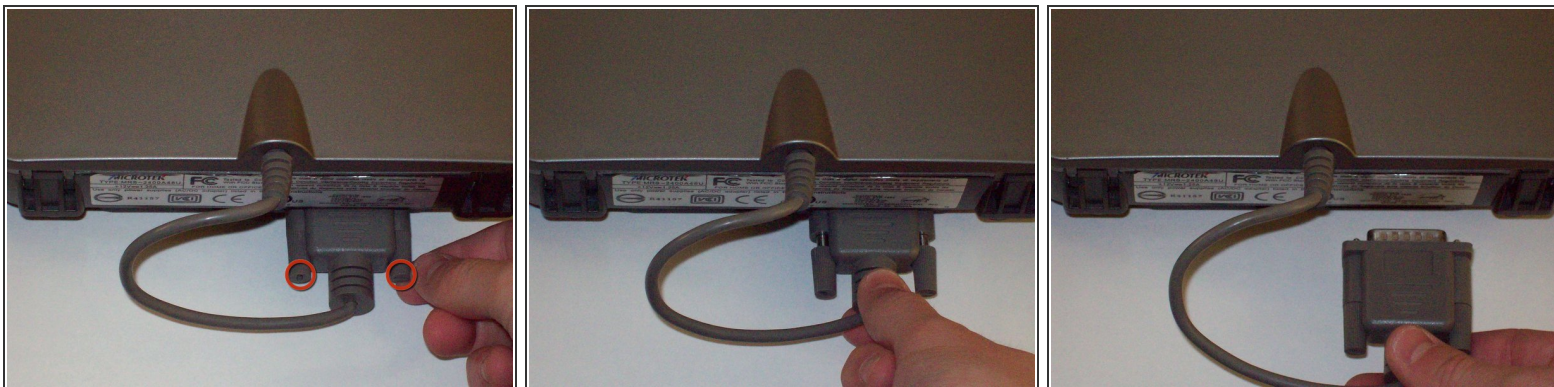
This guide will show the owner of this scanner how to remove and replace a broken or damaged ribbon cable.



## TOOLS:

- [Tweezers](#) (1)
  - [iFixit Opening Tools](#) (1)
-

## Step 1 — Remove serial port connection



- Loosen the screws on the serial port by turning them counter clockwise by hand.
- After loosening the screws, pull the serial port out.

## Step 2 — Remove Lid



- Lift lid to its vertical position.
- Pull lid straight up to remove it from the scanner.

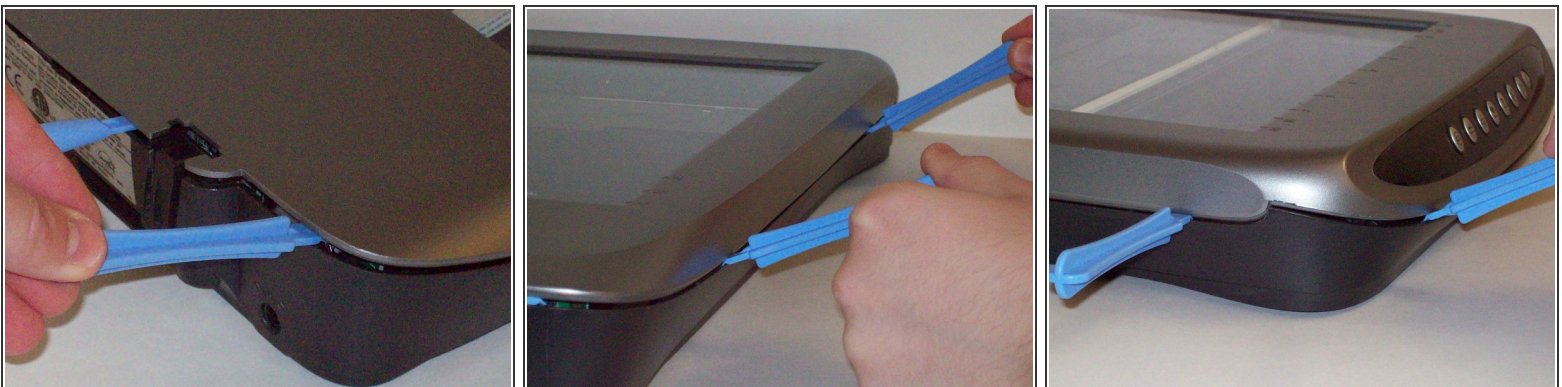


### Step 3 — Detach plastic latches



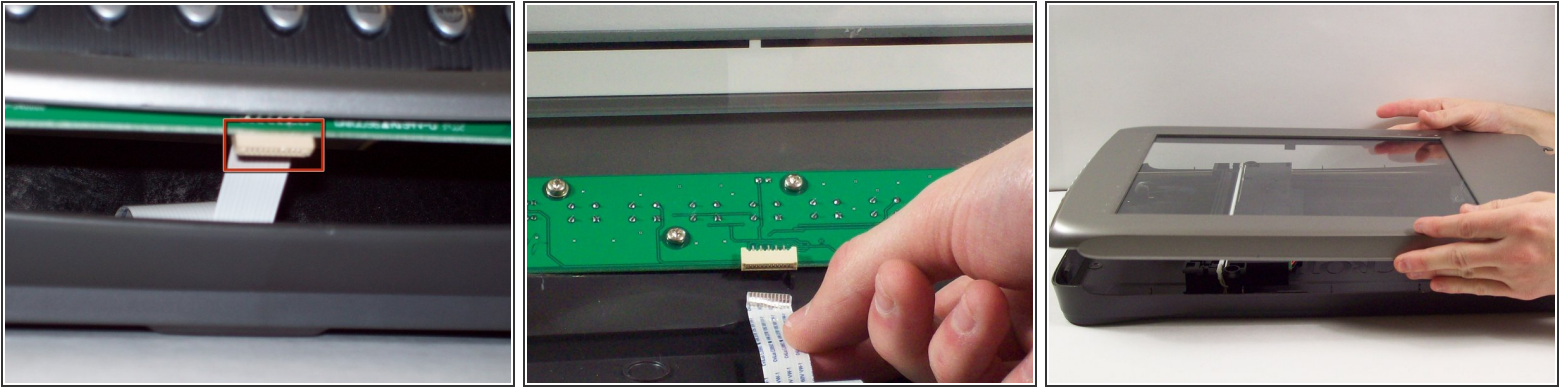
- Push the plastic opening tools into the crack between the top and the bottom of the chassis.


### Step 4 — Continue latch detachment



- After placing one plastic opening tool into the slit, slide other plastic opening tools along the slit to detach the top from the bottom of the chassis.
- Go all the way along the chassis until you can lift the upper lid.

## Step 5 — Fully remove the upper lid



 Do not fully remove the lid until you remove the ribbon cable attached to the front of the upper lid.

- Do this by grabbing the upper lid from the sides and rotating it ninety degrees so it is perpendicular to the bottom lid.
- Grab the ribbon cable and gently pull it out of its slot with your fingers.
- The upper lid can now safely be removed from the bottom lid.

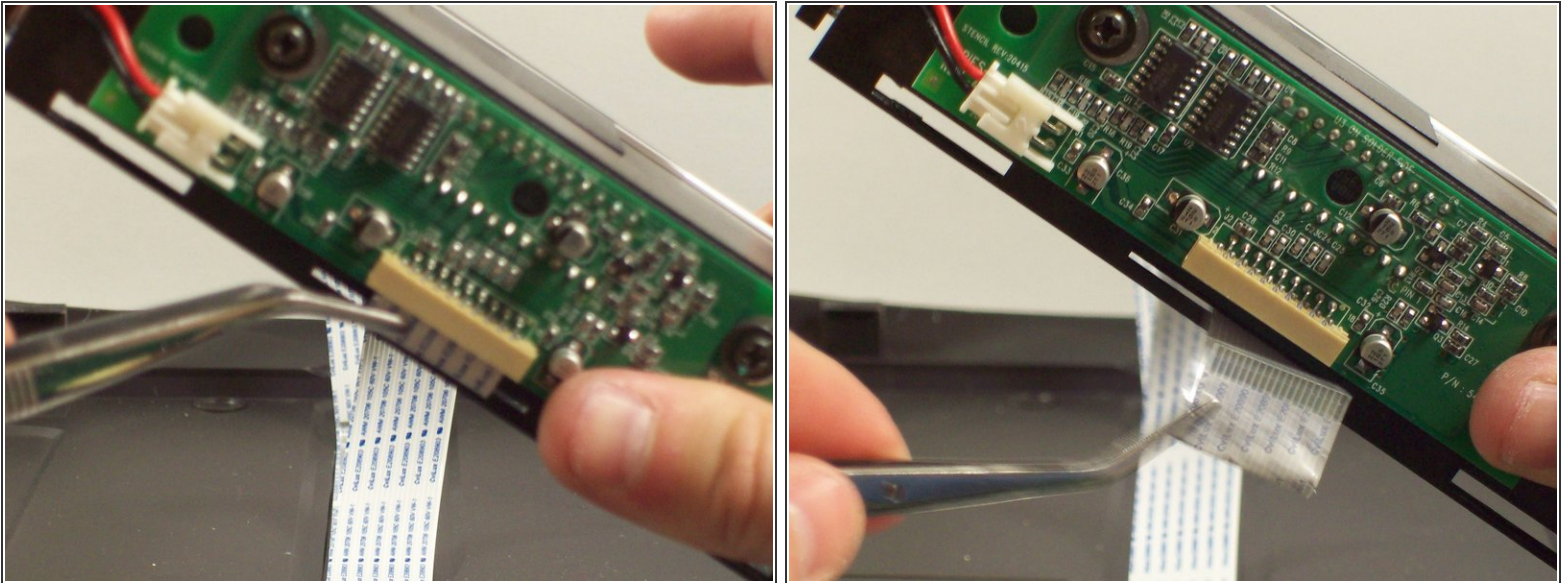
## Step 6 — Remove outer plastic housing



- Lift up the central plastic housing inside the scanner.
- There are four plastic tabs located on the outer plastic housing. Push on each of these and pull to remove it.
- Underneath you will see that the ribbon cable is attached to the circuit board.

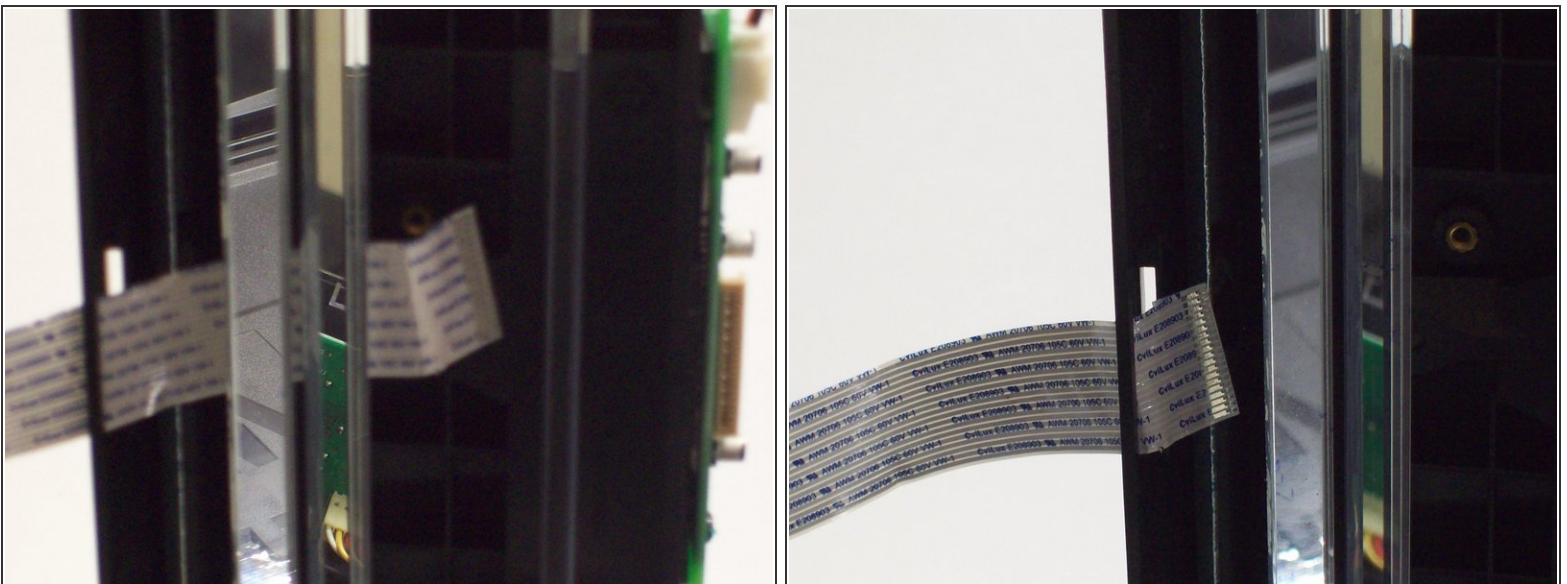


## Step 7 — Remove ribbon cable from circuit board



- Grab onto ribbon cable with tweezers and gently pull until it come outs.

## Step 8 — Remove ribbon cable from central plastic housing



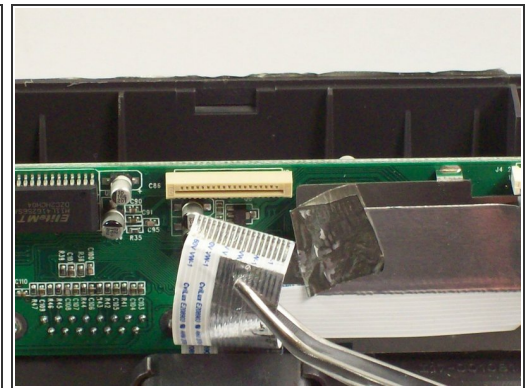
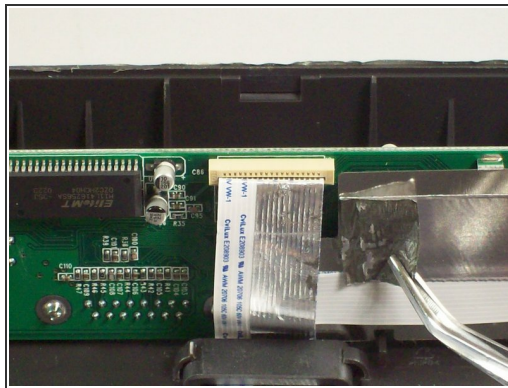
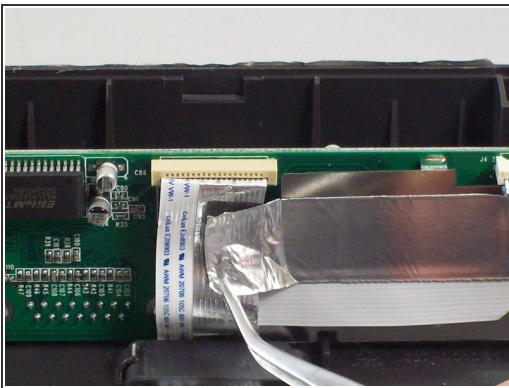
- Simply remove the ribbon cable from within the holes it is wrapped through.

## Step 9 — Remove the ribbon cable from between the plastic prongs on the bottom of the scanner.



- Grab the ribbon cable, and gently pull it off of the bottom of the scanner.

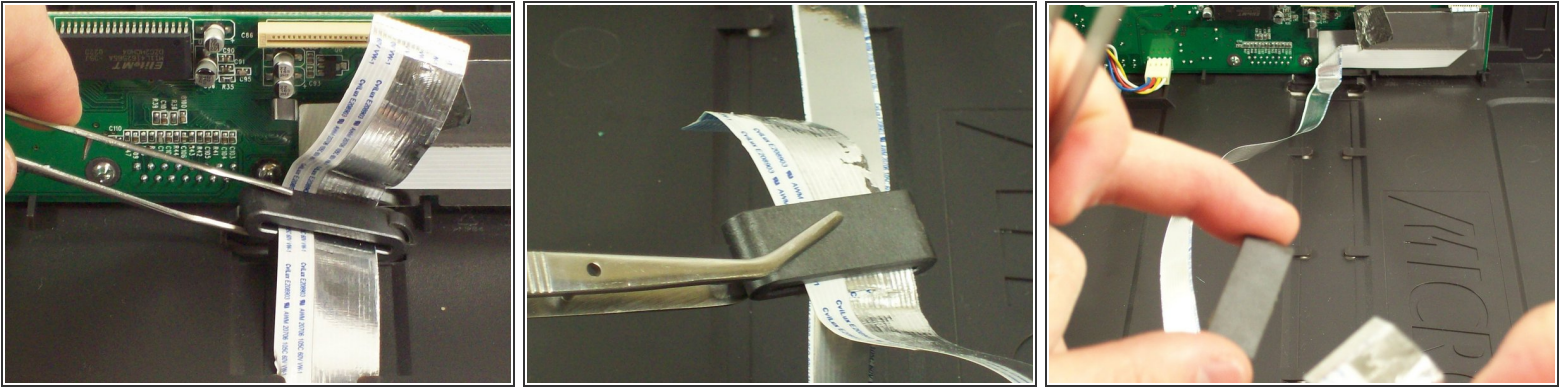
## Step 10 — Remove ribbon cable from circuit board



- Peel back the sticky metal from the other side of the ribbon cable.
- Use tweezers to gently remove the ribbon cable from the circuit board.



## Step 11 — Remove ribbon cable



- Remove the metal housing for the ribbon cable at the base of the scanner.
- Use the tweezers to slide off the metal housing.
- The ribbon cable is now completely free to be replaced.

To reassemble your device, follow these instructions in reverse order.