



Mid F900 Back Cover Replacement

Replace the back cover of your device.

Written By: Matthew Oliva



INTRODUCTION

This is a guide to replace the back cover of the device. Make sure to follow all the steps correctly and handle with care.



TOOLS:

- [iFixit Opening Tools](#) (1)
 - [JIS Driver Set](#) (1)
-

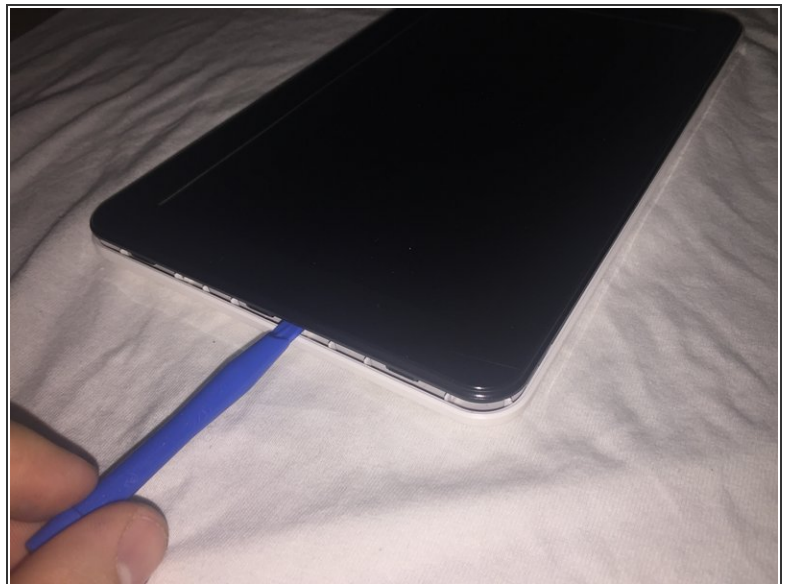
Step 1 — Back Cover



- Using a J00 Phillips-head screwdriver, remove the two screws located at the bottom of the device.

ⓘ Screws are 5mm x 1mm in size.

Step 2



- Use the plastic opening tool to pry off the white back-plate of the device.

To reassemble your device, follow these instructions in reverse order.