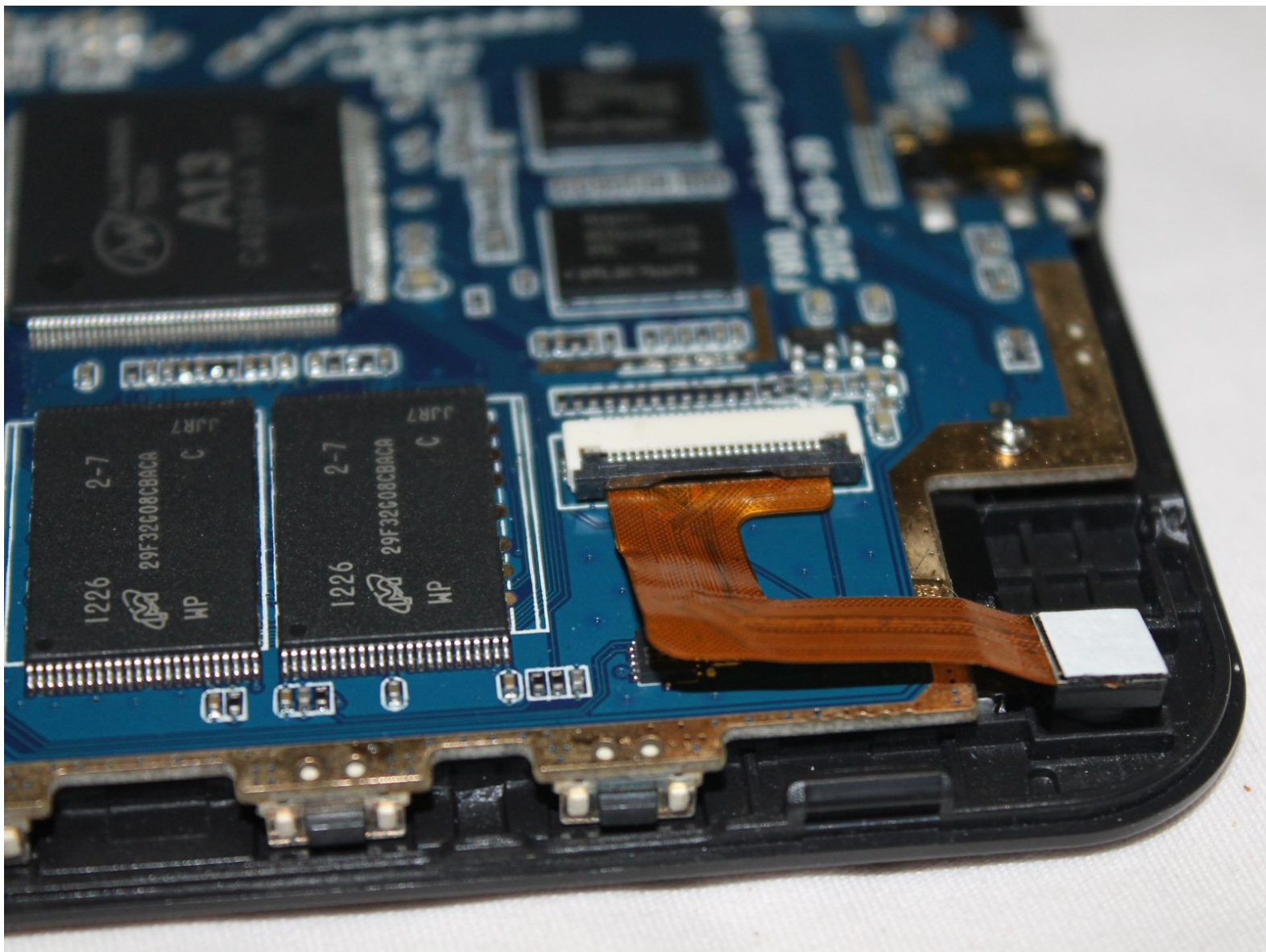




Mid F900 Camera Replacement

Replace a dying or dead camera within your device

Written By: Jacques Pierre



INTRODUCTION

For this guide, you will be replacing the device's camera. You will need to be mindful and careful of the device's other exposed components when following this guide.

TOOLS:

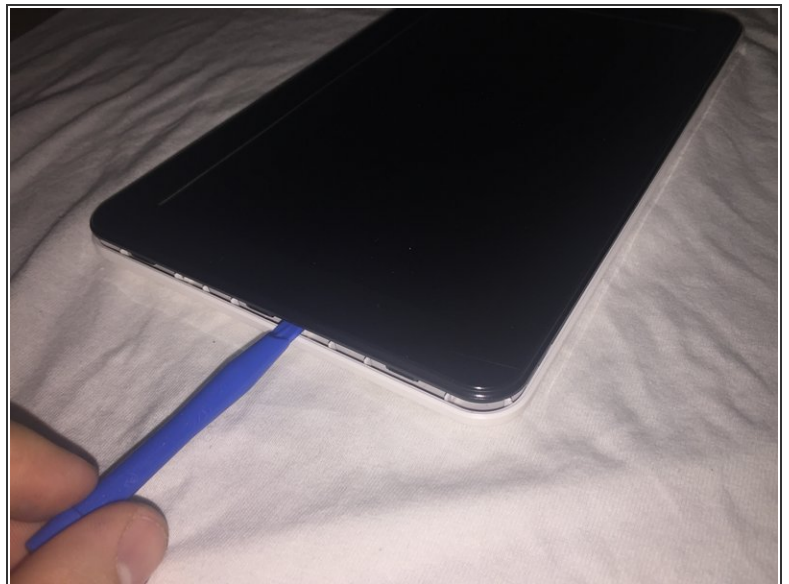
- [JIS Driver Set](#) (1)
 - [iFixit Opening Tools](#) (1)
-

Step 1 — Back Cover



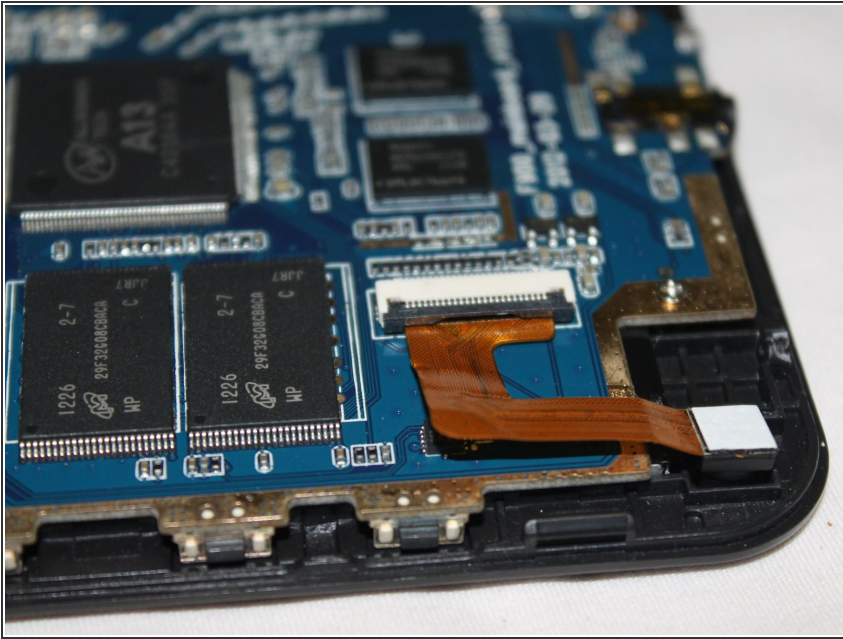
- Using a J00 Phillips-head screwdriver, remove the two screws located at the bottom of the device.
- ⓘ Screws are 5mm x 1mm in size.

Step 2



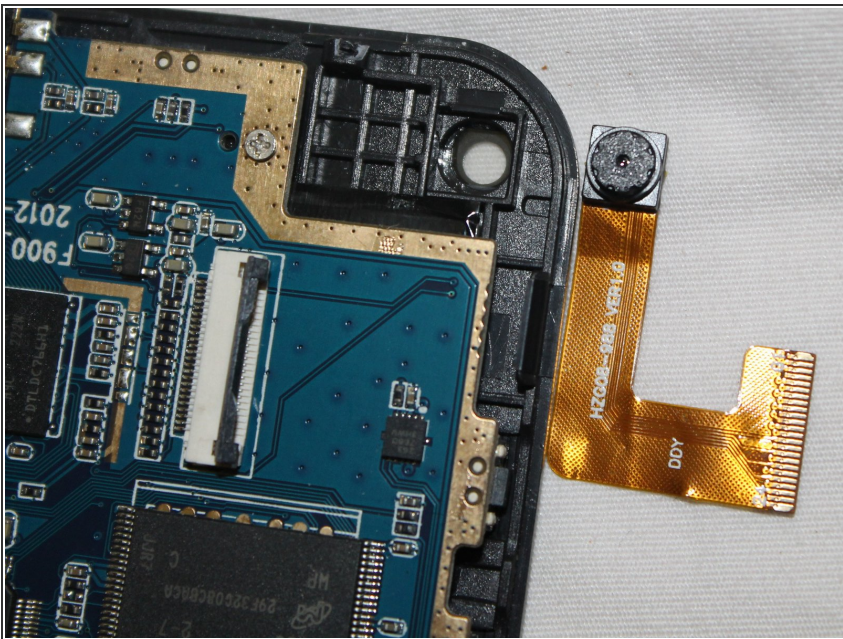
- Use the plastic opening tool to pry off the white back-plate of the device.

Step 3 — Camera



- Near the top left of the device, gently unclip the gold ribbon cable by pulling up the black clip holding it in place and removing the ribbon.

Step 4



- Remove the old camera by carefully lifting it straight up.
- Place the new camera in its place.

To reassemble your device, follow these instructions in reverse order.