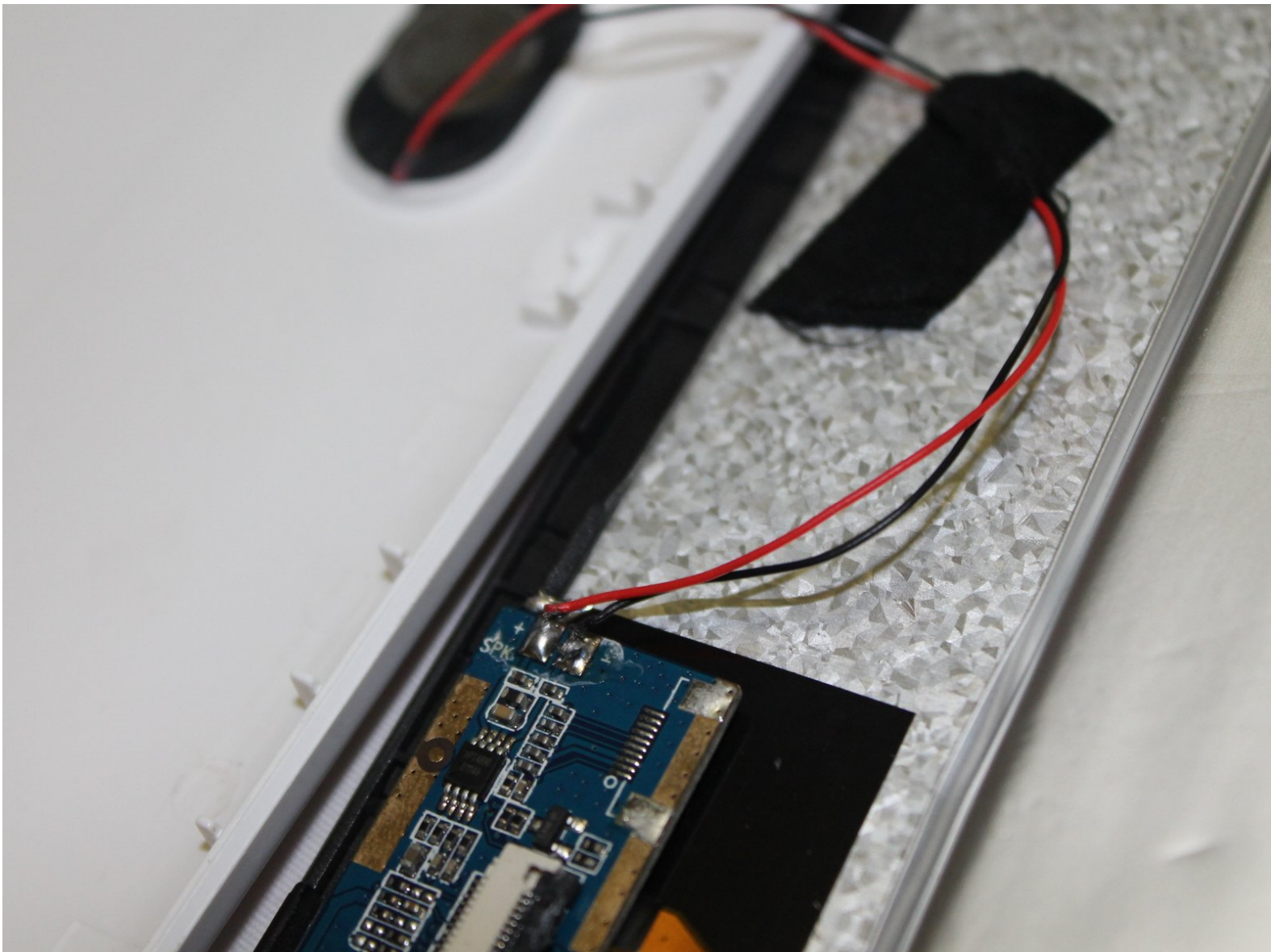




Mid F900 Speaker Replacement

Replace a dying or dead speaker within your device

Written By: Jacques Pierre



INTRODUCTION

This is a guide to replace the speaker in the device. Make sure to follow all the steps correctly and handle with care.



TOOLS:

- [JIS Driver Set](#) (1)
 - [iFixit Opening Tools](#) (1)
 - [Soldering Iron](#) (1)
 - [Spudger](#) (1)
-

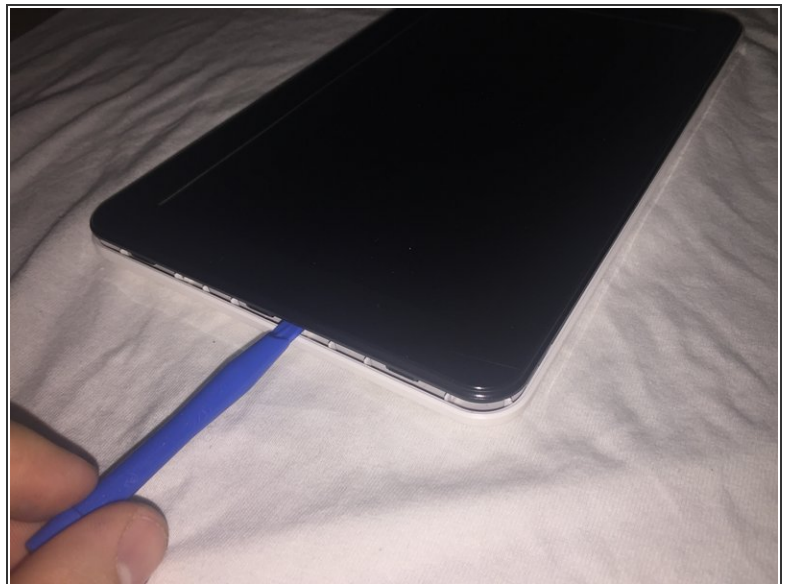
Step 1 — Back Cover



- Using a J00 Phillips-head screwdriver, remove the two screws located at the bottom of the device.

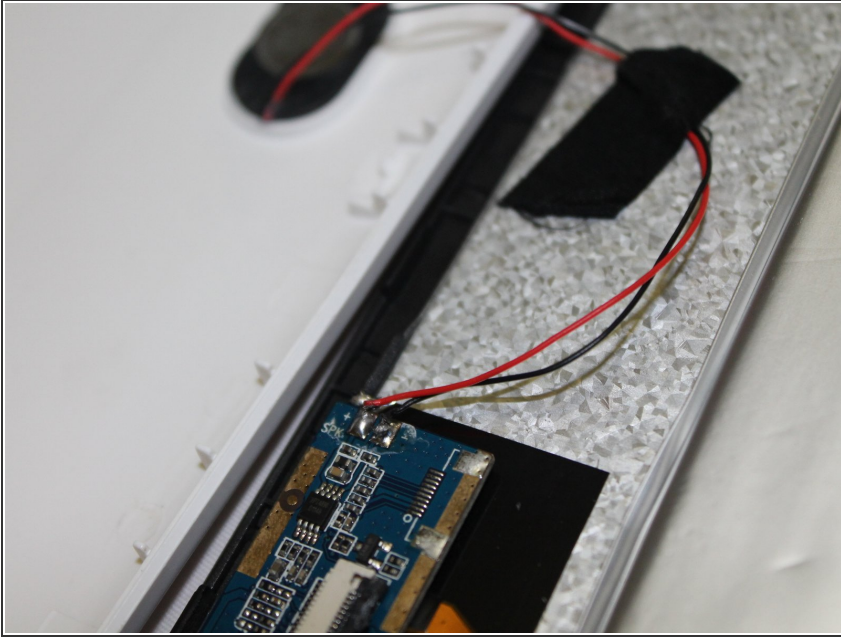
ⓘ Screws are 5mm x 1mm in size.

Step 2



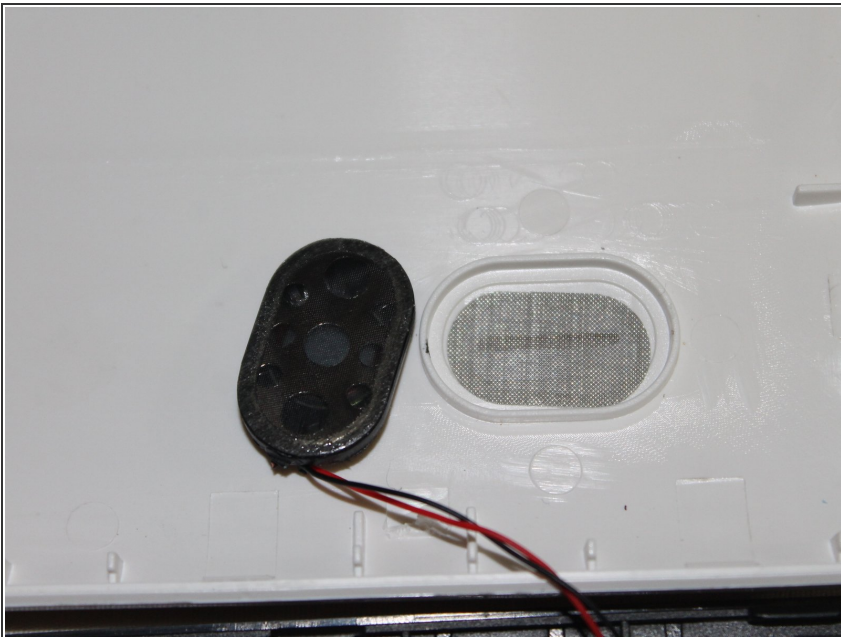
- Use the plastic opening tool to pry off the white back-plate of the device.

Step 3 — Speaker



- Follow the black and red wires coming from the white back plate to the motherboard.
- ⓘ For soldering help, use the [How to Solder and Desolder Connections](#) guide.
- Carefully use the soldering iron to desolder the wires from the motherboard.
- ⚠ Do not keep the soldering gun on the motherboard for too long or damage may occur to the device.

Step 4



- Use the nylon spudger to gently pry the speaker from the case. Then put the new speaker in.
- ⓘ You will need to resolder the wires from the new speaker to the motherboard.

To reassemble your device, follow these instructions in reverse order.