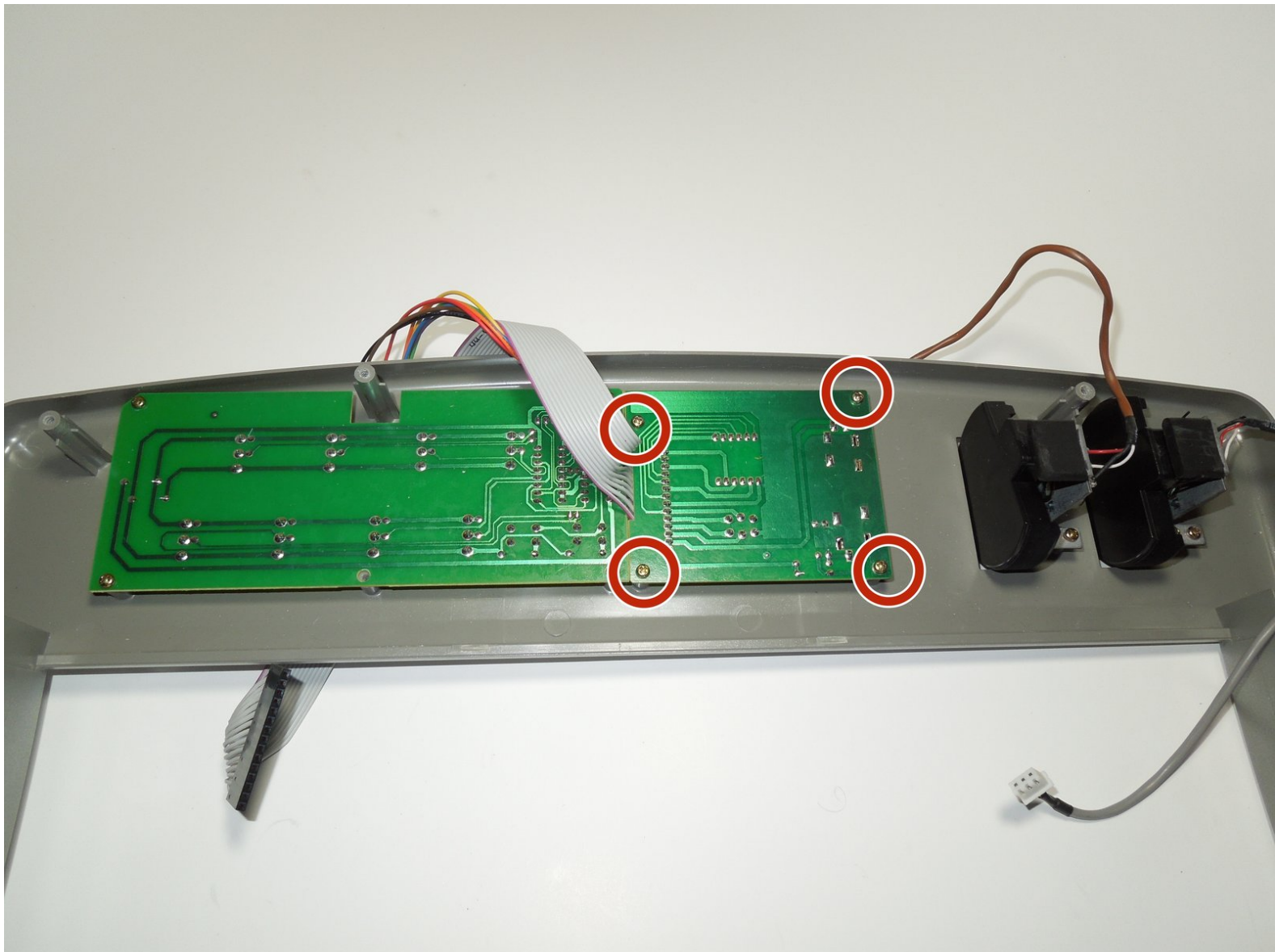




Midiman Oxygen 8 Data Entry Slide Bar Replacement

This guide shows how to replace the Slide Bar that is located next to the LCD screen.

Written By: Scott Miller

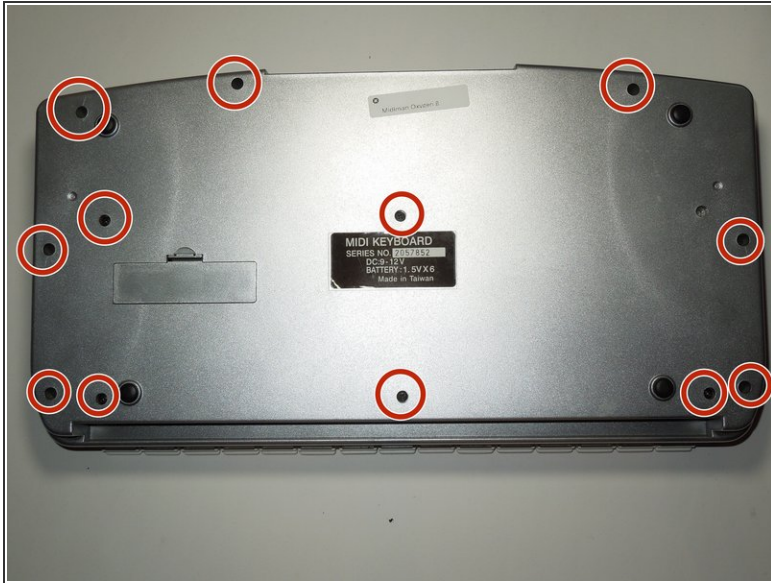




TOOLS:

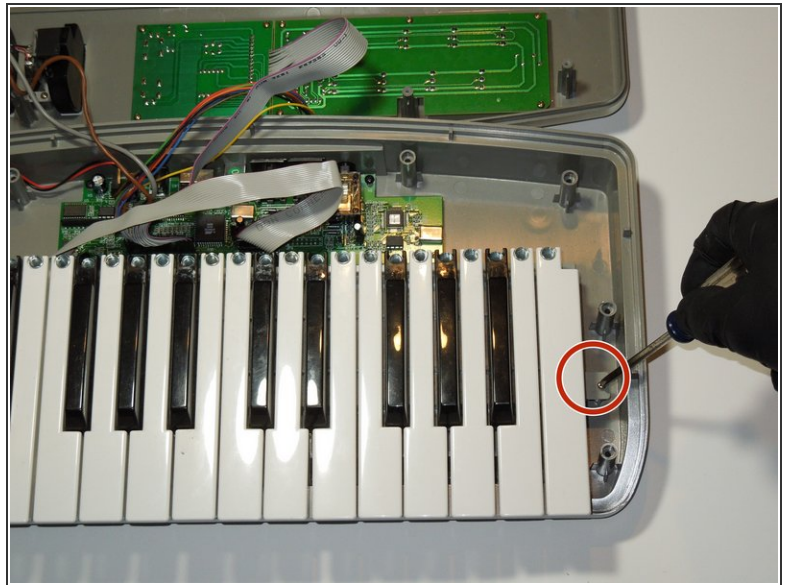
- [JIS Driver Set](#) (1)
 - [Soldering Iron](#) (1)
-

Step 1 — Midiman Oxygen 8 Backplate Disassembly



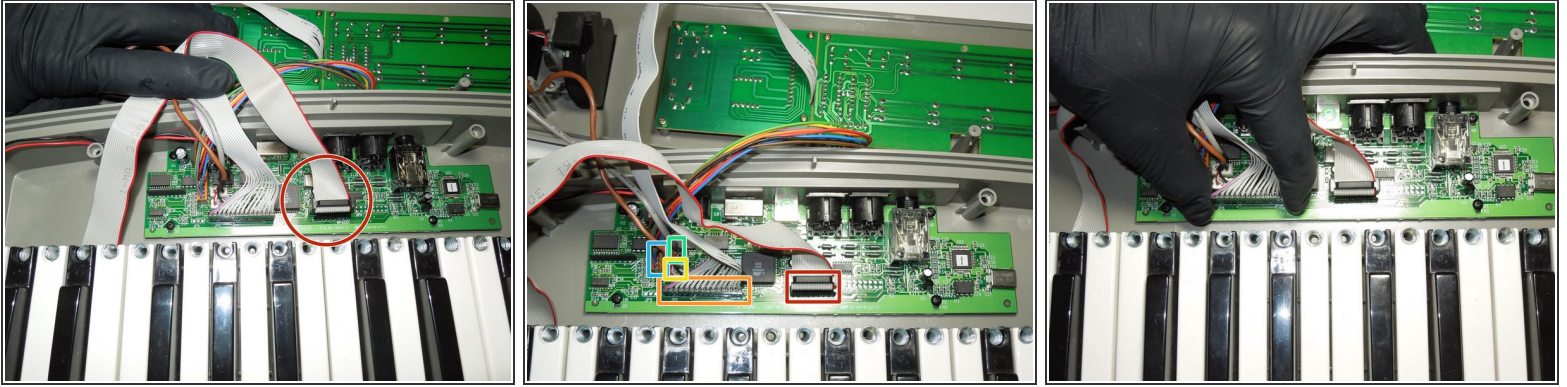
- Remove the 8 mm M3 Phillips head self tapping machine screws.
 - ⚠ Several of the screws are in narrow, deep sockets; make sure to use an appropriate screw driver to remove them so as not to damage the cover during removal.
- Remove all 13 of the back plate screws.

Step 2



- Remove the two highlighted 10 mm M3 galvanized machine screws using the J1 head from the iFixit Tool Kit or a comparable tool.

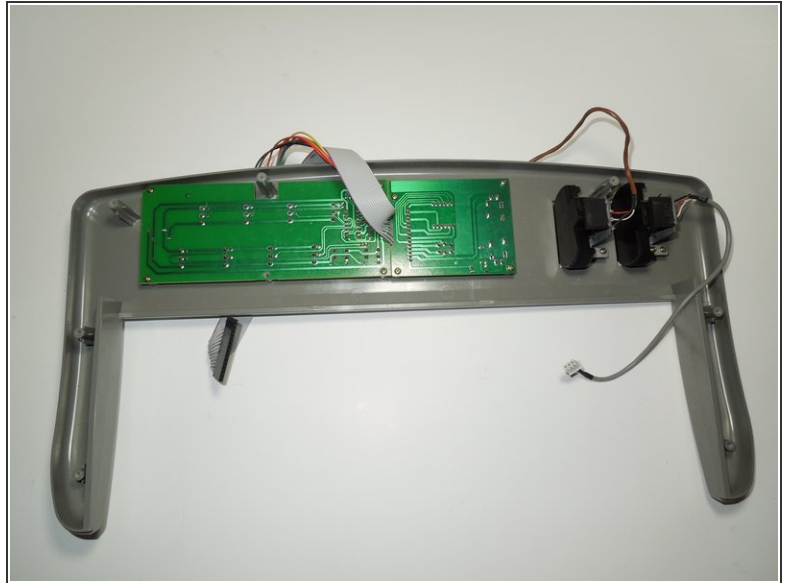
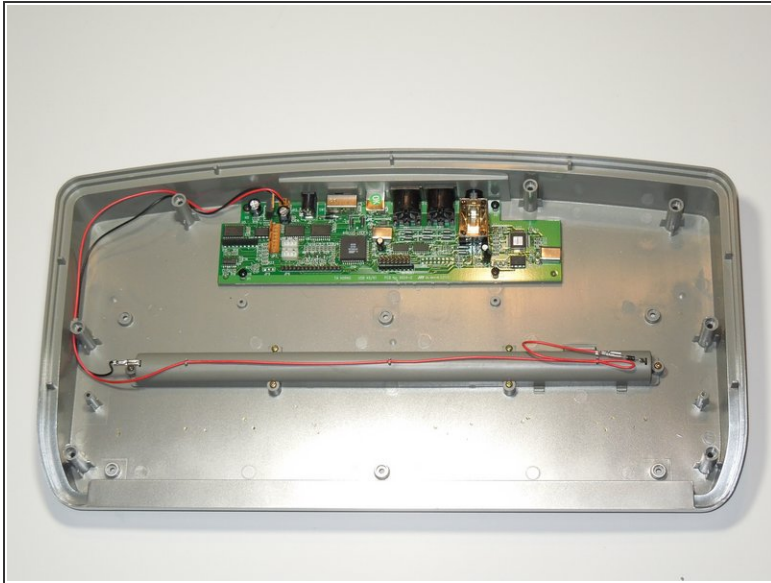
Step 3



● Removal of Ribbon Cables

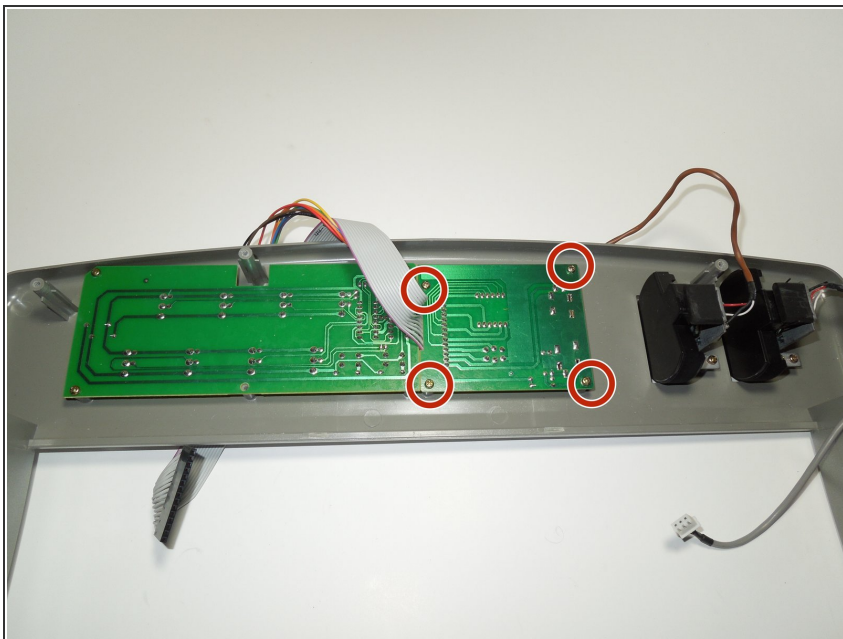
- ❗ Prior to removal, note, mark, or take photo's of the position of all connectors. Specifically note the side that the red wire is on, as ribbon cables are polarized cables that must be re-installed correctly. Installing the cables backwards may cause damage to the device or significantly hinder the troubleshooting process.
- To separate the back plate, remove all five cables that connect to the motherboard but do not originate from the back plate; the key assembly, LCD circuit, rotor tuning circuit, and the pitch and modulator circuits. None of these cables require tools to remove, simply apply firm upward pressure to remove them.

Step 4



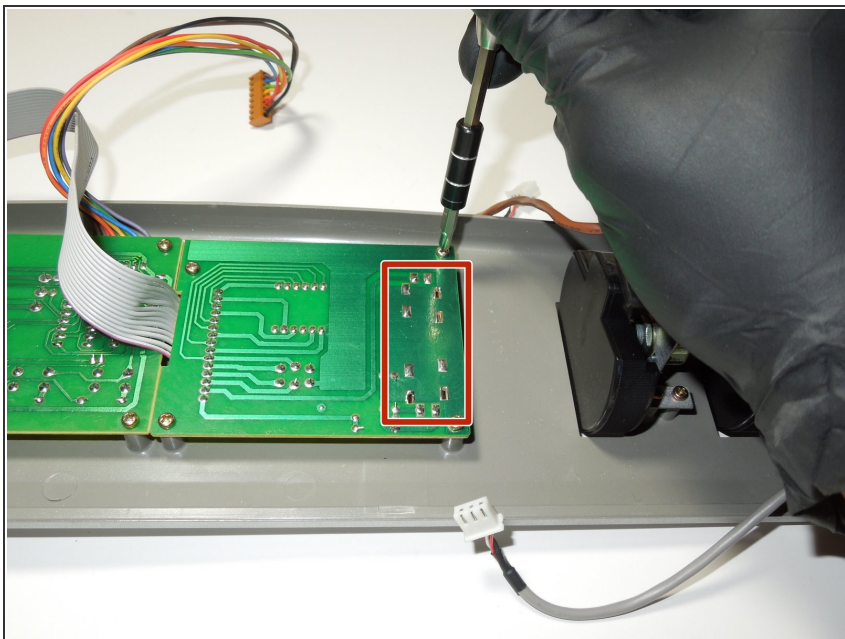
- Remove the key assembly from the key board.
- What remains is the back plate and the top plate assemblies.

Step 5 — Data Entry Slide Bar



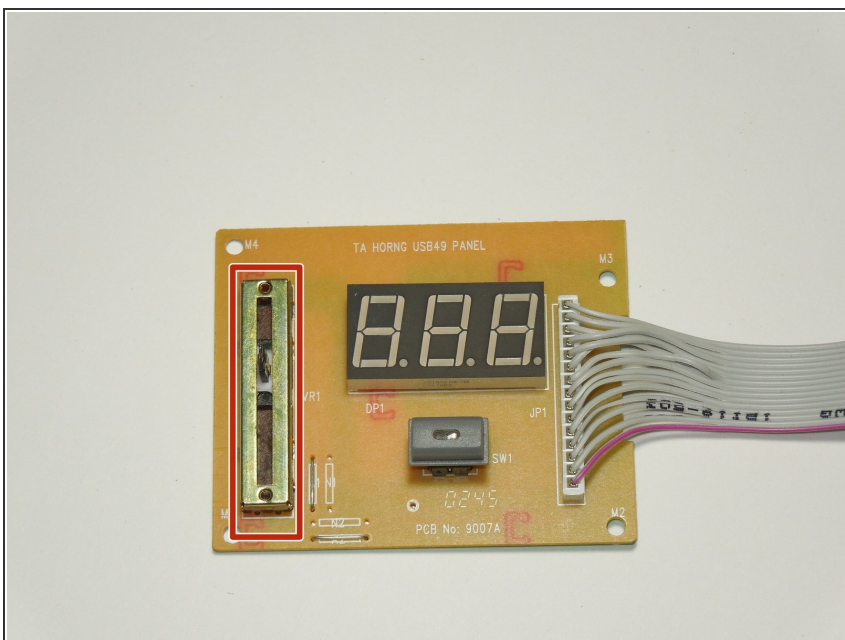
- The Data Slide bar is attached to the same circuit as the LCD screen on the reverse of the front faceplate.
- Remove the four M1.5 x 3 screws

Step 6



- These are the 12 contacts that must be de-soldered in order to remove the data entry slide bar, 4 are electrical and 8 secure the housing.

Step 7



- After de-soldering the part, you will be able to remove it and replace it.

To reassemble your device, follow these instructions in reverse order.