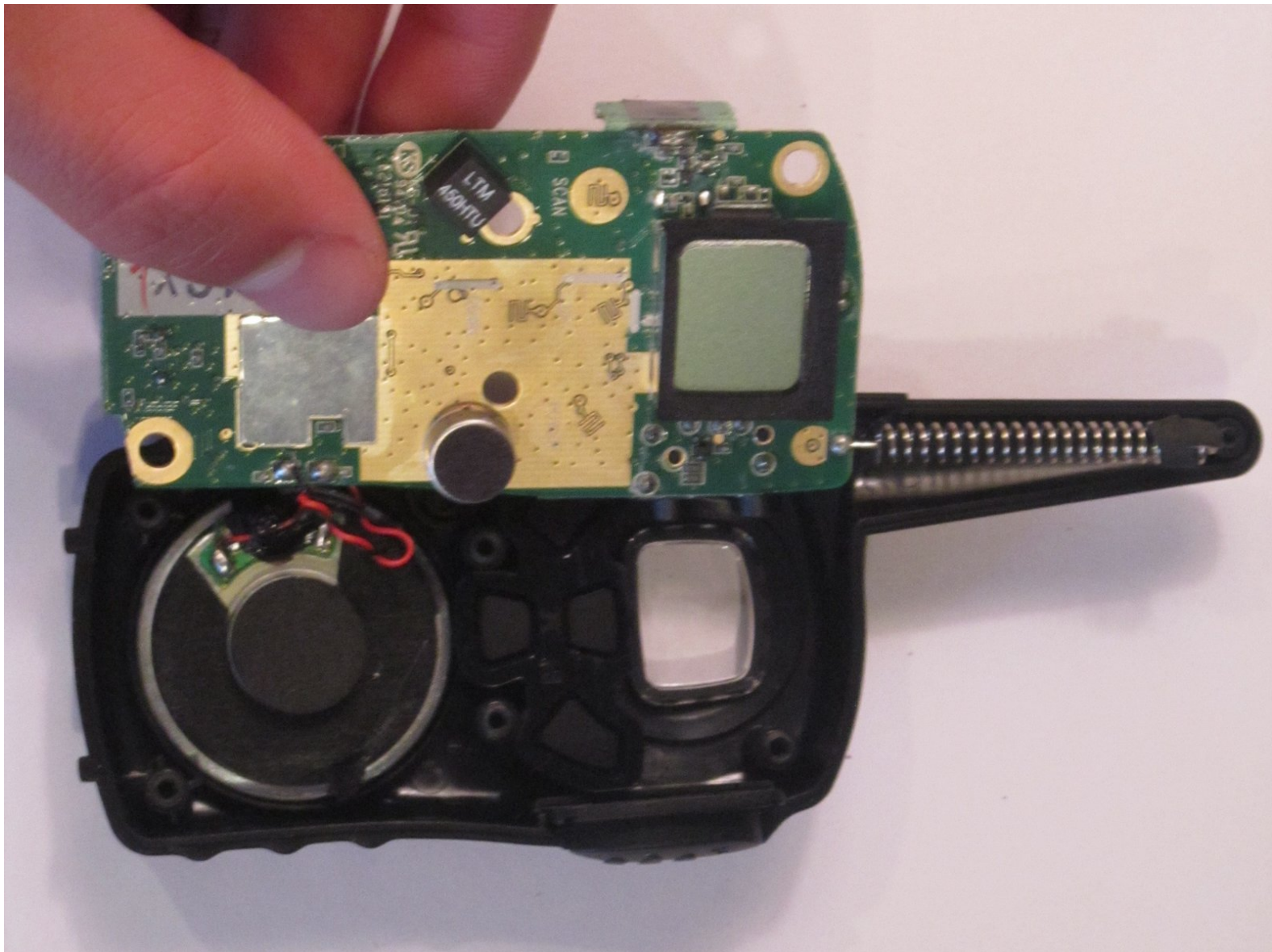




Midland X-tra Talk Radio LXT118 Antenna Replacement

Are you receiving weak signals? Or maybe you aren't even receiving signals at all? Perhaps it is time to check your antenna.

Written By: Andre Nguyen



INTRODUCTION

This guide will display the step-by-step process of fixing and/or replacing a faulty antenna. Soldering may be involved, so be prepared!



TOOLS:

- [Phillips #0 Screwdriver](#) (1)
 - [Spudger](#) (1)
-

Step 1 — Disassembling Midland X-tra Talk Radio LXT118 Batteries



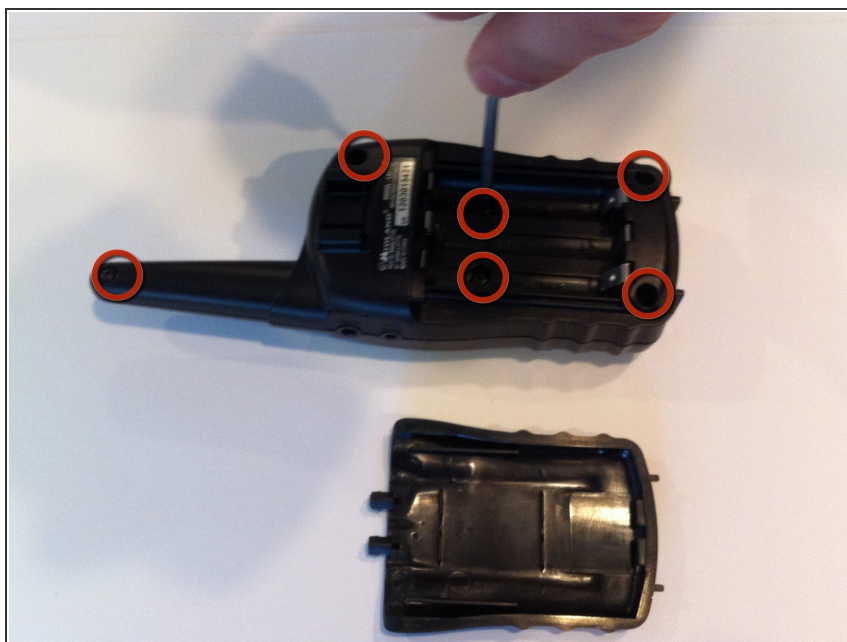
- First, apply pressure with your thumb on the top of the battery cover.
- Next, pull down on the cover until it begins to slide.

Step 2



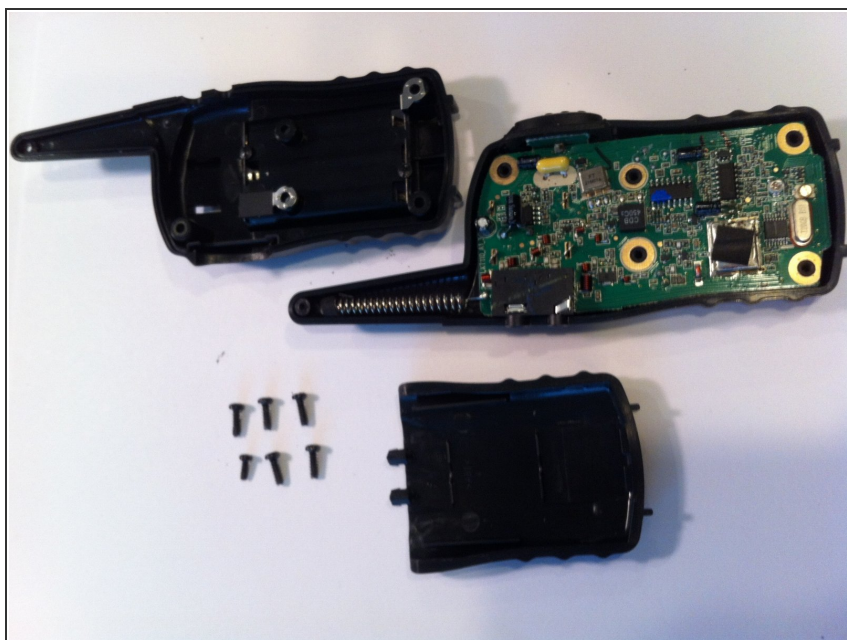
- Finally, once the cover is completely off, pry up the old batteries with your finger or a strong, skinny tool (i.e. spudger).

Step 3 — Case



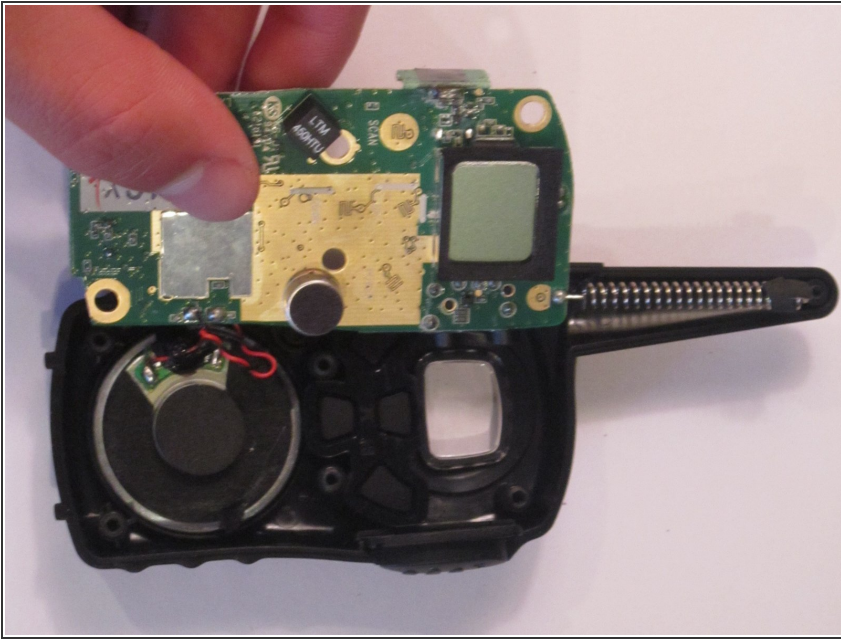
- Unscrew the six 8.0 millimeter long, #0 screws on the backside of the case using the Phillips #0 screwdriver.

Step 4



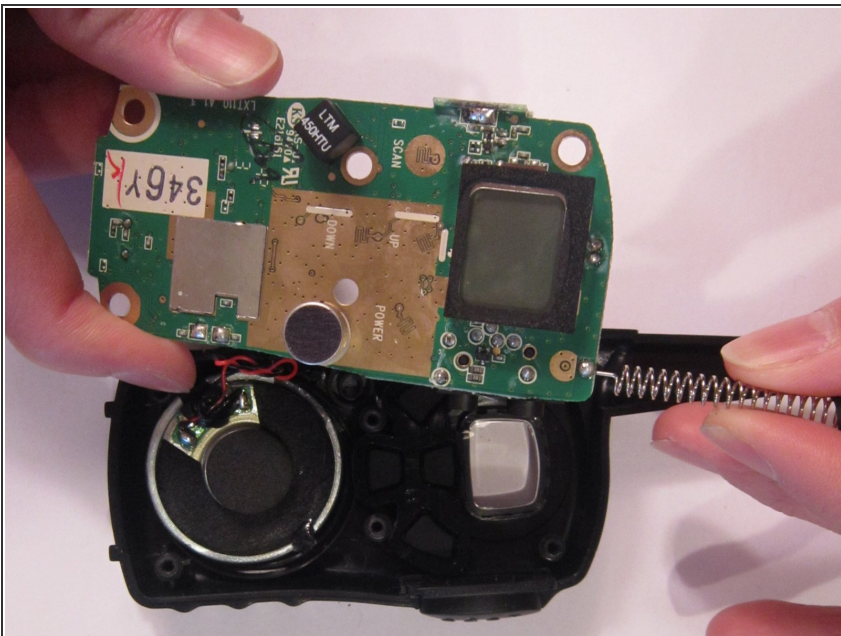
- Detach back part of the case by gently lifting up.

Step 5 — Antenna



- Carefully and slowly lift the motherboard away from the front case. The motherboard will be attached to the speaker, which is firmly glued onto the front case.

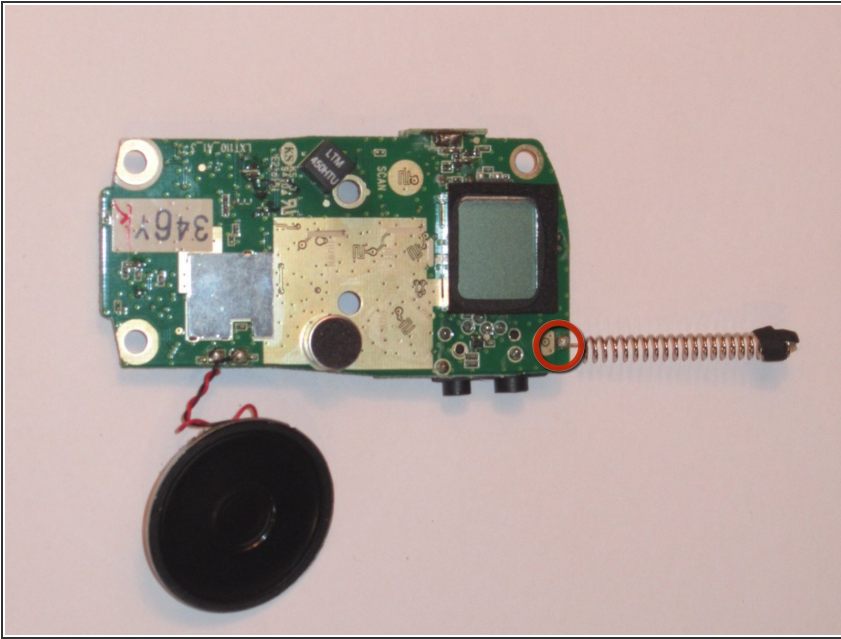
Step 6



- Check the connection of the antenna with your eyes and fingers. The connection should be firm and smooth where it was soldered.
- Ensure that the spring of the antenna isn't crooked or damaged by rubbing your fingers along the length of the spring.

⚠ Desolder the connection of the antenna to the motherboard. *Careful!*, if used improperly, the soldering tool can damage the circuit board!

Step 7



- After obtaining a new or undamaged spring, solder it back onto the circuit board. Again, this is a delicate process as the soldering tool will be *hot!*

To reassemble your device, follow these instructions in reverse order.