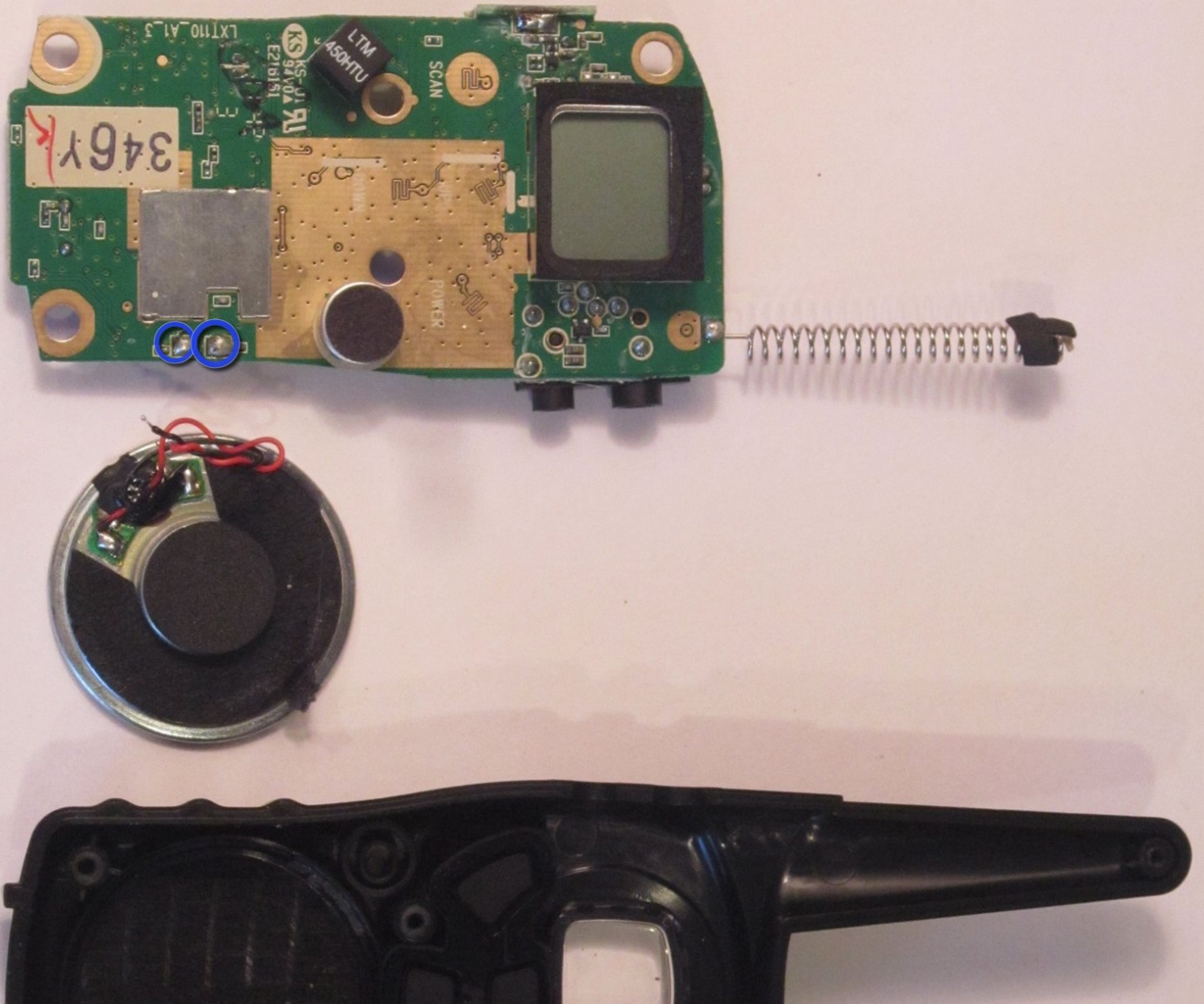




Midland X-tra Talk Radio LXT118 Speaker Replacement

Once a replacement speaker is obtained, it'll need to go back where it came from! Let's get to it!

Written By: James Tucker Dunn



INTRODUCTION

Looks as though some experience with a soldering tool may be necessary, so make sure to be safe with these steps!



TOOLS:

- [5-minute Epoxy](#) (1)
- [Metal Spudger](#) (1)
- [Phillips #0 Screwdriver](#) (1)
- [Polyurethane Glue](#) (1)
- [Soldering Iron](#) (1)



PARTS:

- [Midland Talk Radio Speaker](#) (1)

Step 1 — Disassembling Midland X-tra Talk Radio LXT118 Batteries



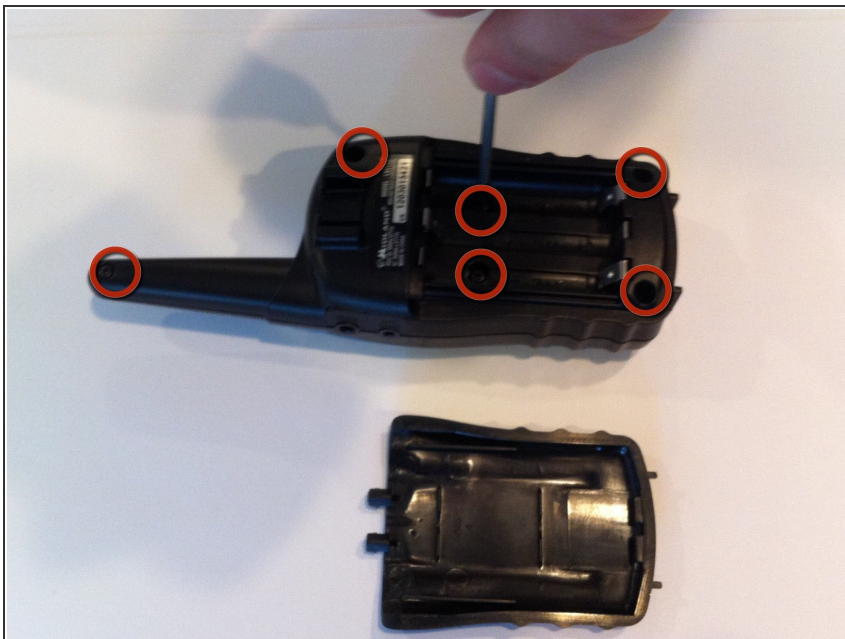
- First, apply pressure with your thumb on the top of the battery cover.
- Next, pull down on the cover until it begins to slide.

Step 2



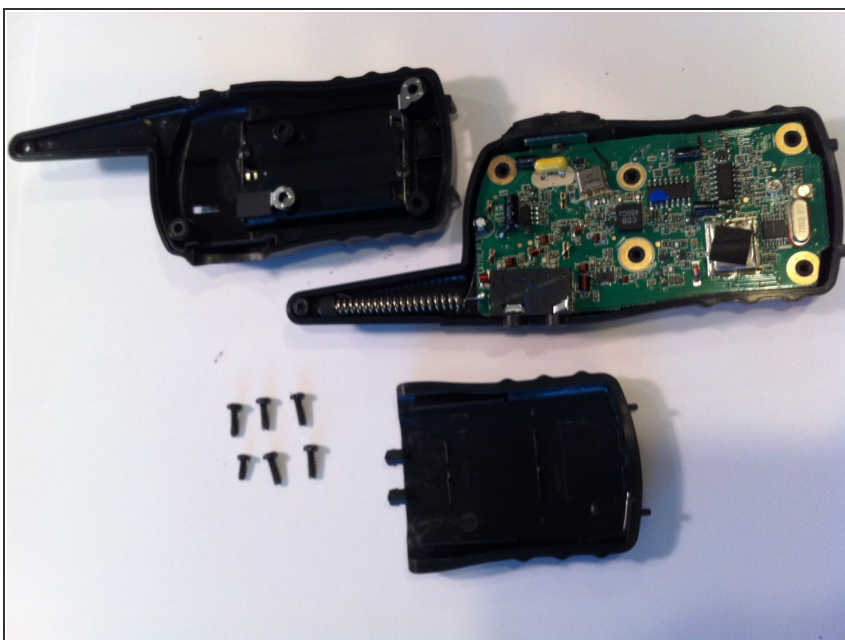
- Finally, once the cover is completely off, pry up the old batteries with your finger or a strong, skinny tool (i.e. spudger).

Step 3 — Case



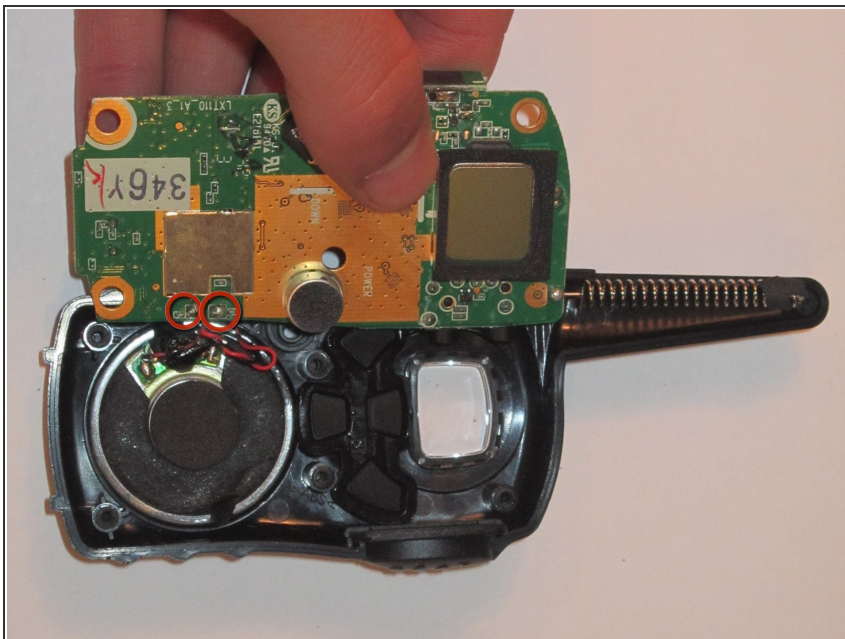
- Unscrew the six 8.0 millimeter long, #0 screws on the backside of the case using the Phillips #0 screwdriver.

Step 4



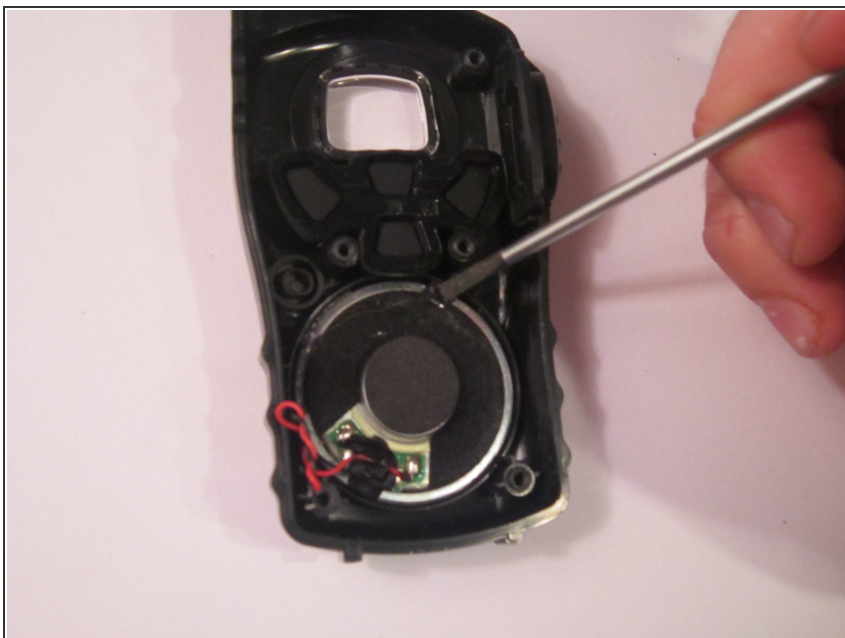
- Detach back part of the case by gently lifting up.

Step 5 — Speaker



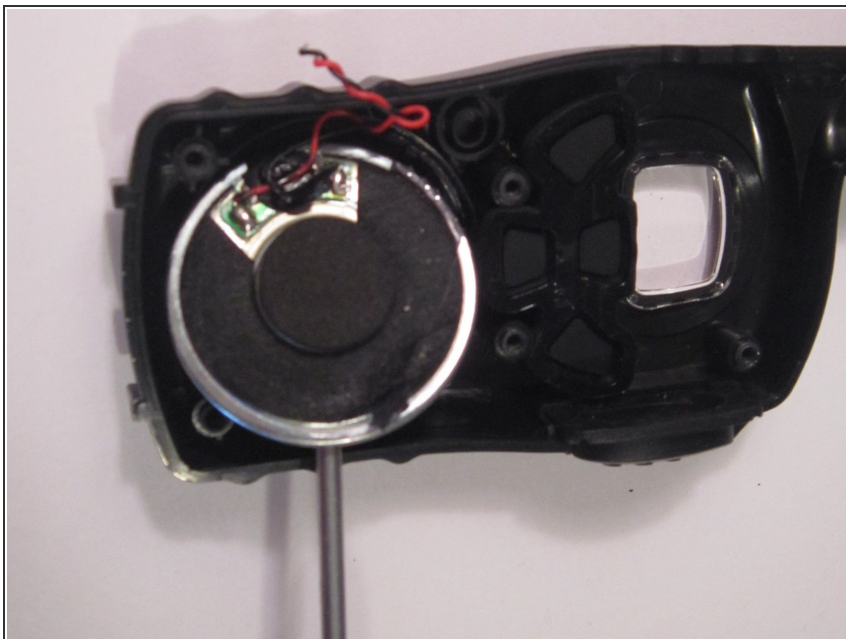
- Remove the circuit board from the front part of the radio case.
- Clip the red and black connecting wires at the base closest to the circuit board in the spots denoted by the two red circles.

Step 6



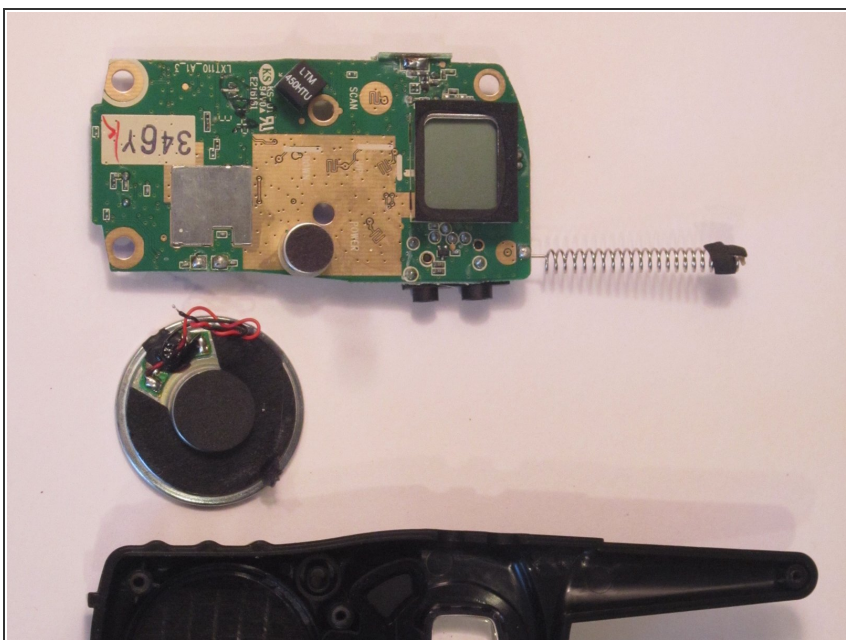
- Scrape off the glue on the outer lining of the speaker using the metal spudger.

Step 7



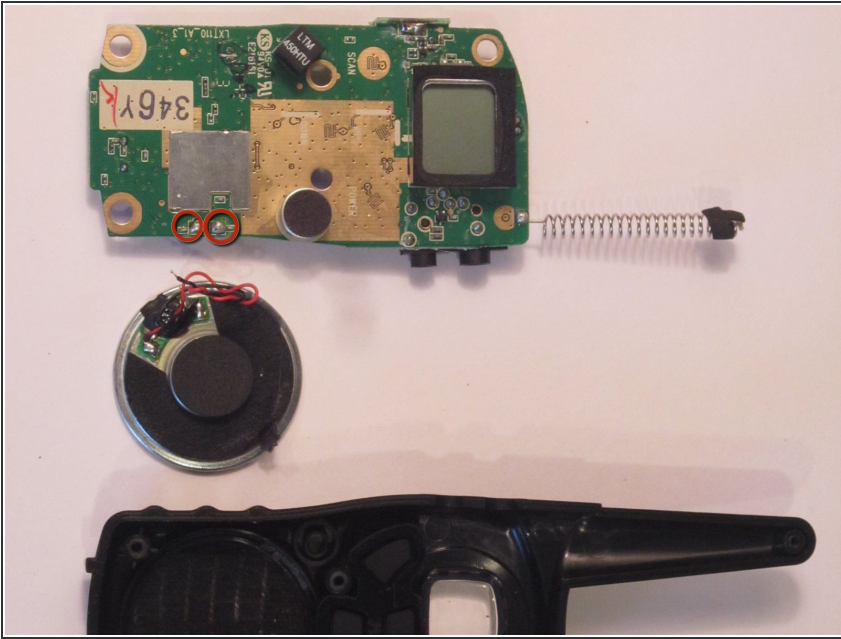
- Pry the speaker from the case using the metal spudger.
- ⓘ This should not take excessive force, so make sure all remaining glue is scraped off from the edges if it will not easily come out.

Step 8



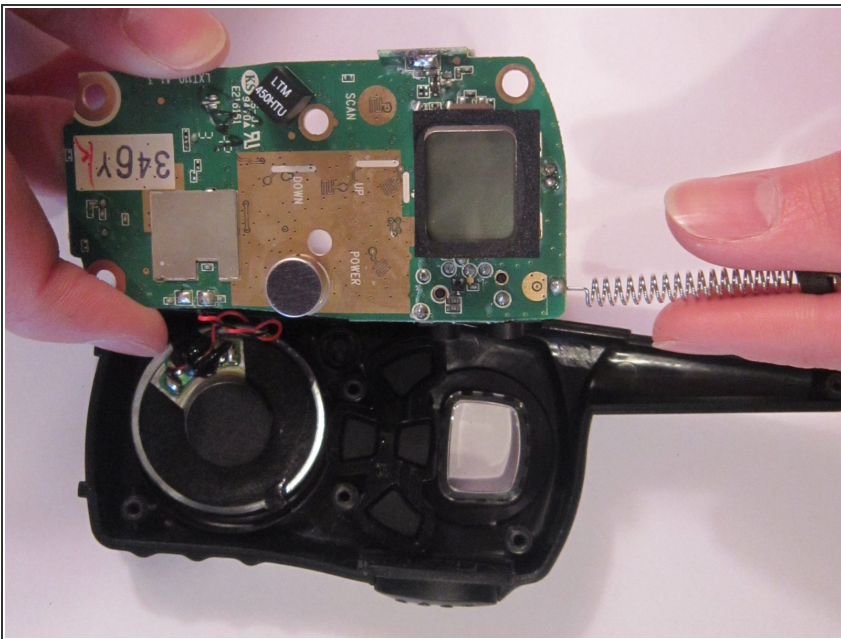
- The speaker is now disassembled!

Step 9 — Speaker



- Solder the new wires to the circuit board in the spots denoted by the two red circles.

Step 10



- Place the speaker back inside the shell casing in the same way that it was originally placed.
- Accurately use a polyurethane glue around the rim of the speaker to mount it firmly back inside the plastic casing.

To reassemble your device, follow these instructions in reverse order.