



# Milton Bradley Simon Light Bulb Replacement

This guide will show how to change the individual light bulbs of the Milton Bradley Simon game.

Written By: Simon Redondo



---

## INTRODUCTION

This guide will show you how to change the individual light bulbs from the Simon game. The repair is fairly simple and only requires the use of a Phillips head screwdriver.



### TOOLS:

- [Phillips #1 Screwdriver](#) (1)
-

## Step 1 — Light Bulb



- Make sure the game is powered off by switching the On/Off switch to the left.

## Step 2



- Take off the green and red switches on top of the game by pulling them off.

## Step 3



- Flip the game over.

## Step 4



- Slide the battery cover off of the back.

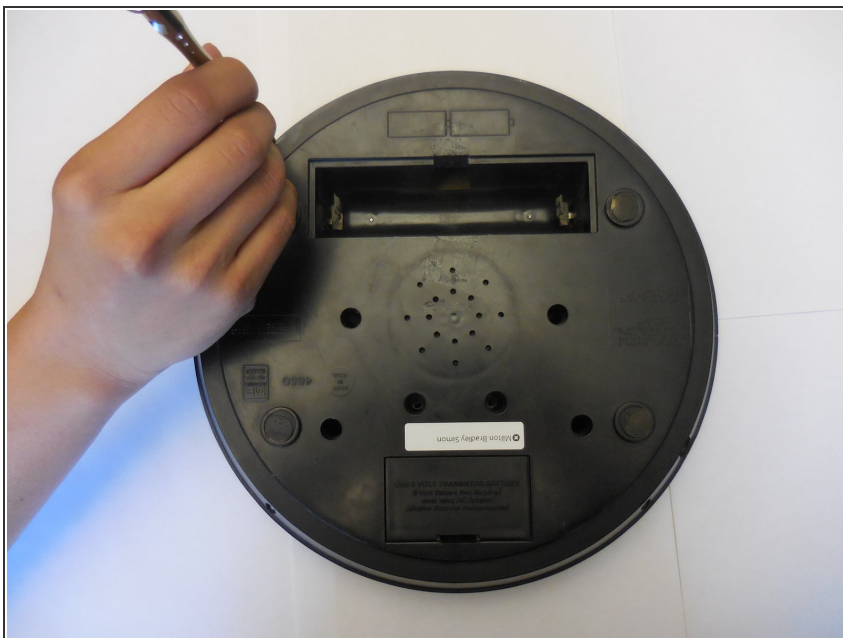


## Step 5



- Take out the batteries.

## Step 6



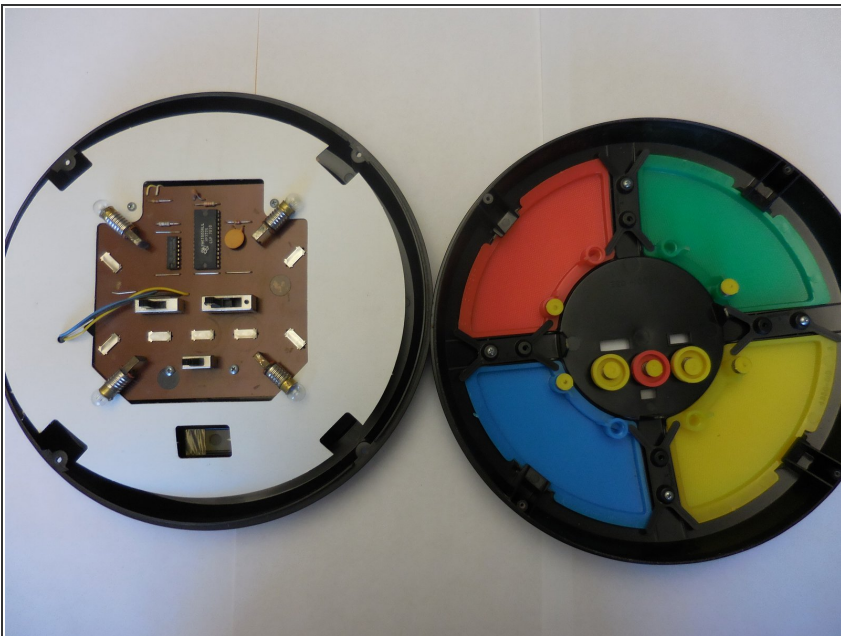
- Use the Phillips Head screwdriver to unscrew the screws located at the four corners of the game.

## Step 7



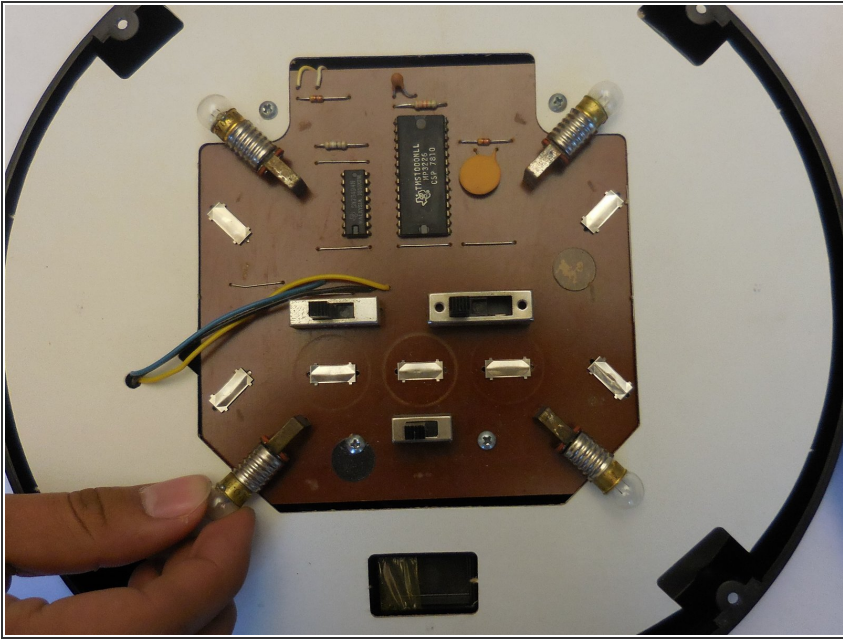
- Pull off the back plastic case of the game.

## Step 8



- Carefully place the top half of the game aside.
- ⓘ The top half is the half with the colored panels. Carefully place this half aside so the buttons do not fall out of place.

## Step 9



- Unscrew the 4 light bulbs from the bottom half of the game.

Follow these steps in reverse to reassemble the device.