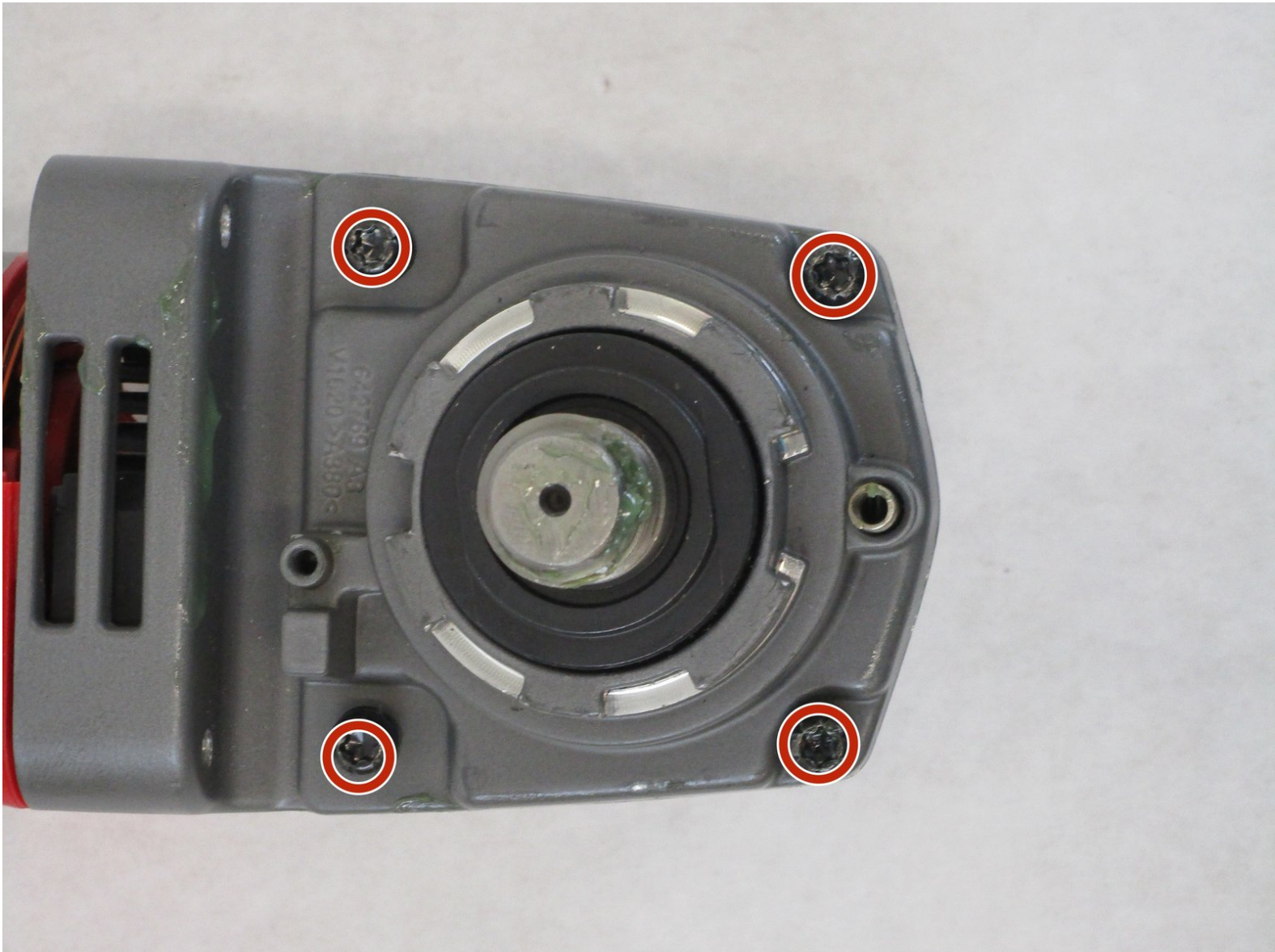




Milwaukee 2780-20 (2) Ball Bearings Replacement

This is a guide to replace the Ball Bearings for the Milwaukee 2780-20 angle grinder.

Written By: Chris Hopper



INTRODUCTION

Do you know what happens when your grinder overheats? If not, this is a quick guide on how to change the ball bearings. A ball bearing is a ring consisting of small solid metal balls between a wheel and a fixed axle, in which the rotating parts and stationary parts are separated to reduce friction. A damaged or worn ball bearing will reduce the performance of your grinder and ultimately destroy it completely.



TOOLS:

- [T20 Torx Screwdriver](#) (1)
 - [Mahi Driver Kit - 48 Bit Driver Kit](#) (1)
 - [T10 Torx Screwdriver](#) (1)
 - [T15 Torx Screwdriver](#) (1)
 - [3/8" Wrench](#) (1)
 - [Hammer](#) (1)
-

Step 1 — Trigger Assembly



- Using a Torx T20 screwdriver, unscrew the four 16mm screws from the case.
- Switch to the Torx T10 screwdriver, and remove the last 16mm screw from the hilt.

Step 2



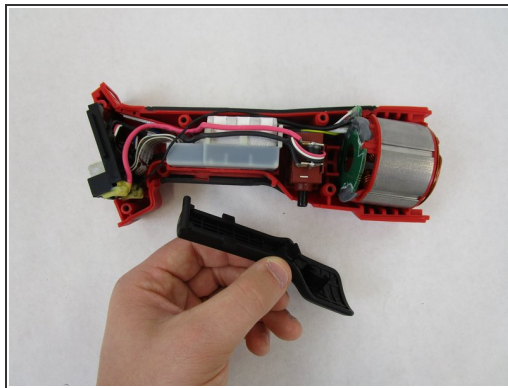
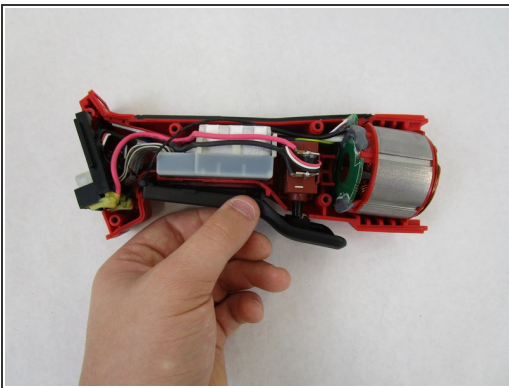
- Using the Torx T20 screwdriver, unscrew the four 28mm screws located at the bottom (and top) of the gearcase assembly.
- Remove the two 12mm screws with a Torx T20 screwdriver in order to get to the others.

Step 3



- Pull apart the housing handles.

Step 4



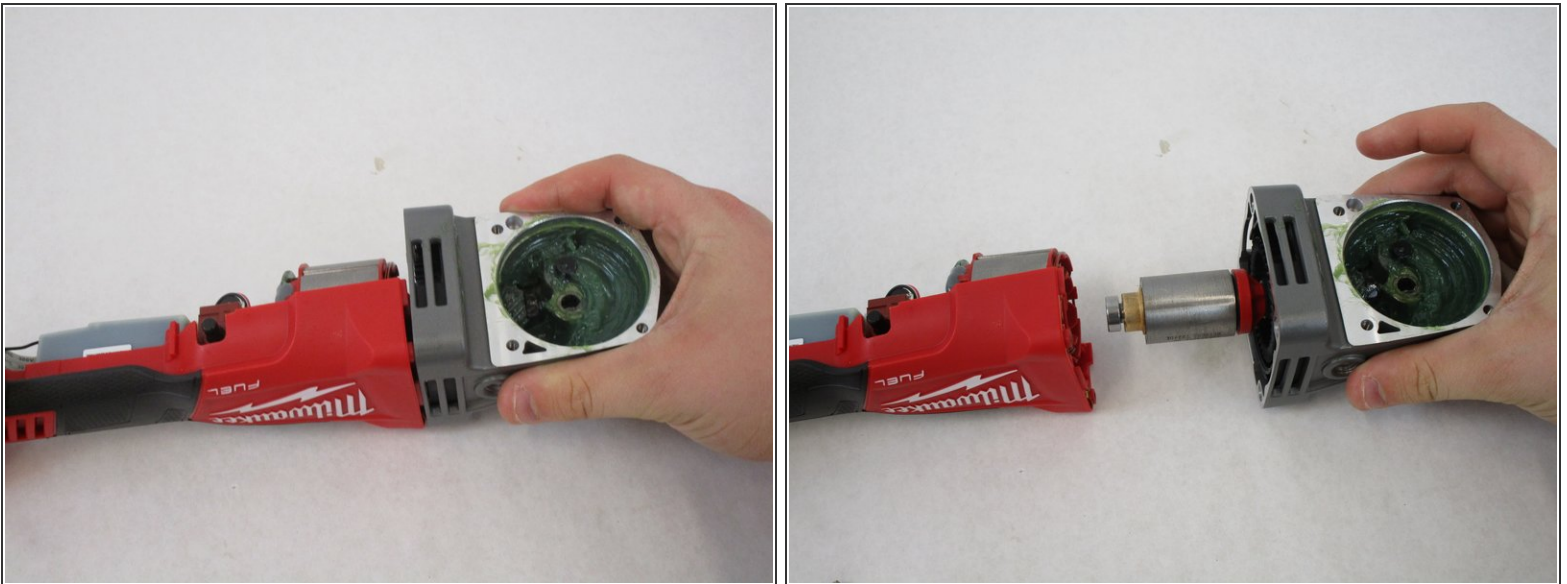
- Lift the trigger assembly off of its mount.
- Dispose of the old trigger assembly and install the new one.

Step 5 — (2) Ball Bearings



- Using a Torx T20 screwdriver to remove four 6mm screws located on top of the gearcase assembly.

Step 6



- Pull the gearcase away from electronic assembly to expose the inside.

Step 7



- Using a 3/8 Wrench, Remove the nut located in the center of the Gearcase.
- The nut and pinion should immediately come apart from the rotor assembly.

Step 8



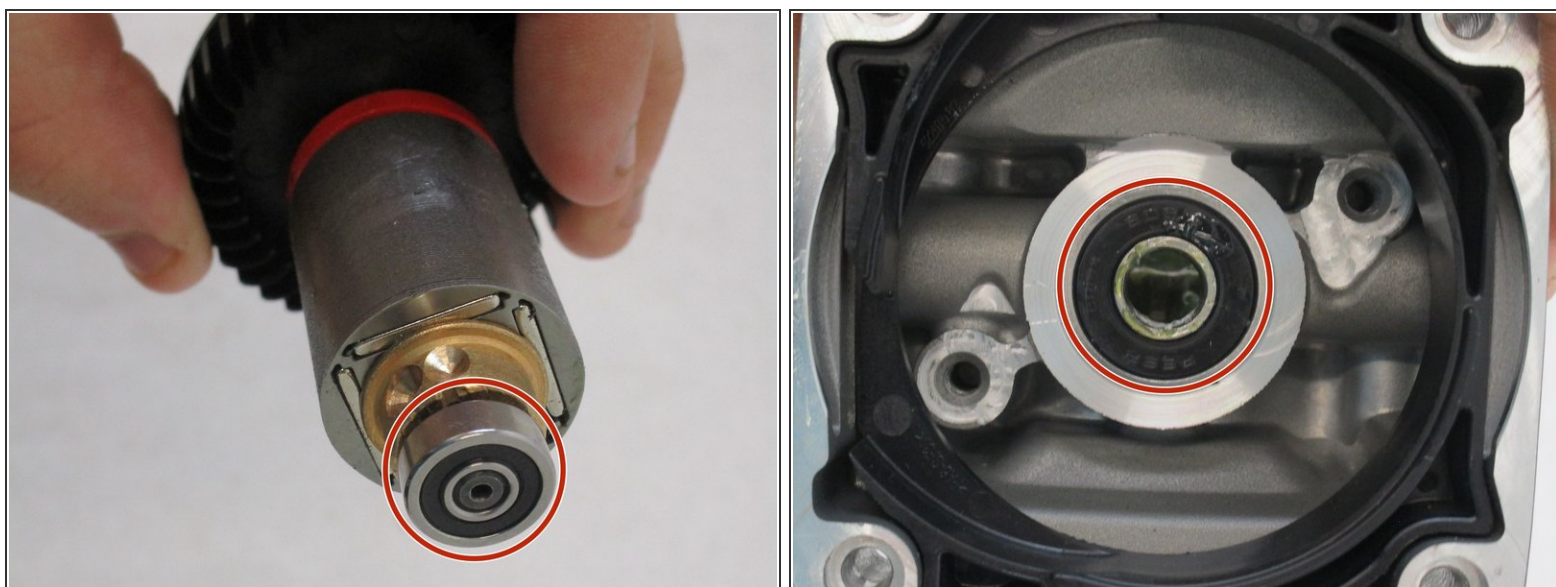
- Pull the rotor assembly apart from the gearcase casing.

Step 9



- Using a Torx T15 screwdriver, remove the two 4mm screws to take the bearing retainer off.

Step 10



- Use a hammer to knock out the bearing and begin installing the new one before reassembling.

To reassemble your device, follow these instructions in reverse order.