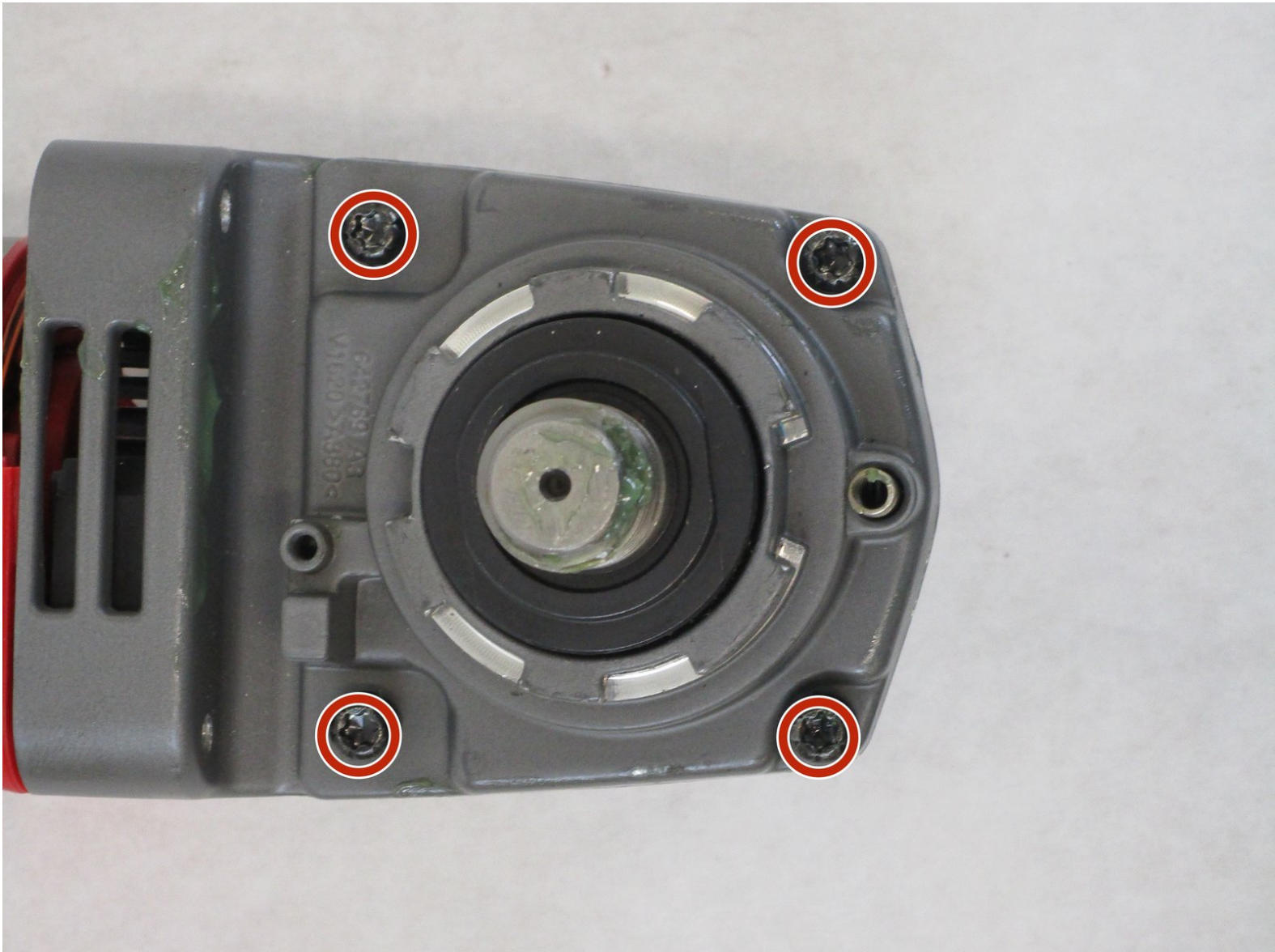




Milwaukee 2780-20 Rotor Assembly Replacement

This is a guide to replace the rotor assembly for the Milwaukee 2780-20 angle grinder.

Written By: Jimmy Jennings



INTRODUCTION

Here is a guide that will show you how to replace the rotor assembly if the grinder isn't functioning properly. A malfunctioning rotor assembly will cause the grinder to not work properly. The rotor assembly is very important to the operation of the grinder. With tools that work as they should it makes your projects a lot easier.



TOOLS:

- [T20 Torx Screwdriver](#) (1)
- [Mahi Driver Kit - 48 Bit Driver Kit](#) (1)
- [T10 Torx Screwdriver](#) (1)
- [T15 Torx Screwdriver](#) (1)
- [3/8" Wrench](#) (1)

Step 1 — Trigger Assembly



- Using a Torx T20 screwdriver, unscrew the four 16mm screws from the case.
- Switch to the Torx T10 screwdriver, and remove the last 16mm screw from the hilt.

Step 2



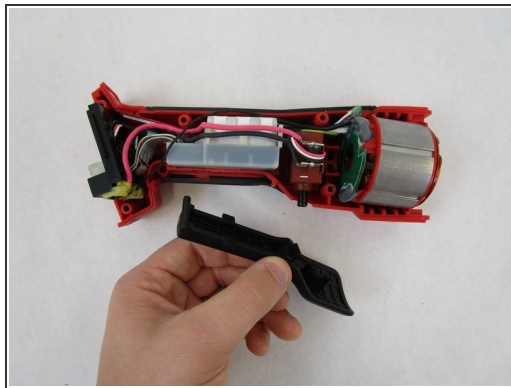
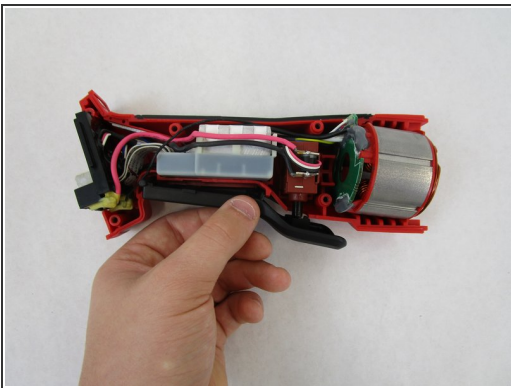
- Using the Torx T20 screwdriver, unscrew the four 28mm screws located at the bottom (and top) of the gearcase assembly.
- Remove the two 12mm screws with a Torx T20 screwdriver in order to get to the others.

Step 3



- Pull apart the housing handles.

Step 4



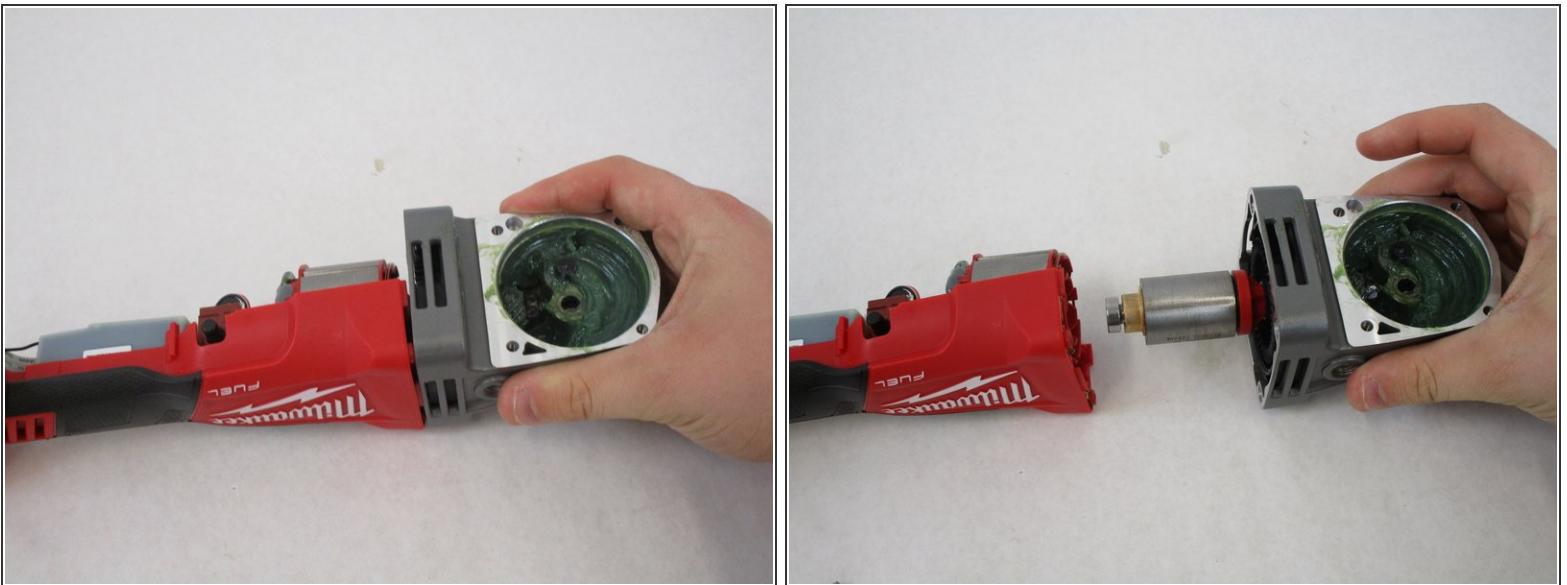
- Lift the trigger assembly off of its mount.
- Dispose of the old trigger assembly and install the new one.

Step 5 — Rotor Assembly



- Using a Torx T20 screwdriver, unscrew the four 6mm screws located at the top of the gearcase assembly.
- Pull apart the top of the gearcase assembly to expose the inside of it.

Step 6



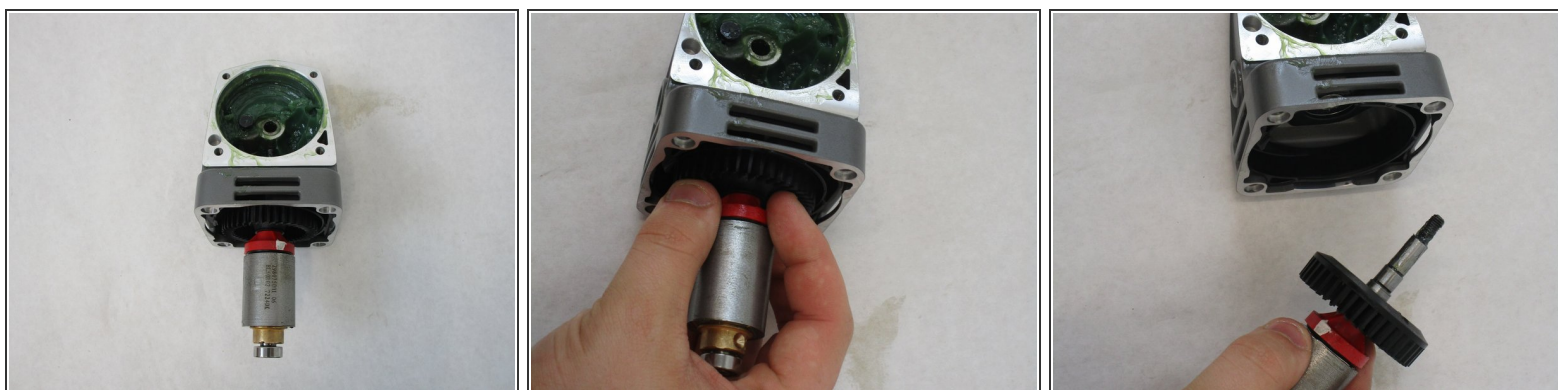
- Pull the Gearcase Assembly away from the electronic kit.

Step 7



- Using a 3/8 wrench, remove the nut located in the center of the Gearcase.
- The nut and pinion will immediately come apart from the Rotor assembly.

Step 8



- Pull the rotor assembly away from the gearcase assembly.

To reassemble your device, follow these instructions in reverse order.