



Written By: Chris Hopper



## INTRODUCTION

Is your Angle Grinder's trigger not working? If so, here is the guide to fix the problem with a simple change of a trigger assembly. The trigger assembly is the one of the main components for the grinder. Basically, a squeeze of the trigger turns on the electric motor inside thus making the tool run. Without a fully functioning trigger, the machine would not be able to turn on. All you need to make the repair is a Torx T20 and a Torx T10 screwdriver to remove two different types of screws involved with this replacement.

---

### TOOLS:

- [T20 Torx Screwdriver](#) (1)
  - [T10 Torx Screwdriver](#) (1)
  - [Mahi Driver Kit - 48 Bit Driver Kit](#) (1)
-

## Step 1 — Trigger Assembly



- Using a Torx T20 screwdriver, unscrew the four 16mm screws from the case.
- Switch to the Torx T10 screwdriver, and remove the last 16mm screw from the hilt.

## Step 2



- Using the Torx T20 screwdriver, unscrew the four 28mm screws located at the bottom (and top) of the gearcase assembly.
- Remove the two 12mm screws with a Torx T20 screwdriver in order to get to the others.

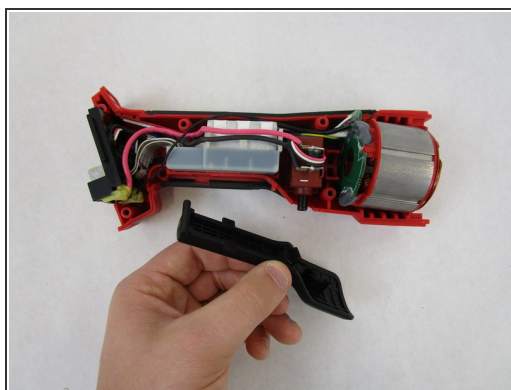
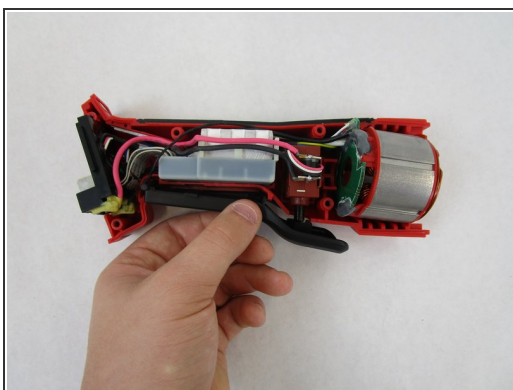


### Step 3



- Pull apart the housing handles.

### Step 4



- Lift the trigger assembly off of its mount.
- Dispose of the old trigger assembly and install the new one.

To reassemble your device, follow these instructions in reverse order.