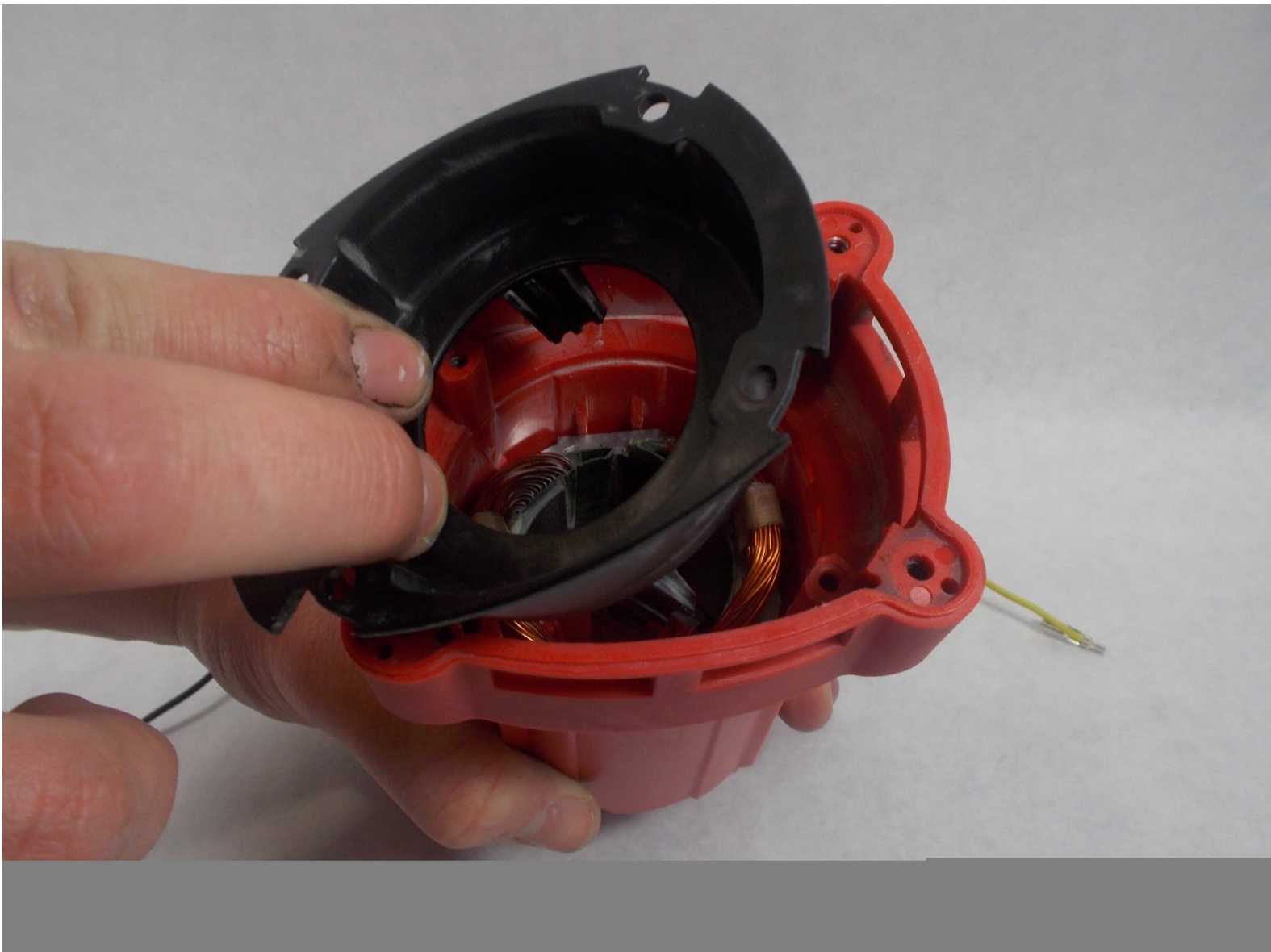




Milwaukee 5262-21 Fan Baffle Replacement

This guide will explain how to replace the fan baffle in a Milwaukee 5262-21 rotary hammer.

Written By: Andrew Floyd



INTRODUCTION

In this guide, you will get a step by step basis on replacing the fan baffle. You will need to remove 4 screws in order to get to the fan baffle, this guide will show you where exactly these screws are.



TOOLS:

- [T20 Torx Screwdriver](#) (1)
- [T10 Torx Screwdriver](#) (1)
- [T15 Torx Screwdriver](#) (1)
- [Metal Spudger](#) (1)



PARTS:

- [Milwaukee 5262-21 fan baffle](#) (1)

Step 1 — Housing Assembly



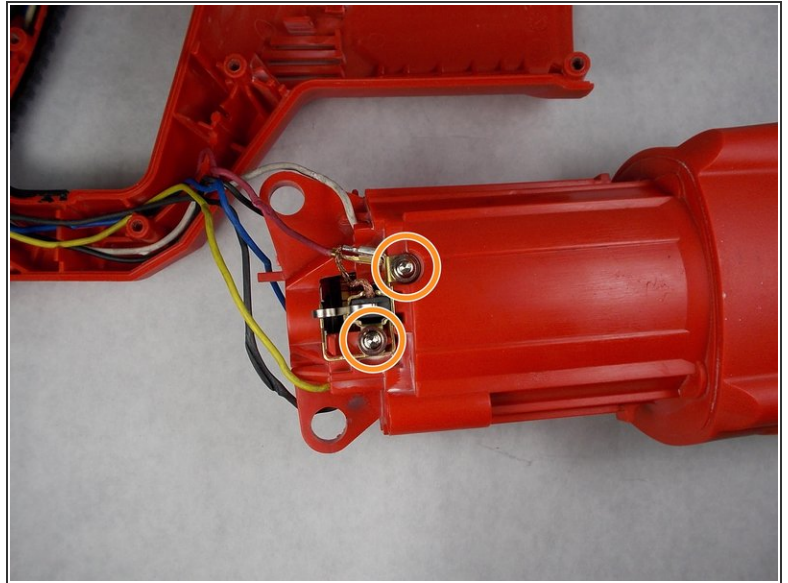
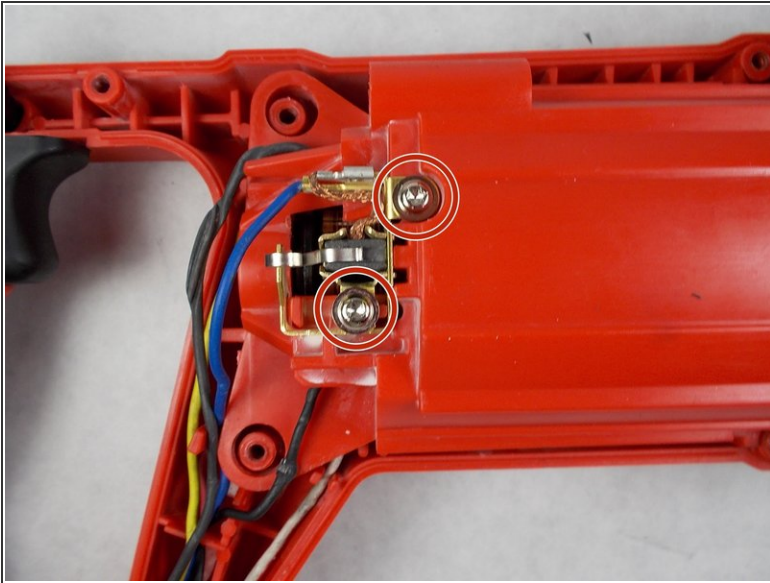
- Remove the ten 19mm T20 Torx screws shown in red.

Step 2



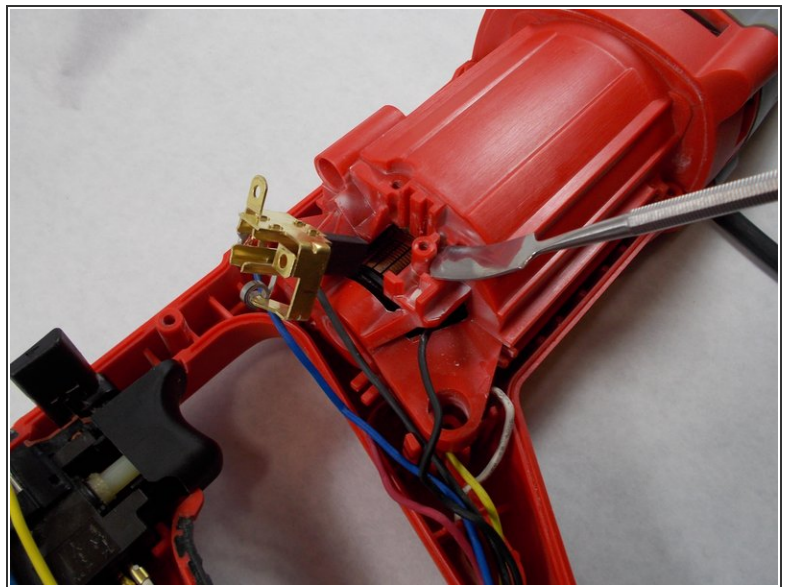
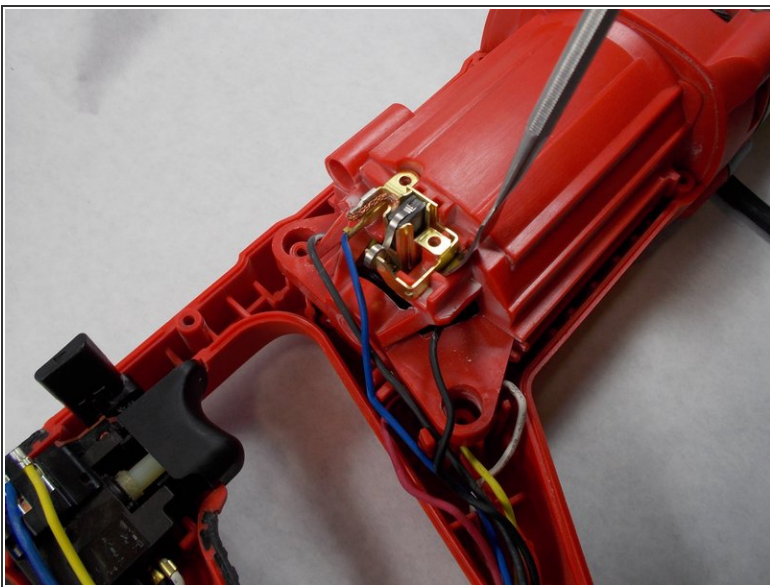
- Remove the red Housing Assembly by lifting it up off of the tool.

Step 3 — Fan Baffle



- Now the two 10mm T-10 screws shown in red can be removed.
- Next, remove the two 10mm T-10 screws located on the other side of the tool shown in orange.

Step 4



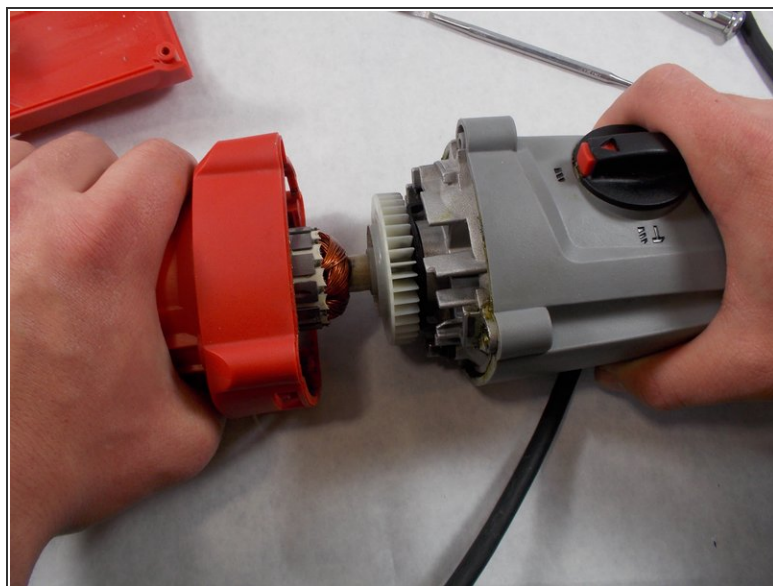
- Using the metal spudger, remove each brush holder as shown in the images.

Step 5



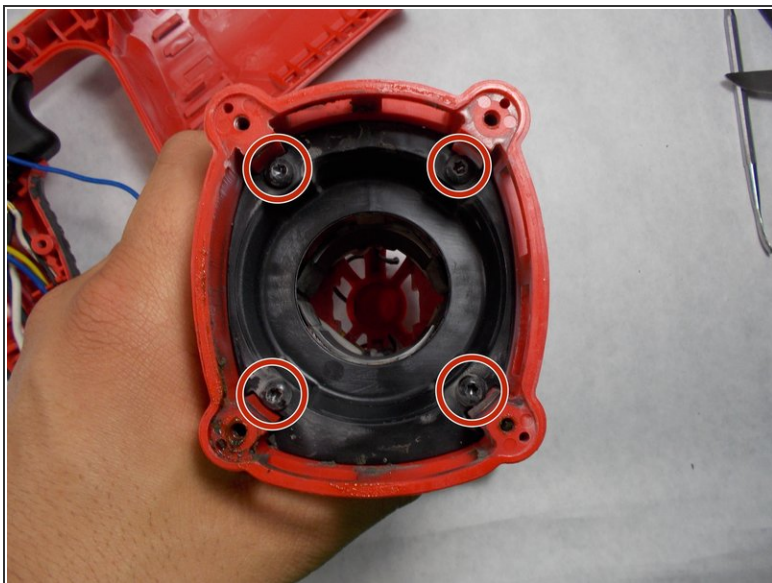
- Remove the four 37mm T-20 screws shown in red. These screws attach the gear housing to the motor housing.

Step 6



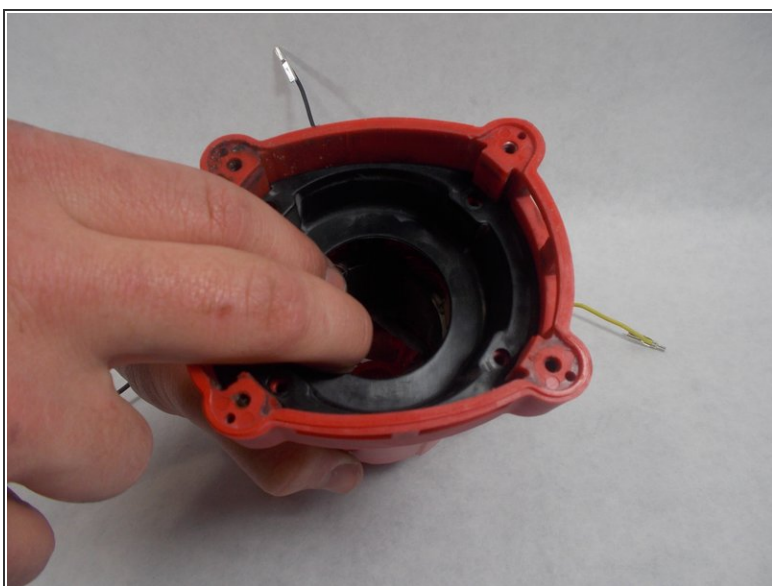
- After removing the four screws, pull apart the the two sections.

Step 7



- Remove the four 12mm screws with a T-15 Torx screwdriver shown in red.
- These screws hold the fan baffle in place.

Step 8



- Remove the fan baffle by pulling it out.

To reassemble your device, follow these instructions in reverse order.