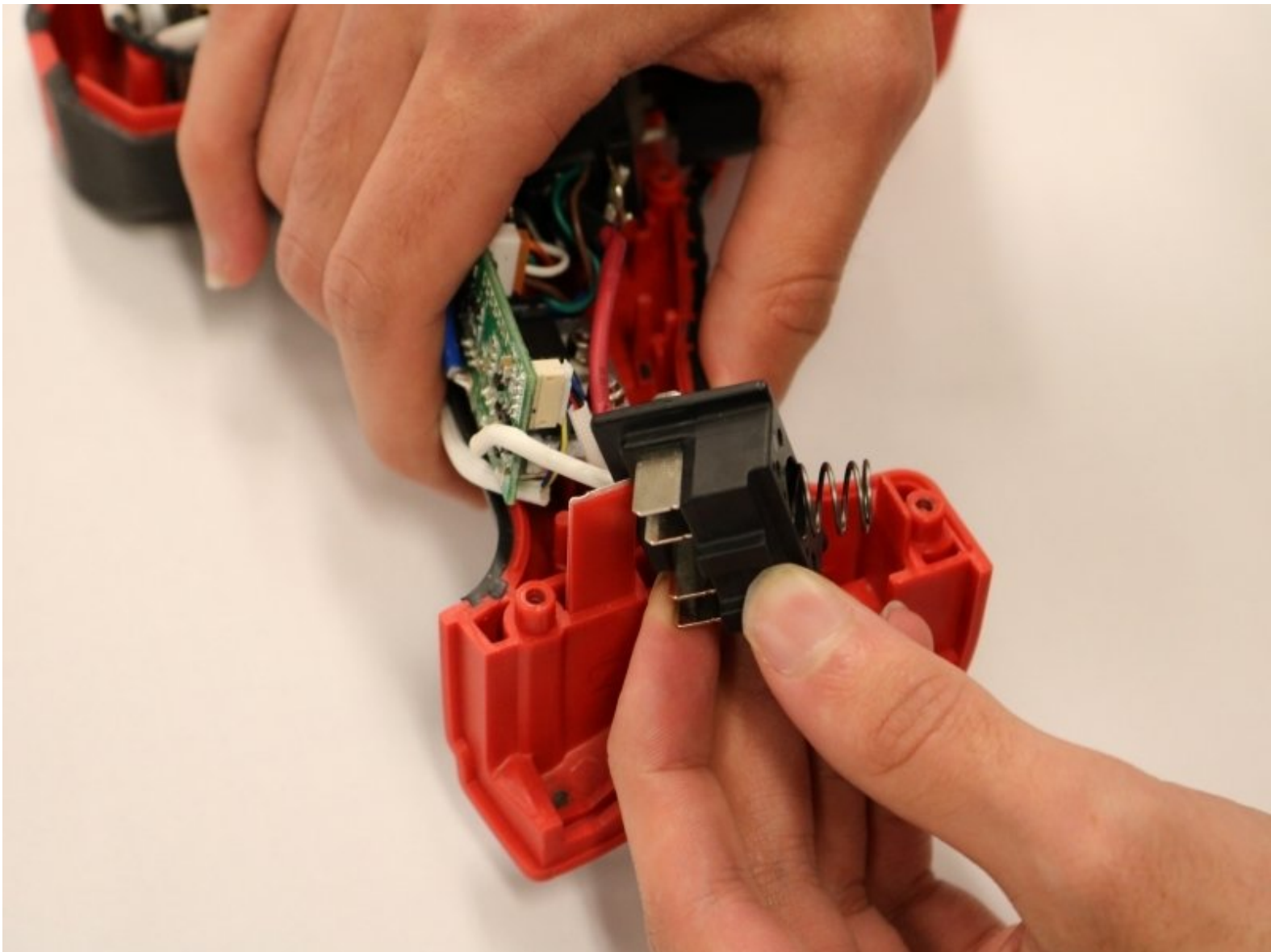




Milwaukee Hackzall 2625-20 Terminal Block Replacement

This guide will show you how to replace a faulty Terminal block in the Milwaukee Hackzall 2625-20.

Written By: Mason Jones



INTRODUCTION

If your Milwaukee Hackzall 2625-20 is no longer receiving power, the battery or terminal block may need to be replaced. Battery replacement is as simple as using or buying another rechargeable battery however, the terminal block needs to be replaced using the following steps. The use of a soldering iron is required to remove wiring around the terminal block so soldering skills and knowledge are needed. For more information on soldering, follow this [guide](#).



TOOLS:

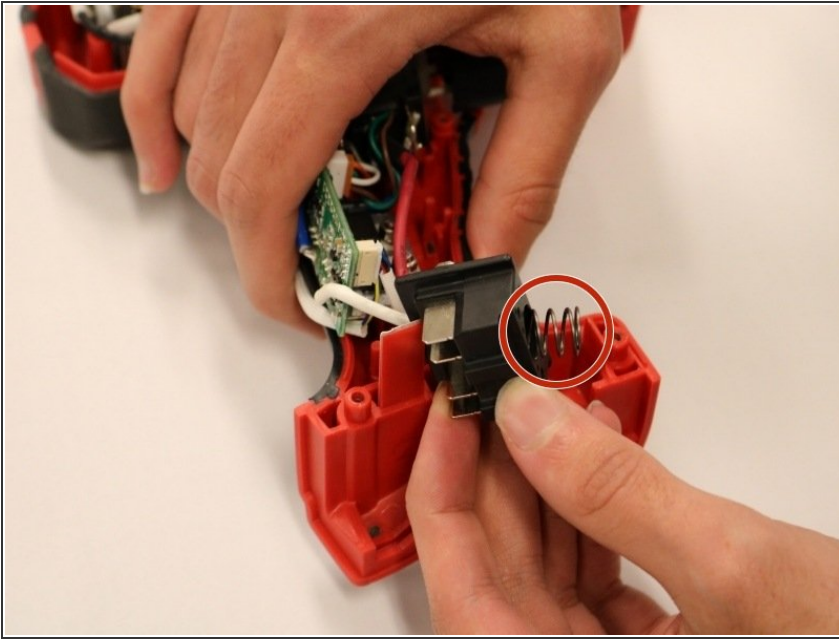
- [T10 Torx Screwdriver](#) (1)
 - [T15 Torx Screwdriver](#) (1)
 - [T9 Torx Screwdriver](#) (1)
 - [Soldering Iron](#) (1)
-

Step 1 — Outer Casing



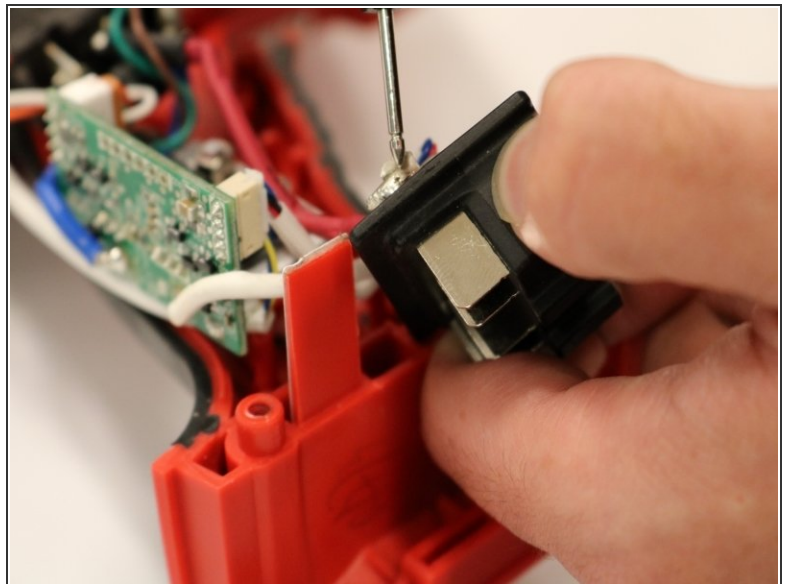
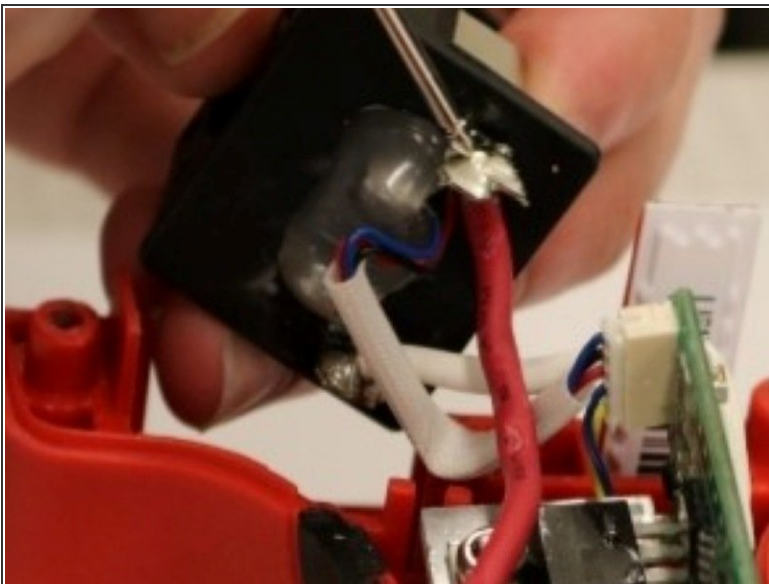
- Remove the screws holding the shell of the device together. Each screw size varies; you will use a T9 Torx screwdriver for one size 7.0 mm.
- Use a T10 Torx screwdriver to remove one 14.0 mm screw.
- Use a T15 Torx screwdriver for the remaining eight screws that are 16.0 mm.
- Remove the casing to reveal all of the internal components.

Step 2 — Terminal Block



- Carefully remove the terminal block from the casing and note that there is a spring set into it.

Step 3



- Use a soldering iron to melt any existing soldered attachments.

To reassemble your device, follow these instructions in reverse order.