



Milwaukee Hex Impact Driver 2656-20 Case Disassembly

This guide will show you how to disassemble the outer case of the Milwaukee Hex Impact Driver 2656-20.

Written By: BRYCE DICKERSON



INTRODUCTION

This guide will demonstrate how to Disassemble the case for the Milwaukee Hex Impact Driver 2656-20. The First step will cover battery removal. The only tool required for this disassembly is a T-10 Torx Screwdriver. The repair is considered easy in difficulty and will take approximately 5 minuets.



TOOLS:

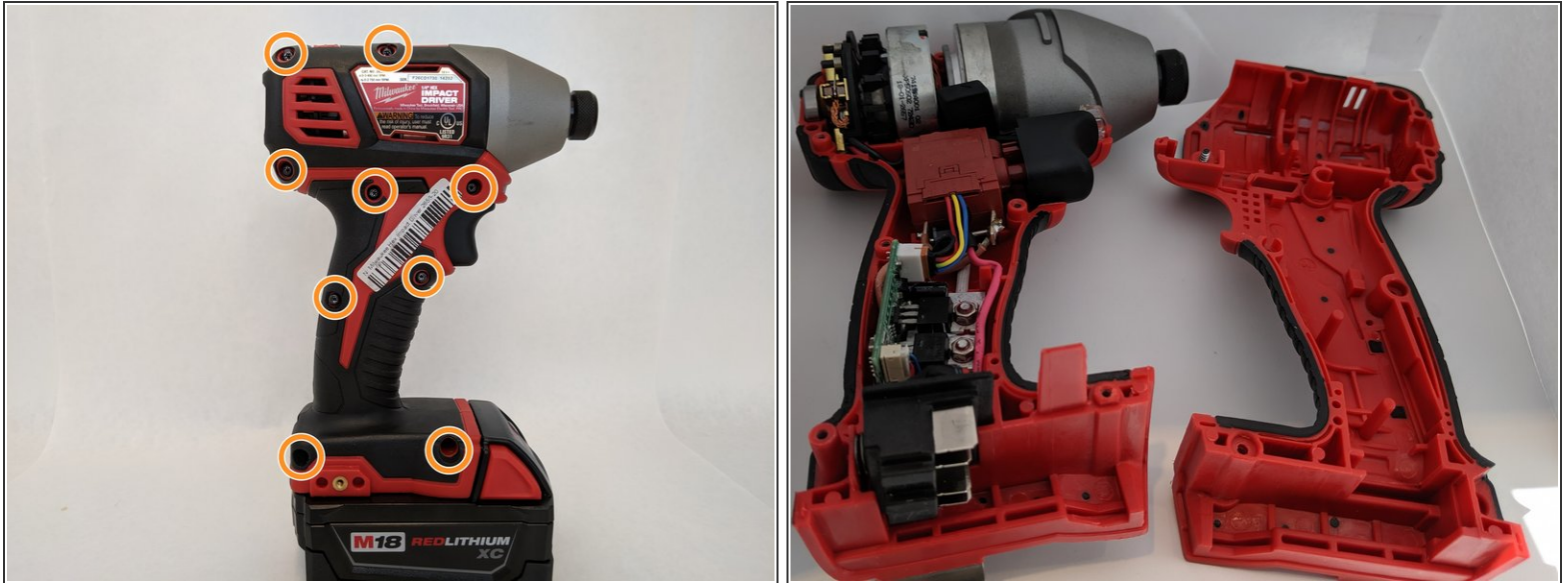
- [T10 Torx Screwdriver](#) (1)
-

Step 1 — Battery



- Squeeze the red buttons on the battery.
- While squeezing the red buttons, slide the battery forward and out to remove it from the device.

Step 2 — Milwaukee Hex Impact Driver 2656-20 Case Disassembly



- Lay the impact driver on its side.
- Remove eight 16 mm and a single 19 mm screws using the T10 Torx Screwdriver.
- Separate the two halves by pulling up on the top half.
- ⓘ Make sure that the half with the screw heads is facing up during this process. This will ensure that the components do not fall out.
- Lay the top half to the side.

To reassemble your device, follow these instructions in reverse order.