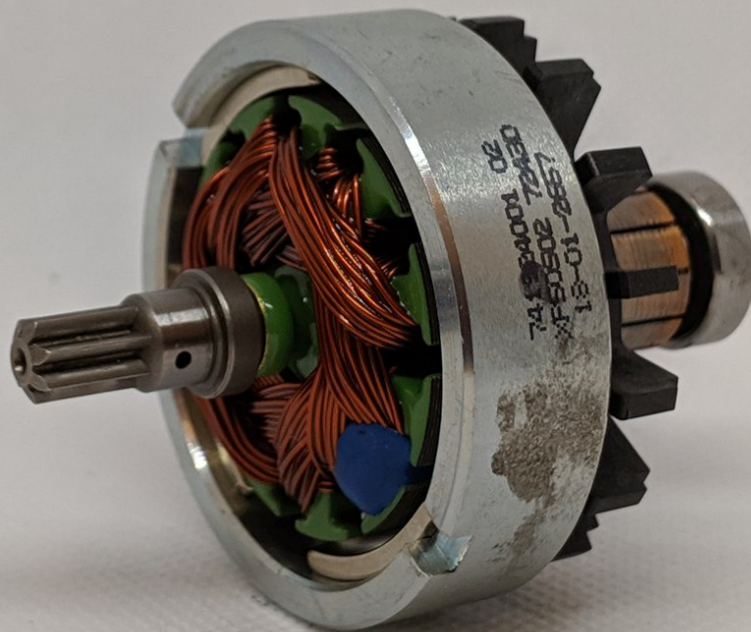




Milwaukee Hex Impact Driver 2656-20 Electric Motor Replacement

Use this guide to remove the electric motor in your Milwaukee Hex Impact Driver 2656-20.

Written By: BRYCE DICKERSON



INTRODUCTION

This guide will demonstrate how to replace the Electric Motor on the Milwaukee Hex Impact Driver 2656-20. The first two steps will cover disassembly of the drill. The tools required for this repair consists of a T-10 Torx Screwdriver and a Soft Plastic Pick. The repair is considered Difficult in difficulty and will take approximately 25 minutes.

The steps in this guide are the same as the brush block assembly replacement guide.



TOOLS:

- [T10 Torx Screwdriver](#) (1)
- [iFixit Opening Picks set of 6](#) (1)



PARTS:

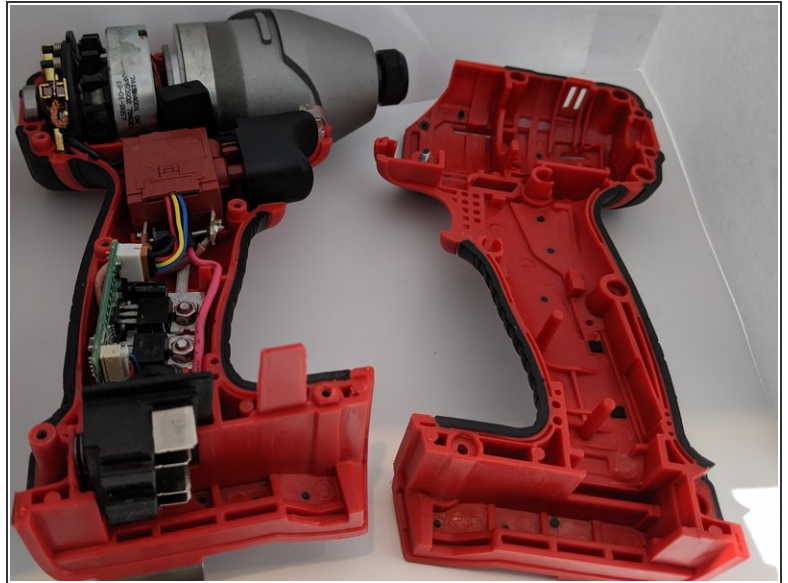
- [PN 18-01-2657 Field Assembly](#) (1)
- [PN 16-07-2657 Armature Assembly](#) (1)

Step 1 — Battery



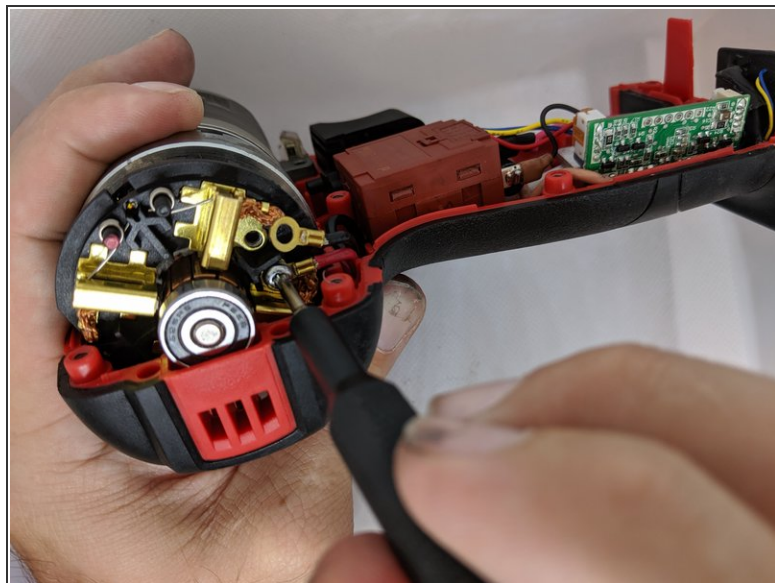
- Squeeze the red buttons on the battery.
- While squeezing the red buttons, slide the battery forward and out to remove it from the device.

Step 2 — Milwaukee Hex Impact Driver 2656-20 Case Disassembly



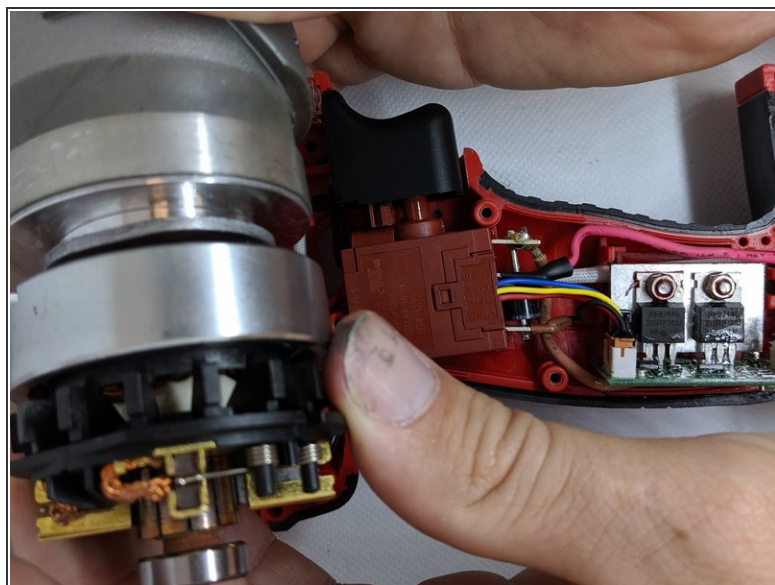
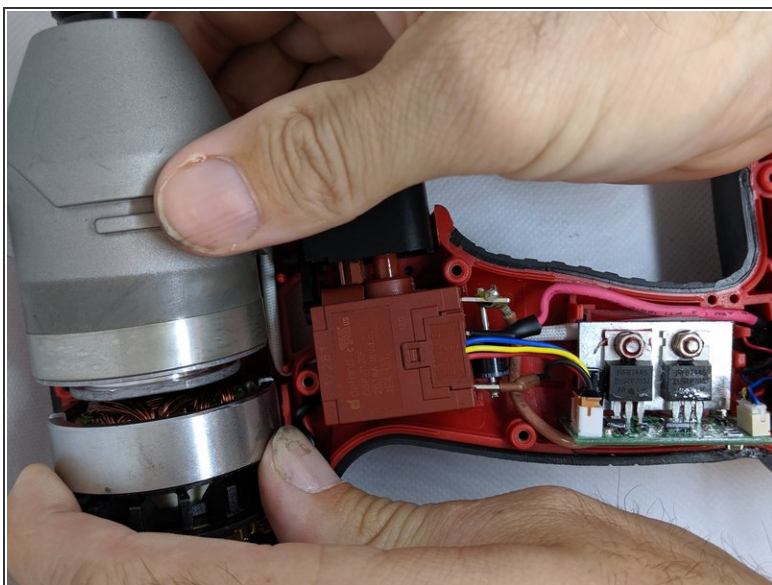
- Lay the impact driver on its side.
- Remove eight 16 mm and a single 19 mm screws using the T10 Torx Screwdriver.
- Separate the two halves by pulling up on the top half.
- ⓘ Make sure that the half with the screw heads is facing up during this process. This will ensure that the components do not fall out.
- Lay the top half to the side.

Step 3 — Electric Motor



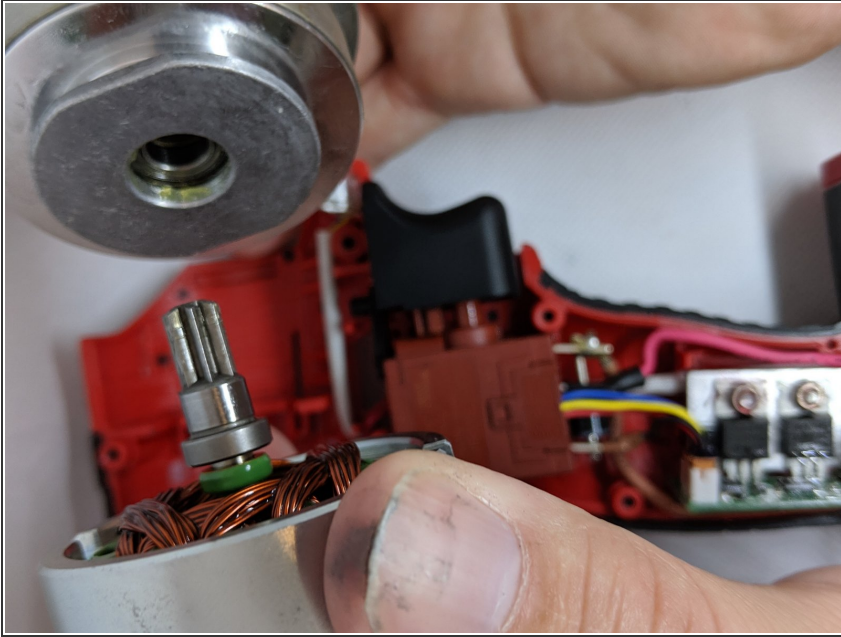
- Remove the two 6mm screws on the back of the brush card assembly using the T10 Torx screwdriver.

Step 4



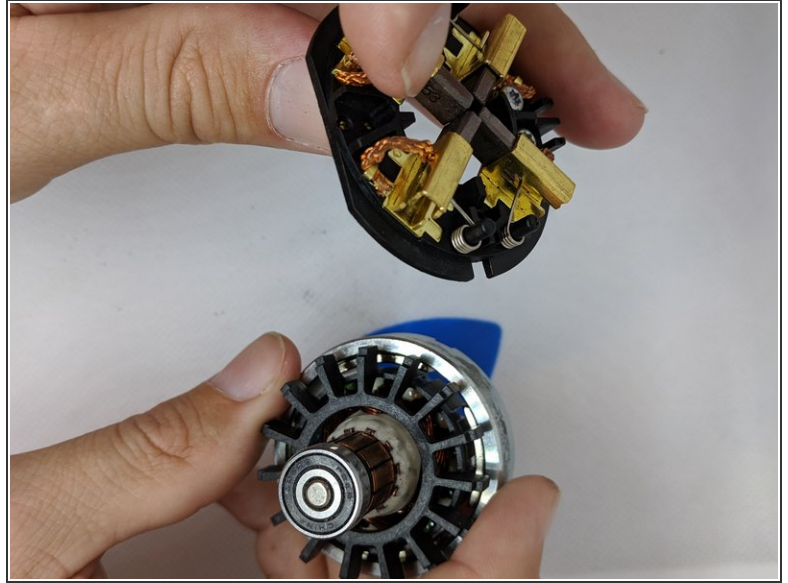
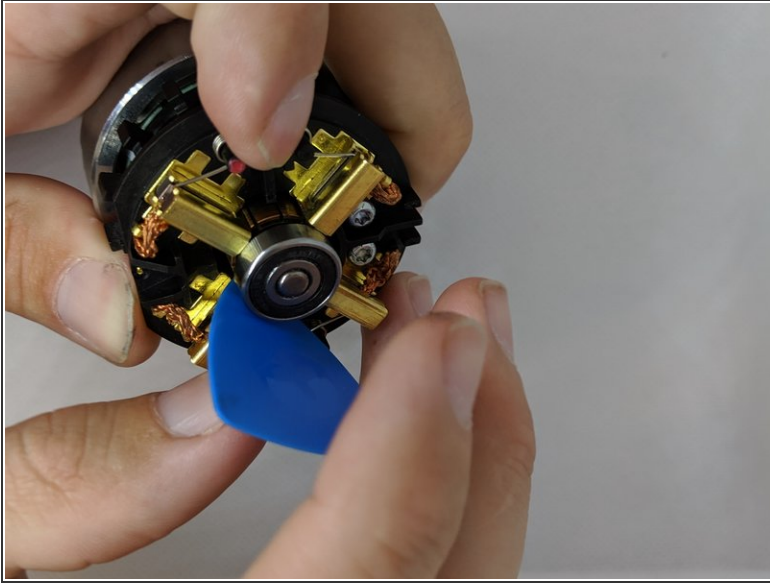
- Remove the gear case and electric motor assembly from the impact driver case by pulling up on it.


Step 5



- The gear case is easily separated from the electric motor by gently pulling the two pieces apart.

Step 6



- Insert the opening pick between one of the carbon brushes and the electric motor to help compress the spring.
 - While compressing the spring slide that section of the brush block assembly over the bearing.
 - The brush block assembly should easily slide over the bearing now , if it does not repeat the above process as needed for the other three carbon brushes.
-  When you remove the brush block assembly, the remaining component is the electric motor.

To reassemble your device, follow these instructions in reverse order.