

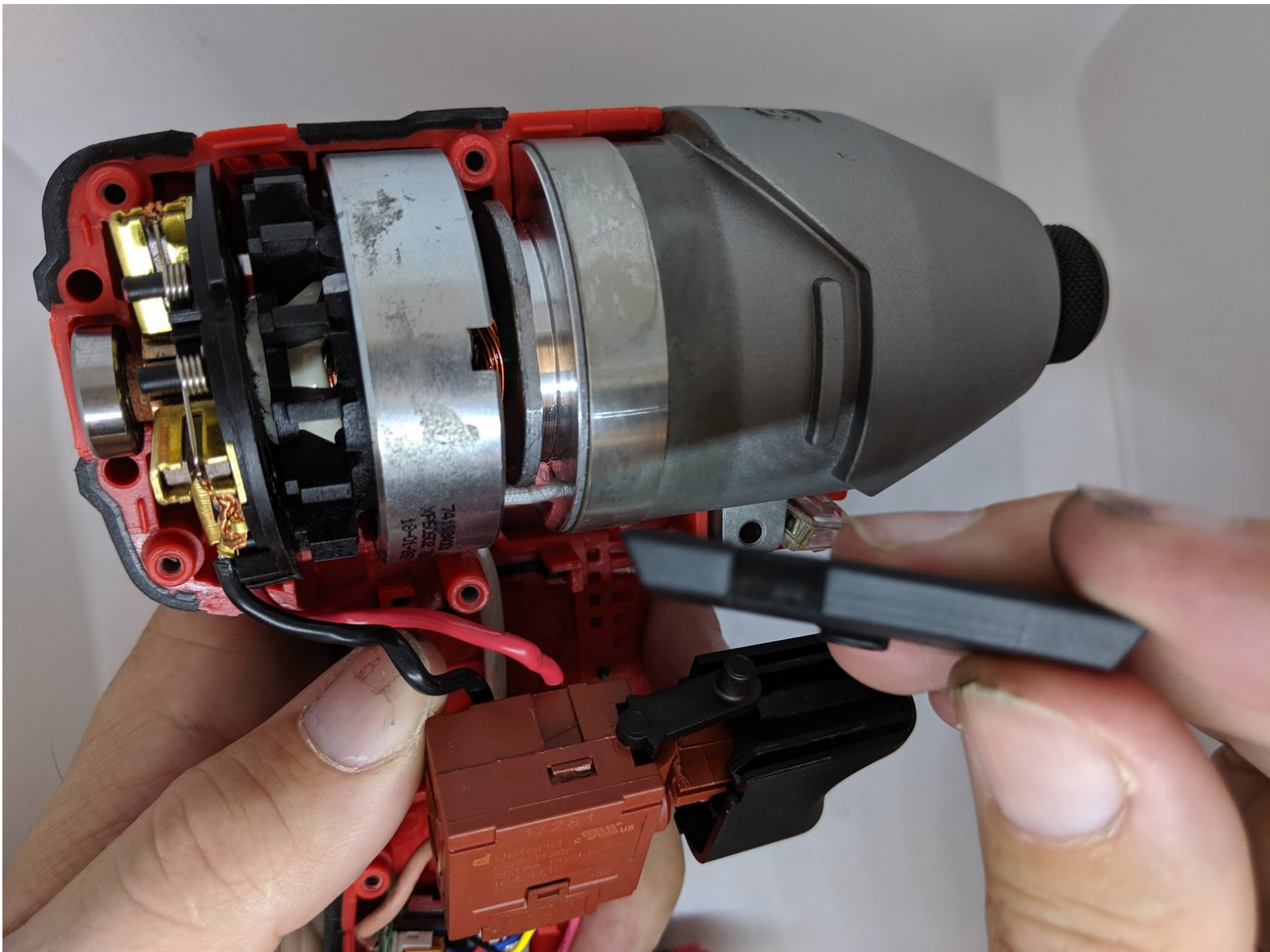


Milwaukee Hex Impact Driver 2656-20

Forward/Reverse switch Replacement

This guide will demonstrate how to remove the forward/reverse switch in your Milwaukee Hex Impact Driver 2656-20.

Written By: BRYCE DICKERSON



INTRODUCTION

This guide will demonstrate how to replace the forward/reverse switch on the Milwaukee Hex Impact Driver 2656-20. The First Two steps will cover disassembly of the drill. The only tool required for this repair is a T-10 Torx Screwdriver. The repair is considered moderate in difficulty and will take approximately 15 minuets.



TOOLS:

- [T10 Torx Screwdriver](#) (1)



PARTS:

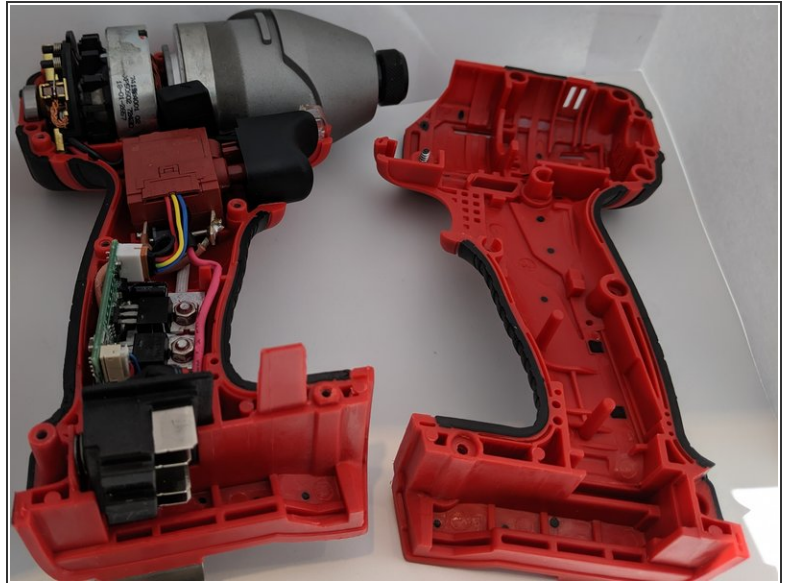
- [PN 45-24-2657 Forward/Reverse Shuttle](#) (1)

Step 1 — Battery



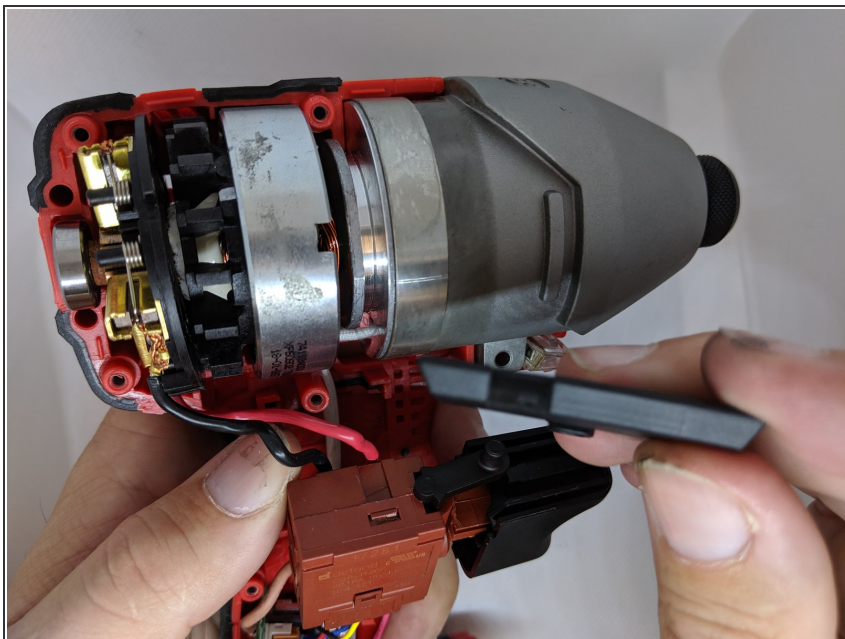
- Squeeze the red buttons on the battery.
- While squeezing the red buttons, slide the battery forward and out to remove it from the device.

Step 2 — Milwaukee Hex Impact Driver 2656-20 Case Disassembly



- Lay the impact driver on its side.
- Remove eight 16 mm and a single 19 mm screws using the T10 Torx Screwdriver.
- Separate the two halves by pulling up on the top half.
- ⓘ Make sure that the half with the screw heads is facing up during this process. This will ensure that the components do not fall out.
- Lay the top half to the side.

Step 3 — Forward/Reverse Switch



- Gently move the trigger assembly out of the way and remove the switch from the device.

To reassemble your device, follow these instructions in reverse order.