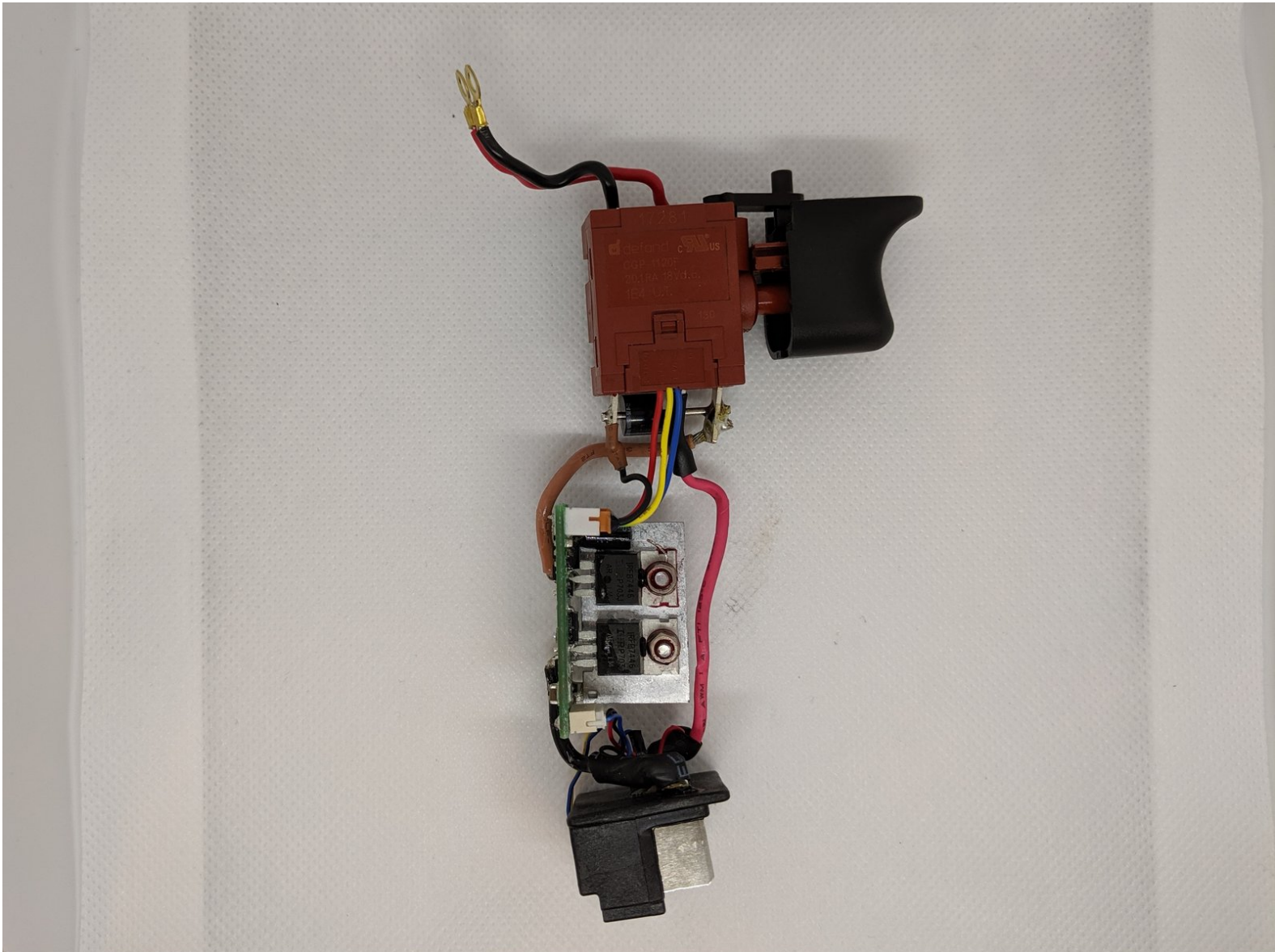




Milwaukee Hex Impact Driver 2656-20 Trigger Assembly Replacement

Use this guide to replace the trigger assembly in your Milwaukee Hex Impact Driver 2656-20.

Written By: Troy Conrad



INTRODUCTION

This guide will demonstrate how to replace the Trigger Assembly on the Milwaukee Hex Impact Driver 2656-20. The First Two steps will cover disassembly of the drill. The only tool required for this repair is a T-10 Torx Screwdriver. The repair is considered Difficult in difficulty and will take approximately 20 minuets.



TOOLS:

- [T10 Torx Screwdriver](#) (1)



PARTS:

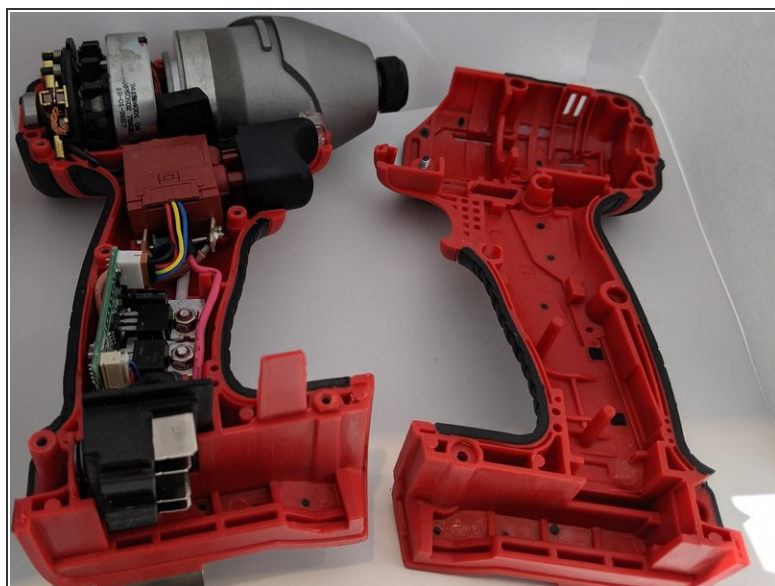
- [PN 23-66-2659 Electronics Assembly](#) (1)

Step 1 — Battery



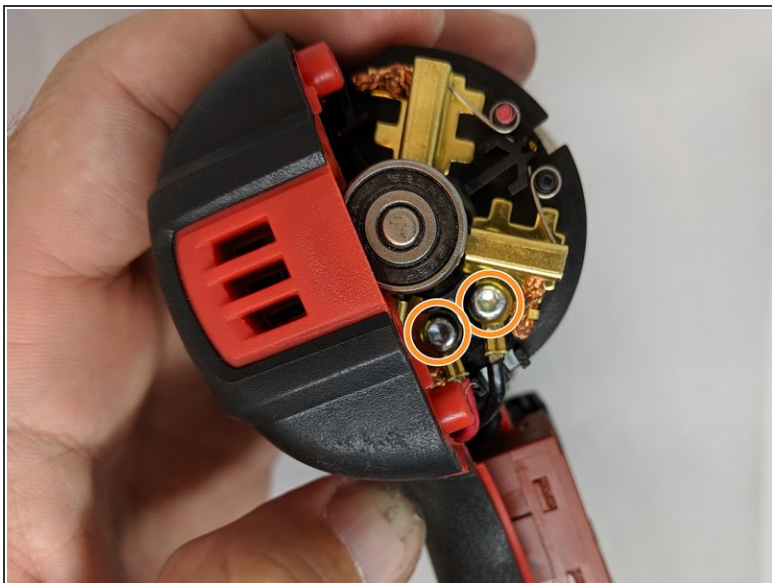
- Squeeze the red buttons on the battery.
- While squeezing the red buttons, slide the battery forward and out to remove it from the device.

Step 2 — Milwaukee Hex Impact Driver 2656-20 Case Disassembly



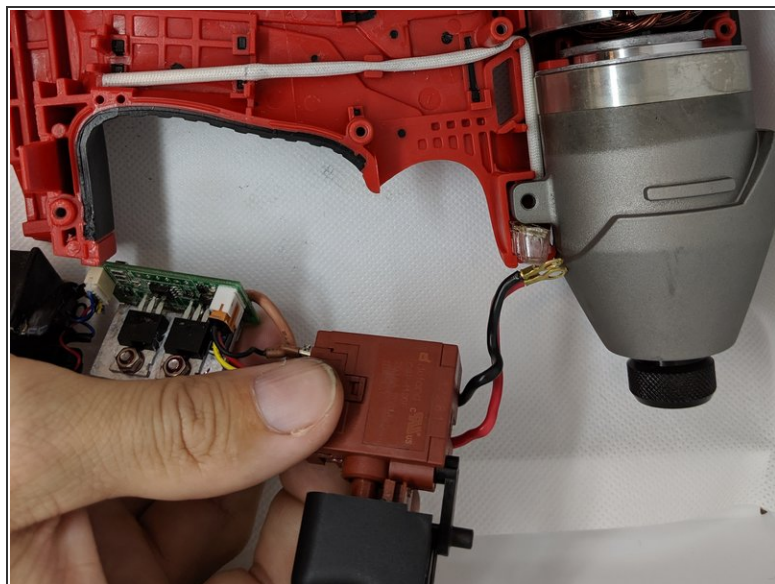
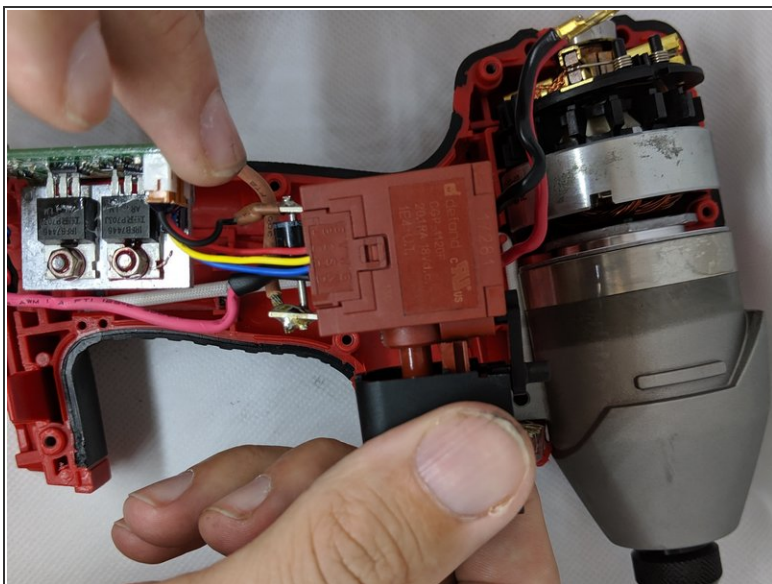
- Lay the impact driver on its side.
- Remove eight 16 mm and a single 19 mm screws using the T10 Torx Screwdriver.
- Separate the two halves by pulling up on the top half.
- ⓘ Make sure that the half with the screw heads is facing up during this process. This will ensure that the components do not fall out.
- Lay the top half to the side.

Step 3 — Trigger Assembly



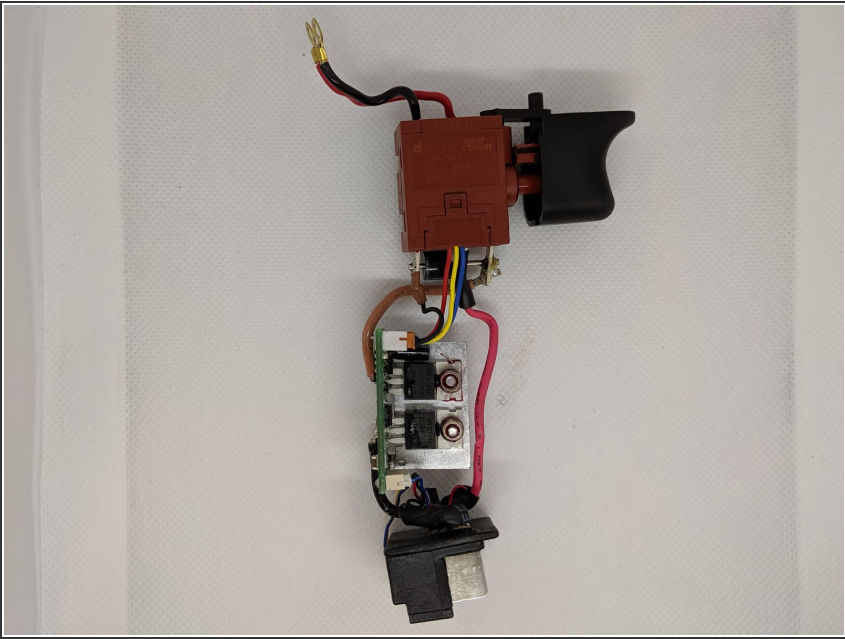
- Remove the two 6 mm screws on the back of the brush card assembly using the T10 Torx screwdriver.
- Move the two wires out of the way.

Step 4



- Gently pull up on the trigger assembly to remove it from the case.

Step 5



- Remove the trigger assembly from the device.

To reassemble your device, follow these instructions in reverse order.