

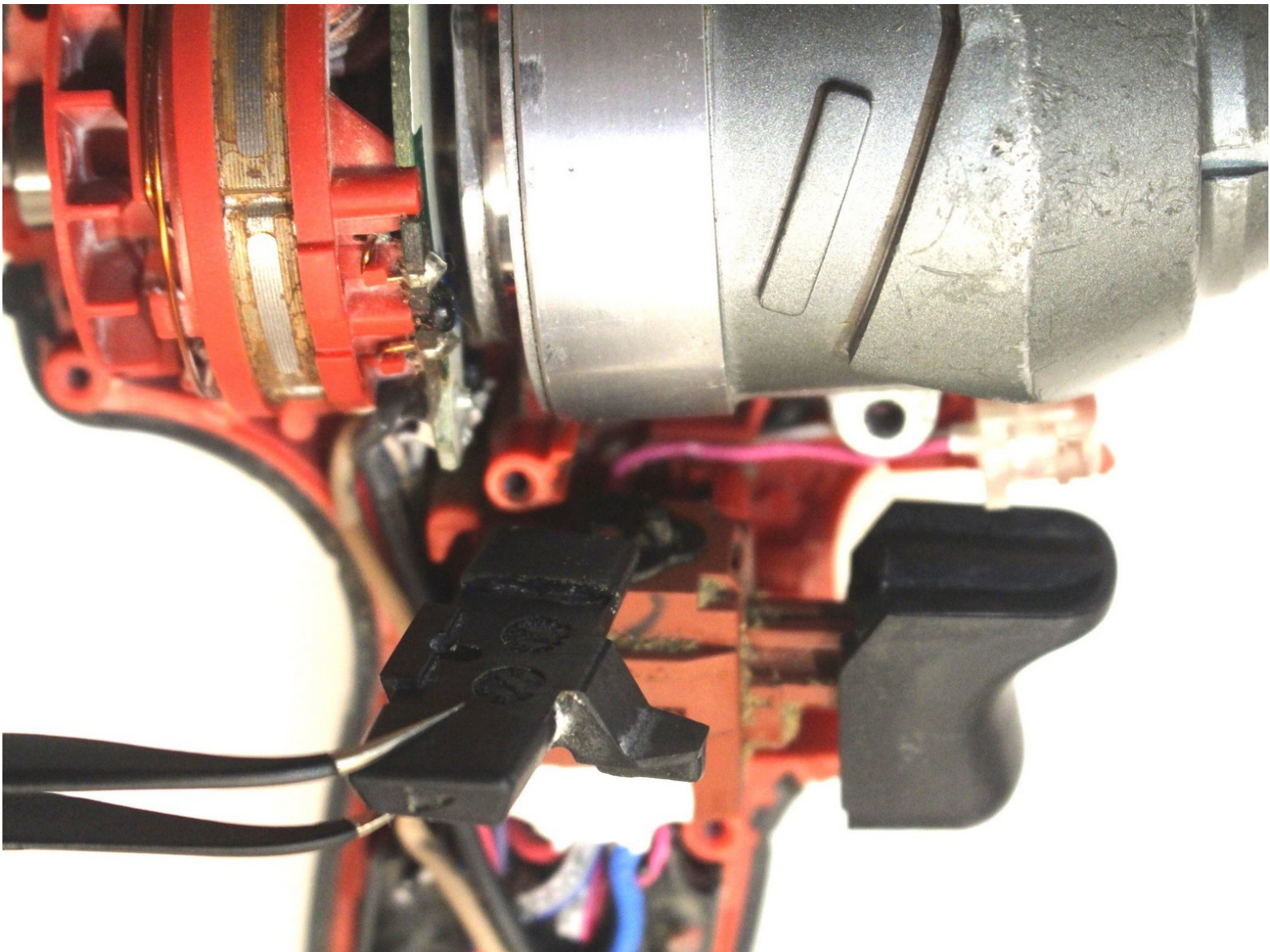


Milwaukee Hex Impact Driver 2750-20

Directional Switch Replacement

This informative guide explains how to replace the directional switch on a Milwaukee Hex Impact Driver 2750-20.

Written By: Charles Putnam



INTRODUCTION

The following repair guide shows how to remove and replace the directional switch in a Milwaukee Hex Impact Driver 2750-20.



TOOLS:

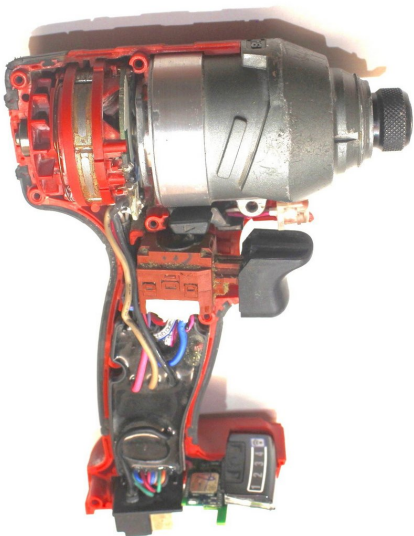
- [T9 Torx Screwdriver](#) (1)
 - [Spudger](#) (1)
 - [Tweezers](#) (1)
-

Step 1 — Outer Casing



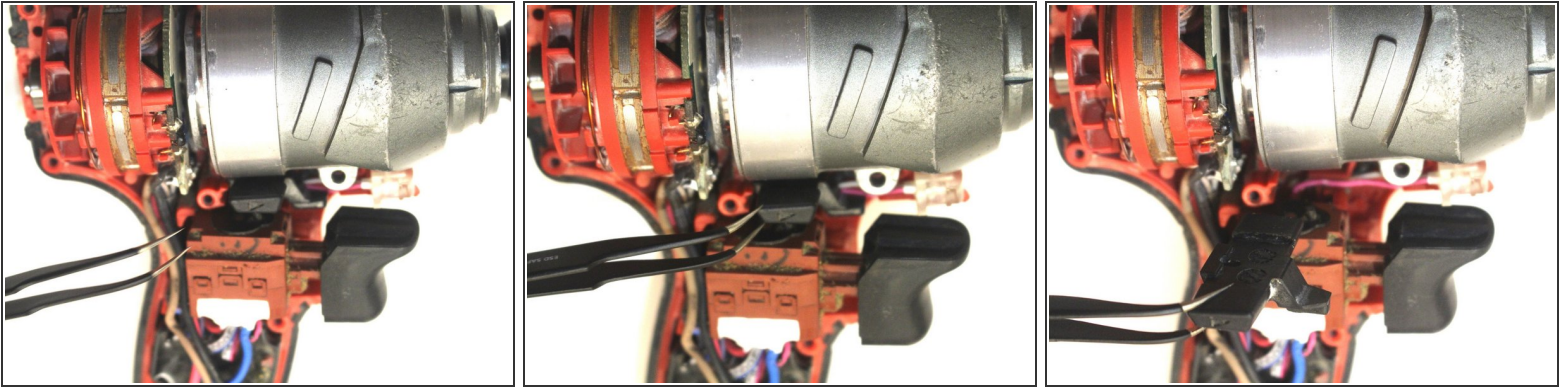
- Remove the five T9 15.5 mm screws.
- Remove the single T9 19.5mm screw.
- Remove the two T9 37mm screws.

Step 2



- Remove the drill casing to expose the drill's interior parts.

Step 3 — Directional Switch



- Remove the trigger assembly completely.
- Remove the directional switch by lifting upward using a pair of tweezers, clearing the alignment pole on the trigger assembly.
- ☑ Insert a new directional switch by aligning the hole on the switch with the pole on the trigger.

To reassemble your device, follow these instructions in reverse order.