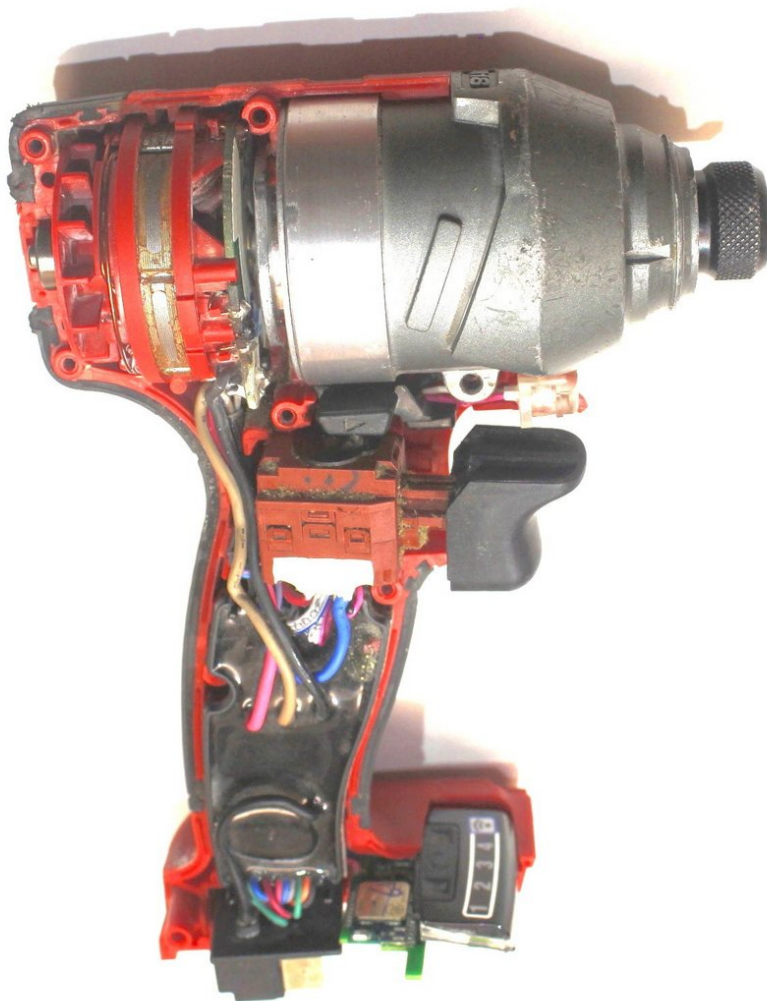




Milwaukee Hex Impact Driver 2750-20 Outer Casing Replacement

This guide will show you how to remove the outer casing on a Milwaukee Hex Impact Driver 2750-20.

Written By: Charles Putnam



INTRODUCTION

The Milwaukee Hex Impact Driver 2750-20 contains an outer casing that must be removed to change all interior parts. This is a prerequisite guide to removing the outer case to make repairs on the device. The following guide provides the necessary tools as well as steps to replacing the outer casing in an easy and efficient manner.



TOOLS:

- [Spudger](#) (1)
 - [T9 Torx Screwdriver](#) (1)
-

Step 1 — Outer Casing



- Remove the five T9 15.5 mm screws.
- Remove the single T9 19.5mm screw.
- Remove the two T9 37mm screws.

Step 2



- Remove the drill casing to expose the drill's interior parts.

To reassemble your device, follow these instructions in reverse order.