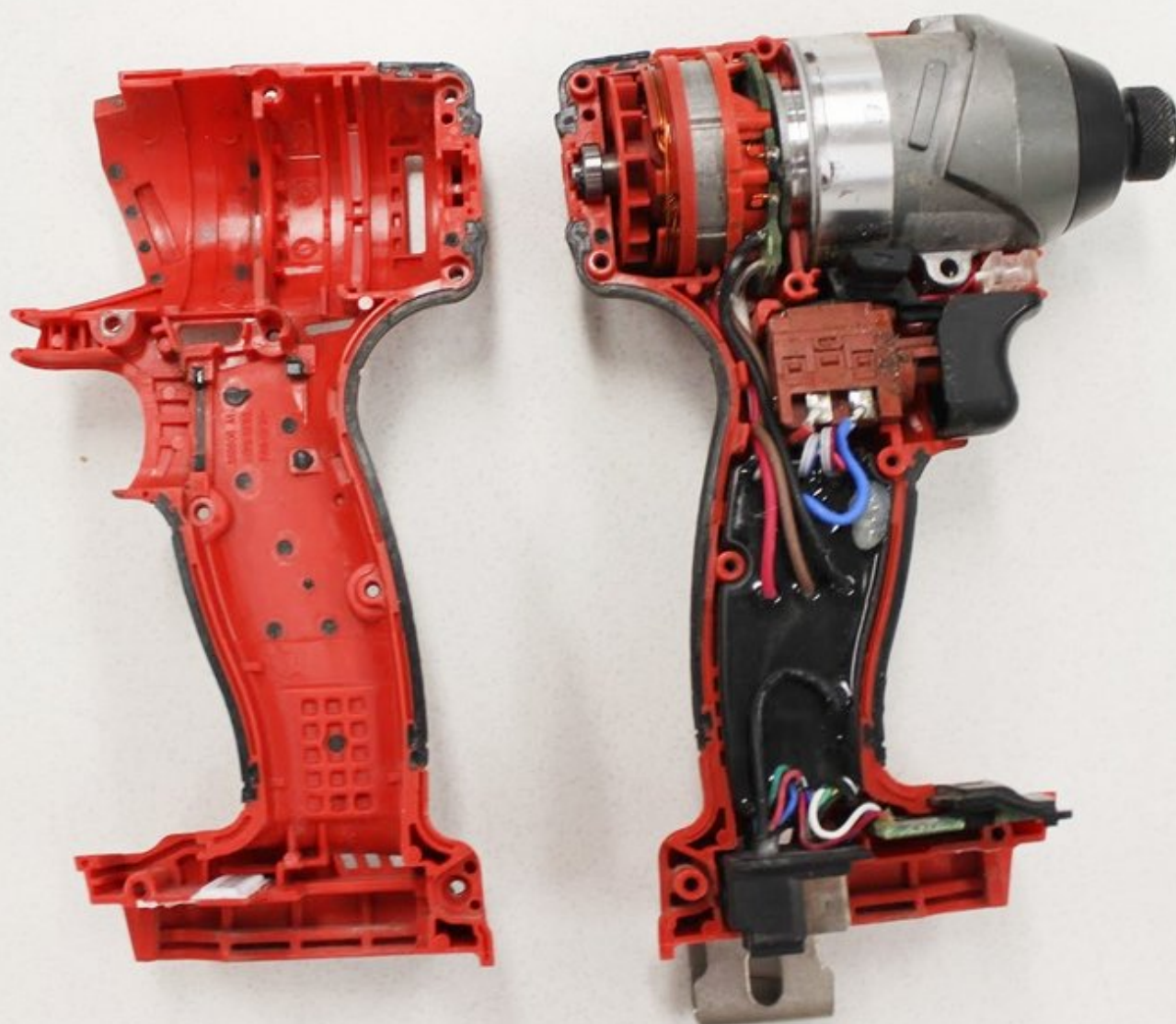




# Milwaukee Hex Impact Driver 2753-20 Cover Removal

This guide will explain how to remove the Chuck Cover for the Milwaukee Hex Impact Driver 2753-20.

Written By: Kaylee Rose



---

## INTRODUCTION

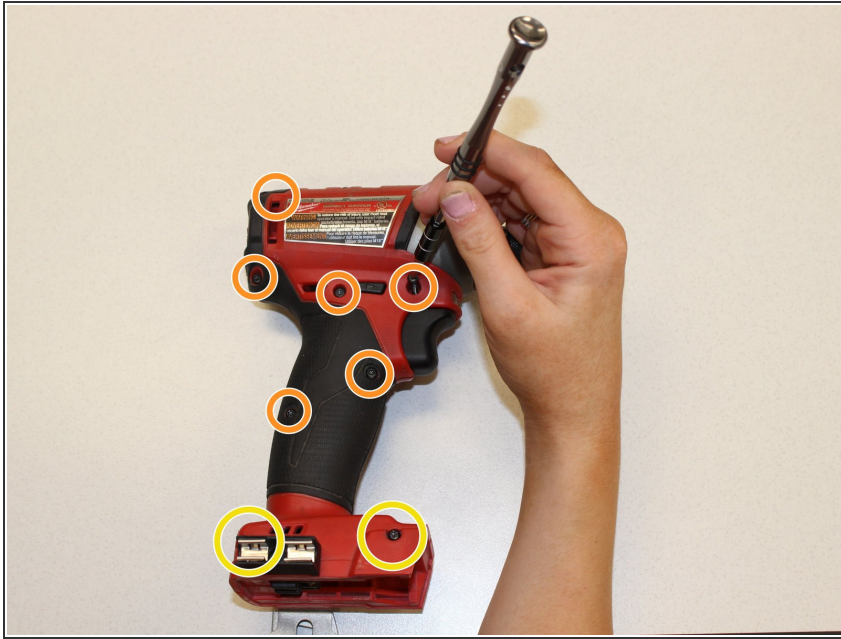
The cover of the Milwaukee Hex Impact Driver 2753-20 is easy to remove. It is secured by two M3 x 38mm Pan Hd. ST T-10 Tamproof screws (part number. 06-82-0013) and six M3 x 16mm Pan Hd. ST T-10 Tamproof screws (part number. 06-82-7236). A Torx T10 screwdriver is needed to complete this procedure. This guide will show you how to remove the cover in order to replace it or to access the components inside of the drill.

---

### TOOLS:

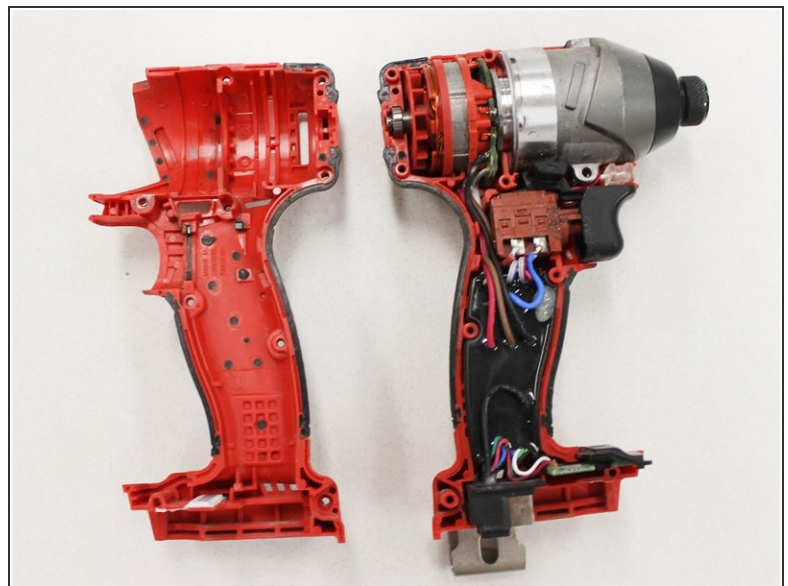
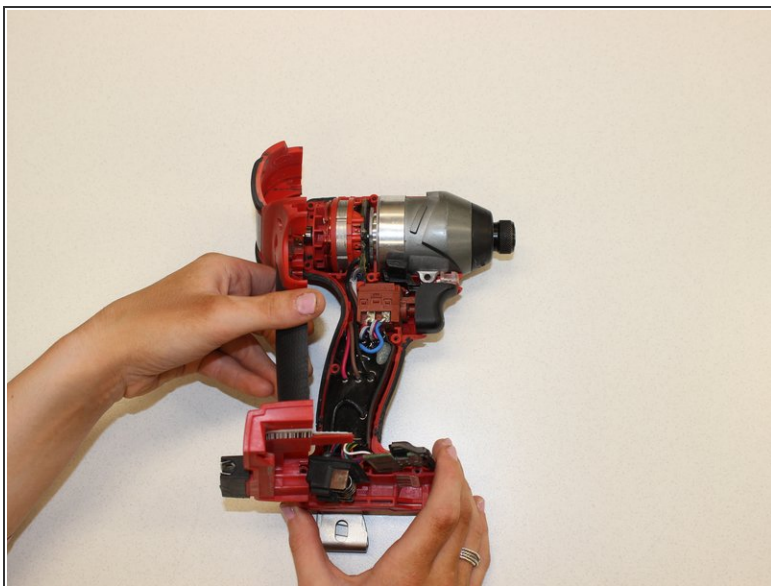
- [T10 Torx Screwdriver](#) (1)
-

## Step 1 — Milwaukee Hex Impact Driver 2753-20 Cover Removal



- Using the Torx T10 screwdriver, remove the six 17 mm screws on the outside of the handle.
- Remove the two 40 mm Torx T10 screws near the bottom of the cover.

## Step 2



- Carefully remove the cover.

***i* If there is buildup from sawdust or sediment it might be a little difficult take apart.**

To reassemble your device, follow these instructions in reverse order.