



Milwaukee Hex Impact Driver 2753-20 Gear Case Replacement

In this guide, the user will be able to follow a step by step process on how to remove the gear case from the opened drill.

Written By: Kaylee Rose



INTRODUCTION

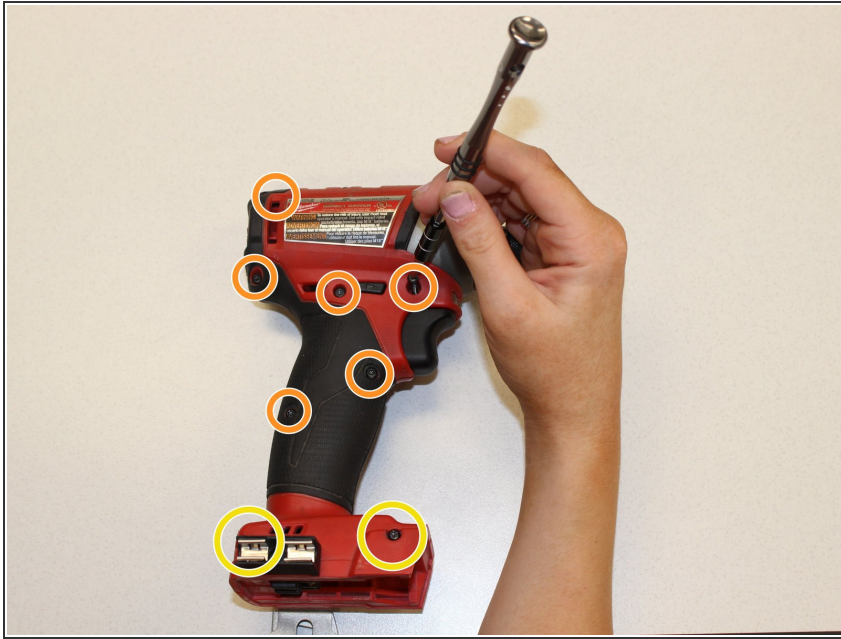
In this guide, you will be removing the gear case completely from the drill. Before beginning, make sure that the area you are working in is dry, as well as your hands, because you will be exposed to the inner components of the drill. Secondly, remove the gear case with caution, being careful not to harm any of the surrounding wires. Damage to any of these wires could potentially damage the drill permanently. This procedure will take approximately 15 minutes and only requires basic tools.



TOOLS:

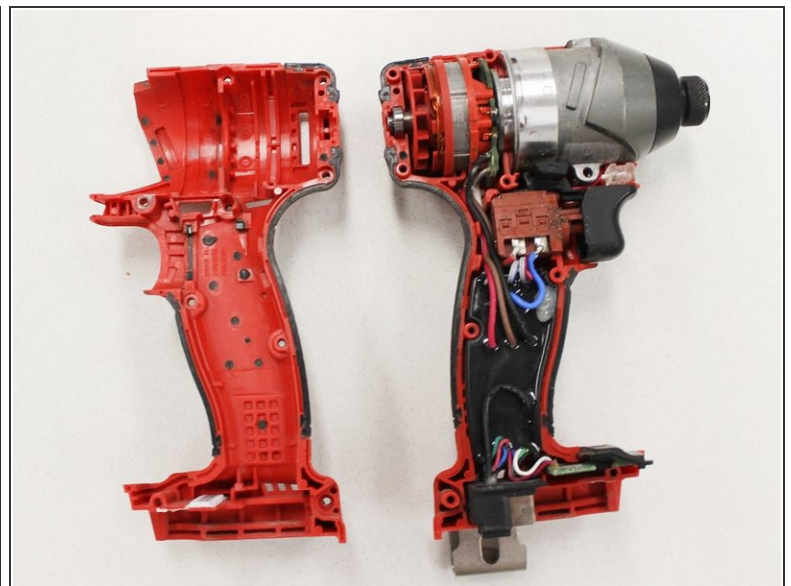
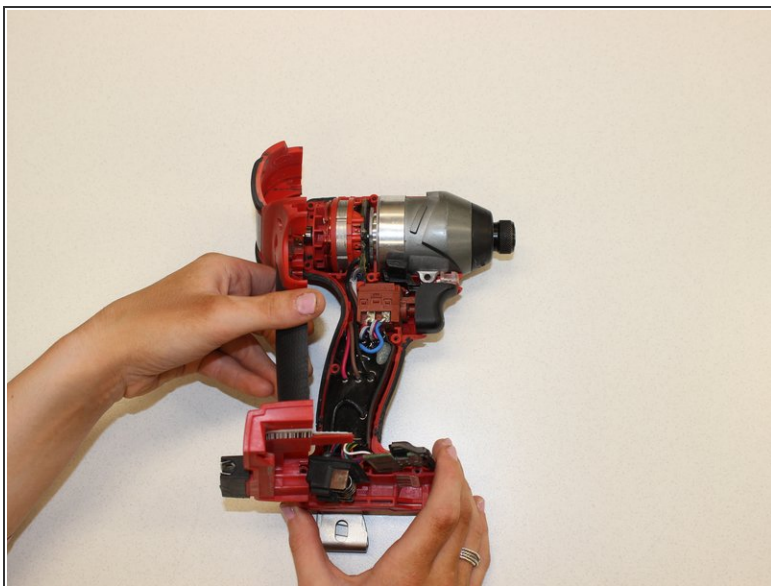
- [T10 Torx Screwdriver](#) (1)
-

Step 1 — Milwaukee Hex Impact Driver 2753-20 Cover Removal



- Using the Torx T10 screwdriver, remove the six 17 mm screws on the outside of the handle.
- Remove the two 40 mm Torx T10 screws near the bottom of the cover.

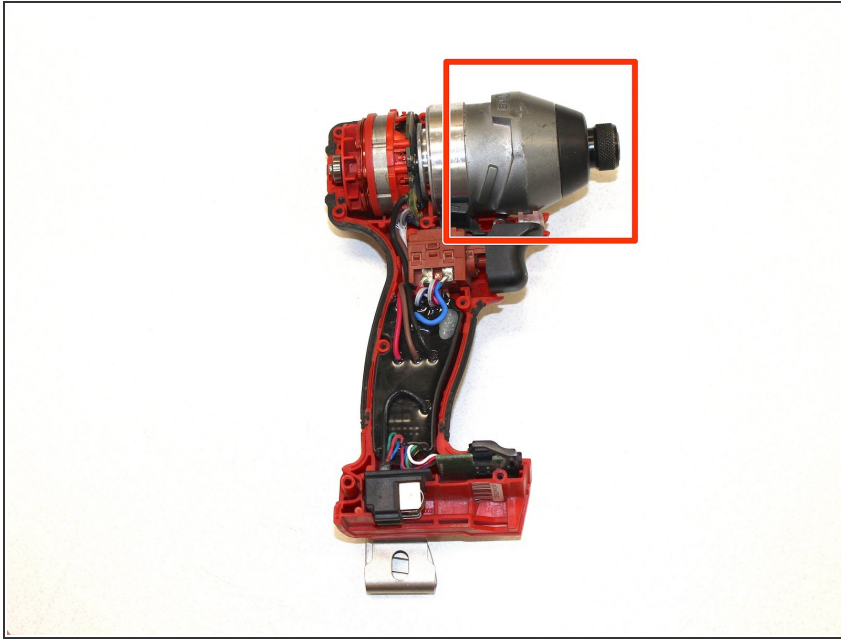
Step 2



- Carefully remove the cover.

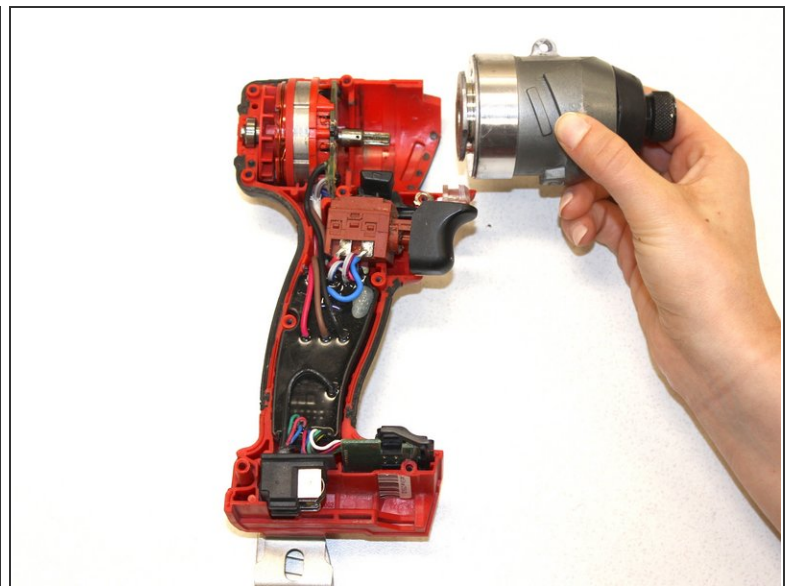
***i* If there is buildup from sawdust or sediment it might be a little difficult take apart.**

Step 3 — Gear Case



- Set the cover aside so the drill body is visible and can be accessed.
- The gear case is the silver cylinder part with a black tip in the top of the drill.

Step 4



- Grip the gear case in one hand while holding the body of the drill with the other.
 - Pull outward to remove.
- ⚠ Remove carefully, being mindful of the connecting wires. Damage to these wires can cause permanent damage to the drill.

Step 5



- Check the connection from the motor to the trigger.
- Check that the connection to the circuit board is intact.
- If both connections are intact, the gears inside the gear case assembly may be jammed and need to be replaced.

Step 6



- A replacement part can be found on the Milwaukee Tool Website under Part NO. 14-30-D012.

To reassemble your device, follow these instructions in reverse order.