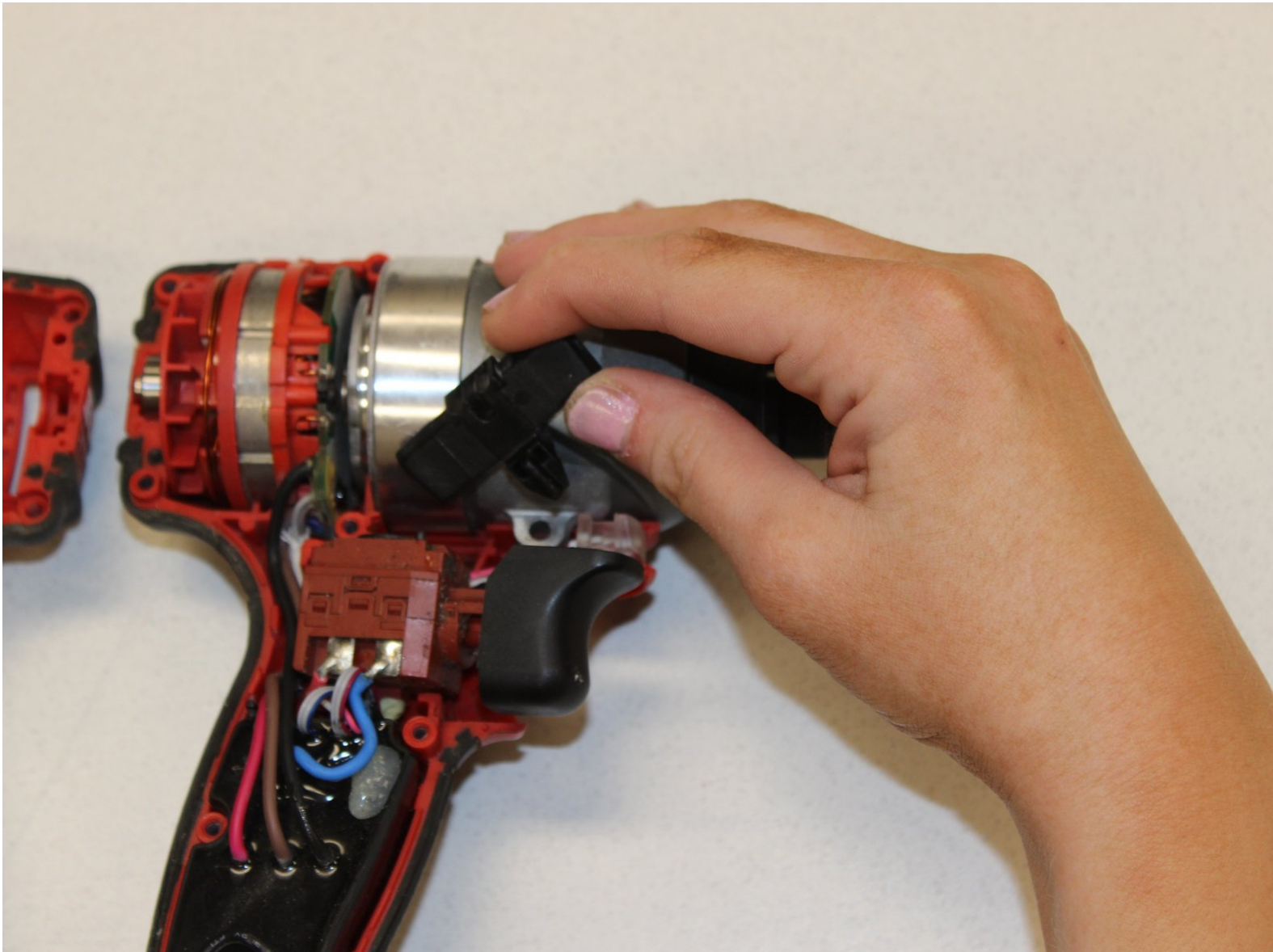




Milwaukee Hex Impact Driver 2753-20 Reverse Button Replacement

Use this guide to help you replace the reverse button in your Milwaukee Hex Impact Driver 2753-20.

Written By: Alex Larson



INTRODUCTION

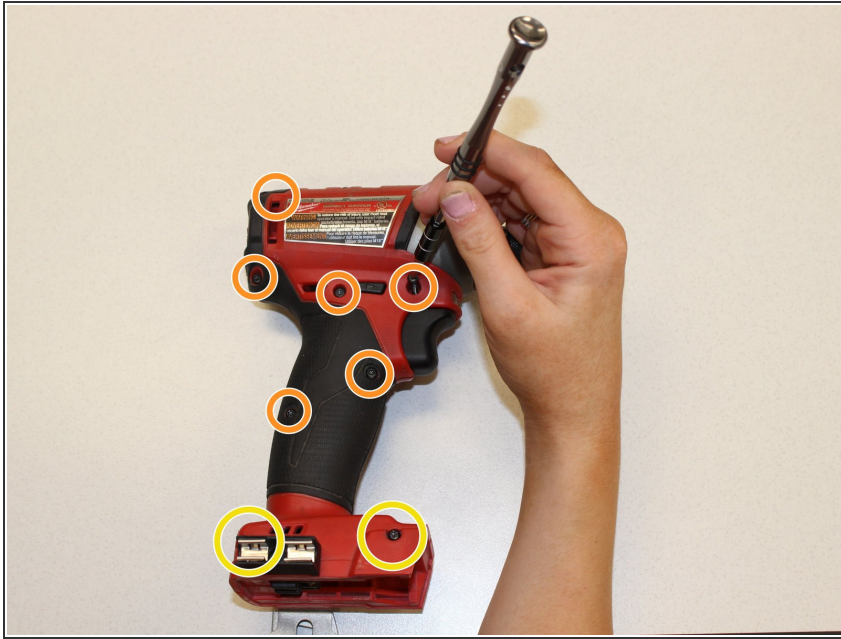
Use this guide to help you replace the reverse button in your Milwaukee Hex Impact Driver 2753-20. If your reverse button is either stuck or unresponsive, it likely needs to be replaced. This guide will show you where to locate the switch and how to safely remove it.



TOOLS:

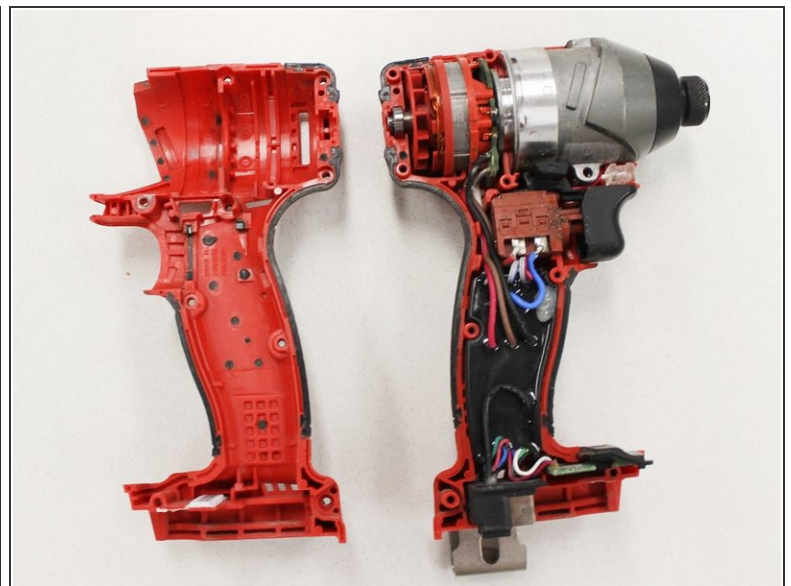
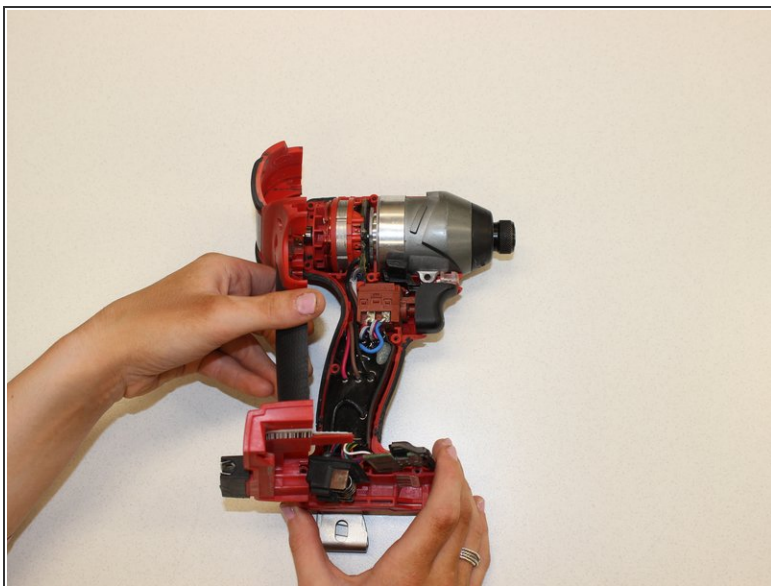
- [T10 Torx Screwdriver](#) (1)
-

Step 1 — Milwaukee Hex Impact Driver 2753-20 Cover Removal



- Using the Torx T10 screwdriver, remove the six 17 mm screws on the outside of the handle.
- Remove the two 40 mm Torx T10 screws near the bottom of the cover.

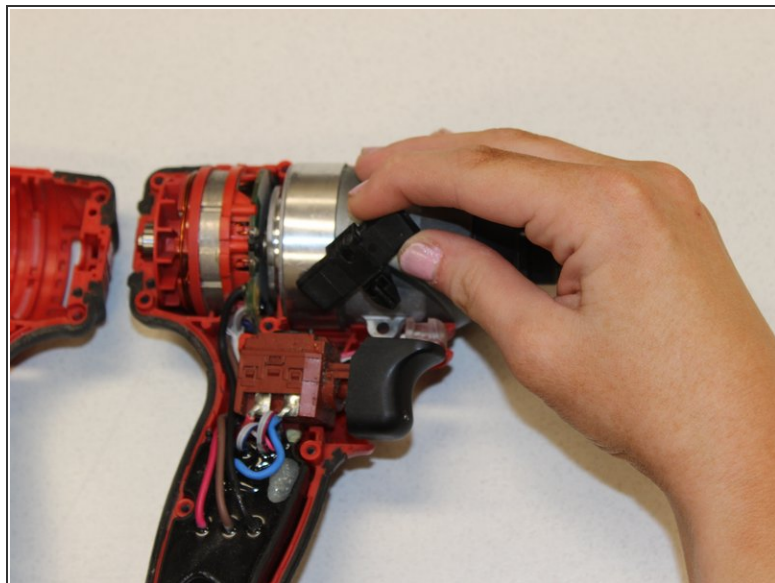
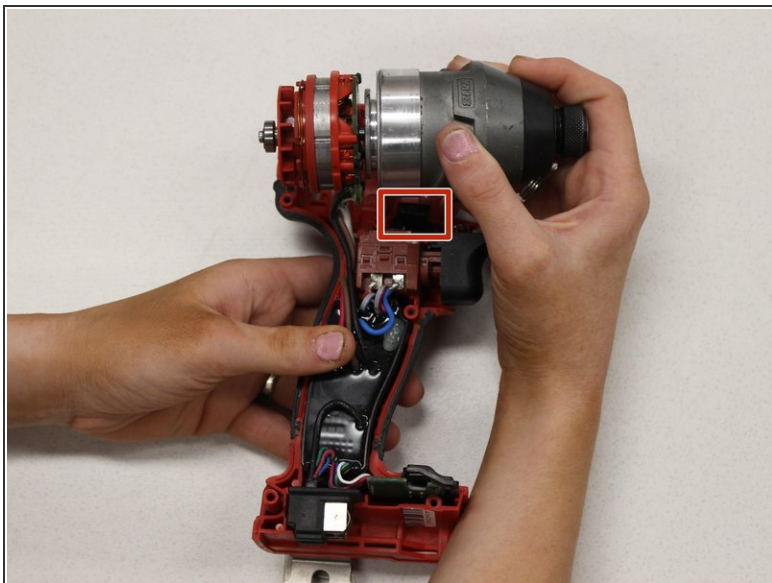
Step 2



- Carefully remove the cover.

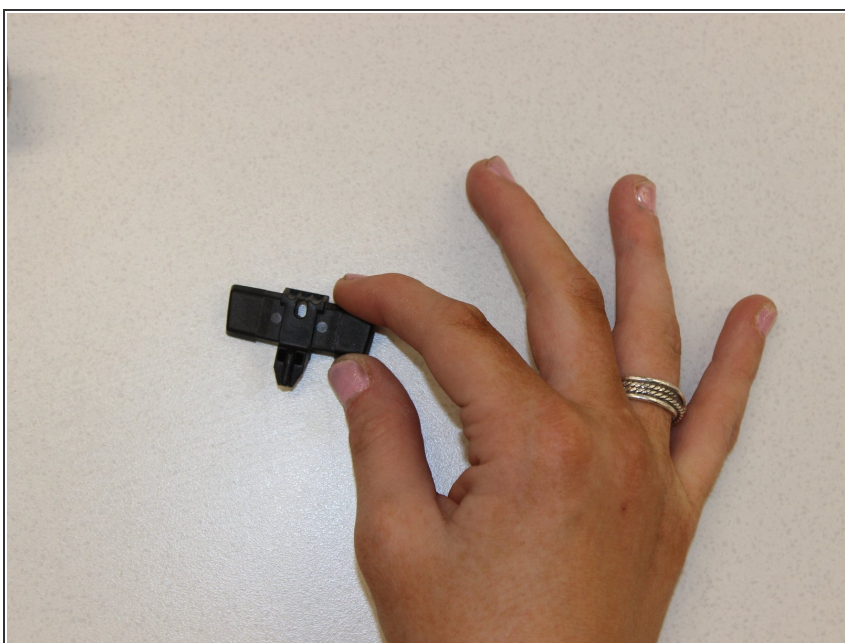
***i* If there is buildup from sawdust or sediment it might be a little difficult take apart.**

Step 3 — Reverse Button



- Locate the black forward/reverse button underneath the chuck.
- Pull the button gently towards you to remove it from the trigger assembly.

Step 4



- Using replacement part NO. 45-24-D013 (forward/reverse shuttle), follow the steps of this guide in reverse order.

To reassemble your device, follow these instructions in reverse order.