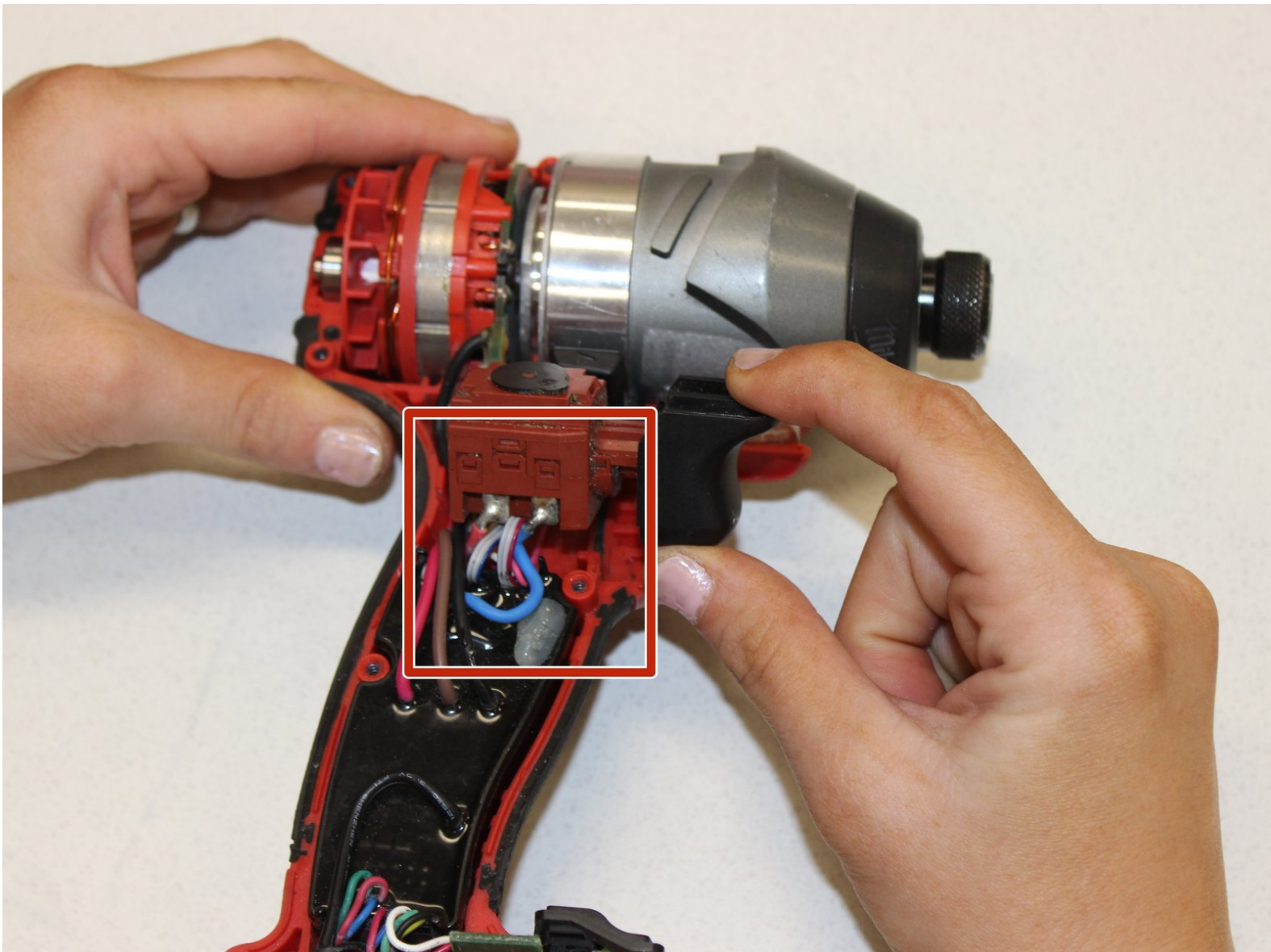




# Milwaukee Hex Impact Driver 2753-20 Trigger Replacement

This guide will show you how to replace the trigger assembly in your drill. It includes the trigger button and the attached circuitry.

Written By: Alex Larson



## INTRODUCTION

The removal of the trigger is relatively challenging. It is the central part of the tool and has some wiring attached. Practice extreme caution and make sure the battery is removed.



### TOOLS:

- [T10 Torx Screwdriver](#) (1)
- [Soldering Iron](#) (1)



### PARTS:

- [M18 REDLITHIUM XC 4.0 Extended Capacity Battery Pack](#) (1)

## Step 1 — Battery



- While pinching the red locking buttons, pull the battery away from the front of the drill until the battery is fully removed.

**i** The battery is missing from this device so its removal is being mimed.

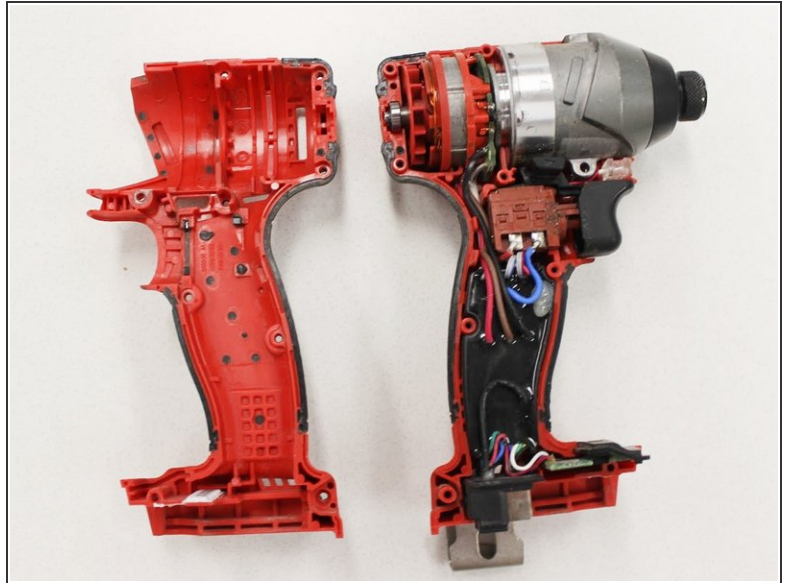
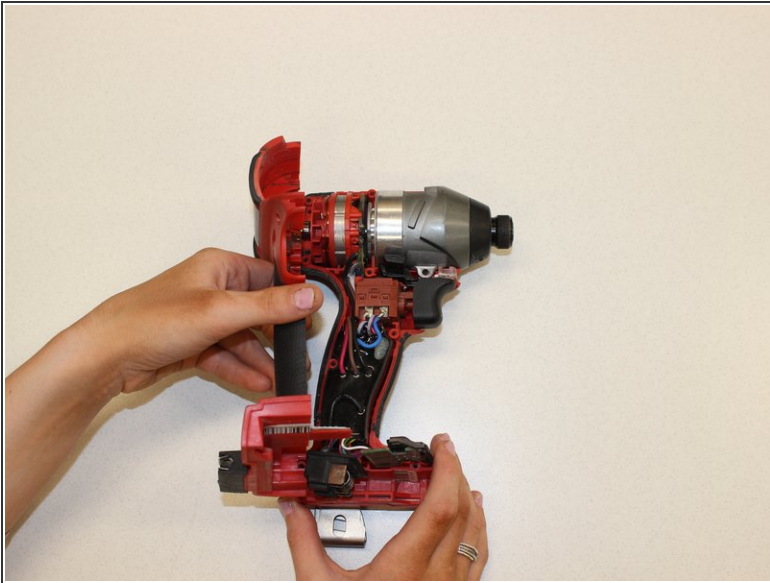
## Step 2 — Milwaukee Hex Impact Driver 2753-20 Cover Removal



- Using the Torx T10 screwdriver, remove the six 17 mm screws on the outside of the handle.
- Remove the two 40 mm Torx T10 screws near the bottom of the cover.

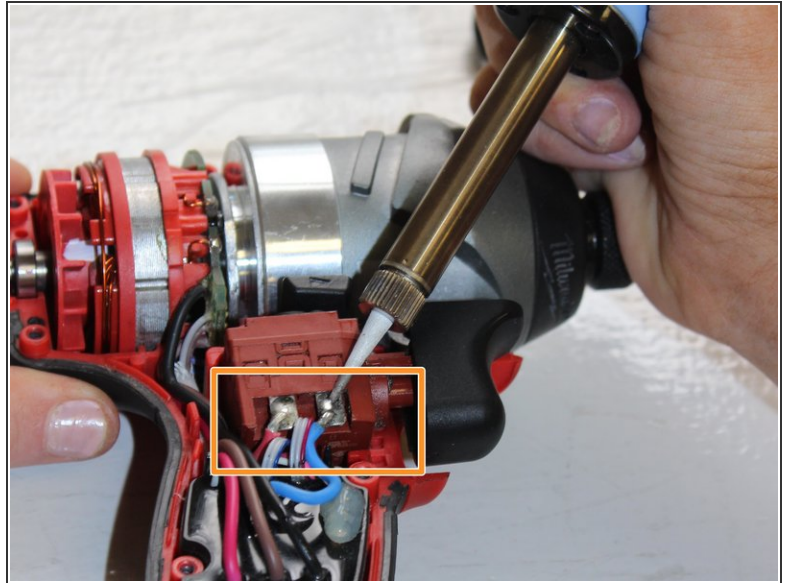
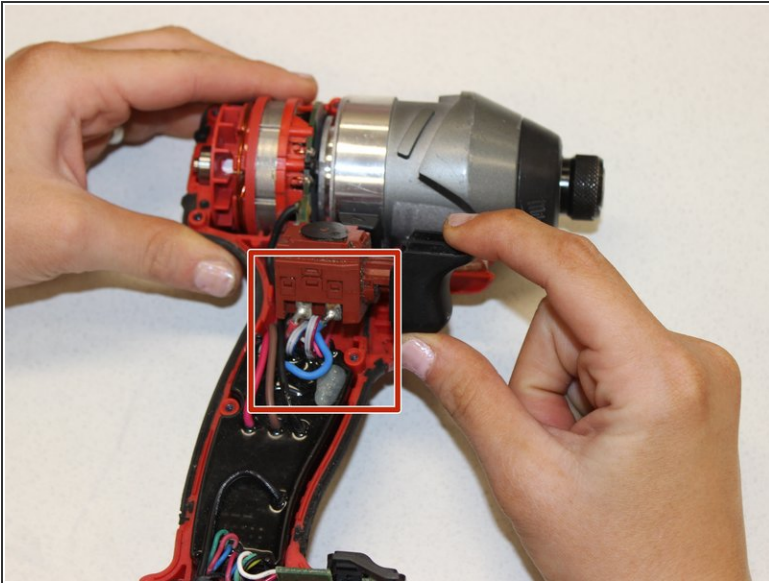


## Step 3



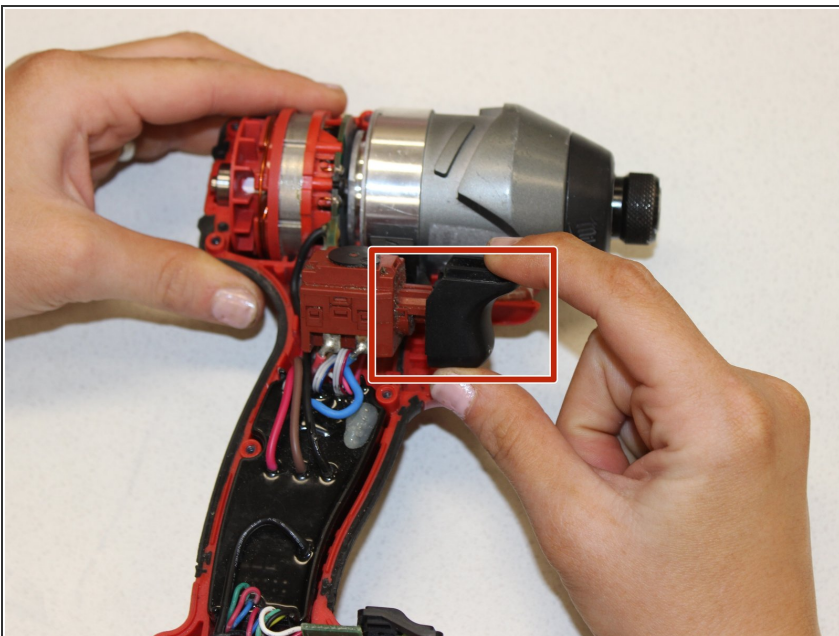
- Carefully remove the cover.
- ⓘ If there is buildup from sawdust or sediment it might be a little difficult take apart.

## Step 4 — Trigger



- Lift the trigger assembly from the device. It is connected to the circuit board by wires.
- Carefully desolder the wires off of the trigger assembly using a soldering iron on medium heat.
- ⓘ Refer to [this guide](#) for proper desoldering technique.

## Step 5



- Remove the trigger assembly from the device.
- ☑ Replace old trigger assembly with replacement part no. 14-20-0013.

To reassemble your device, follow these instructions in reverse order.