



# Milwaukee Impact Wrench 9070-20

## Forward/Reverse Switch

This guide shows the replacement of the forward/reverse switch assembly of your Milwaukee Impact Wrench 9070-20.

Written By: Brandon Schneiberg



## INTRODUCTION

The forward/reverse switch is one of the most sensitive part of this device. Owners of this device have mentioned that the switch is prone to fail due to overuse. Though replacement is not very hard, be cautious of the wires around it.

If the forward/reverse switch is not working or fails to function, use this guide to replace it in your device.



### TOOLS:

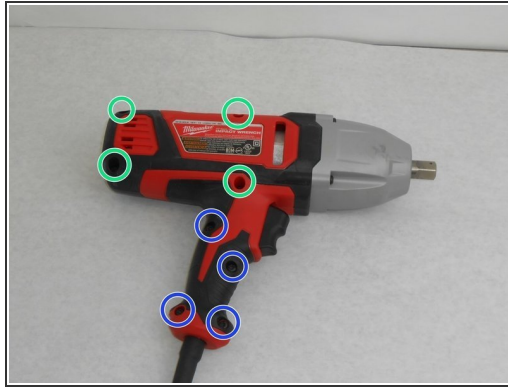
- [T20 Torx Screwdriver](#) (1)
- [iFixit Opening Tools](#) (1)



### PARTS:

- [Milwaukee 23-66-1306 Switch Assembly](#) (1)

## Step 1 — Forward/Reverse Switch



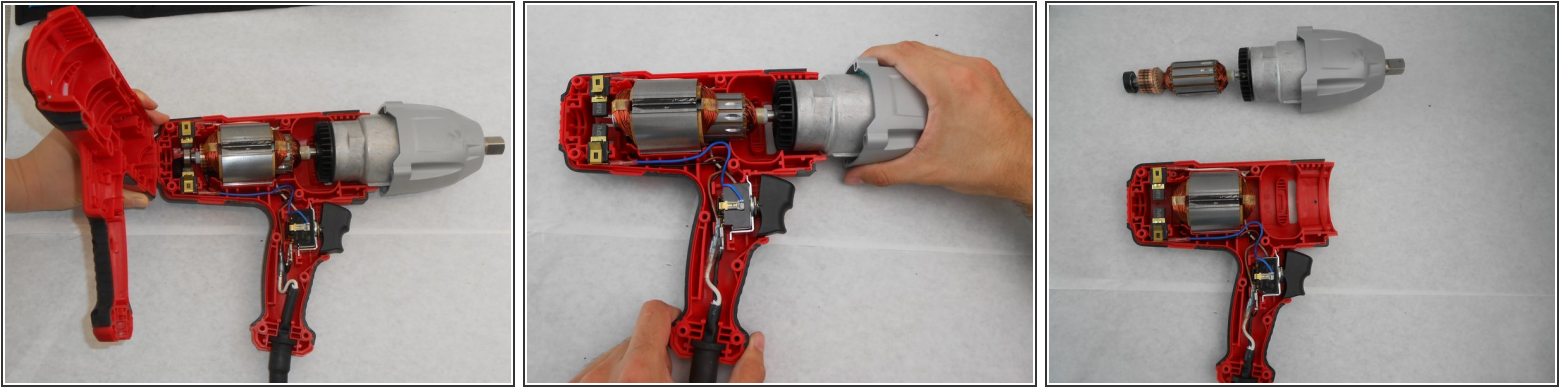
- ⚠ Ensure that the device is unplugged from any power source to avoid electrical shock.
- Flip the device and remove four 18mm screws using screws using a T20 Torx screwdriver.
- Remove four 14mm screws using a T20 Torx screwdriver.

## Step 2



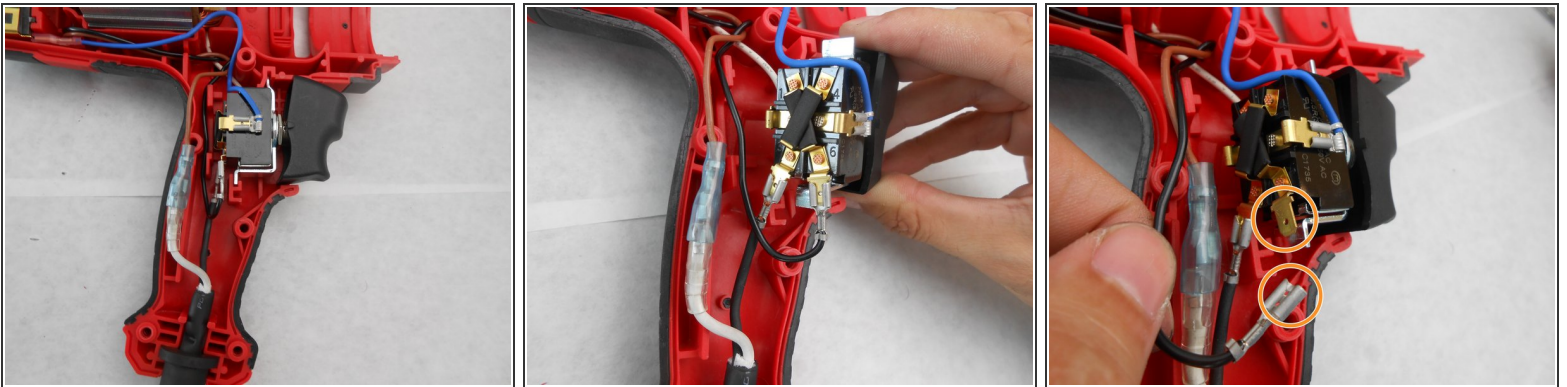
- Remove the four screws on each corner of the gear box assembly using a T20 Torx screwdriver.
- Use a plastic pry bar slide out the gear box assembly away from the main body.

### Step 3



- Separate the top half of the clam shell from the tool.
  - Remove the gearbox assembly by sliding it forward.
- ⚠ Abrupt pulling may damage the motor brushes. Please remove it with caution.
- ⓘ The bushes may need to be compressed for easier removal of the motor.

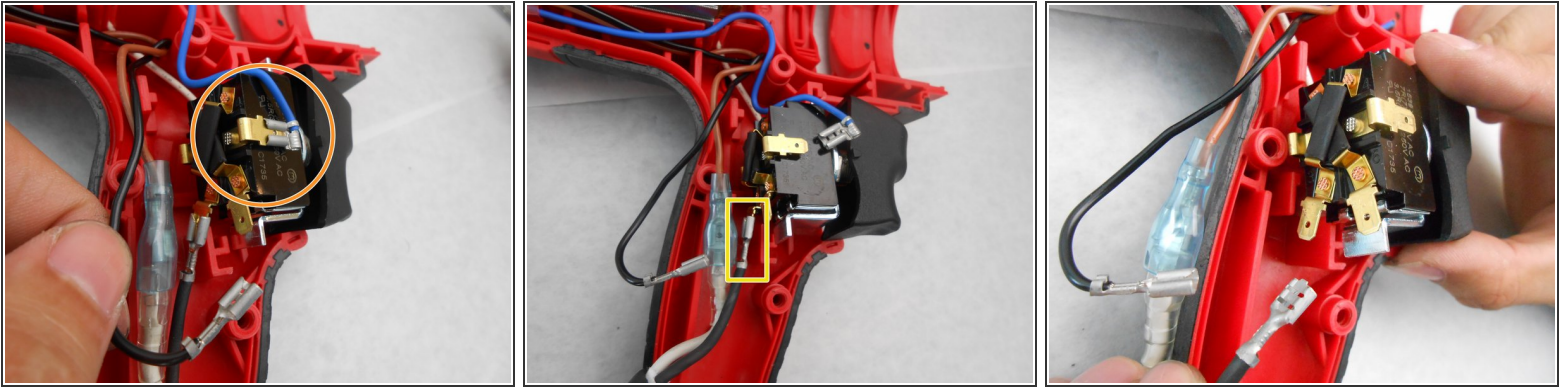
### Step 4



- Pull up on the switch to remove it from the plastic mount.
- ⓘ There are six wires connected to the back of the switch.
- Remove the black field wire winding from the switch.

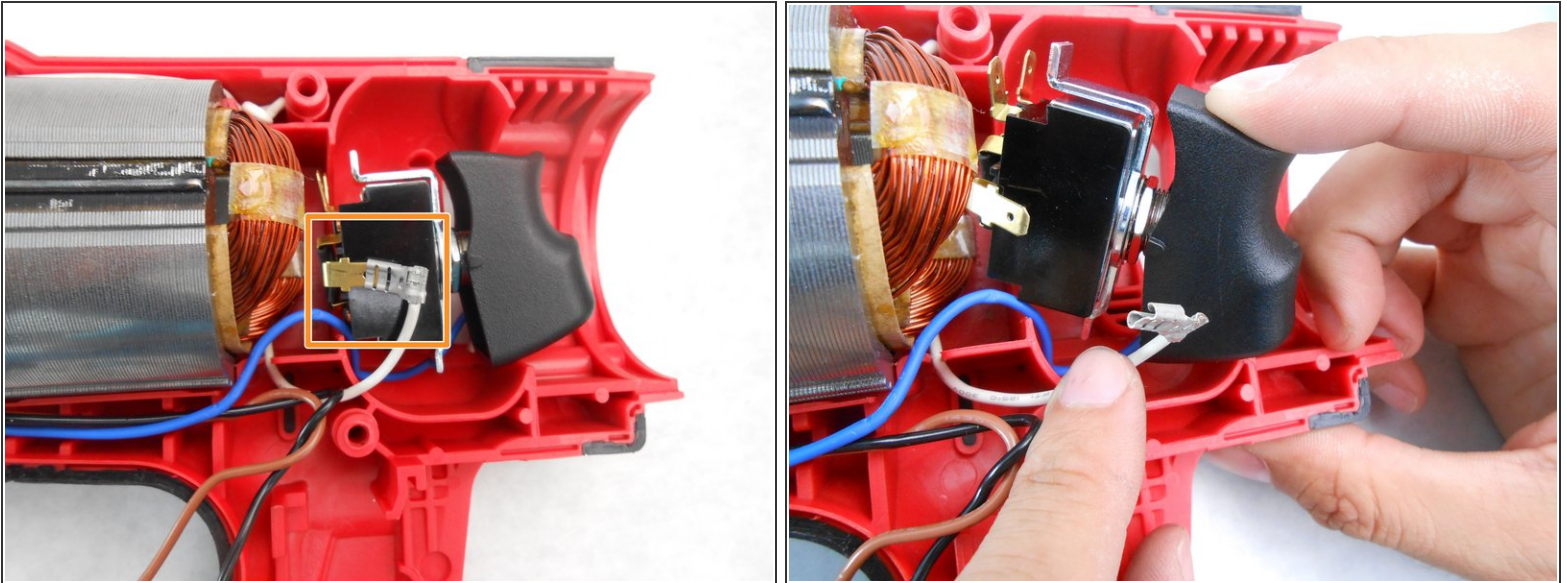


## Step 5



- Remove the blue lower brush wire (top right) from the connector.
- Remove the black AC power wire from the switch.
- ⓘ The wires do not need to be removed in order, but doing so helps to minimize confusion.

## Step 6



- Flip the switch vertically.
  - Remove the white upper brush wire from the connector.
  - Reconnect all wires and replace the new switch back into the plastic case mount.
- ⚠ Ensure that all wires are clear of the case so that they will not be damaged on reassembly.

To reassemble your device, follow these instructions in reverse order.