



Milwaukee Impact Wrench 9070-20 Motor Brushes Replacement

This guide will provide information on how to replace motor brushes in your Milwaukee Impact Wrench 9070-20.

Written By: Yuna Choi



INTRODUCTION

Keeping clean motor brushes is a vital way to ensure the device is working well. If you are hearing a rough sound when using the device, it might be a time to replace the motor brushes. If the brushes are too worn the tool may not function at all.

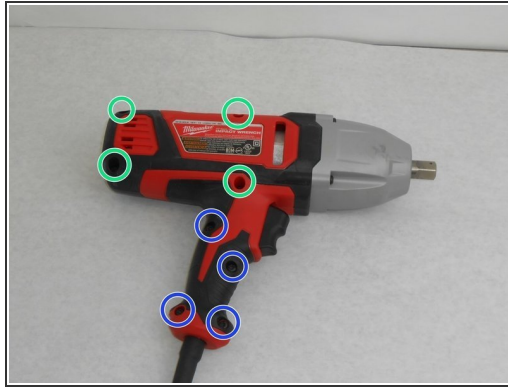
If the motor brushes are dirty or are in need of replacement, use this guide to replace the motor brush in your device.




TOOLS:

- [T20 Torx Screwdriver](#) (1)
 - [iFixit Opening Tools](#) (1)
-

Step 1 — Motor Brushes



 Ensure that the device is unplugged from any power source to avoid electrical shock.

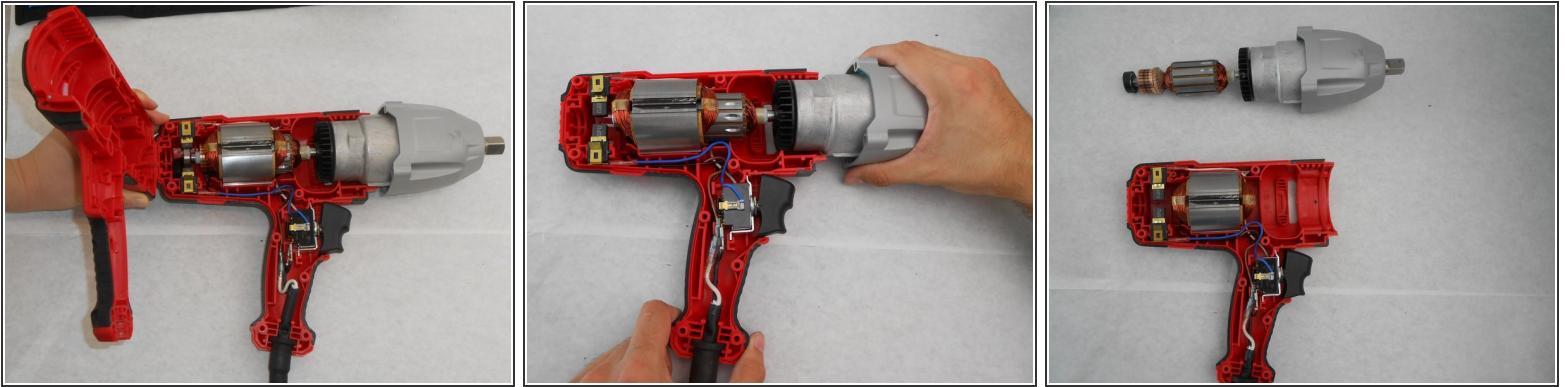
- Flip the device and remove (6) 5 x 18mm screws with a T-20 screwdriver.
- Remove (4) 5 x 14mm screws. with T-20 screwdriver.

Step 2



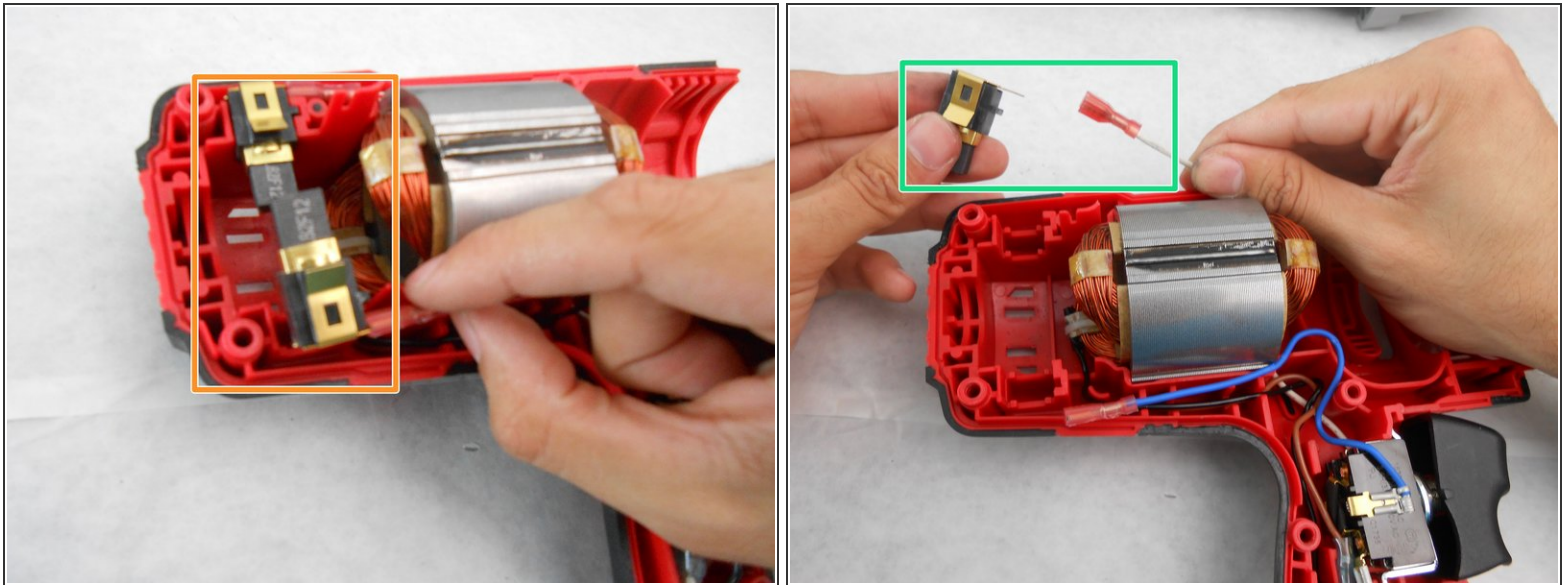
- Hold the device so the gray gearbox assembly faces directly towards you.
- Remove the four screws with a T-20 screwdriver.
- After removing all screws, use a small plastic opening tool to slide the gearbox assembly forward.

Step 3



- Gently remove the upper clam shell.
 - Slide the motor and gearbox assembly out the front of the device and set it aside.
- ⚠ Abrupt pulling may damage the motor brushes. Please remove it with caution.
- ⓘ The brushes may need to be compressed in order for the motor to be removed.

Step 4



- Remove the brushes from the mount by pulling the brush body directly upward.
 - Disconnect the blue wire from the lower brush.
 - Disconnect the white wire from the upper brush.
 - Reconnect the wires to the new brush and replace them back into the mount.
- ⚠ The brushes may need to be compressed in order to slide the motor back into position.

To reassemble your device, follow these instructions in reverse order.