



Milwaukee Impact Wrench 9070-20 Motor Field Winding Replacement

This guide will provide instructions on how to replace the motor field winding in your Milwaukee Impact Wrench 9070-20.

Written By: Brandon Schneiberg



INTRODUCTION

If the motor on the tool spins slowly or not at all the motor field winding may need replacement. To ensure that the field winding is problem first ensure that the device is receiving power and that the brushes are in good condition.



TOOLS:

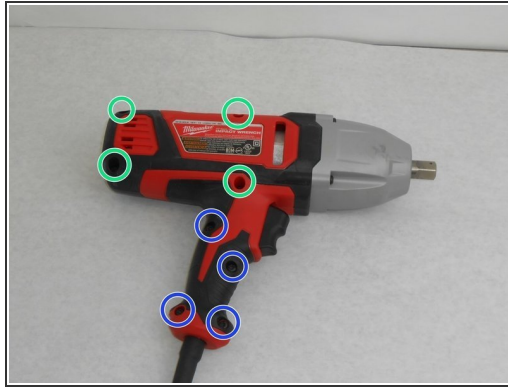
- [T20 Torx Screwdriver](#) (1)
- [iFixit Opening Tools](#) (1)




PARTS:

- [Milwaukee 18-07-2280 Service Field](#) (1)

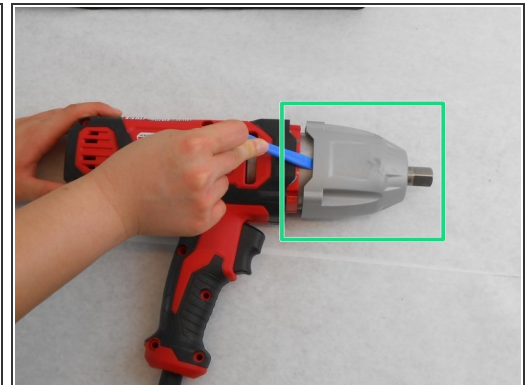
Step 1 — Motor Field Winding



 Ensure that the device is unplugged from any power source to avoid electrical shock.

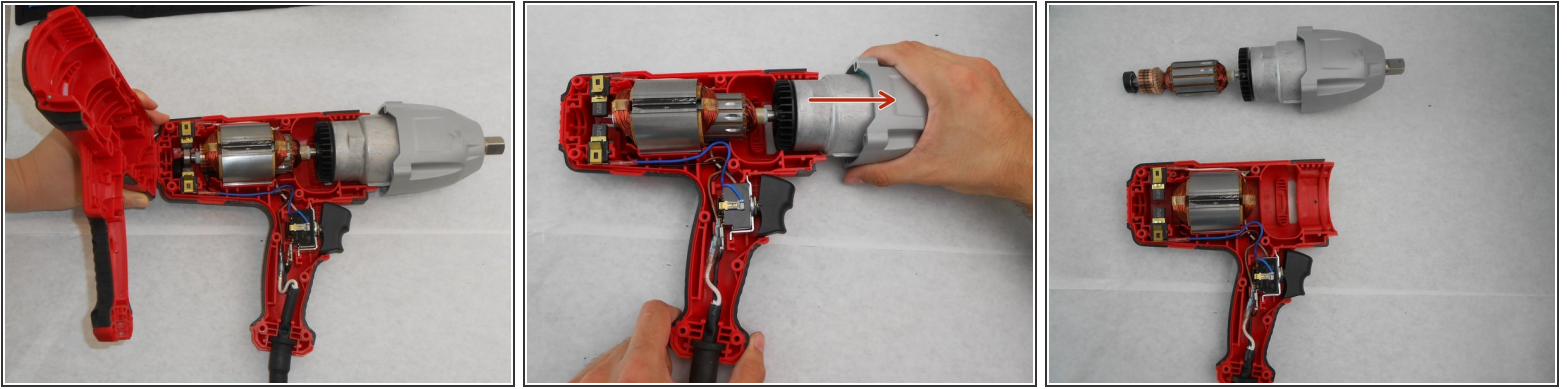
- Flip the device and remove four 18mm screws using a T20 Torx screwdriver.
- Remove four 14mm screws using a T20 Torx screwdriver.

Step 2



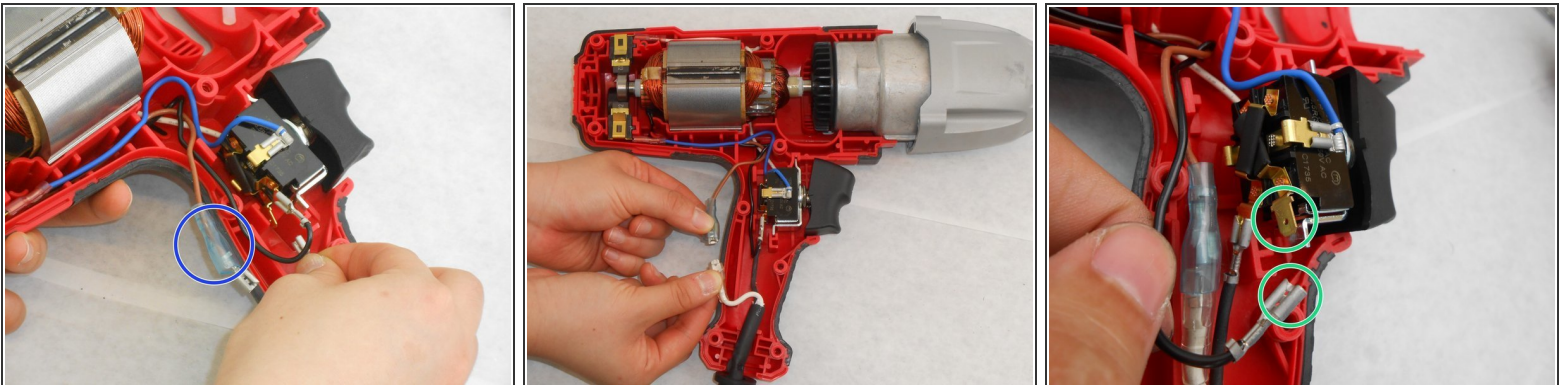
- Remove the four screws on each corner of the gear box assembly using a T-20 Screwdriver.
- Use a plastic opening tool, slide out the gear box assembly away from the main body.

Step 3



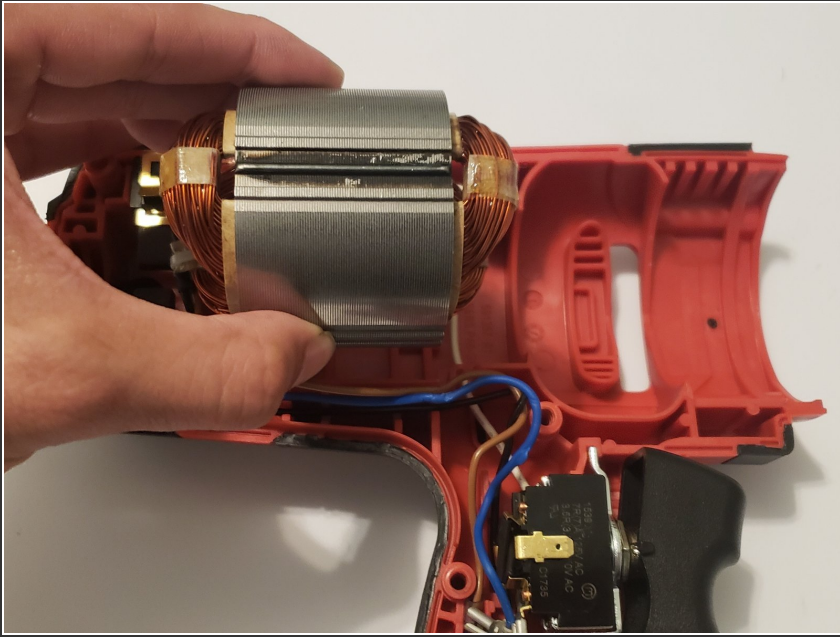
- Separate the top half of the clam shell from the tool.
- Remove the gearbox assembly by sliding it forward and set it aside.
- ⚠ Abrupt pulling may damage the motor brushes. Please remove it with caution.
- ⓘ The motor brushes may need to be compressed to help with the removal of the gearbox assembly.

Step 4



- Disconnect the black AC wire from the brown field wire.
- Disconnect the black field wire from the switch.

Step 5



- Pull straight up on the field winding to remove it from the body.

To reassemble your device, follow these instructions in reverse order.