



Milwaukee Impact Wrench 9070-20 Power Cord Replacement

Use this guide to replace the power cord in your Milwaukee Impact Wrench 9070-20.

Written By: Yuna Choi



INTRODUCTION

If the device is not powering on, the most common cause is from the power cord. Wrapping the cord around the device when stored or using the device from a far distance from where it is plugged may cause the cord issue. This impact wrench operates with a connected power cord. In most cases of having a faulty power issue, it can be easily fixed with replacing the cord line.

But a good news is that the power cord is easy to replace and find from any store. This guide will help you to go through the replacement procedures.




TOOLS:

- [T20 Torx Screwdriver](#) (1)
 - [iFixit Opening Tools](#) (1)
-

Step 1 — Power Cord



 Ensure that the device is unplugged from any power source to avoid electrical shock.

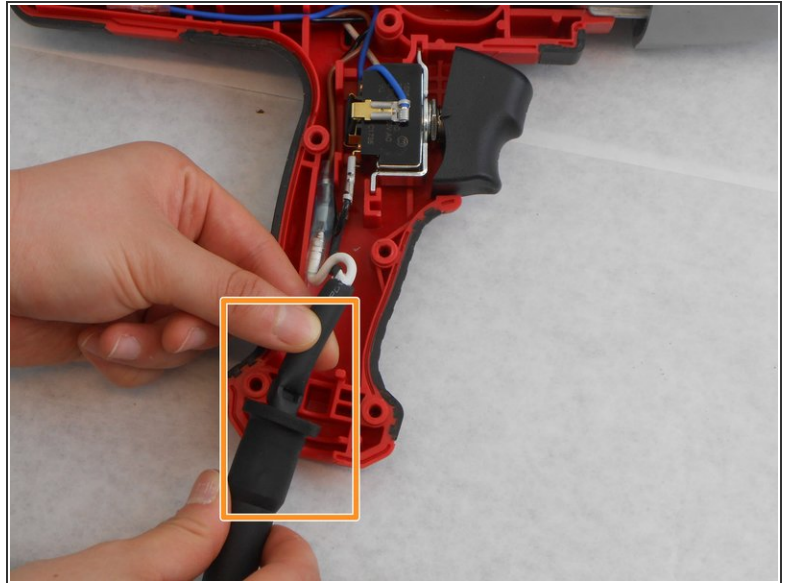
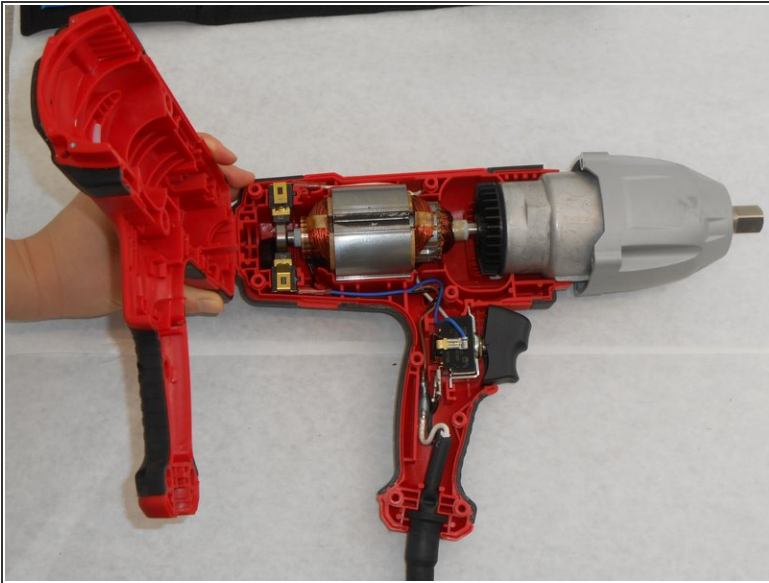
- Flip the device and remove four 18mm screws using the T20 Torx screwdriver.
- Remove the four 14mm screws using the same screwdriver.

Step 2



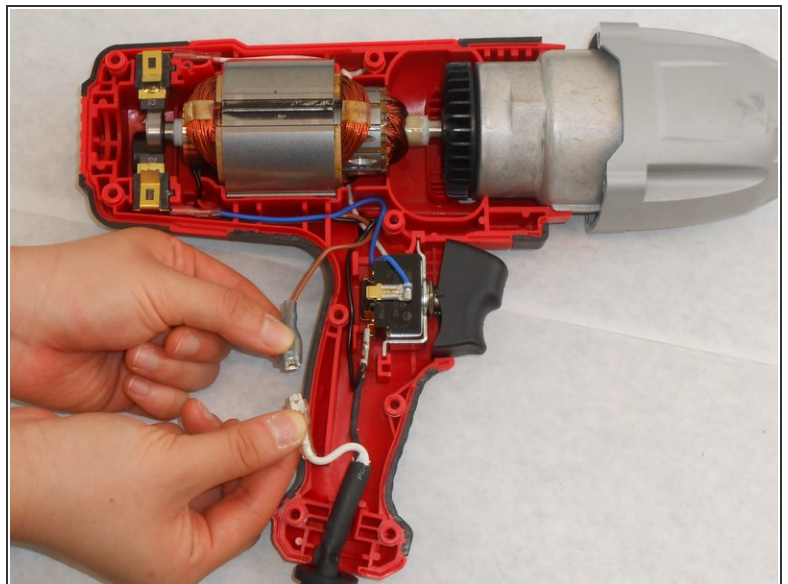
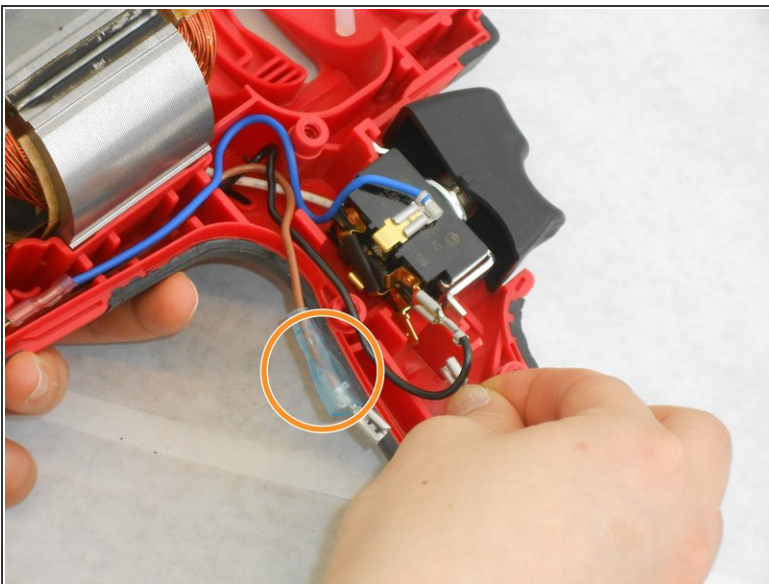
- Hold the device so the gray part faces directly towards you.
- Remove the four screws on the sides using the T20 Torx screwdriver.
- After removing all screws, use a small plastic pry bar to slide the gearbox assembly forward slightly.

Step 3



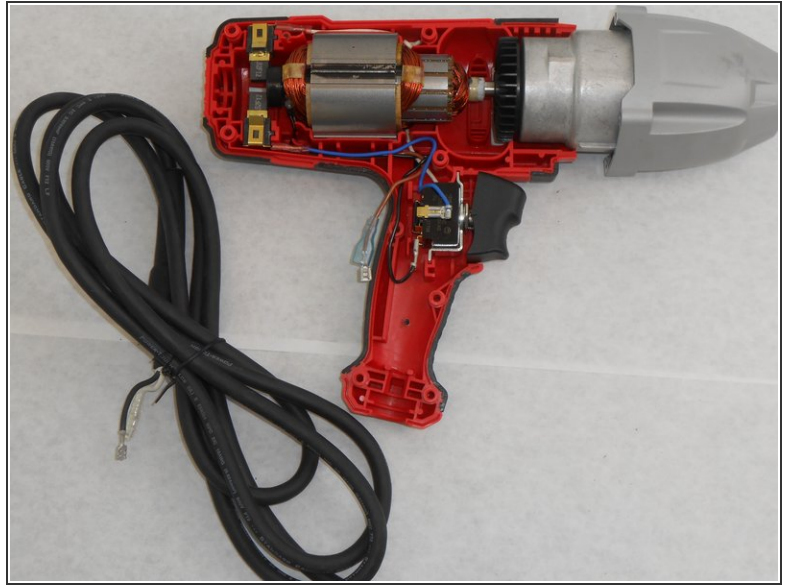
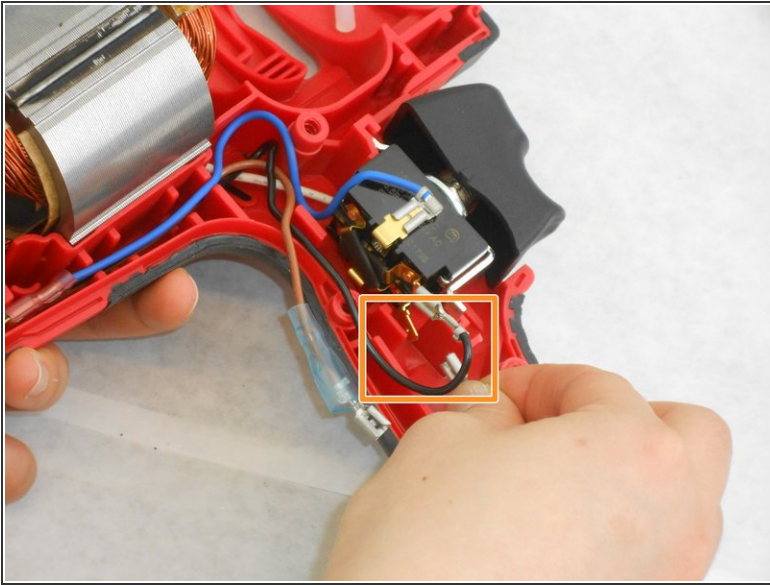
- Gently remove the upper clam shell from the device.
- Lift a black colored power cord from its mount at the bottom of the device, so it can move freely.

Step 4



- Disconnect the brown field winding wire from the white ac power cord wire.

Step 5



- Disconnect the black ac power wire from the connector on the bottom of the forward / reverse switch.
- Remove the AC power cord and replace it with a new one.

To reassemble your device, follow these instructions in reverse order.