



Milwaukee M18 2606-20 Gearbox Replacement

A how to guide for the replacement of the gearbox in a Milwaukee M18 2606-20 cordless power drill.

Written By: Markus Eldridge



INTRODUCTION

If you need to replace the gearbox on your Milwaukee M18 2606-20 cordless power drill (the drill slips and loses torque to turn anything) see this guide on how to remove it. The gearbox is what controls the speed and torque of the drill. Removing some of the parts could require a bit of strength so keep this in mind.



TOOLS:

- [Phillips #3 Screwdriver](#) (1)
- [6mm Allen Wrench](#) (1)
- [T3 Torx Screwdriver](#) (1)
- [iFixit Opening Tools](#) (1)

Step 1 — Chuck



- Rotate the chuck counterclockwise as far as possible to loosen from the base.

Step 2



- Remove the 28 mm inner screw holding the chuck onto the drill using a Phillips #3 screwdriver.
- Rotate the screw clockwise to loosen it.
- ⓘ The inner chuck screw is reverse threaded which is why it needs to be rotated clockwise.

Step 3



- Insert an Allen wrench into the chuck and tighten the chuck onto the wrench.
- ⓘ The Allen wrench will be used for leverage when removing the chuck.
- ⚠ When the chuck is tightened it could make a clicking sound. This is fine and is not causing any harm to the drill.

Step 4



- Rotate the Allen wrench counterclockwise to remove the chuck.

Step 5 — Gearbox



- Using the T3 Torx screwdriver, remove the seven 18 mm screws from the handle area of the case.
- Using the T3 Torx screwdriver, remove the two 21 mm screws from the top of the case.

Step 6



- Using the T3 Torx screwdriver, remove the four 20 mm screws from the front of the case.

Step 7



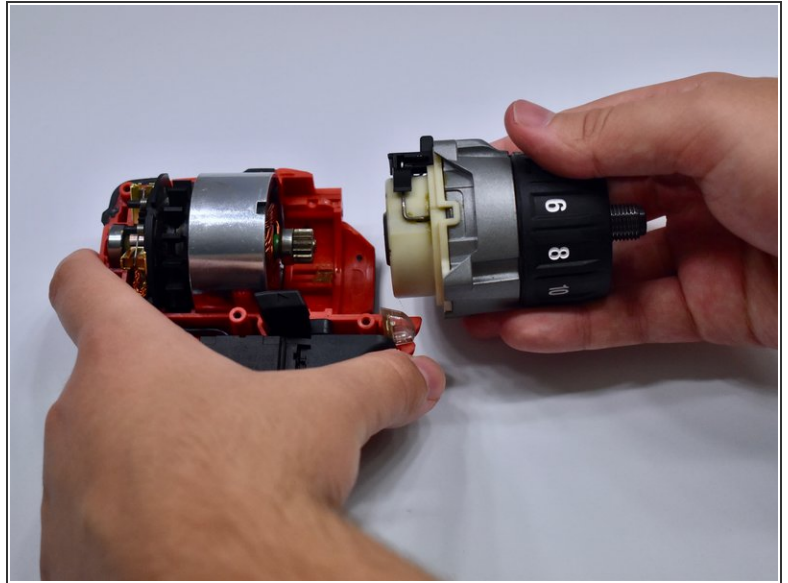
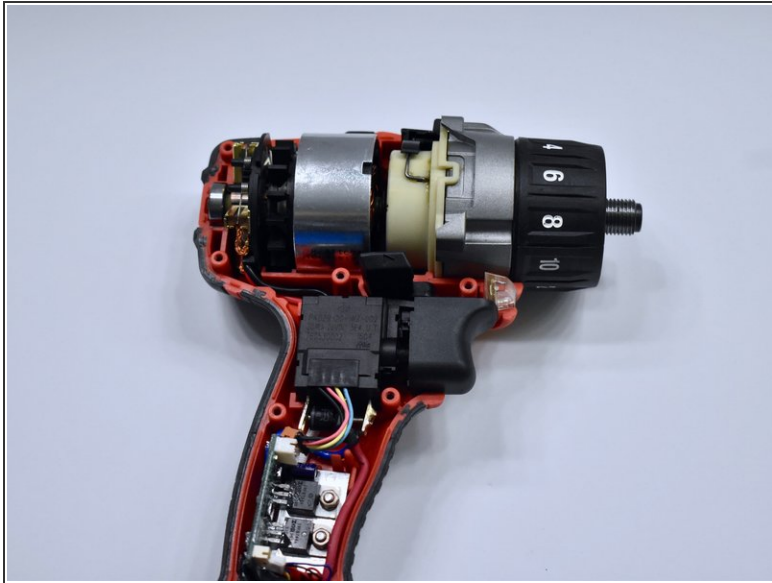
- Peel back the sticker at the bottom of the drill handle.

Step 8



- Open the case by sliding the opening tool all the way around the case to pry it apart.

Step 9



- Lift the gearbox slightly and pull away from the motor to remove it from the case .

To reassemble your device, follow these instructions in reverse order.