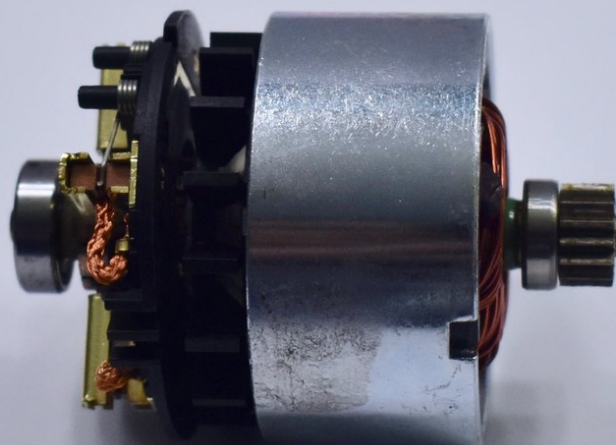




# Milwaukee M18 2606-20 Motor Replacement

How to remove or replace the motor assembly on a Milwaukee M18 cordless power drill, model number 2606-20.

Written By: Markus Eldridge



---

## INTRODUCTION

If you need to replace the motor on your Milwaukee M18 cordless power drill (Model # 2606-20) see this guide on how to remove it. The motor is the powerhouse of the drill allowing it to complete its job. Replacing the motor may be necessary if the motor is making noise or losing speed during operation. Remember to be careful when removing items from the drill to avoid having to replace other items.



### TOOLS:

- [T3 Torx Screwdriver](#) (1)
  - [iFixit Opening Tools](#) (1)
-

## Step 1 — Motor



- Remove the seven 18 mm screws, using the T3 Torx Screwdriver, from the handle area of the case.
- Remove the seven 18 mm screws, using the T3 Torx Screwdriver, from the handle area of the case.

## Step 2



- Remove the four 20 mm screws, using the T3 Torx Screwdriver, from the front of the case.

### Step 3



- Peel back the sticker at the bottom of the drill handle.

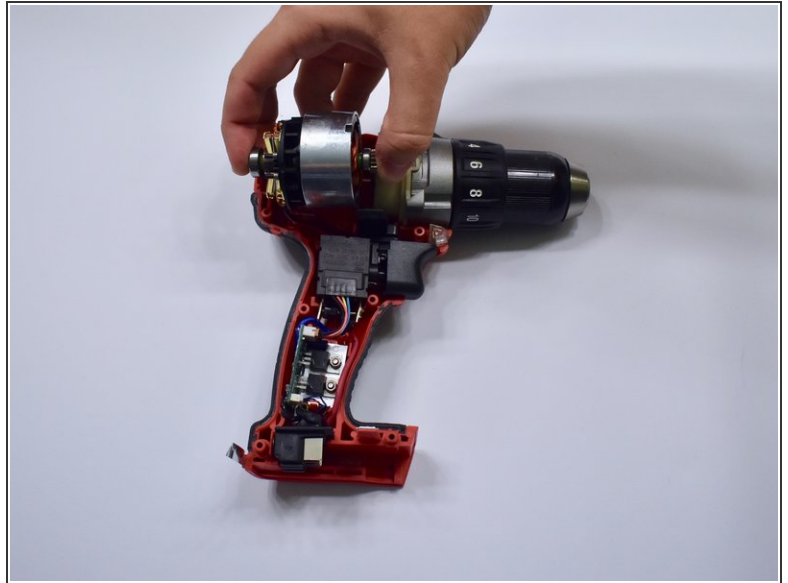
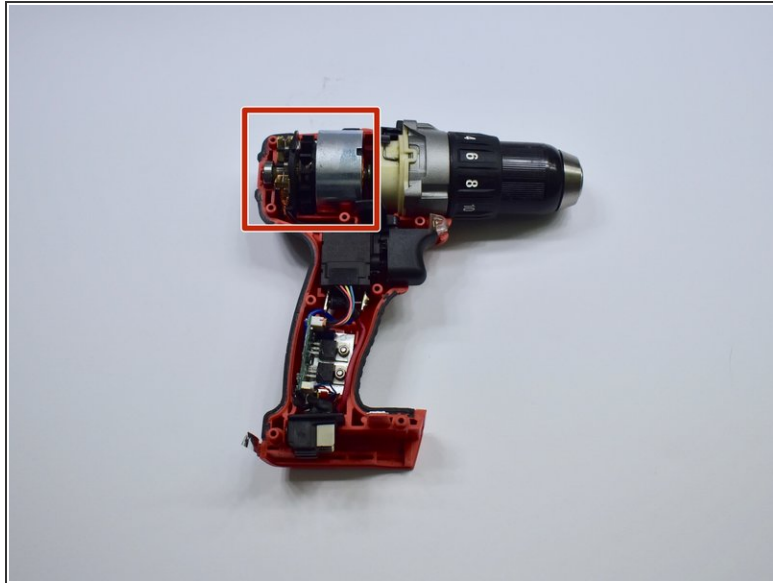
### Step 4



- Open the case by sliding the opening tool all the way around the case to pry it apart.

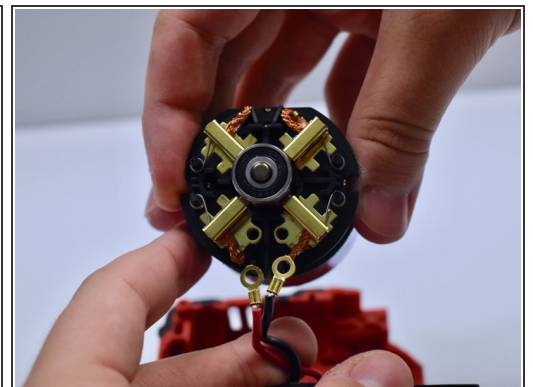
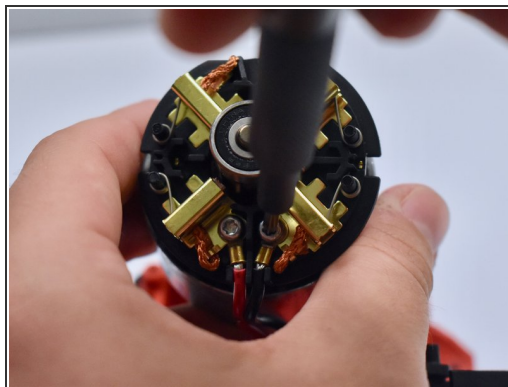
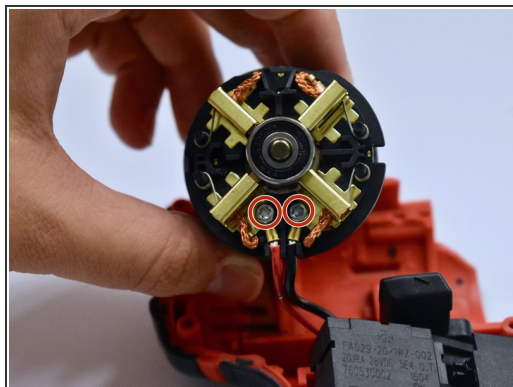


## Step 5



- Lift the motor from the casing.

## Step 6



- Remove the motor from the case and unscrew the two 8mm screws, using the T3 Torx Screwdriver, on the back of the motor.
- Remove the connected wires.

To reassemble your device, follow these instructions in reverse order.