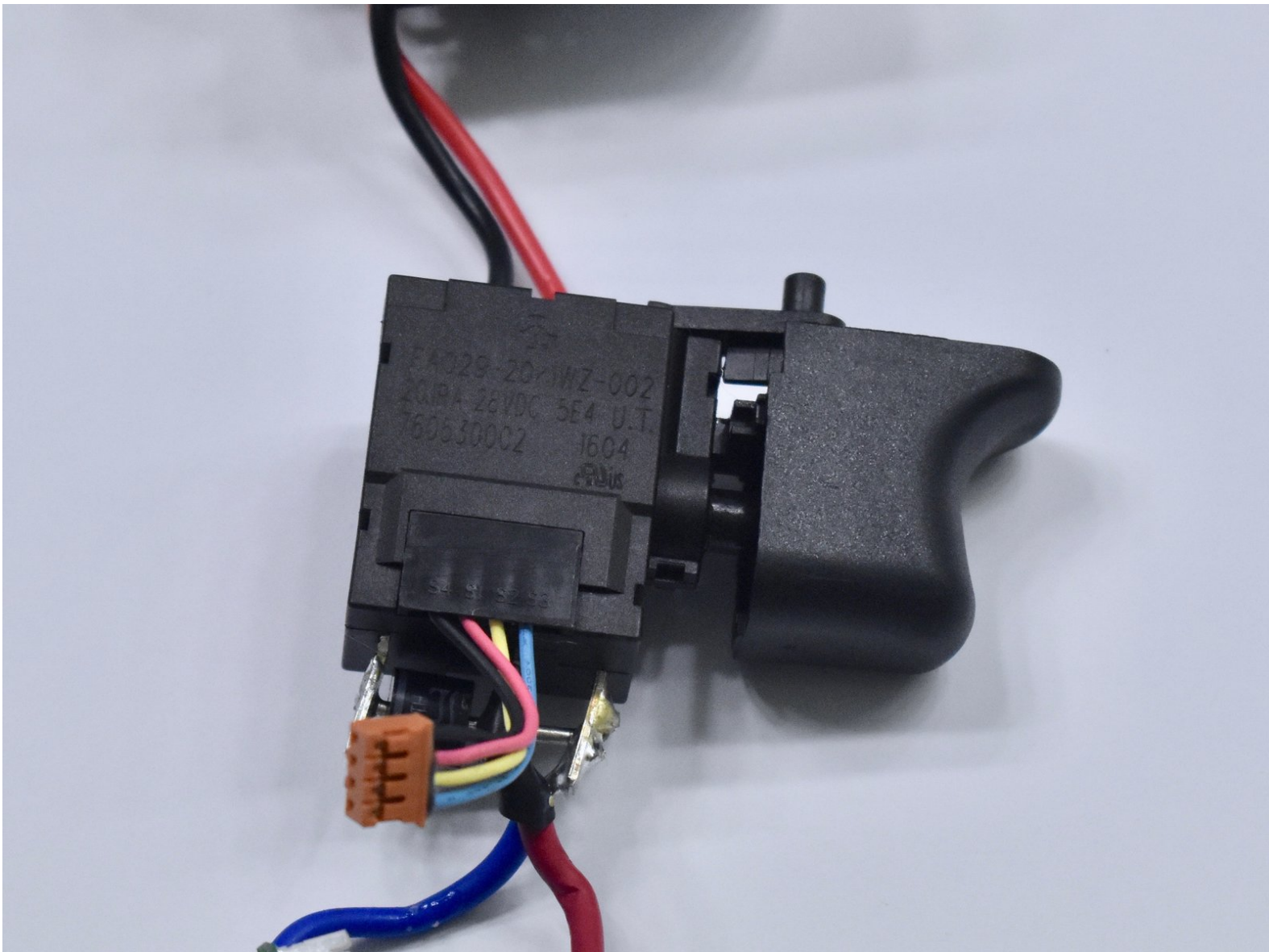




Milwaukee M18 2606-20 Trigger Replacement

A how to guide for how to remove or replace the trigger assembly in the Milwaukee M18 cordless power drill, Model # 2606-20.

Written By: Markus Eldridge



INTRODUCTION

If you need to replace the trigger on your Milwaukee M18 cordless power drill (Model # 2606-20) see this guide on how to remove it. The trigger is what tells the drill to start moving when pulled. Some reasons to replace the trigger are if it is obstructed or it is not engaging. The final steps require some soldering, so see our [How to Solder and Desolder Connections Guide](#) for more information on soldering best practice.



TOOLS:

- [T3 Torx Screwdriver](#) (1)
 - [Soldering Iron](#) (1)
 - [Solder](#) (1)
 - [iFixit Opening Tools](#) (1)
 - [ESD Safe Tweezers Blunt Nose](#) (1)
-

Step 1 — Trigger



- Remove the seven 18 mm screws, using the T3 Torx Screwdriver, from the handle area of the case.
- Remove the two 21 mm screws, using the T3 Torx Screwdriver, from the top of the case.

Step 2



- Remove the four 20 mm screws, using the T3 Torx Screwdriver, from the front of the case.

Step 3



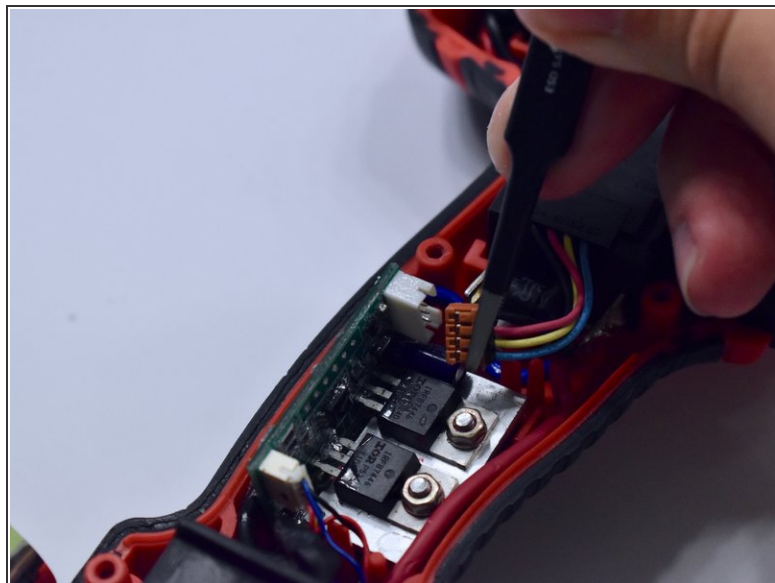
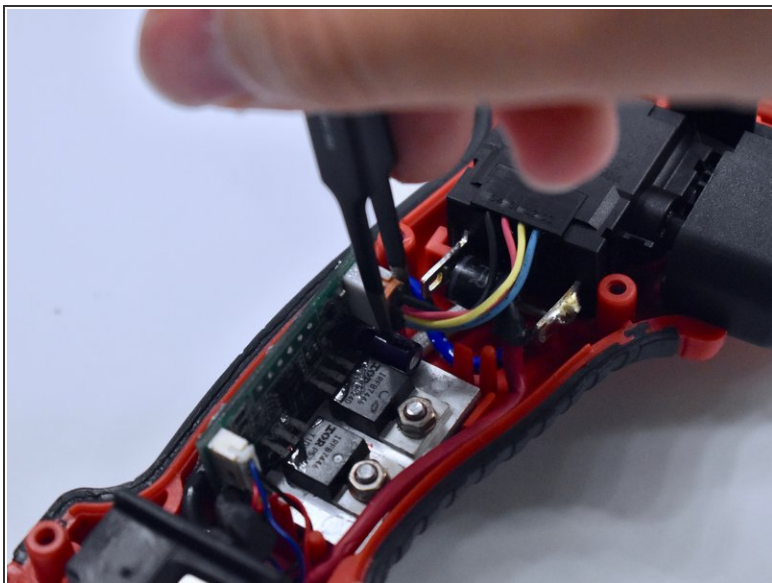
- Peel back the sticker at the bottom of the drill handle.

Step 4



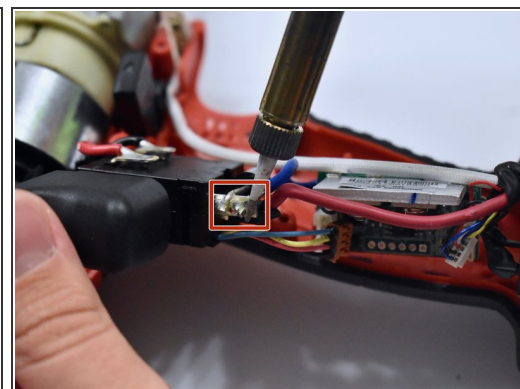
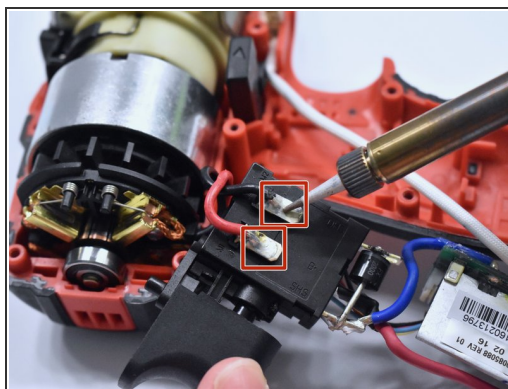
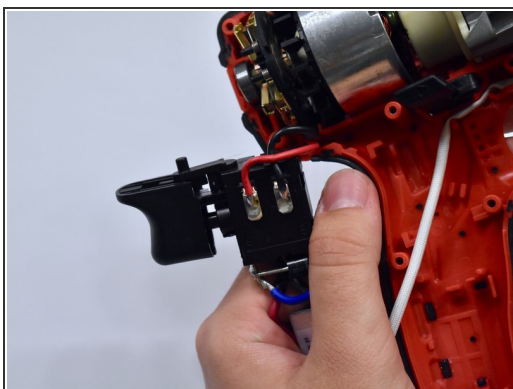
- Open the case by sliding the opening tool all the way around the case to pry it apart.

Step 5



- Unplug the 4-pin connector, using the tweezers, from the circuit board.

Step 6



- Desolder the wires soldered to the trigger.

To reassemble your device, follow these instructions in reverse order.