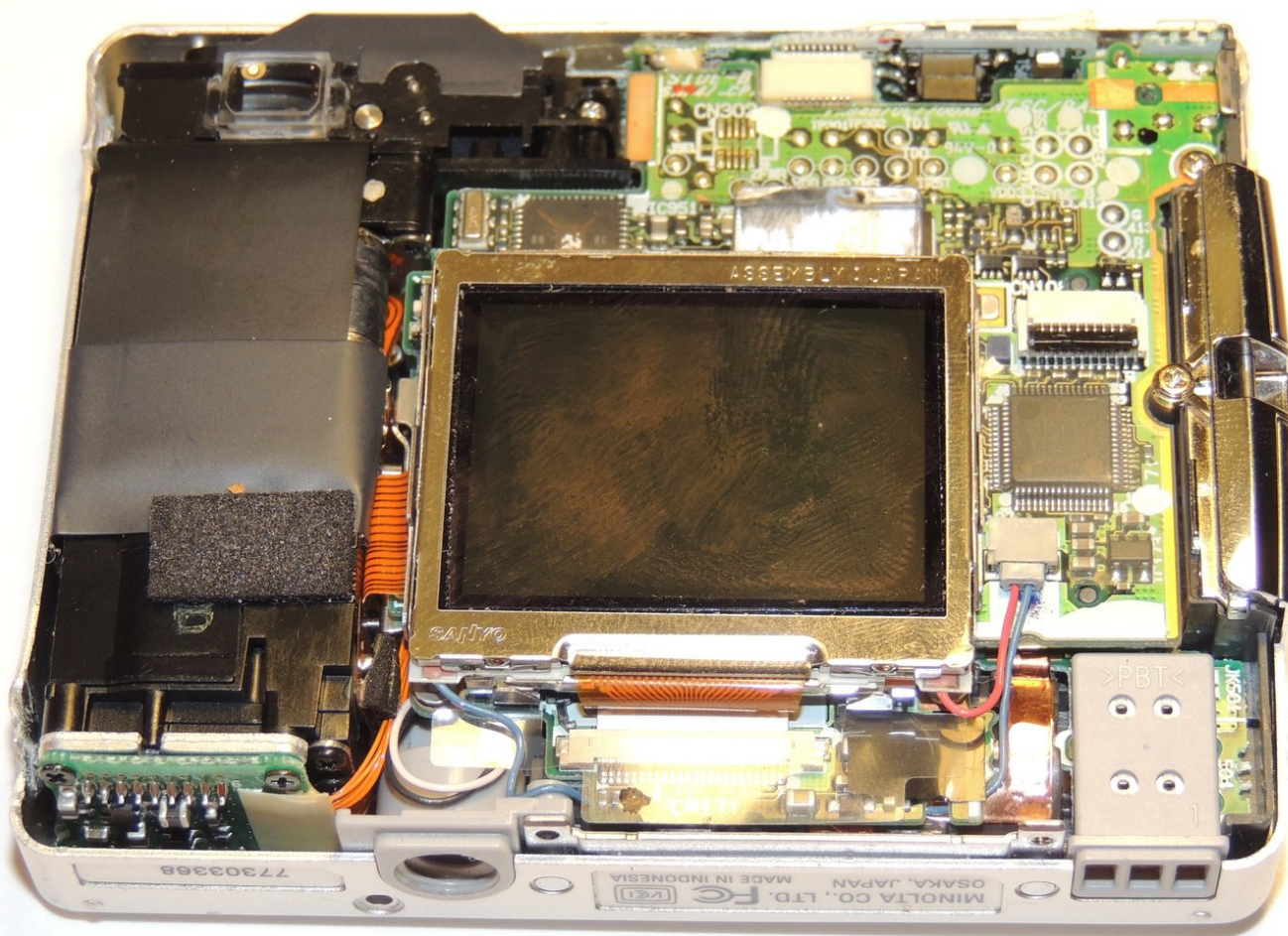




# Minolta Dimage Xt LCD Screen Disassembly

The LCD screen allows for you to view photos and operate the device. LCD screens commonly fail to work due to malfunctions, loose wires, or cracks in the screen.

Written By: Keith Sechrist



---

## INTRODUCTION

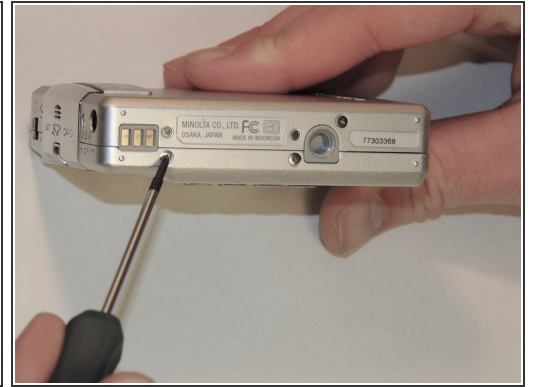
The LCD screen is held into the camera by the outer casing and an internal bracket. It is one component, so there isn't a way to just replace the LCD screen. Once screen is out of the bracket, wires must be removed to completely remove the LCD screen.

---

### TOOLS:

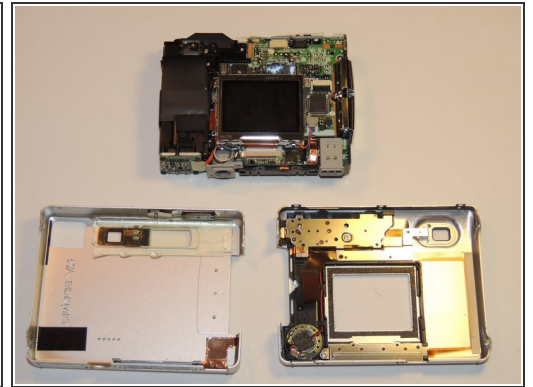
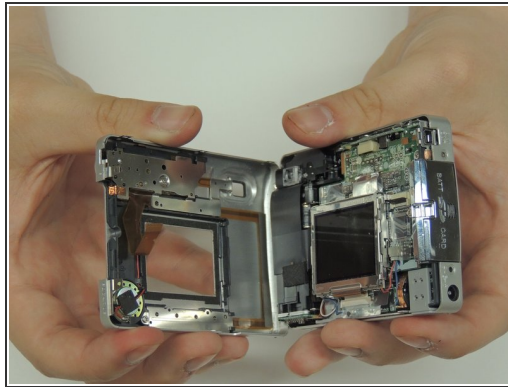
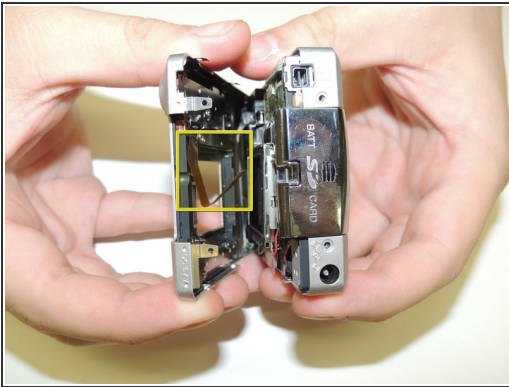
- [Spudger](#) (1)
  - [Phillips #2 Screwdriver](#) (1)
-

## Step 1 — Casing



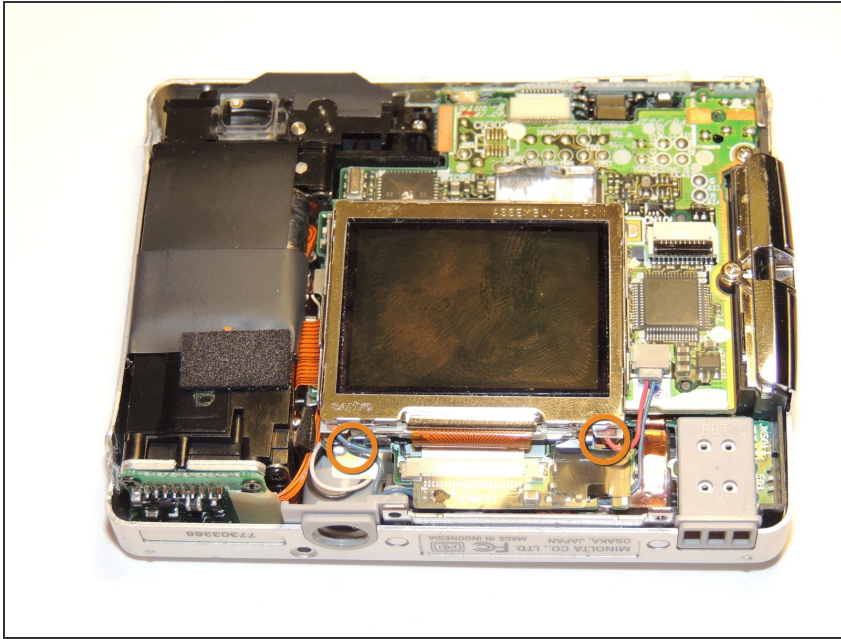
- Locate and remove the silver screws on each side of the camera.
- ⓘ Use the Phillips #00 Screwdriver to unscrew all 2.0mm (4 instances) and 4.0mm (2 instances) screws.

## Step 2



- Then, carefully pry apart the front and back outer casing away from the internal components.
- ⚠ Be aware of the ribbon wire that will disconnect when the casing is detached.

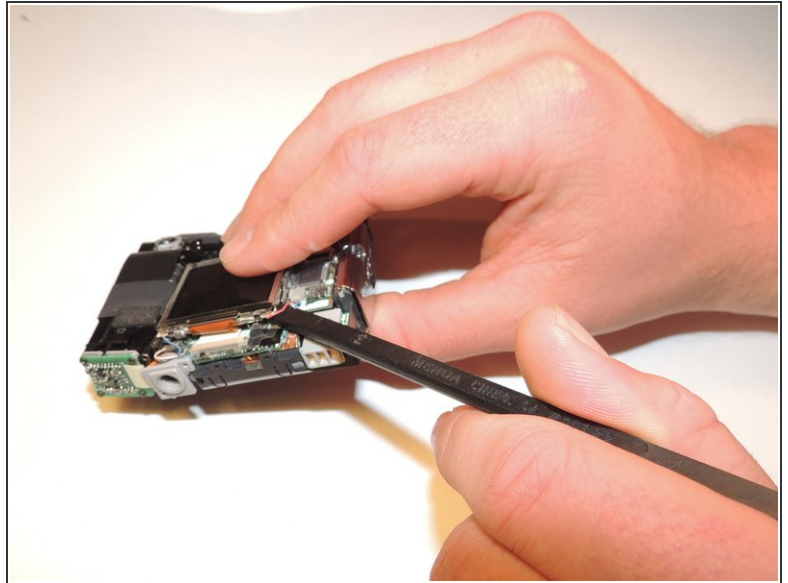
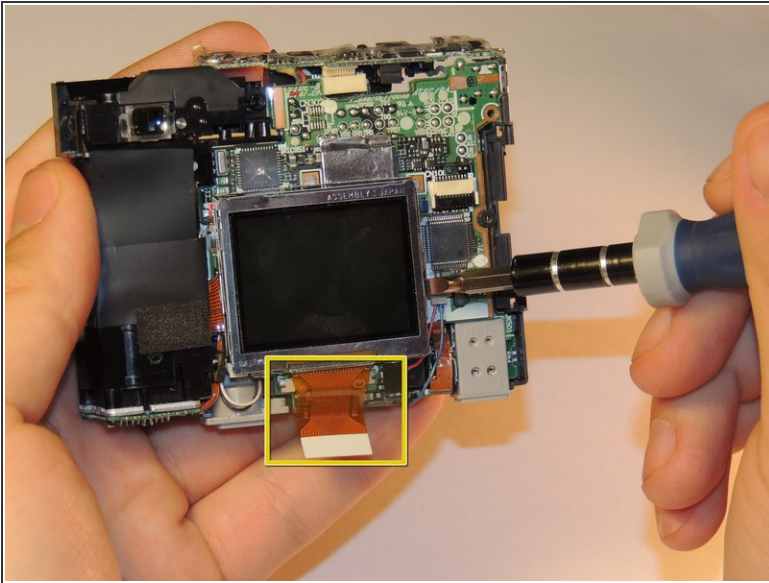
## Step 3 — LCD Screen



- The LCD screen has wires connecting it to the rest of the camera. A bracket holds the LCD in place, so there are no screws beyond this point.
- ⚠ The screen also has a ribbon wire connected at the bottom of the screen. (See 2nd picture)

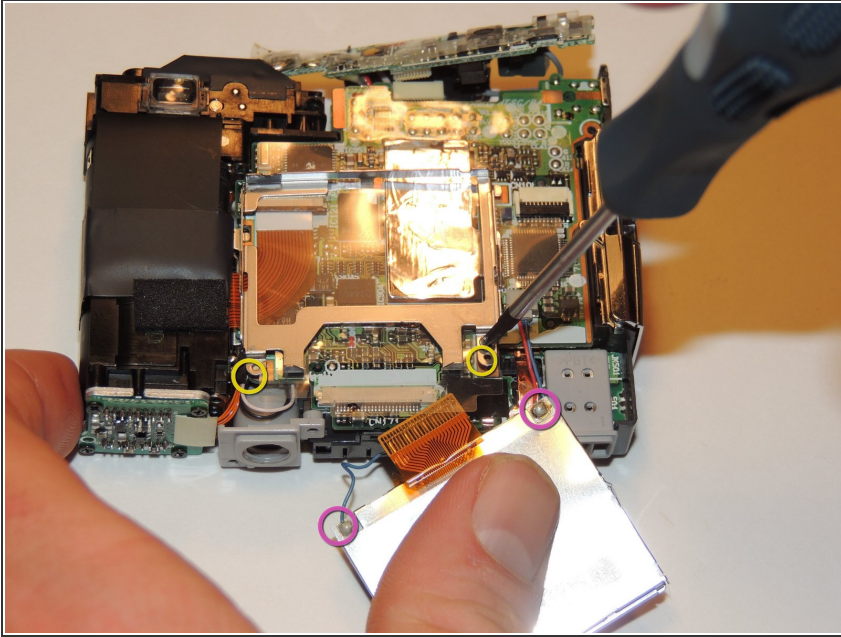


## Step 4



- Detach the strip at the bottom from the LCD screen.
- Gently slide the spudger underneath the screen.
- Note: from the side or a corner is easiest.
- Press the tip of the spudger down as far as you can, slowly prying away from the bracket.

## Step 5



- The screen is not detached, but is removed from its bracket. Note: Wires are still connecting the screen to the camera at the bottom corners.
- Check to make sure wires are connected, so it will receive proper power supply.
- To remove the bracket for the LCD screen, remove these 1.5 mm (2 instances) screws using the #00 Phillips screwdriver.

To install new LCD screen you will have to reconnect the wires and properly place in bracket. Make sure to reattach the ribbon wire before finishing repairs.