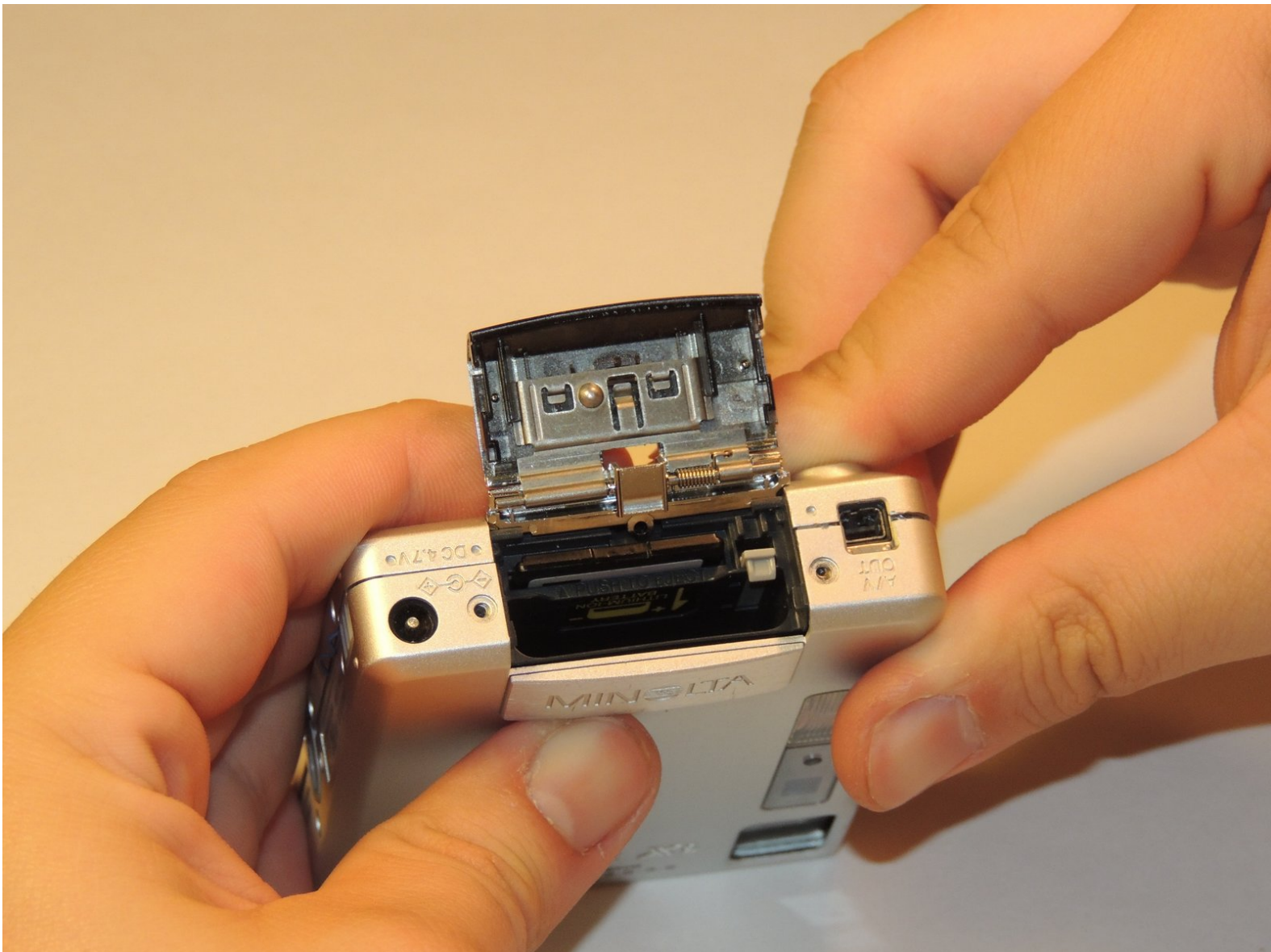




Minolta Dimage Xt SD Card Replacement

This guide explains how to replace the SD memory card.

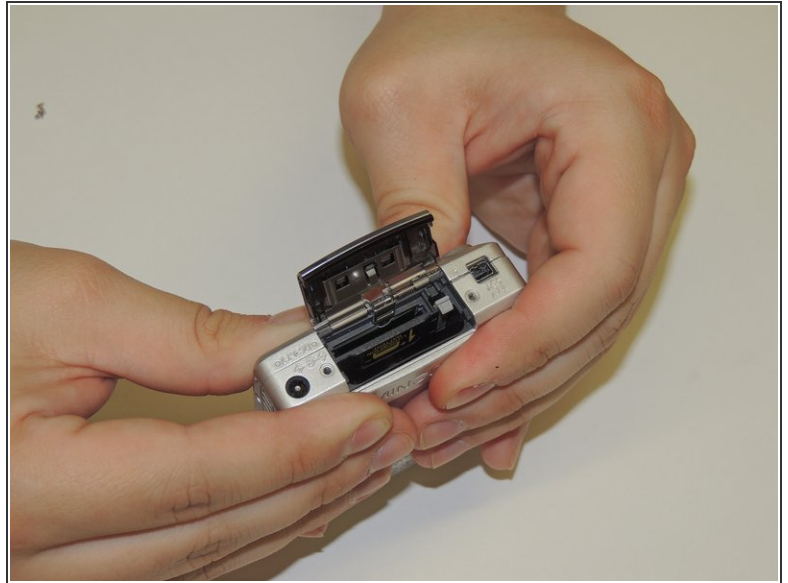
Written By: Megan Milam



INTRODUCTION

The Minolta Dimage Xt requires an SD card to operate. If the card's memory is full, the SD card must be removed from the camera so it's pictures can be exported. Once the card is empty, it can be reinserted.

Step 1 — SD Card



- Locate the latch labeled BATT SD CARD on the right side of the camera.
- Push the latch in the direction of the arrow, and it will spring open.

Step 2



- Insert the SD card into the smaller of the two slots. The metallic connectors should enter the camera first and the label of the SD card can be seen from a front view of the camera.
- Push the card all the way into the slot until there is a click, and the card stays in place.
- To remove the SD card, push the card down and release. The card will pop up and can be pulled the rest of the way out.

When the card has been removed/inserted, push the latch down, and it will lock into place.