



Minolta Maxxum QTSI Tripod Mount Replacement

This guide will show you how to replace the tripod socket on your Minolta Maxxum QTSI camera.

Written By: Jordan Ellery



INTRODUCTION

If you are unable to mount your camera to a tripod, the tripod socket could be broken and may need to be replaced.

TOOLS:

- [Tweezers](#) (1)
 - [Phillips #00 Screwdriver](#) (1)
-

Step 1 — Tripod Mount



- With a screwdriver, remove the (7) black Phillips #00 5.0mm screws on the bottom of the camera.
- ⓘ The screws are located on the outer edge of the bottom panel.
- ⚠ Be careful when removing the screws from the panel because they are easy to lose.

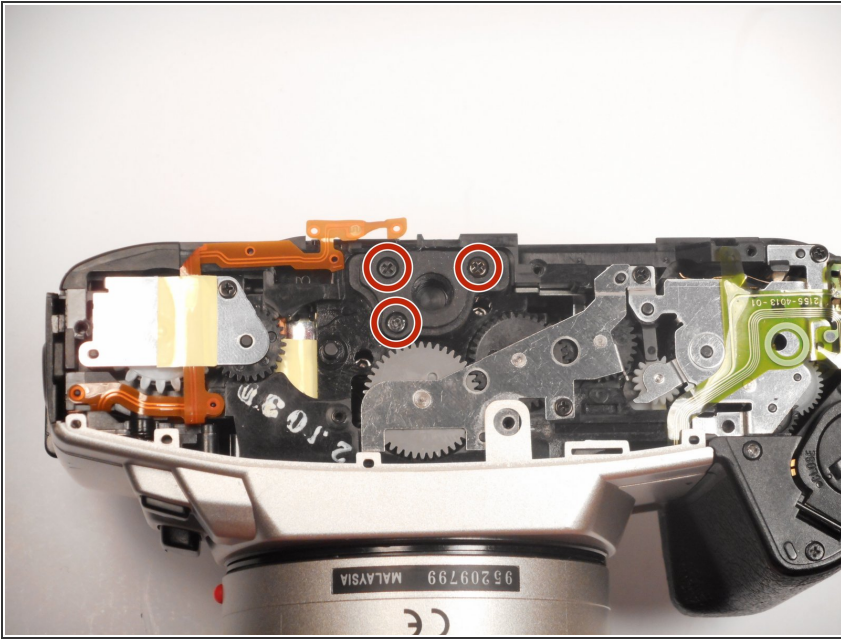
Step 2



- ⓘ Once all the screws are removed, the panel should easily come off.
- Remove the bottom panel of the camera by placing your index finger and thumb on the outer edges of the panel.
- Pull the bottom panel towards you, it should come off easily.

This document was generated on 2019-09-22 01:12:45 AM (MST).

Step 3

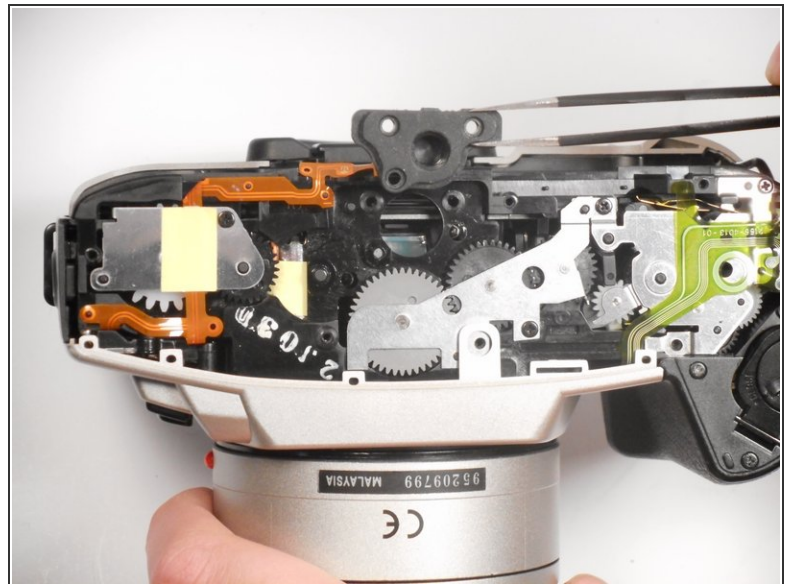
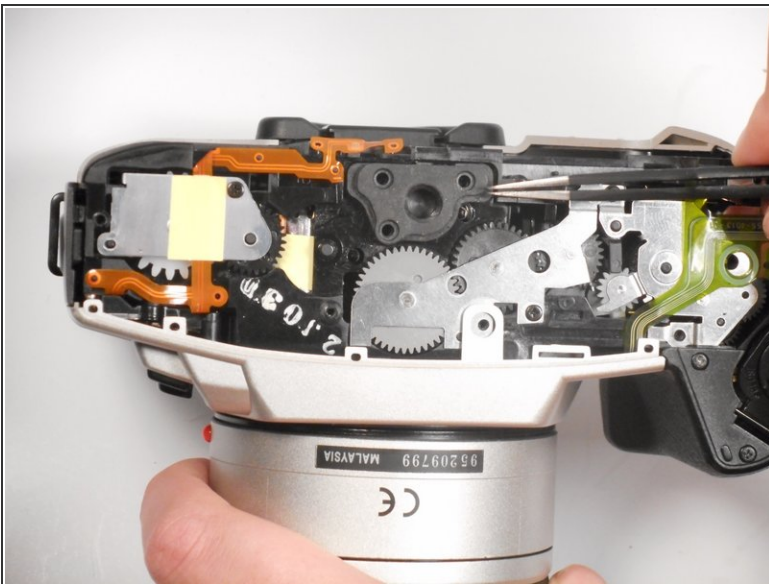


i The tripod socket is visible when the bottom panel is removed.

- Remove the (3) black Phillips #00 6.25mm screws from the tripod socket.

! When the screws are removed, the tripod socket is free and can easily be lost.

Step 4



- Use the tweezers to gently remove the tripod socket, and replace it.

To reassemble your device, follow these instructions in reverse order.