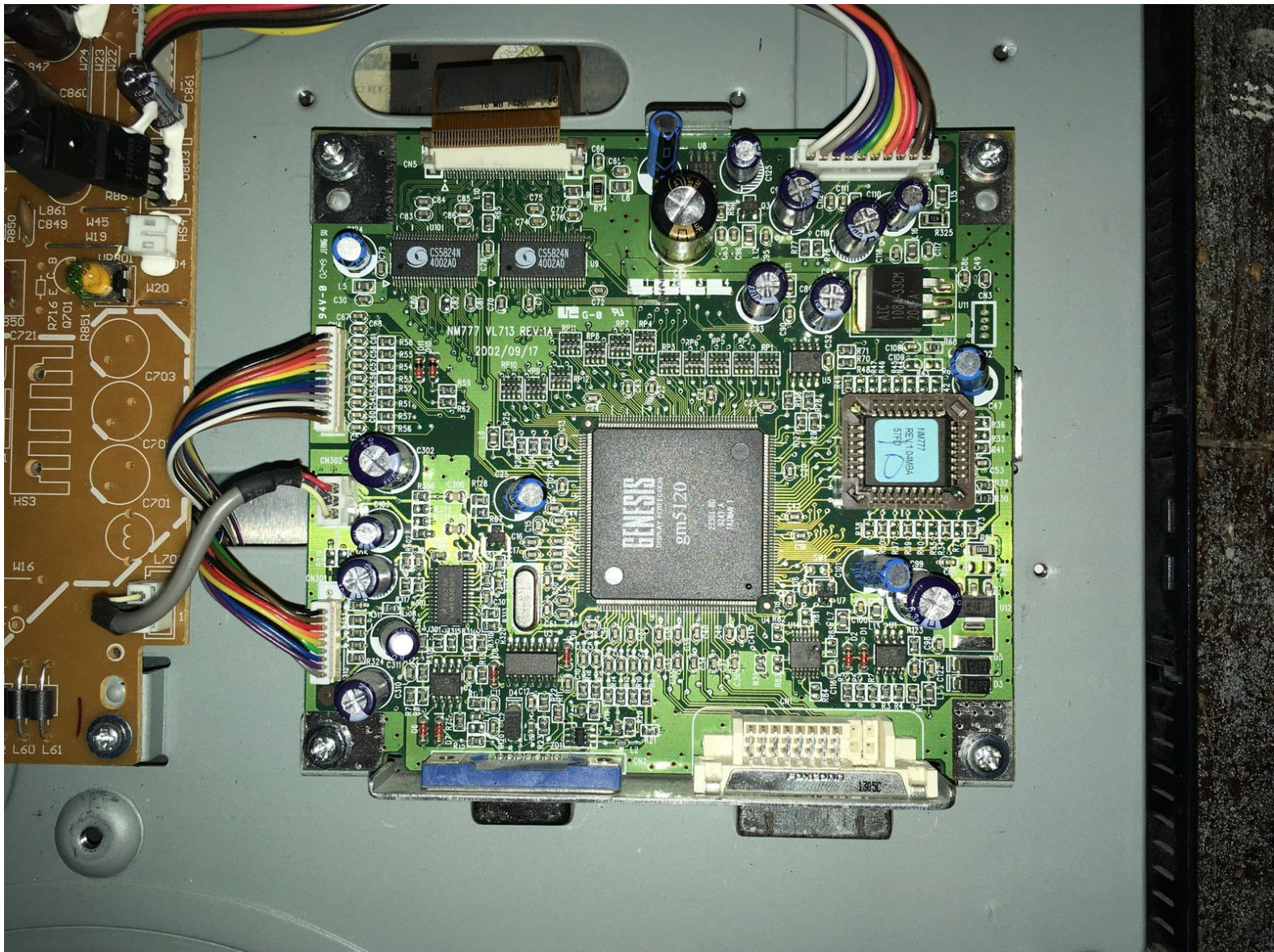




Mitsubishi Diamondpoint NXM76LCD Motherboard Replacement

Removal and replacement of the the motherboard for the Mitsubishi Diamondpoint LCD.

Written By: Padraic Hoselton

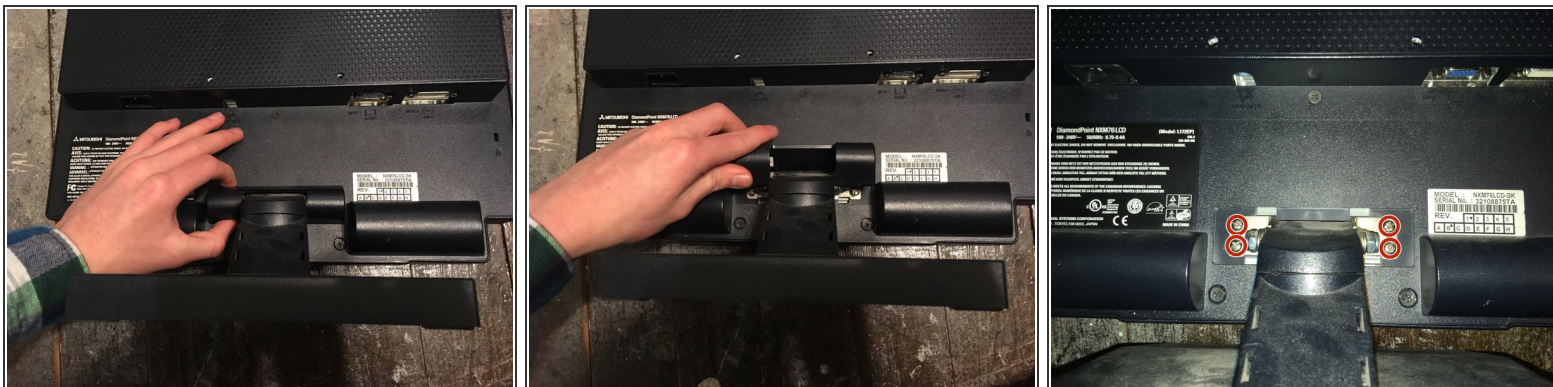




TOOLS:

- [Phillips #2 Screwdriver](#) (1)
- [Phillips #1 Screwdriver](#) (1)
- [5mm Nut Driver](#) (1)

Step 1 — Removing the stand.



- Lift the black cover off.
- Remove all 4 Phillips #2 screws.

Step 2 — Remove the 5 screws



- Remove the two 24mm Phillips #2 screws.
- Remove the three 8mm Phillips #2 screws.

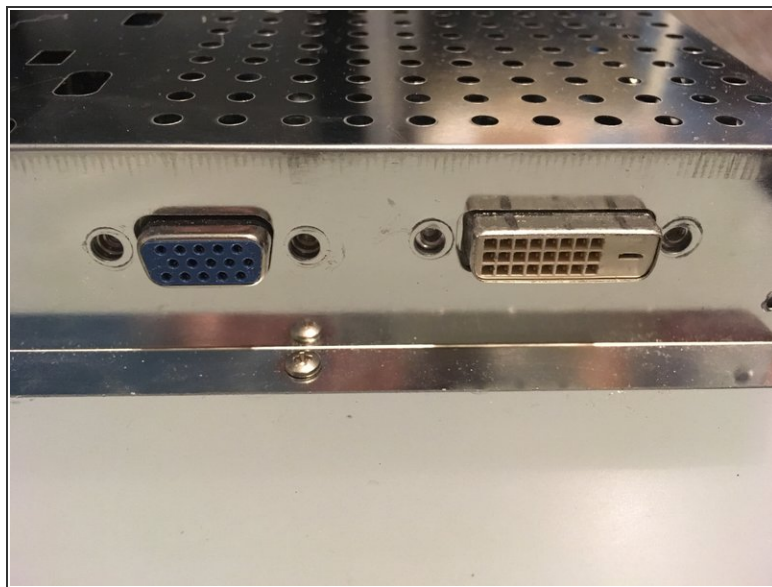
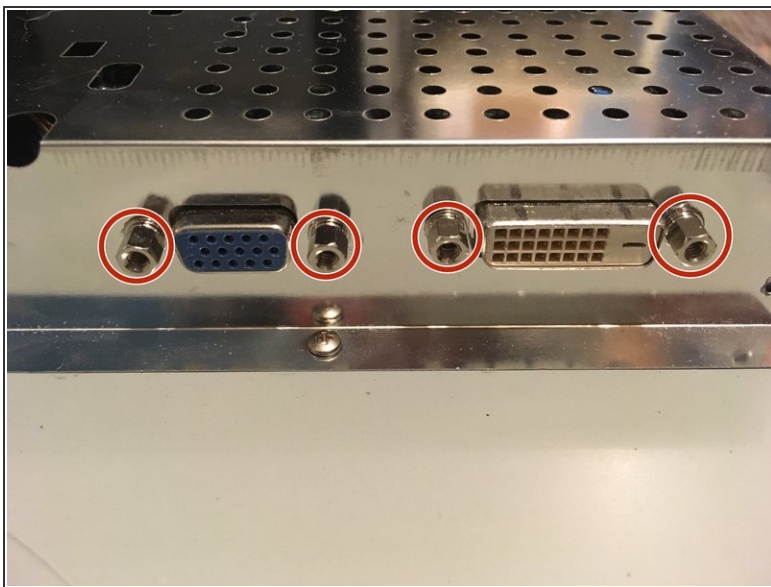
Step 3 — Remove the back panel



- Lift the back and pry the back off.

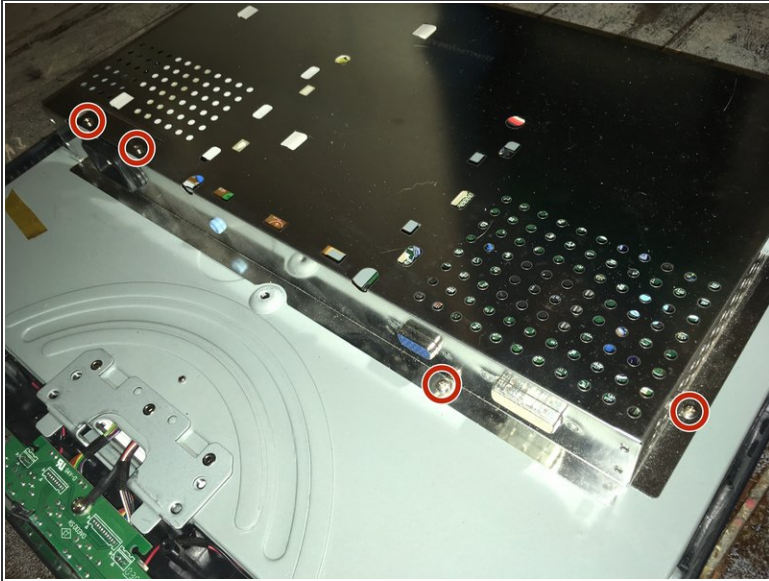
i The panel is held in with clips on the side. It needs a lot of force to take it off.

Step 4 — Remove the four screws



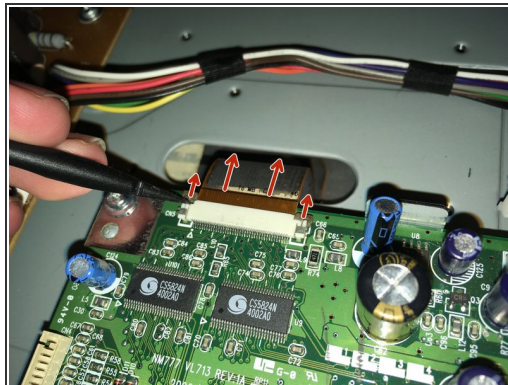
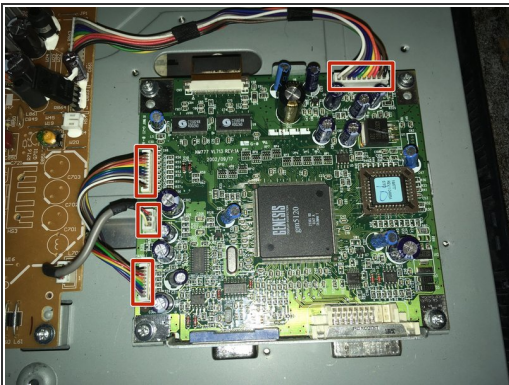
- Remove the four 5mm nut screws.

Step 5 — Remove the 5 screws



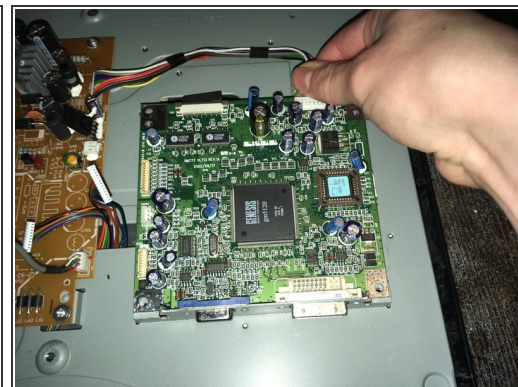
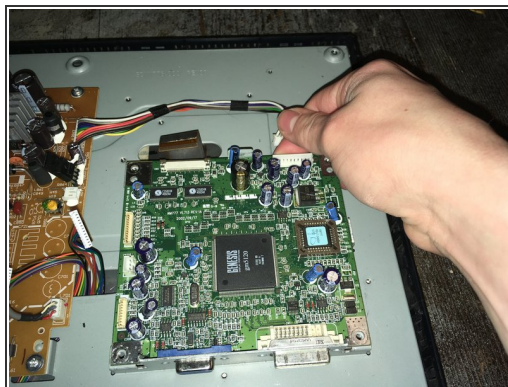
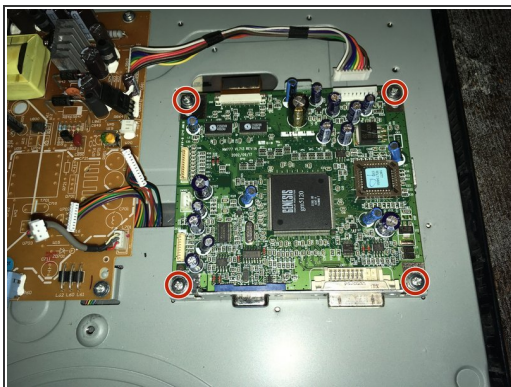
- Remove the seven Phillips #1 screws.

Step 6 — Remove the cables



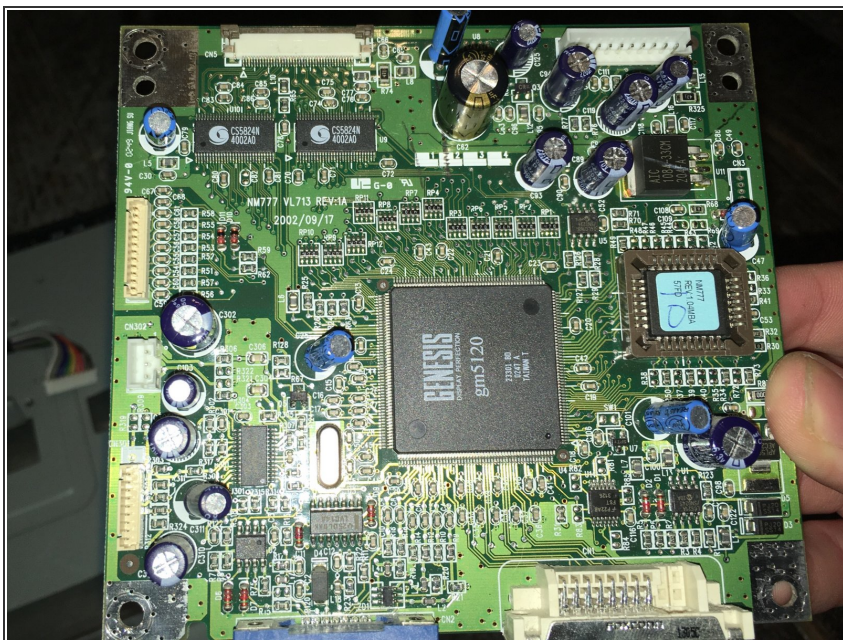
- Remove all the cables.

Step 7 — Remove the motherboard



- Remove the four screws.
- Pull the motherboard up and off.

Step 8



- Now you can replace it with a new one.

To reassemble your device, follow these instructions in reverse order.