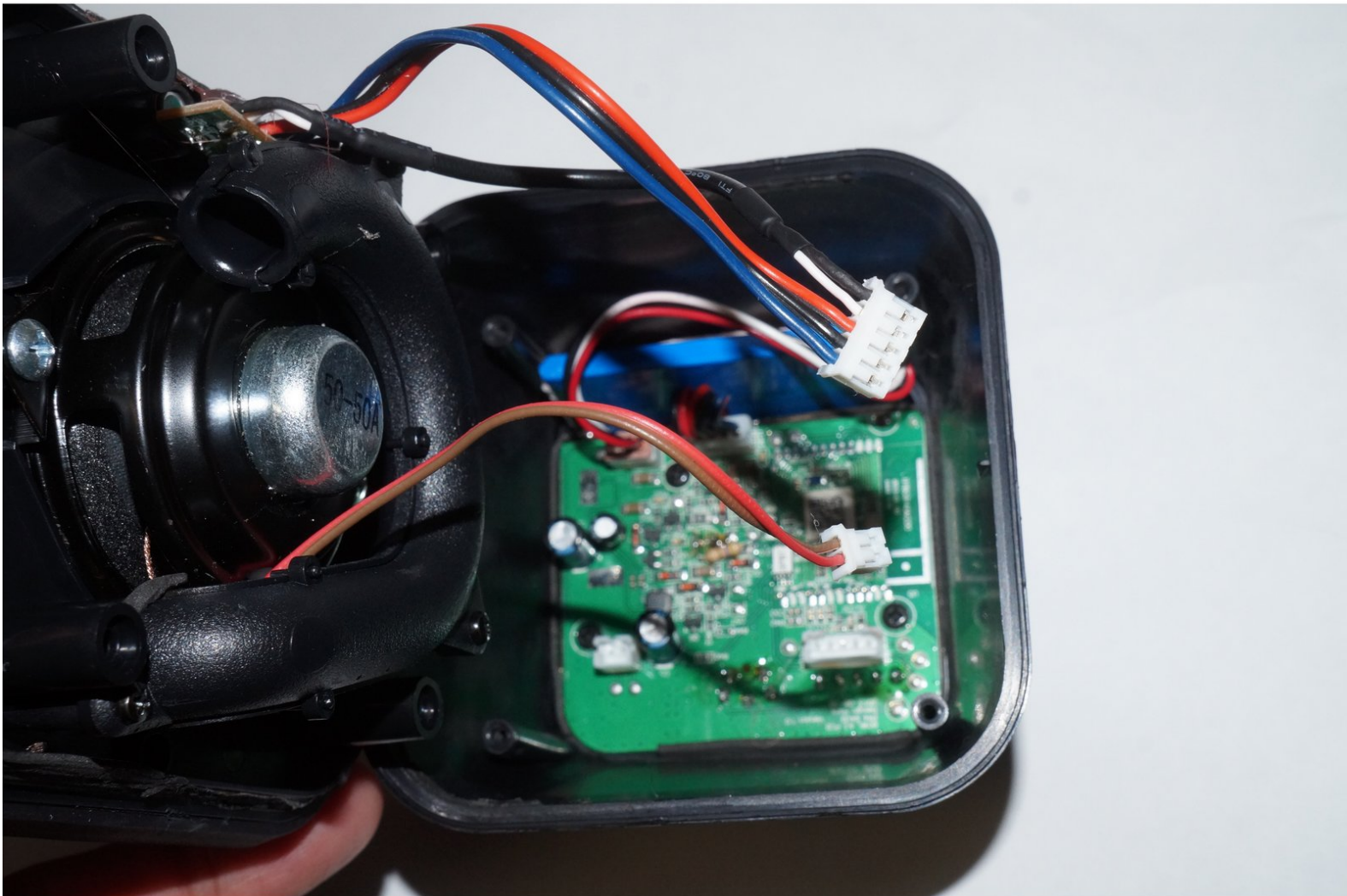




# Modal MD-SPBT01 LED Light Wiring Replacement

This guide will show you how to replace the wiring for the LED light on the front of the speaker.

Written By: Nathan Hall



---

## INTRODUCTION

For this guide, we will be opening up the speaker and taking the defective LED wiring out so the light works again.

---



### TOOLS:

- [iFixit Opening Tools](#) (1)
  - [Phillips #00 Screwdriver](#) (1)
-

## Step 1 — LED Light Wiring



- Use your plastic opening tool to pry the metal speaker cover off.

## Step 2



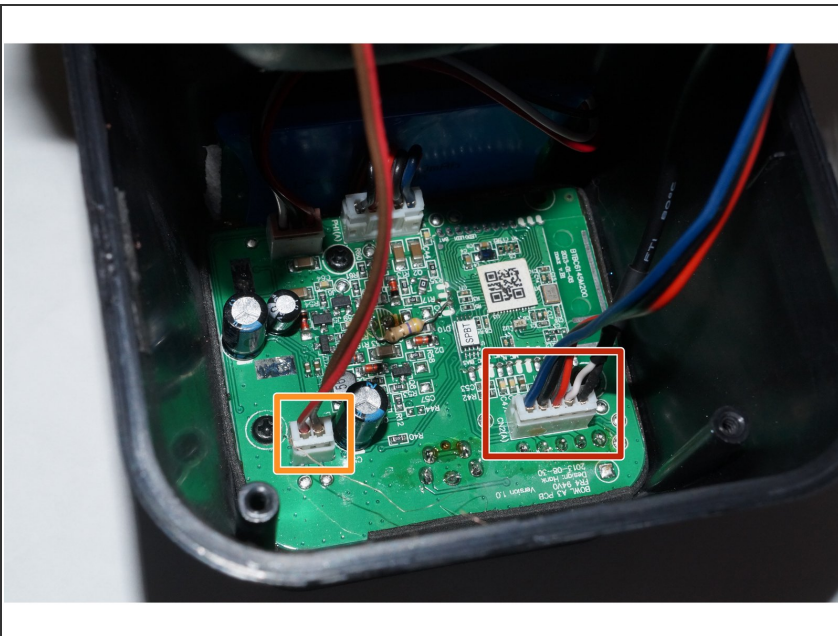
- You can now use the Phillips #00 screwdriver to remove the four screws.

### Step 3



- With the screws removed, you can now remove the top piece of the speaker to gain access to the interior.

### Step 4



- Locate the LED wire connection and remove it from the mother board.
- To make replacing the LED wiring easier, remove the speaker wire to fully disconnect the speaker from the mother board.



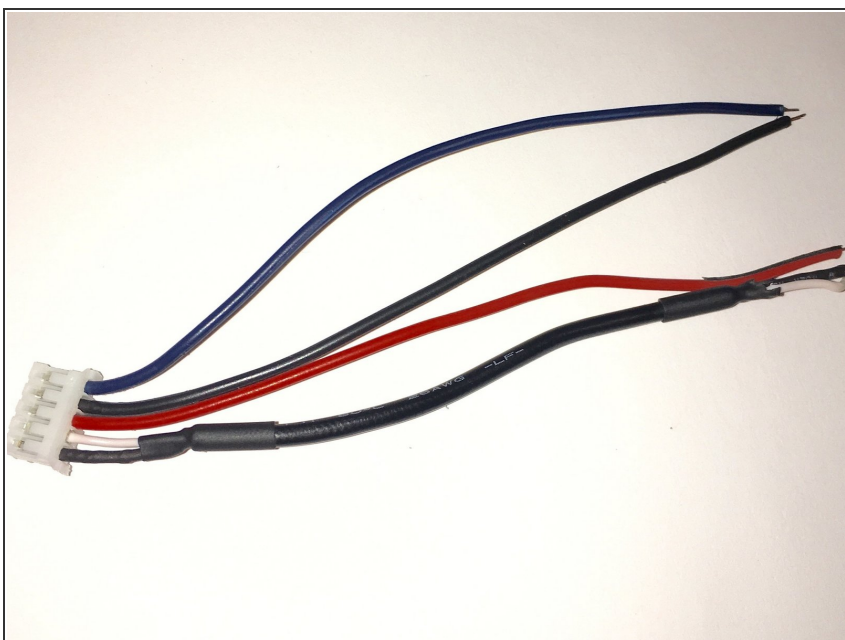
## Step 5



- Now you can remove the wiring from the speaker side of the device.

**i** It might take a bit of work to remove the wires because they are glued down on this side.

## Step 6



- Now with the LED wiring removed, a new wire can be installed.

To reassemble your device, follow these instructions in reverse order.