



Modal MD-SPBT01 Speaker Wiring Replacement

This guide will show you how to replace the speaker wiring for the Modal MD-SPBT01.

Written By: Nathan Hall



INTRODUCTION

We will be opening up the speaker and replacing the wiring so the sound will work again.



TOOLS:

- [iFixit Opening Tools](#) (1)
 - [Phillips #00 Screwdriver](#) (1)
-

Step 1 — Speaker Wiring



- Use the plastic opening tool to pull the metal cover off the top of the speaker.

Step 2



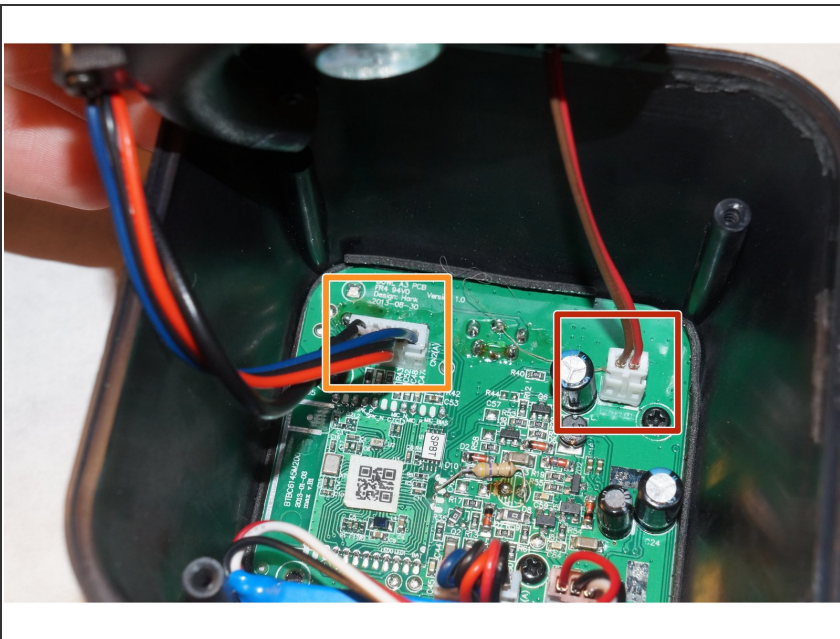
- Remove the four screws that are inside the holes on the top of the speaker.
- Use a Phillips 00 screwdriver to remove the 10mm screws.

Step 3



- Pull the top piece of the speaker off to allow access to the interior.

Step 4



- Locate the speaker wire connection and remove the wiring.
- Locate the LED lighting wire and remove that as well.

Step 5



- Once you disconnect the wires, you can remove the speaker.

Step 6



- Remove the positive and negative connections for the wiring to fully disconnect the wire.
- Now that you have removed the defective wiring, you can install a new one.

To reassemble your device, follow these instructions in reverse order.