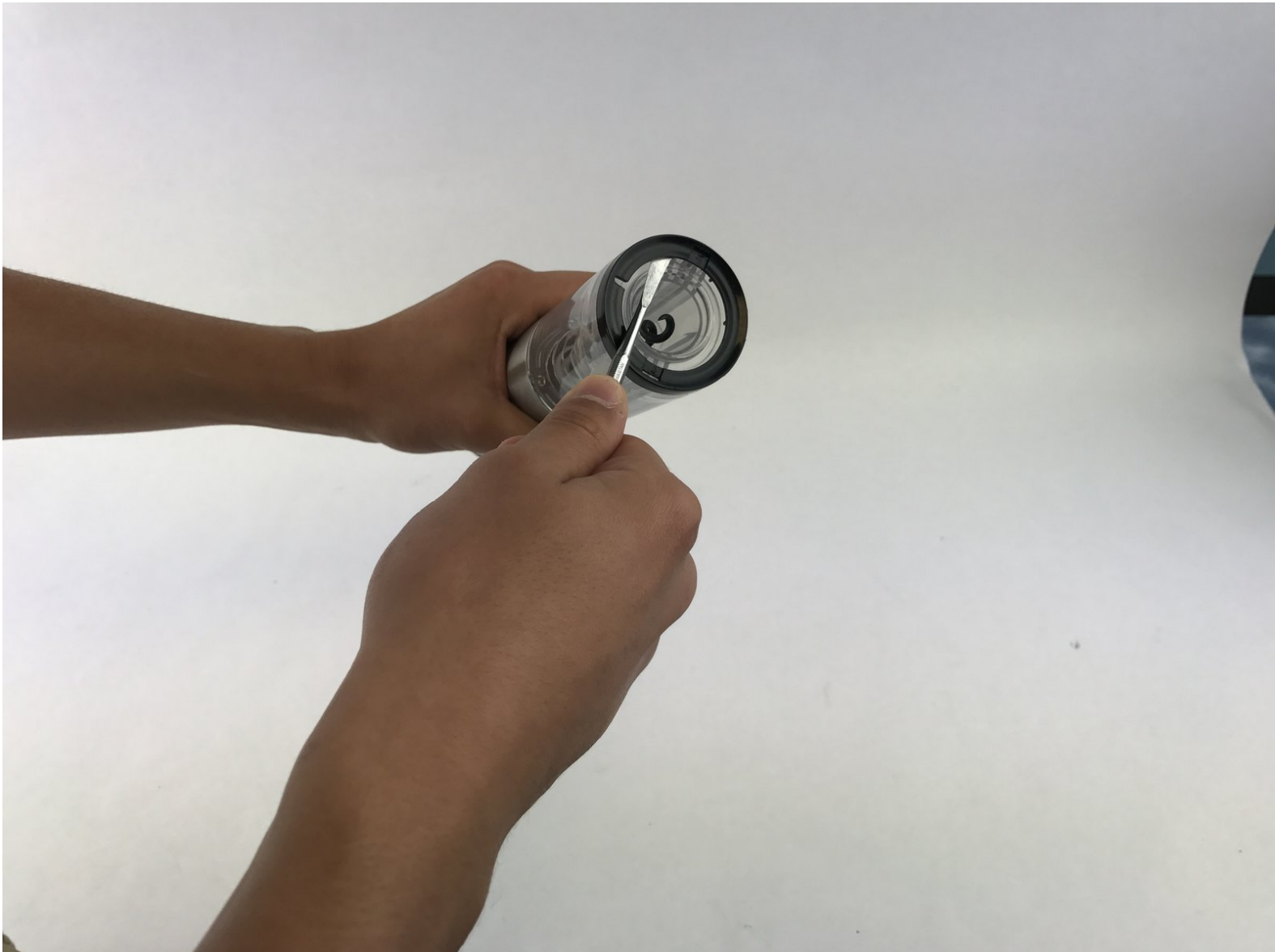




Modal Rechargeable Wine Opener Power Button Replacement

Replacing the forward and backwards buttons to a Modal Rechargeable Wine Opener

Written By: Lauren Spicher



INTRODUCTION

In this guide we will be showing one how to replace the forward and backwards buttons to a Modal Rechargeable Wine Opener in 5 quick and easy steps.



TOOLS:

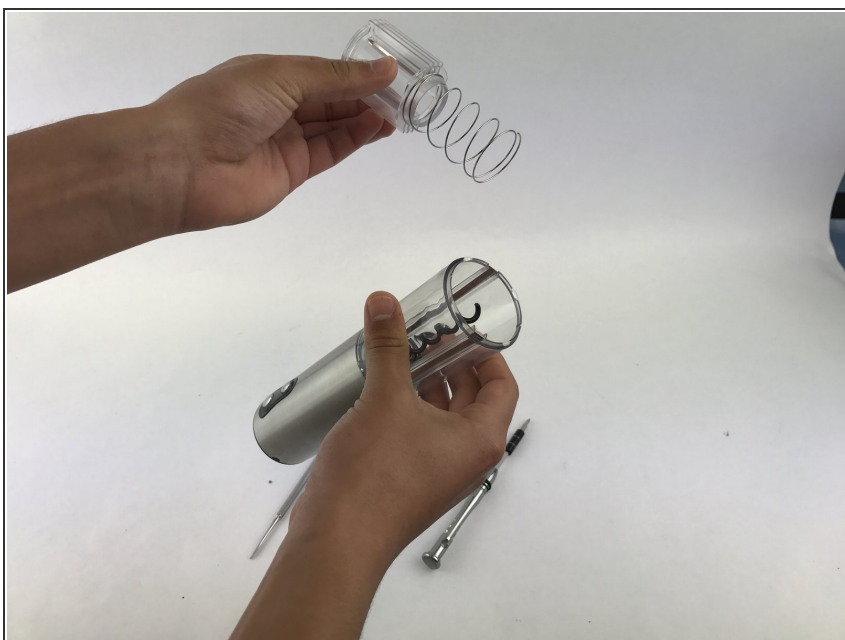
- [Metal Spudger](#) (1)
 - [J1 Screwdriver Bit](#) (1)
 - [iFixit Precision Bit Driver](#) (1)
-

Step 1 — Modal Rechargeable Wine Opener power button



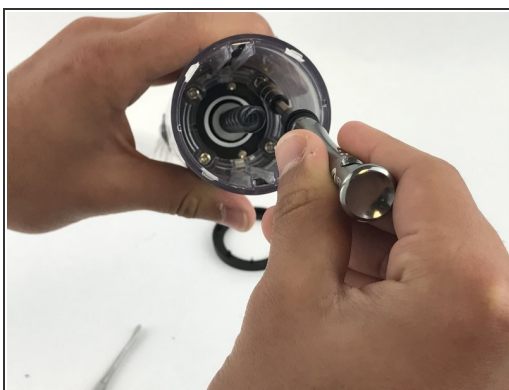
- Carefully place the spudger under the black cylindrical ring and pry it off the top.

Step 2



- Remove the spring
- Remove the spring guide as well to obtain clear access to the screws

Step 3



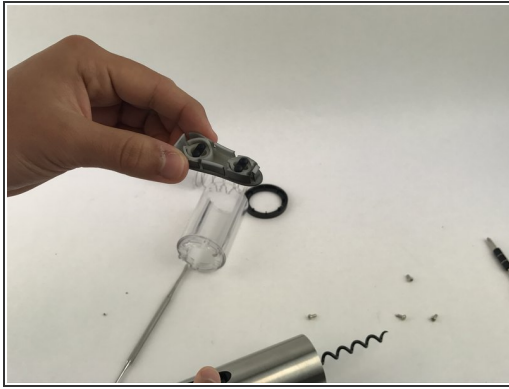
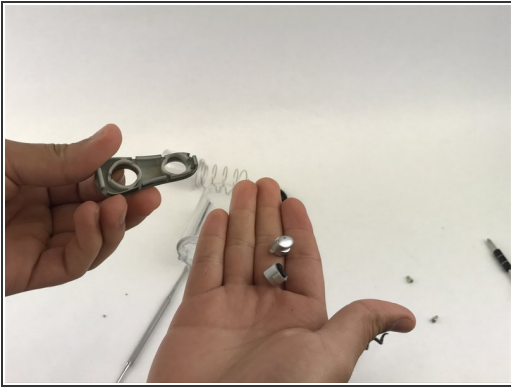
- Remove all four 4mm screws with a J1 Screwdriver
- Remove the clear cylindrical cap

Step 4



- Apply pressure to both of the springs on the surface near the corkscrew, releasing the button port.

Step 5



- Remove the malfunctioning buttons from the plastic frame.

To reassemble your device, follow these instructions in reverse order.