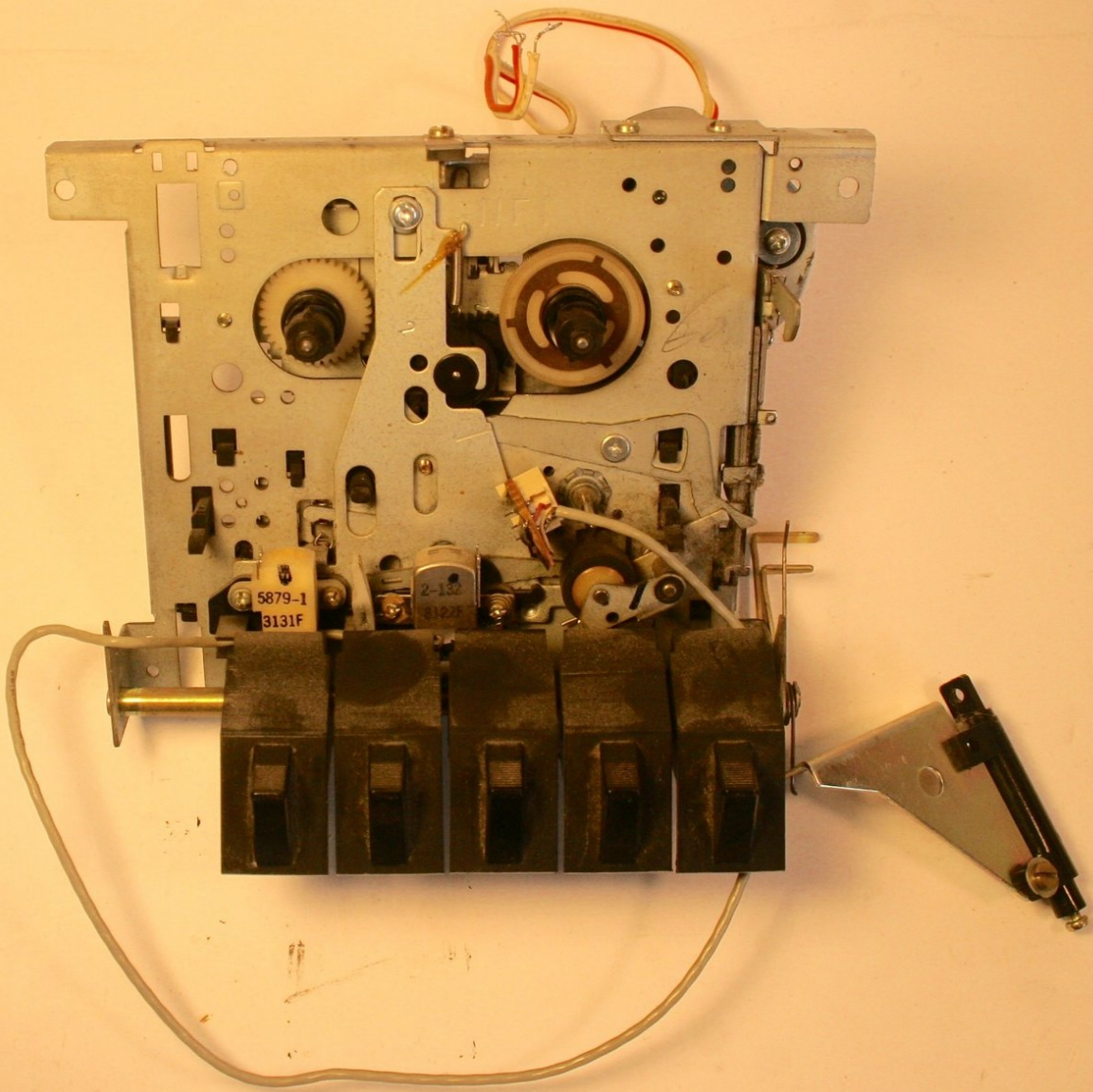




Montgomery Ward GEN-39500 Cassette Player Replacement (Left Side)

Written By: Dustin Platt



INTRODUCTION

This is a guide for replacing the cassette player on the left side of the unit.



TOOLS:

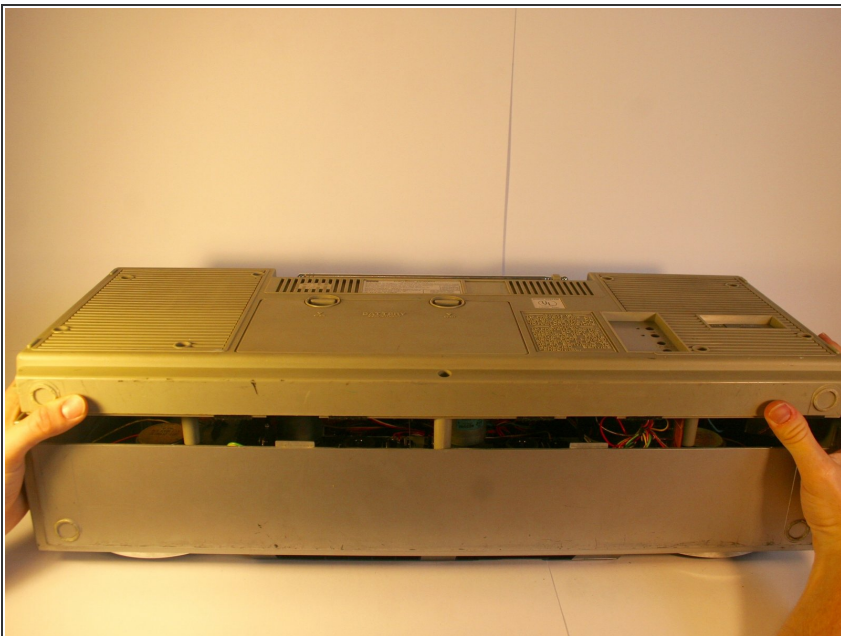
- [Phillips #2 Screwdriver](#) (1)
 - [Flathead Screwdriver](#) (1)
 - [Soldering Iron](#) (1)
-

Step 1 — Back Cover



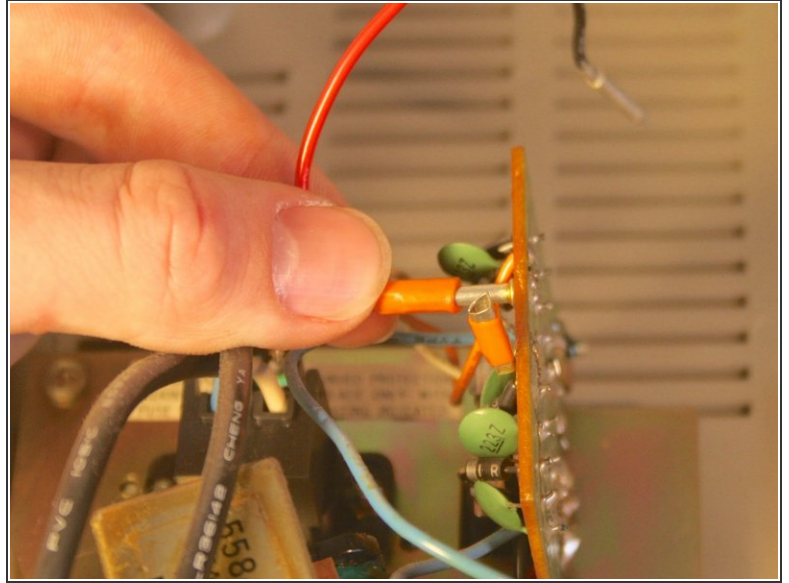
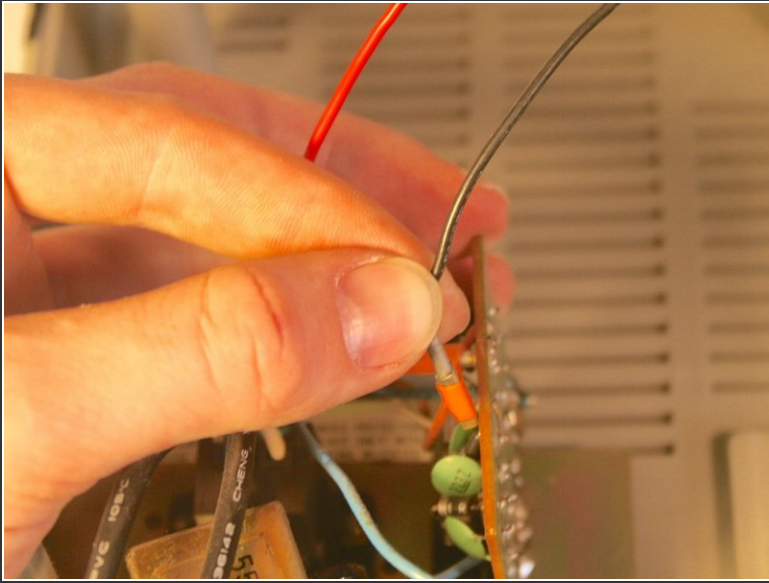
- Remove the nine 35 mm Phillips screws securing the back cover of the case.

Step 2



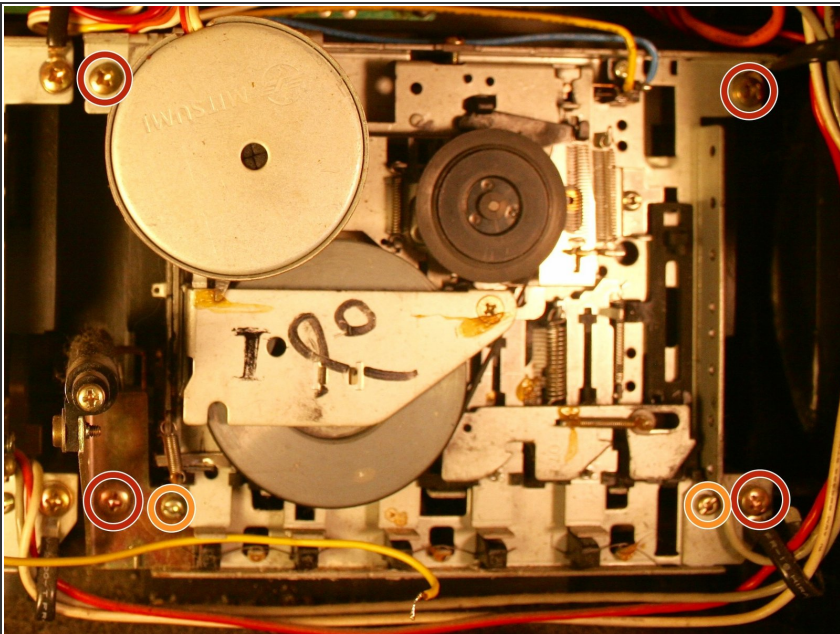
- Carefully remove the back cover.
- ⓘ Soldered wires connect electronics on the back cover to the internal electronics. Be careful not to break any connections.

Step 3



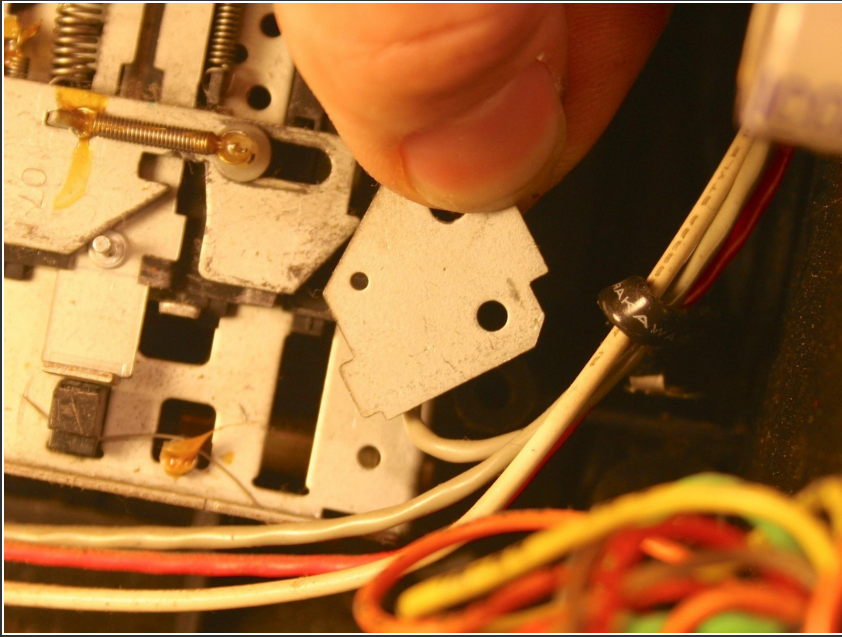
- Unplug the black and yellow wires connecting the power supply unit to the rest of the electronics:
- ⓘ This is not necessarily required. This step is to allow the back cover more movement as you work on the inside of the unit.

Step 4 — Cassette Player (Left Side)



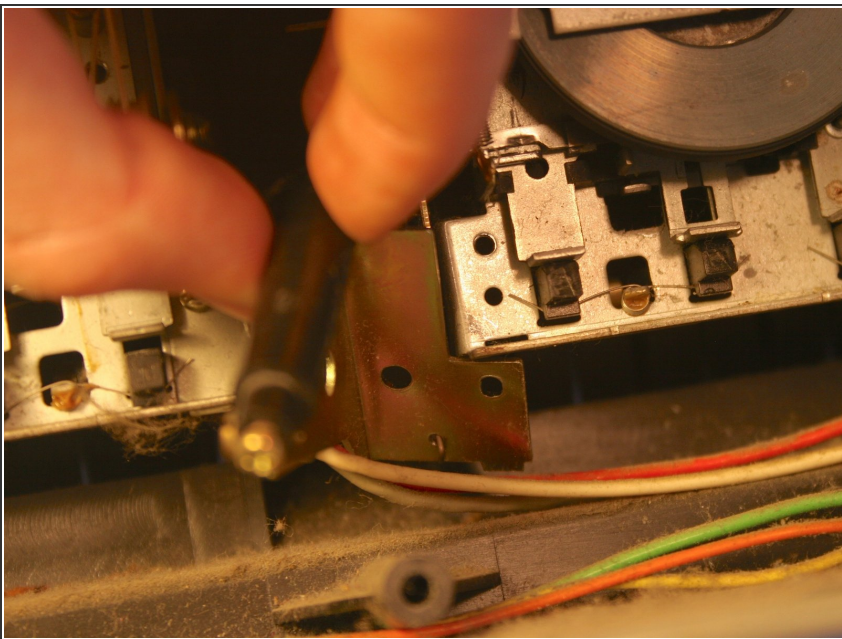
- Remove the following 6 screws:
 - Four 25 mm Phillips
 - Two 2.5 mm Flathead

Step 5



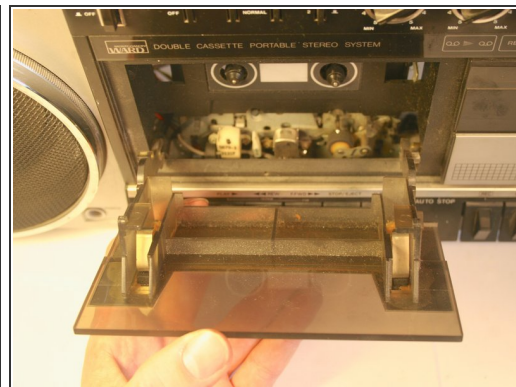
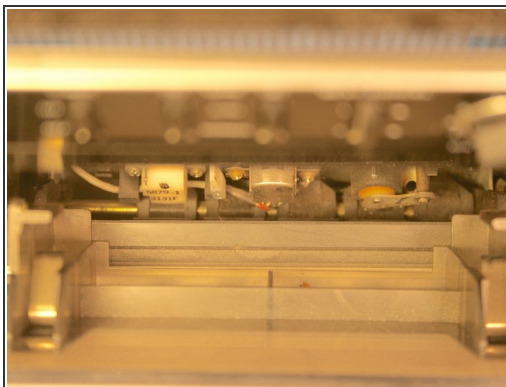
- Remove the small steel plate on the right-hand side.

Step 6



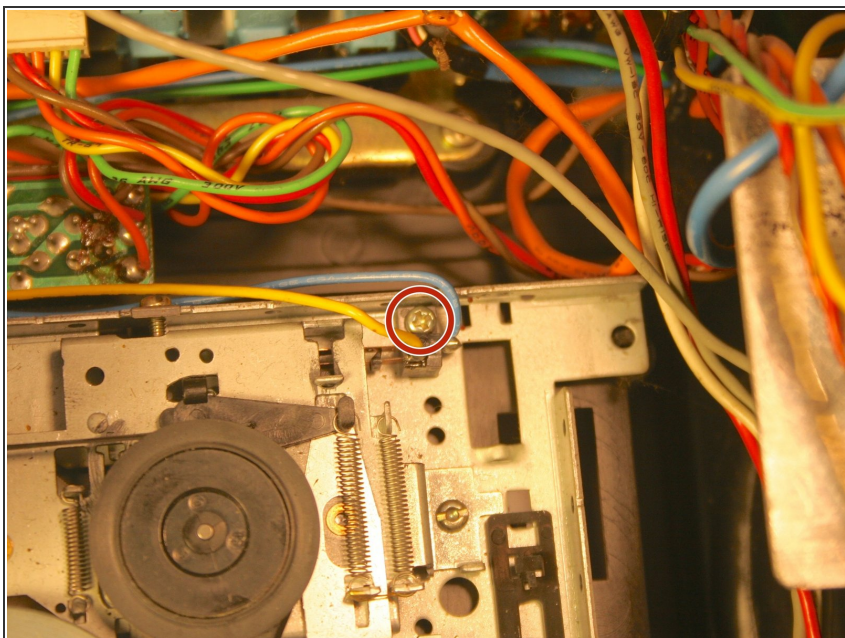
- Move the brass plate with attached pneumatic cylinder on the left-hand side.
- Detach the plate at the pneumatic cylinder and leave the plate attached to the torsional spring.

Step 7



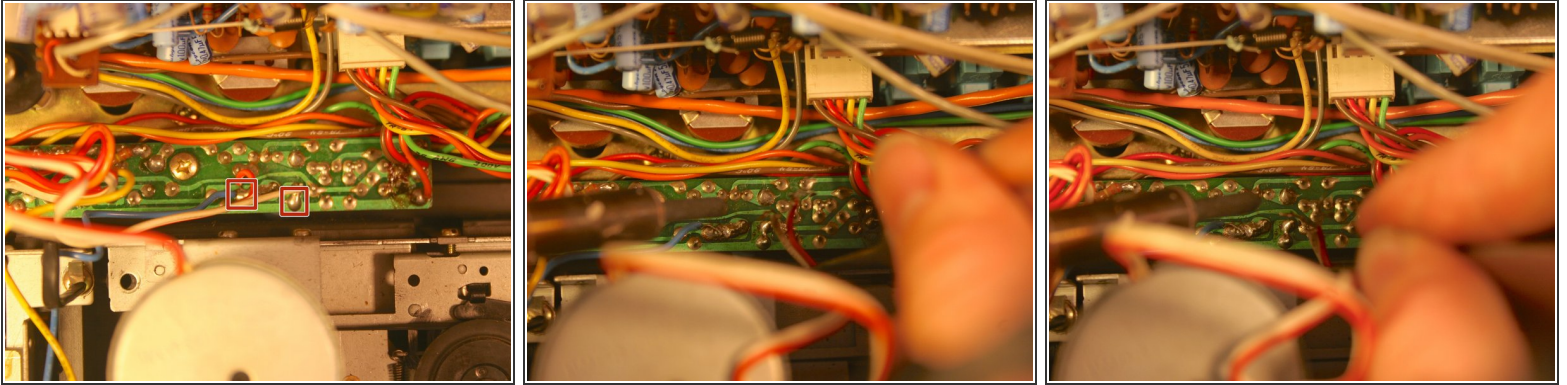
- Stand the unit up and press eject to open the door on the cassette player.
- Gripping the cassette player from the back, lift upwards on the door to unclip it from the bar around which it rotates. This may take some effort.

Step 8



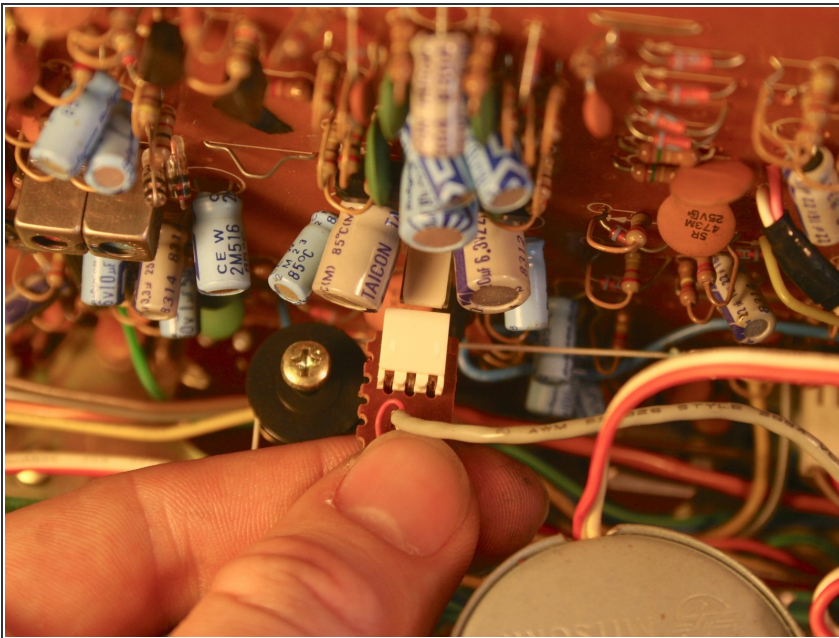
- Remove the 5 mm Phillips screw holding the blue and yellow wires in place.

Step 9



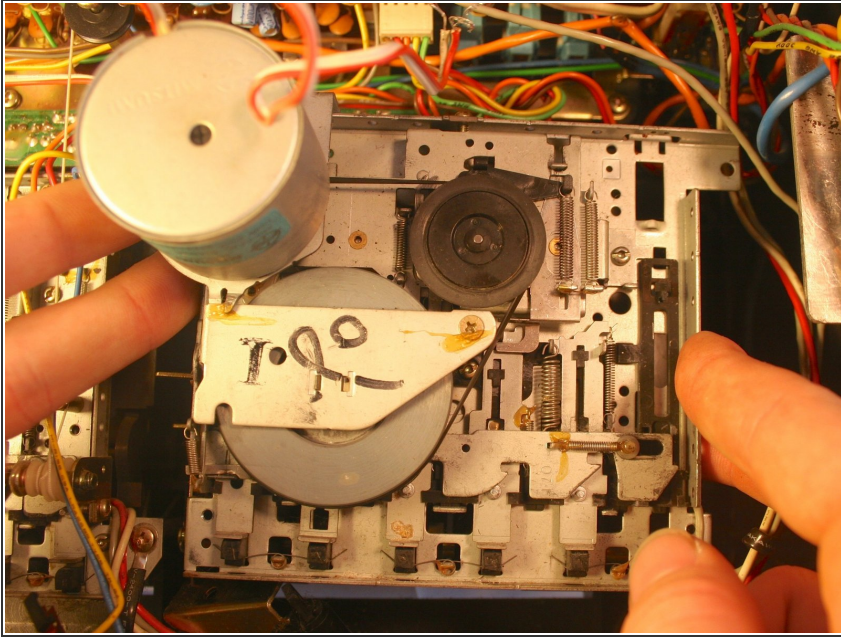
- Unsolder the red and white wires leading from the cassette player unit.

Step 10



- Unplug the grey wire leading from the cassette player.

Step 11



- Remove the cassette player.

To reassemble your device, follow these instructions in reverse order.