



# Montgomery Ward GEN-39500 Subwoofer Replacement

Written By: Dustin Platt



## INTRODUCTION

The subwoofer produces the lower frequencies of sounds being played. This guide will show you how to replace the subwoofer in case the cone of the speaker is damaged.



### TOOLS:

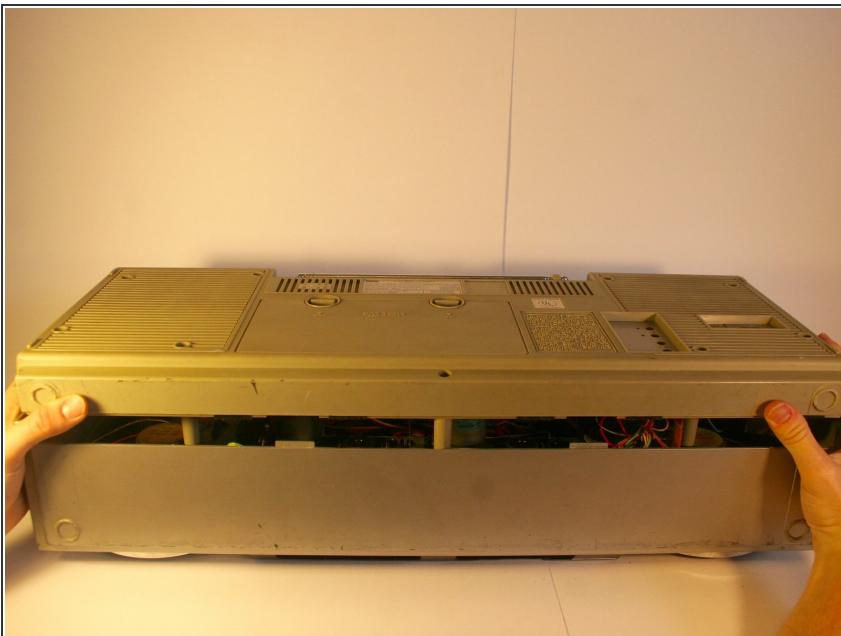
- [Phillips #2 Screwdriver](#) (1)
  - [Soldering Iron](#) (1)
-

## Step 1 — Back Cover



- Remove the nine 35 mm Phillips screws securing the back cover of the case.

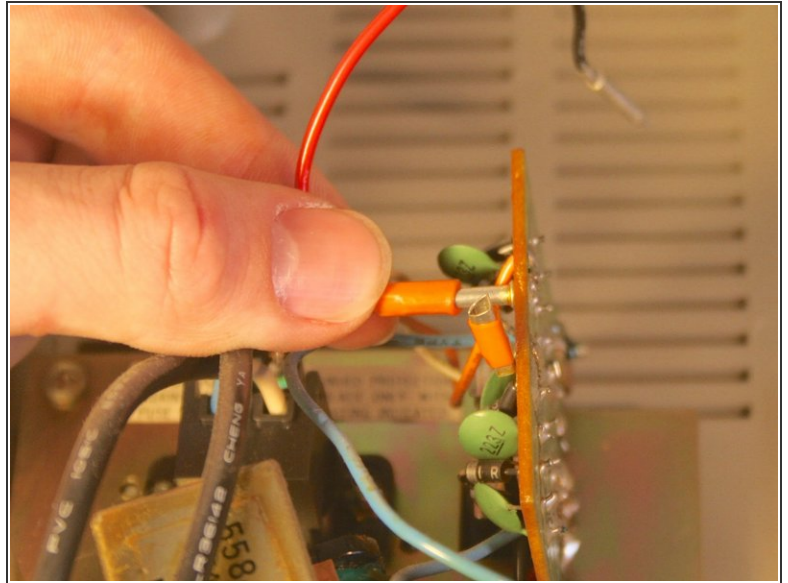
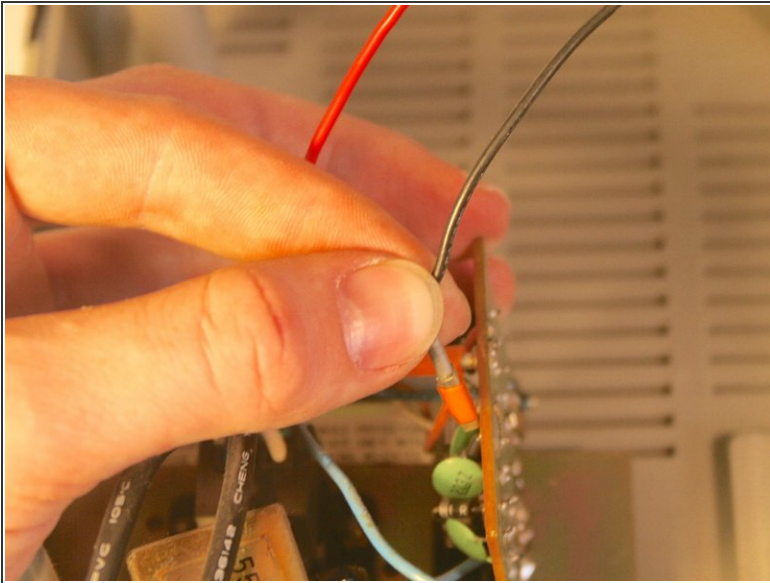
## Step 2



- Carefully remove the back cover.
- ⓘ Soldered wires connect electronics on the back cover to the internal electronics. Be careful not to break any connections.

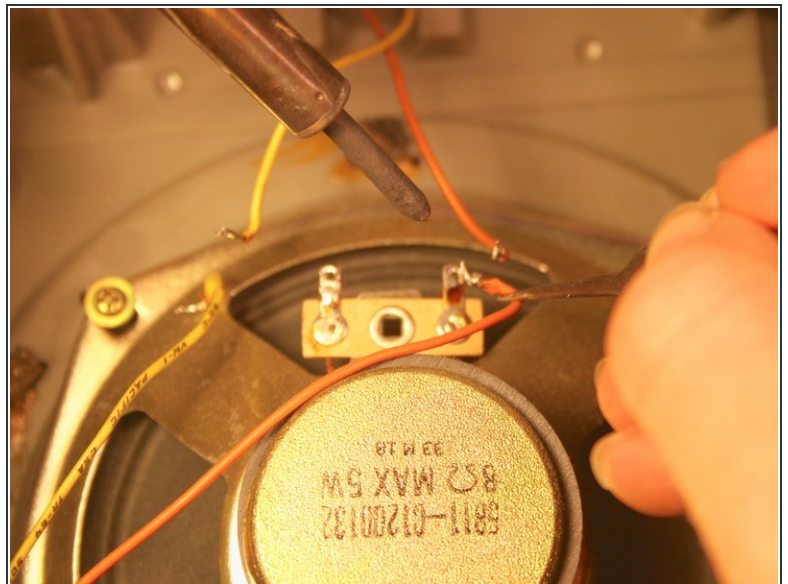
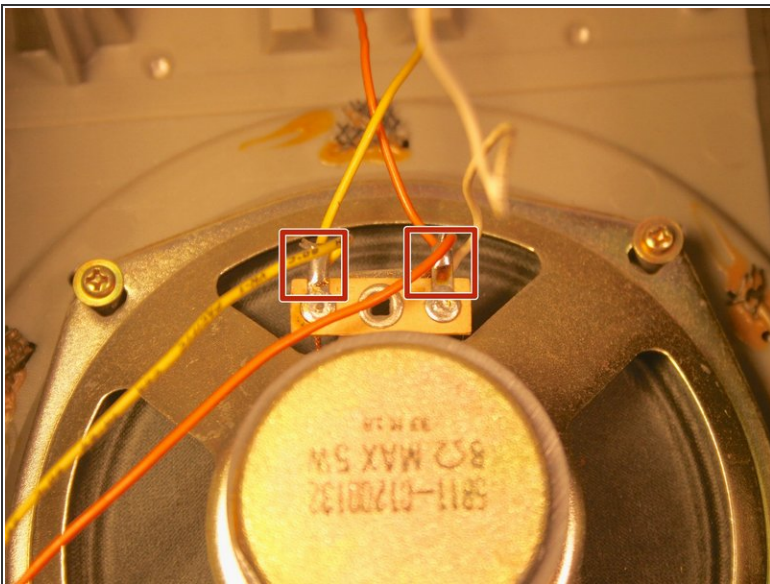


### Step 3



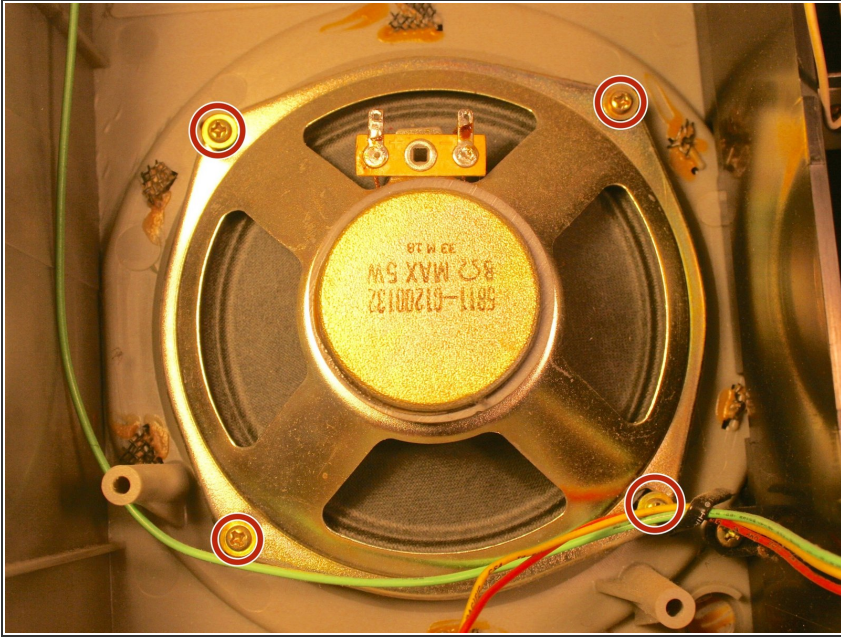
- Unplug the black and yellow wires connecting the power supply unit to the rest of the electronics:
- ⓘ This is not necessarily required. This step is to allow the back cover more movement as you work on the inside of the unit.

### Step 4 — Subwoofer



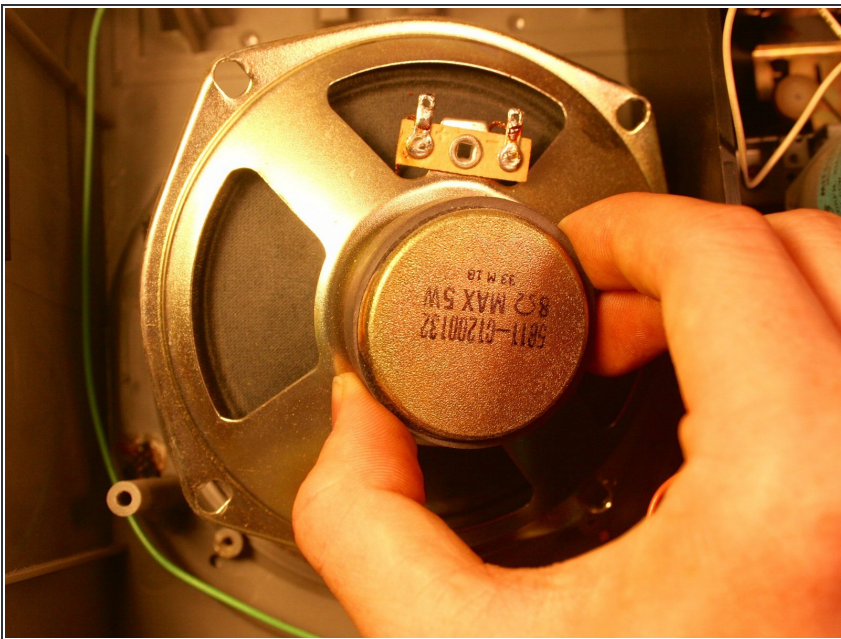
- Unsolder the wires leading to and from the subwoofer.

## Step 5



- Unscrew the four 12.5 mm Phillips screws holding the subwoofer in place.
- ⓘ One of the screws holds down a metal cable organizer. For better cable organization after reassembly keep track of this organizer.

## Step 6



- Remove the subwoofer.
- ⓘ The process is the same for both sides.

To reassemble your device, follow these instructions in reverse order.