



# Mophie PowerStation 5X Teardown

Open the Mophie Power Station 5X for teardown and repair purposes

Written By: Larry Chen



# INTRODUCTION

Open and disassemble the power pack for repair purposes. More details:

<https://www.facebook.com/notes/larry-che...>

---

## TOOLS:

- [Metal Spudger Set](#) (1)
  - [flat head & philips screw driver](#) (1)
-

## Step 1 — Mophie PowerStation 5X Teardown



- The device.

## Step 2



- Open the device using a flat head screwdriver and pry the lid up from the middle carefully.
- Use a metal spudger along the side to open the lid.
- Don't push inside too much.
- This will damage the metal case.
- The lid is glued to the plastic in the front.

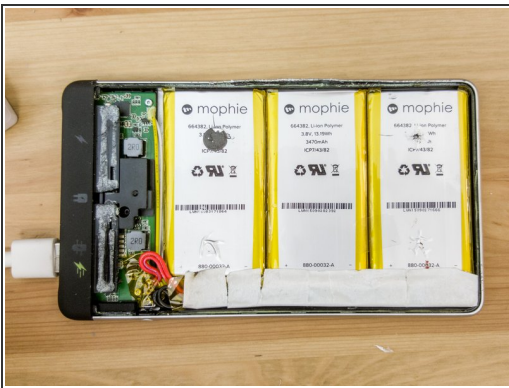


## Step 3



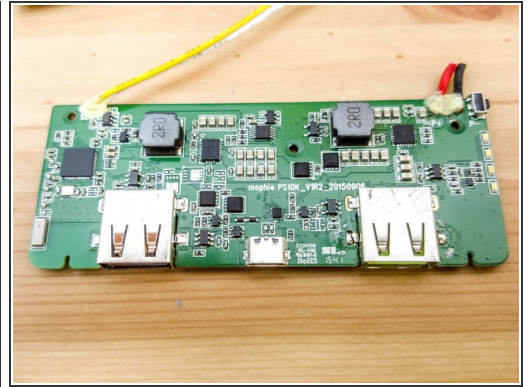
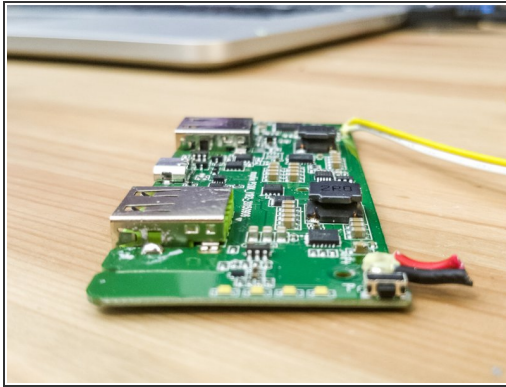
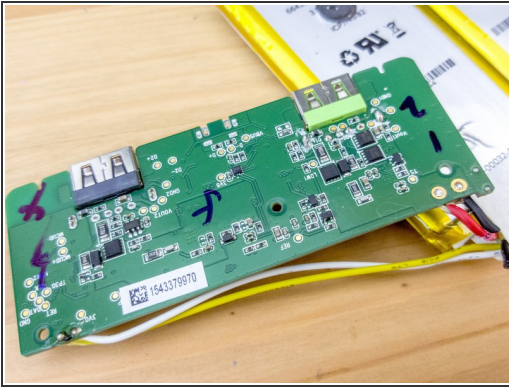
- Disconnect the battery pack.
- If you're having problems with the device, disconnect the battery and then reconnect it. That solved the no output problem for me.

## Step 4



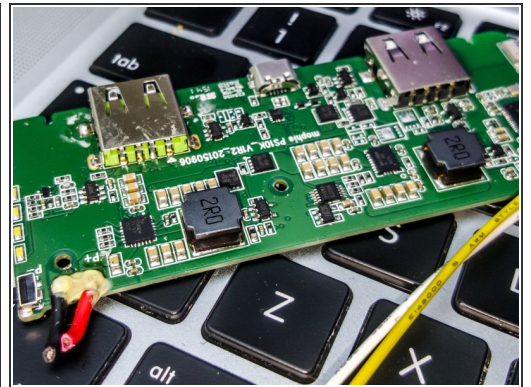
- Photos of interior.
- Battery is lightly glued.

## Step 5



- [More images](#)

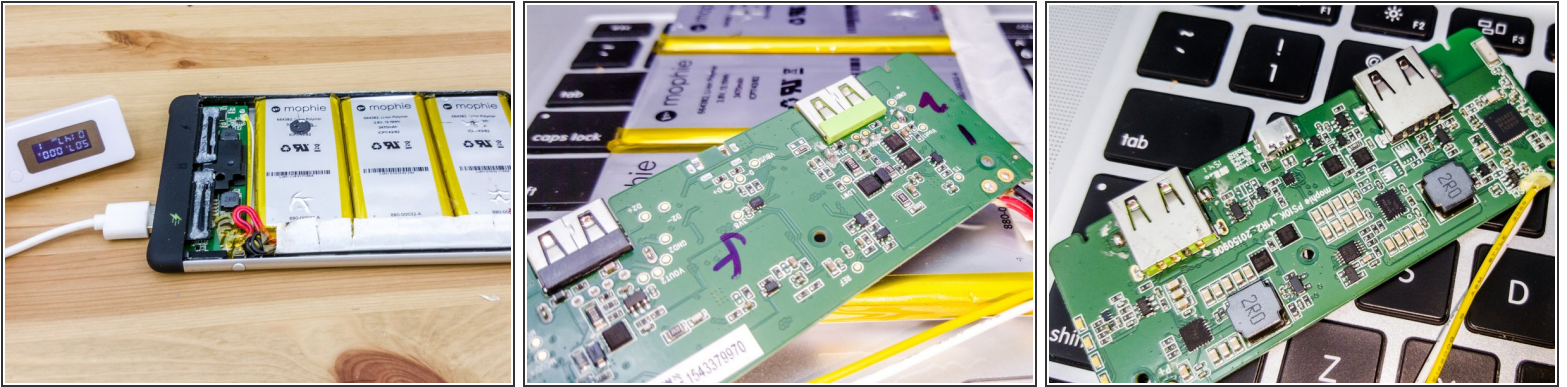
## Step 6



- [More photos](#)

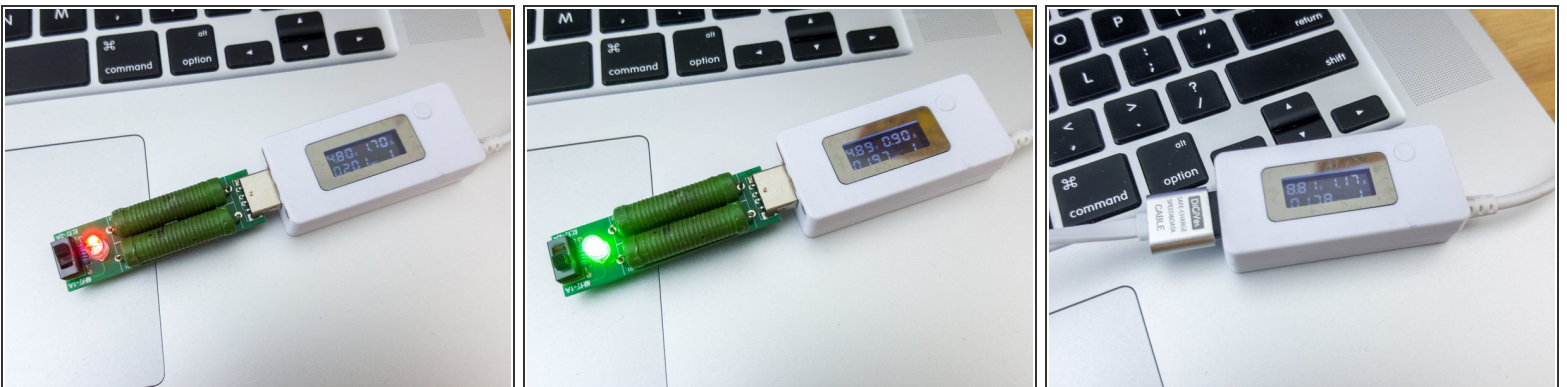


## Step 7



- [More images](#)

## Step 8



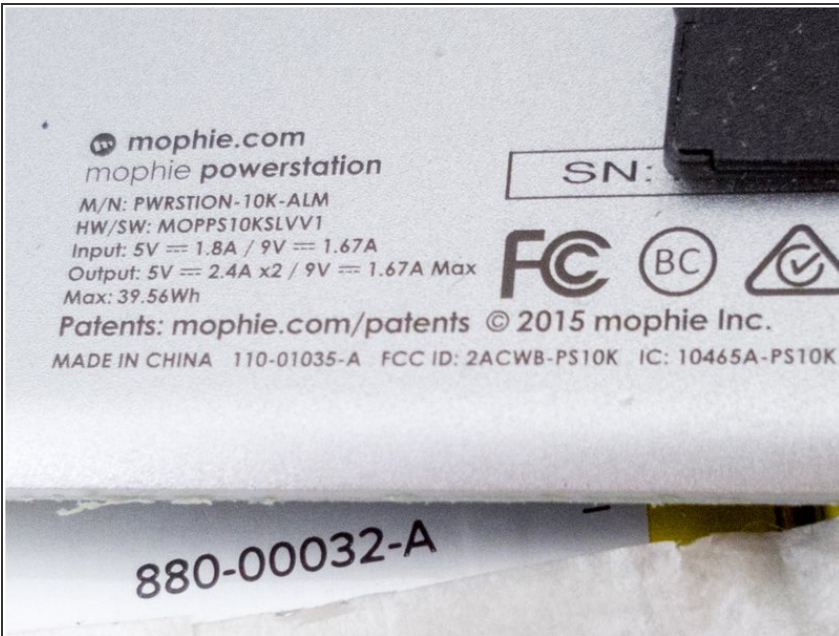
- Power and current measurements. Red light is 2A load, green is 1A load. Max. power draw of Galaxy Note5 connected to fastcharge port is 1.62A.
- Charge current measured at 5V and 9V.

## Step 9



- simultaneous input and output supported.

## Step 10



- ratings