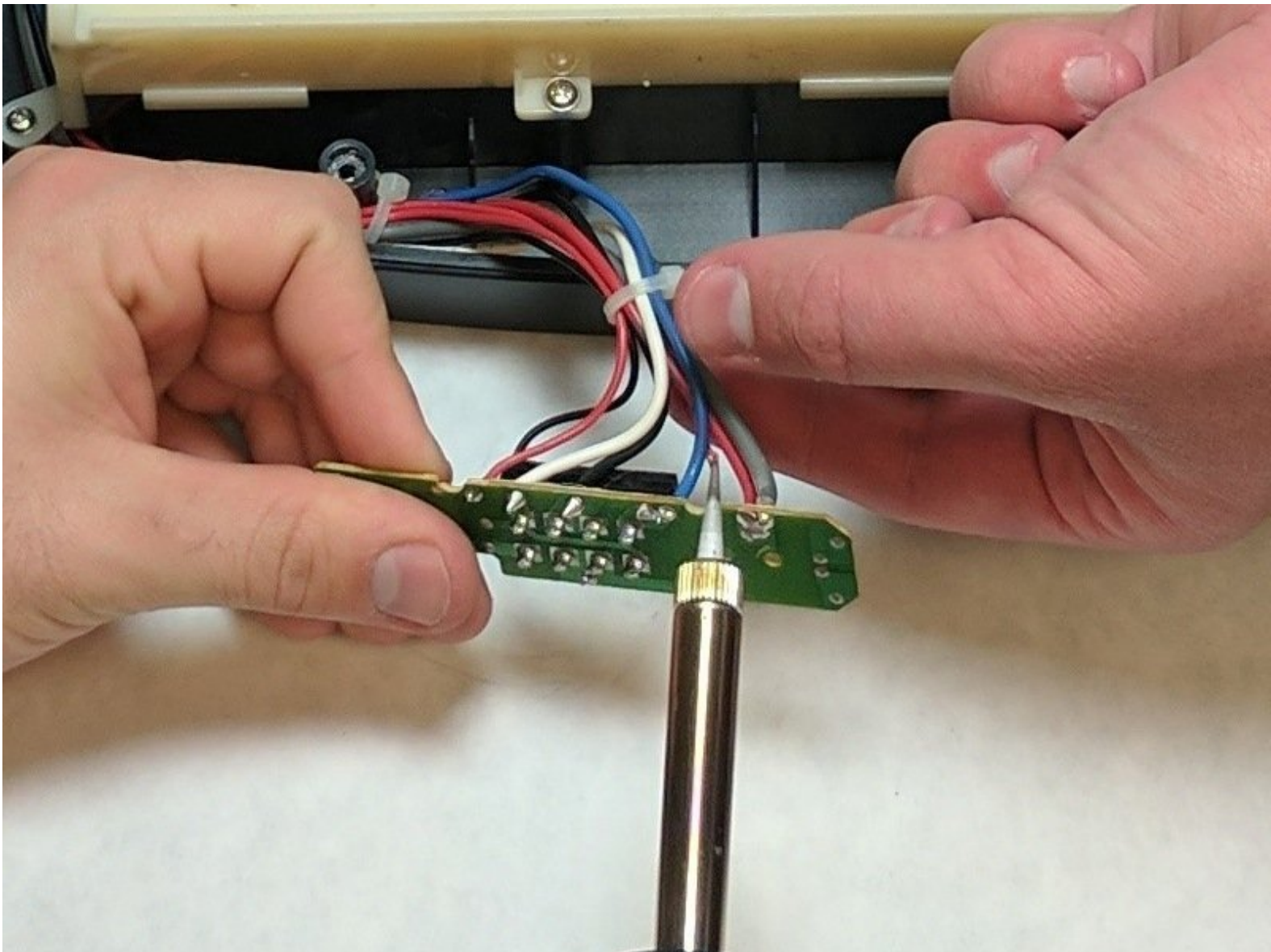




Motherboard Replacement

This guide will show you how to replace the motherboard in the Fellowes T7CM.

Written By: John Wisthoff



INTRODUCTION

This guide will show you how to replace the motherboard in the Fellowes T7CM.



TOOLS:

- [Phillips #000 Screwdriver](#) (1)
- [T6 Torx Screwdriver](#) (1)
- [Soldering Workstation](#) (1)



PARTS:

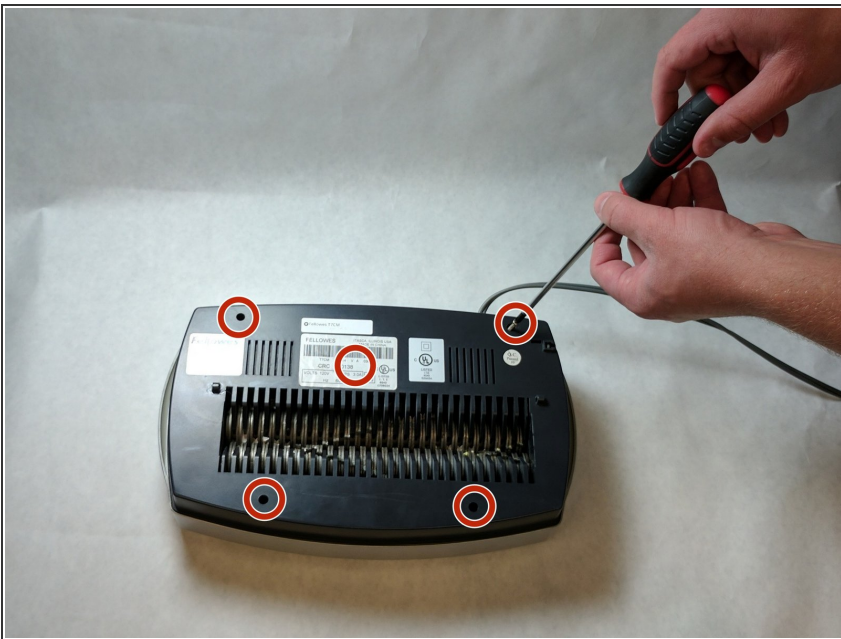
- [three way Switch](#) (1)
- [Mother Board Fellowes T7CM](#) (1)

Step 1 — Fellowes T7CM Casing and Trigger Replacement



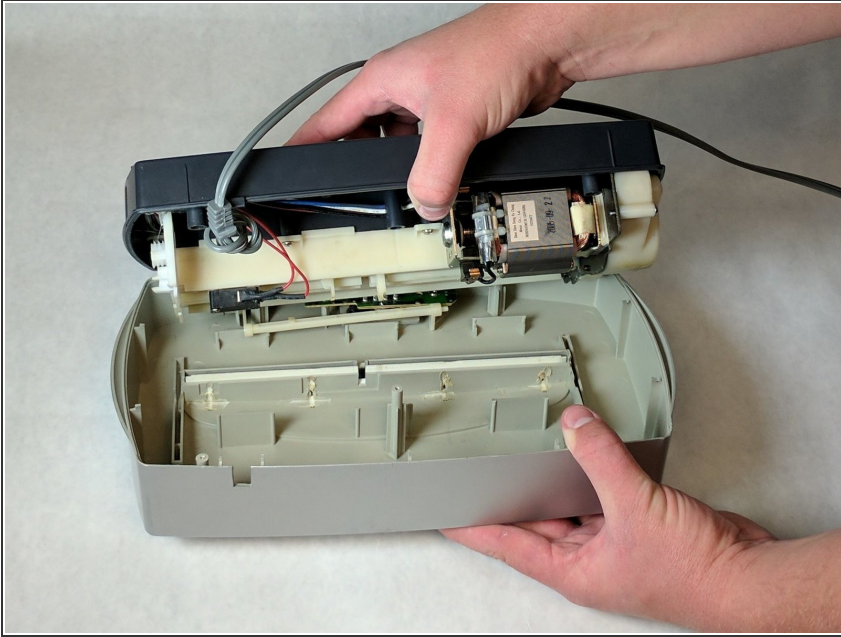
- Check to make sure the shredder is not plugged in to any electrical outlet.
- Remove the shredder from the catch basket and place the silver side down on a flat surface.
- Place the catch basket aside as you will not be needing it for the rest of the disassembly.

Step 2



- Flip the shredder silver side down and place on a flat even surface.
- Remove the manufacturer's label in order to gain access to the hidden screw hole.
- Locate all five of the case screws and remove them with a Phillips-Head screwdriver. The screws are located within the five marked circles in the photo. The size of the screws are 18 mm in length and head diameter of 5 mm.

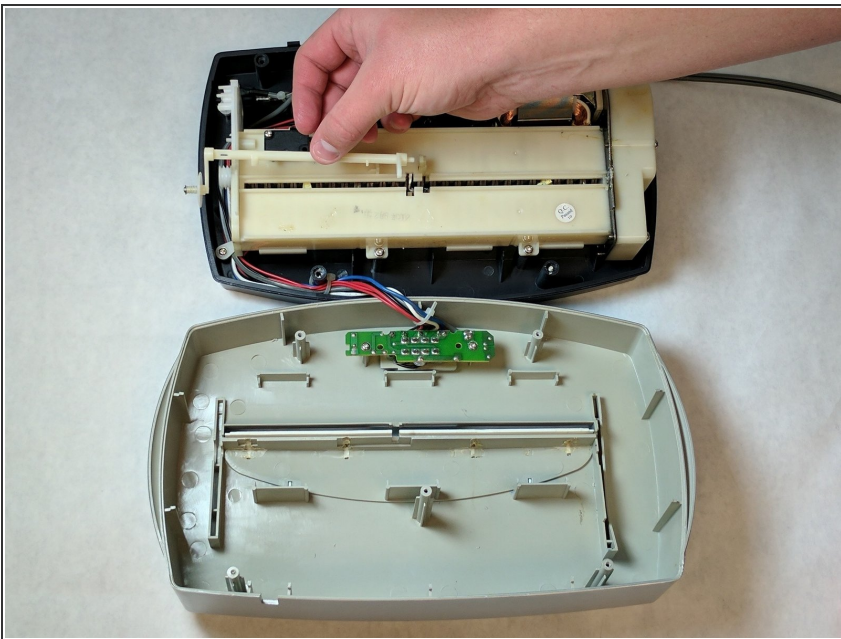
Step 3



- Once all of the screws are removed, slowly pull apart the casing.
- If the casing is not separating, gently wiggle the top part of the casing from the bottom part of the casing.

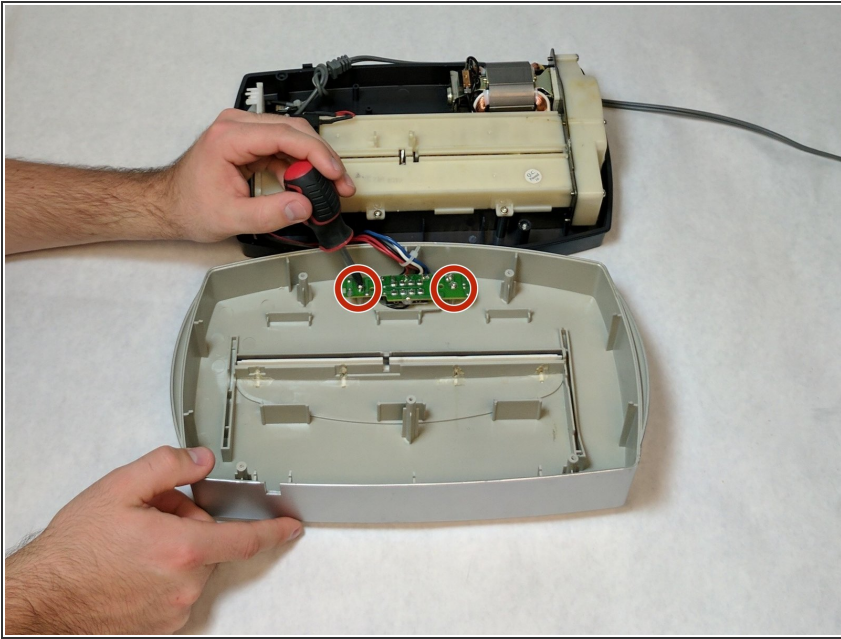
⚠ Use Caution during this procedure to prevent from damaging any of the internal parts.

Step 4



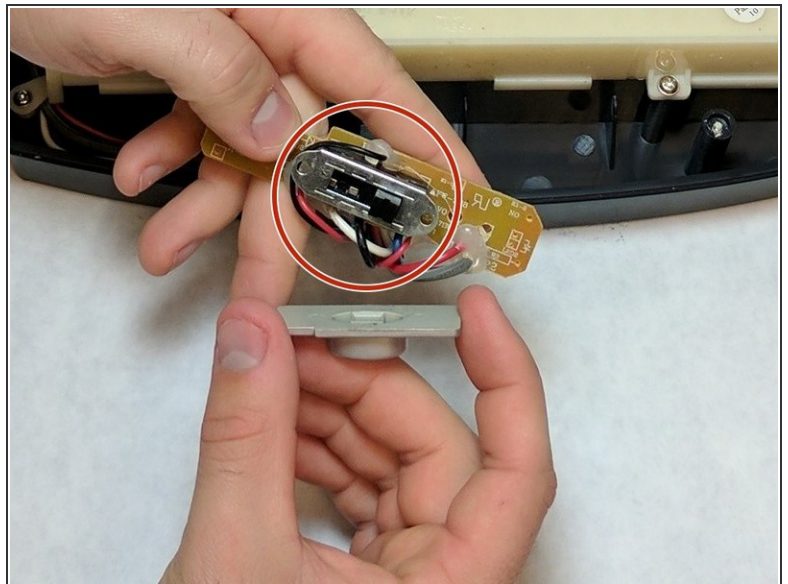
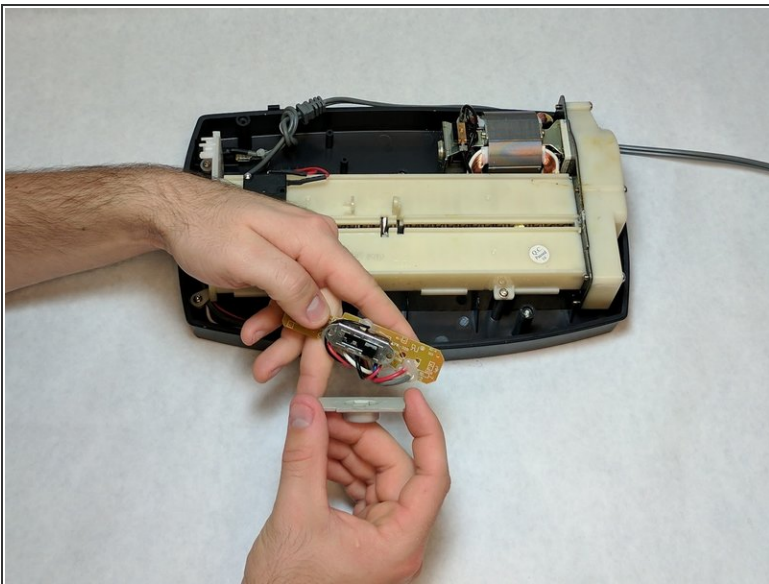
- Open the casing as shown to prevent tangling or damaging the wires.
- Take note to how the trigger assembly is attached before removal.
- The trigger assembly is one part and should come off all together with little to no force applied.
- Remove the trigger assembly.

Step 5 — On, Off, Reverse Switch



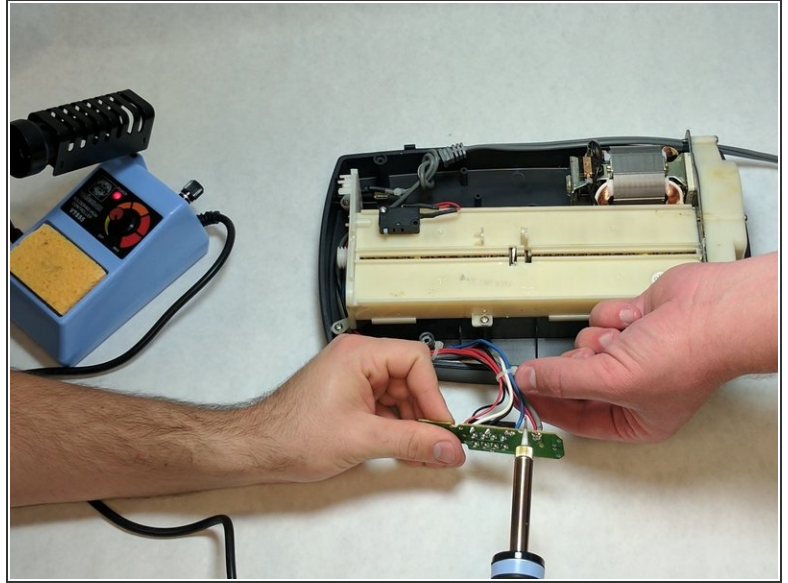
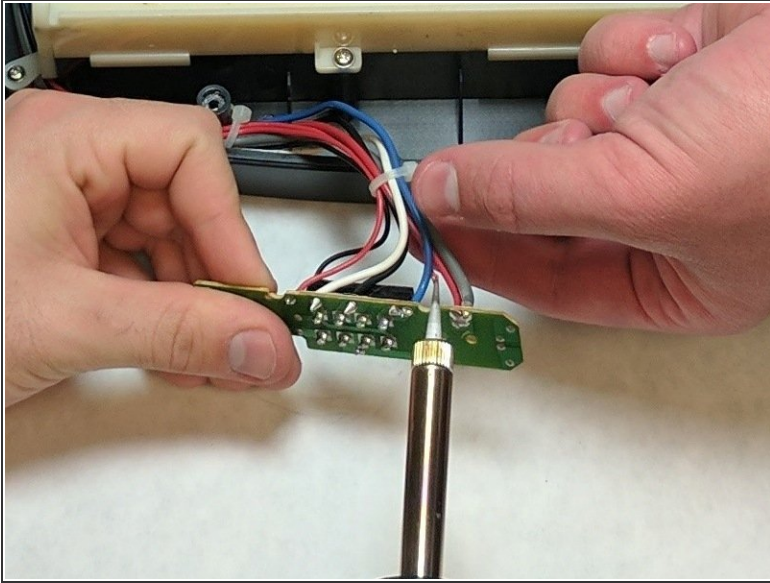
- Unscrew both of the screws from the circuit board of the switch . Lift the circuit board away from the device. The screw length is 10 mm and the head diameter is 6 mm.

Step 6



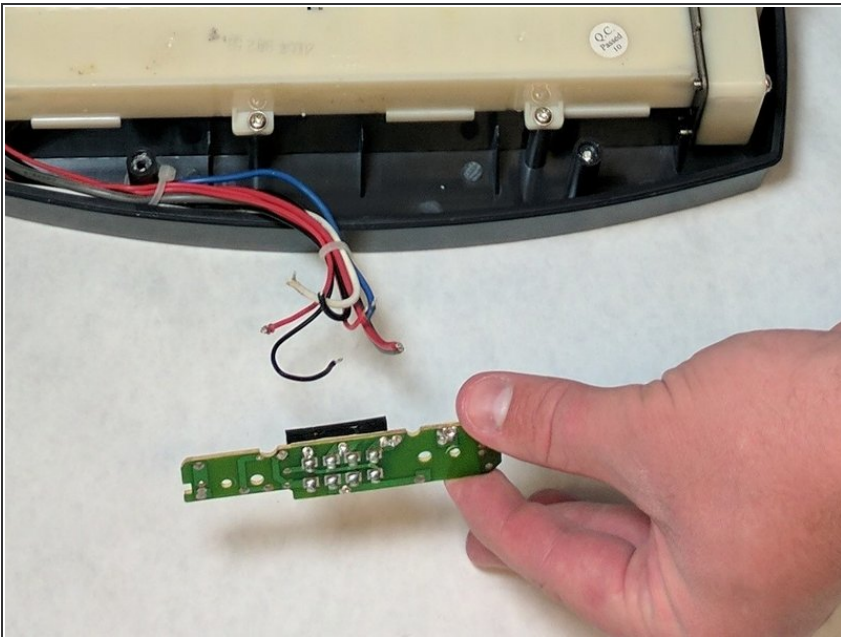
- Remove the plastic switch case.
- After the plastic case is removed, the switch can be replaced.
- During the switch replacement, be careful of the springs that are held in side. They can potentially come loose and get lost.

Step 7 — Motherboard



- Desolder the wires from the motherboard. Learn more about soldering components [here!](#)

Step 8



- After all of the wires are removed, the motherboard can be lifted off and removed with ease.

To reassemble your device, follow these instructions in reverse order.