



Moto G6 Play SIM Card Tray Replacement

How to remove or replace the SIM card tray in a Motorola Moto G6 Play.

Written By: Tarun Thiruma



INTRODUCTION

Use this guide to remove the SIM card tray in your Motorola Moto G6 Play.



TOOLS:

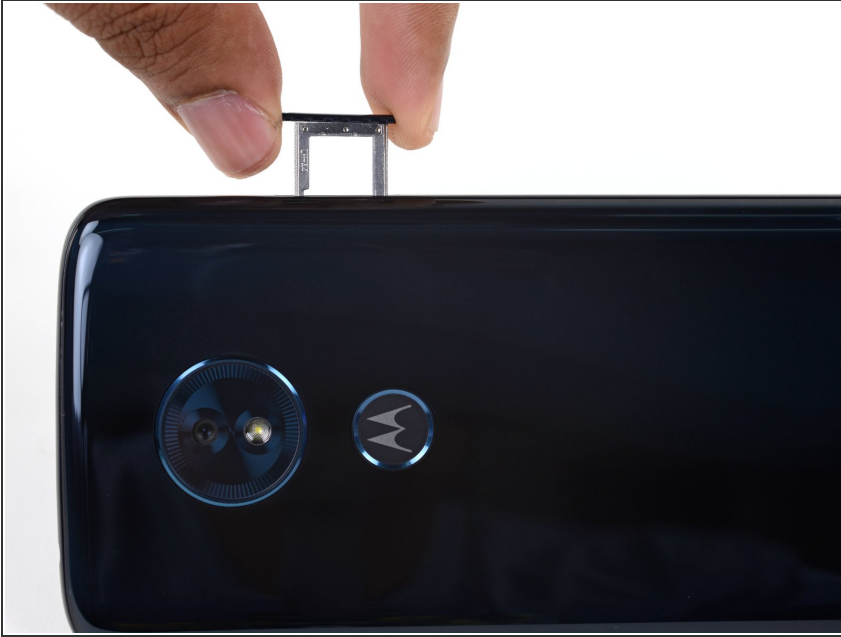
- [SIM Card Eject Tool](#) (1)
-

Step 1 — Remove the SIM Card Tray



- Insert a paperclip or SIM card eject tool into the small hole in the SIM card tray on the upper right edge of the phone.
- Press the tool into the hole to eject the tray.
- ⓘ This may require a significant amount of force.
- ⓘ The ejection mechanism is deeper in this phone than others and may require a longer SIM card eject tool. If your tool isn't long enough to reach the mechanism, try using an unfolded paperclip instead.

Step 2



- Remove the SIM card tray.
- ★ When reinserting the SIM card, ensure that it is in the proper orientation relative to the tray.

To reassemble your device, follow the above steps in reverse order.

Repair didn't go as planned? Try some [basic troubleshooting](#), or ask our [Moto G6 Play Answers Community](#) for help.