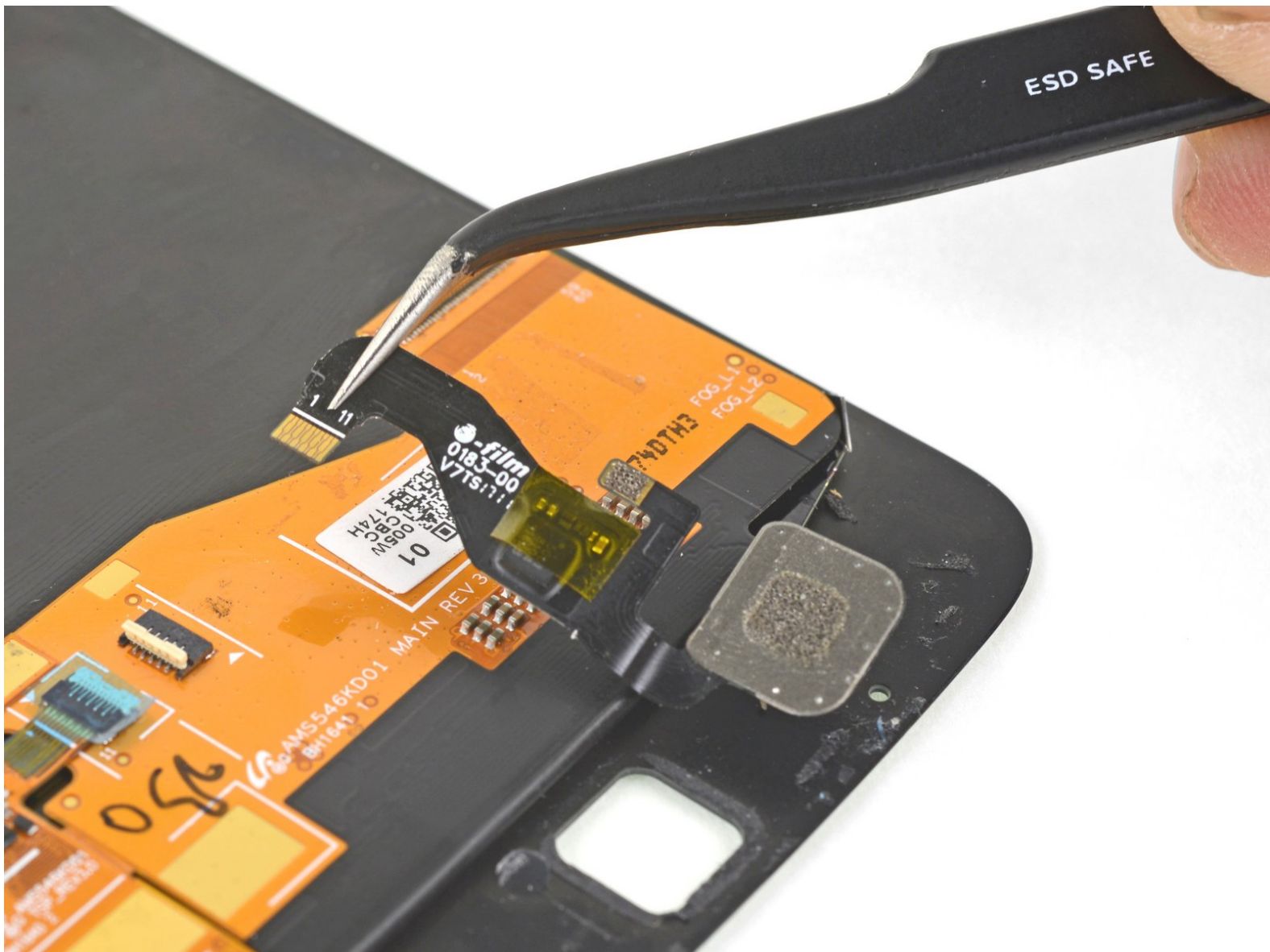




# Moto Z Fingerprint Sensor Replacement

Prerequisite guide only. Removes the fingerprint sensor from the Motorola Moto Z.

Written By: Arthur Shi



---

# INTRODUCTION

Follow this guide to remove the fingerprint sensor/home button from the Moto Z.

---



## TOOLS:

- [iOpener](#) (1)
  - [Suction Handle](#) (1)
  - [iFixit Opening Picks set of 6](#) (1)
  - [Tweezers](#) (1)
  - [Spudger](#) (1)
-

## Step 1 — Display Assembly

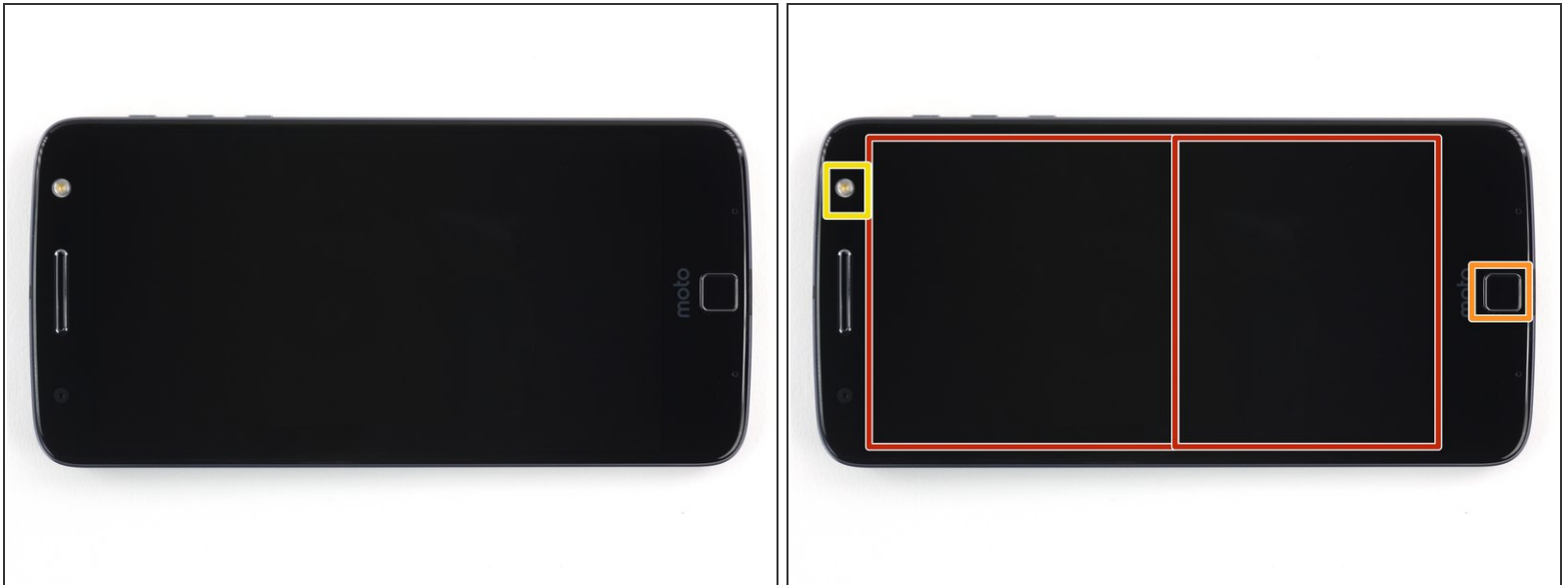


- [Heat an iOpener](#) and apply it to the left edge of the phone for at least 90 seconds.

⚠ A hair dryer, heat gun, or hot plate may also be used, but be careful not to overheat the phone—the OLED display and internal battery are both susceptible to heat damage.

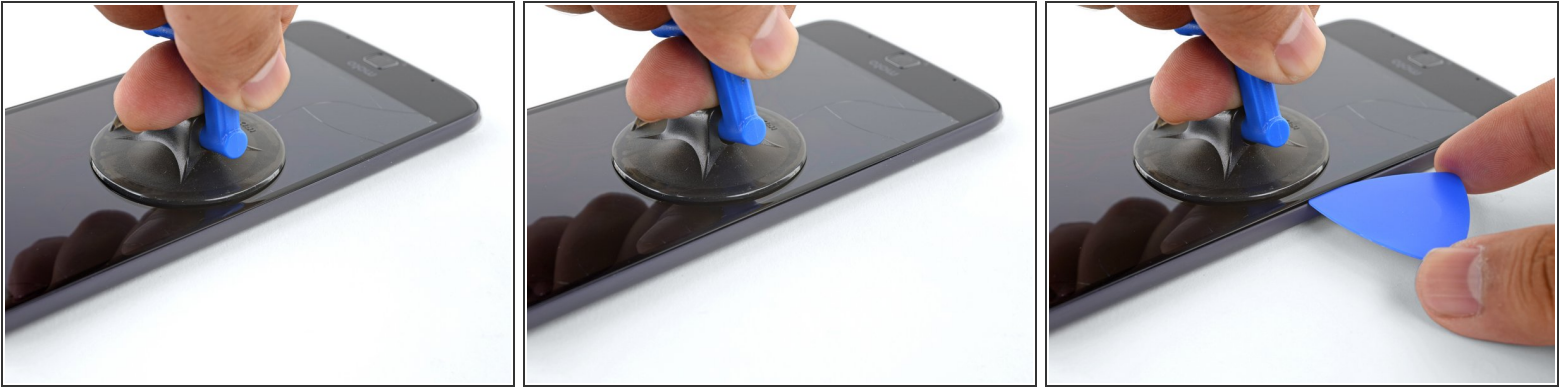
ⓘ As you're waiting for the adhesive to soften, move on and read the following step to get an idea of where to pry.

## Step 2




- In the following steps you will be cutting through the adhesive around the edge of the display assembly.
- To avoid damage, do not cut in the following areas:
  - The OLED panel
  - The home button
  - The flash unit

### Step 3




- Apply a suction cup as close to the heated edge as possible.
- Lift on the suction cup and insert the tip of an opening pick into the gap.

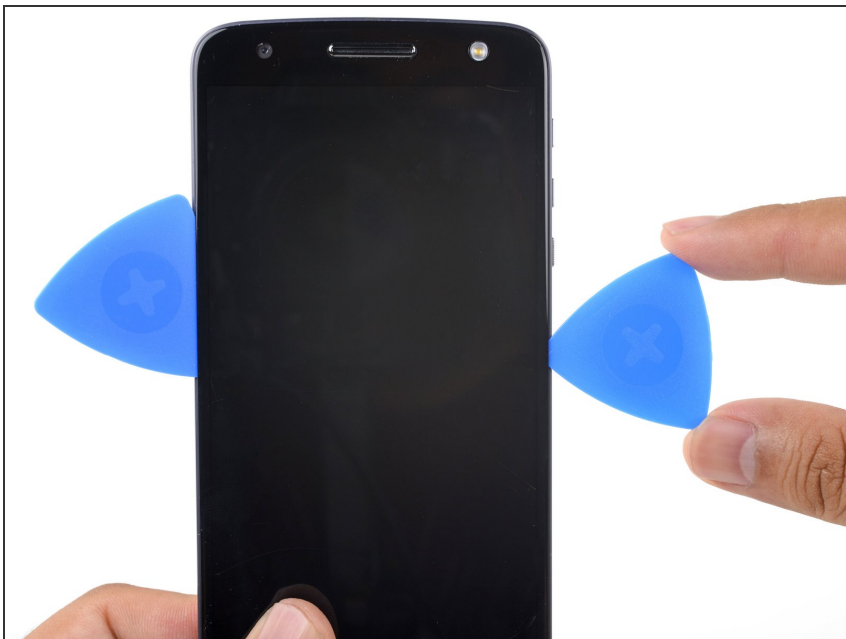
 Do not insert the pick more than 1/16" (1.5 mm). Over-inserting the pick may damage the OLED panel.

### Step 4



- Carefully slide the tip of the opening pick down and up the side of the phone, making sure not to cut deeper than 1/16" (1.5 mm).
-  As you run the pick along the side, you will feel the tip of the pick press against the edge of the OLED panel. That is as far as the pick should go without damaging the panel.
- Once you have separated the adhesive, leave an opening pick in the side to keep the adhesive from resealing.

## Step 5



- Repeat the heating, lifting, and cutting steps for the remaining long edge of the phone.

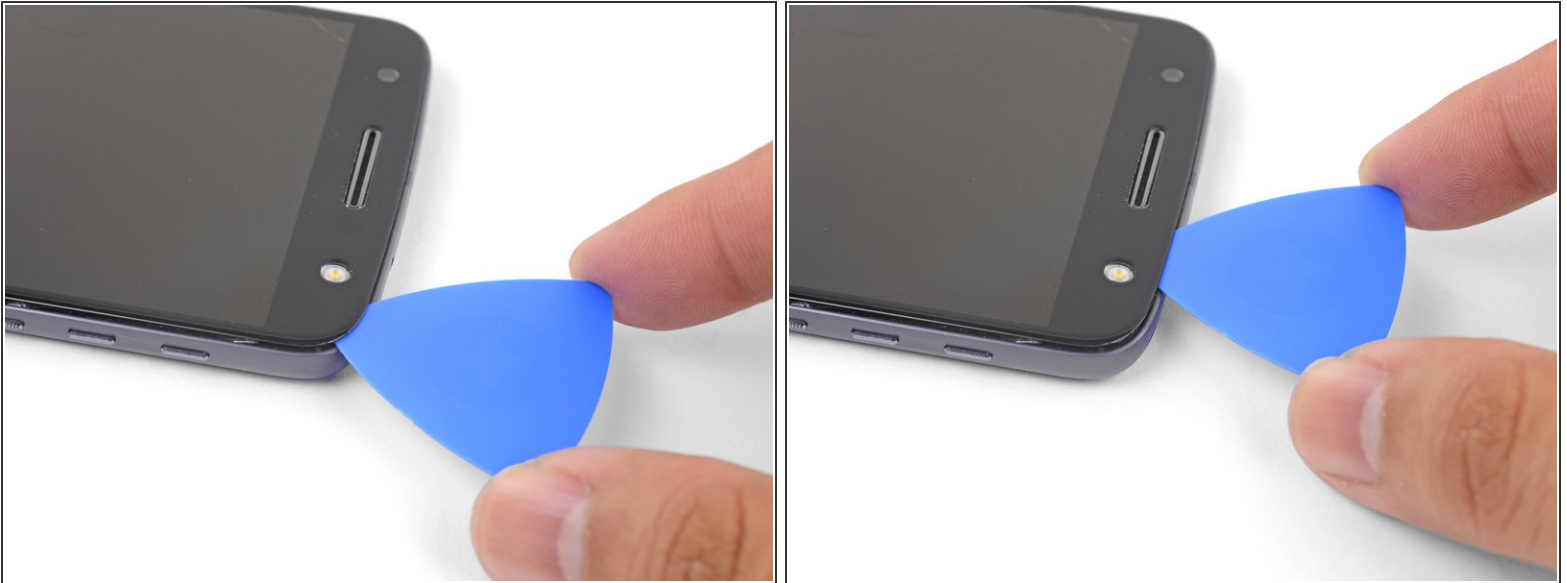
## Step 6




- [Apply a heated iOpener](#) to the top edge of the phone for at least 90 seconds.



## Step 7

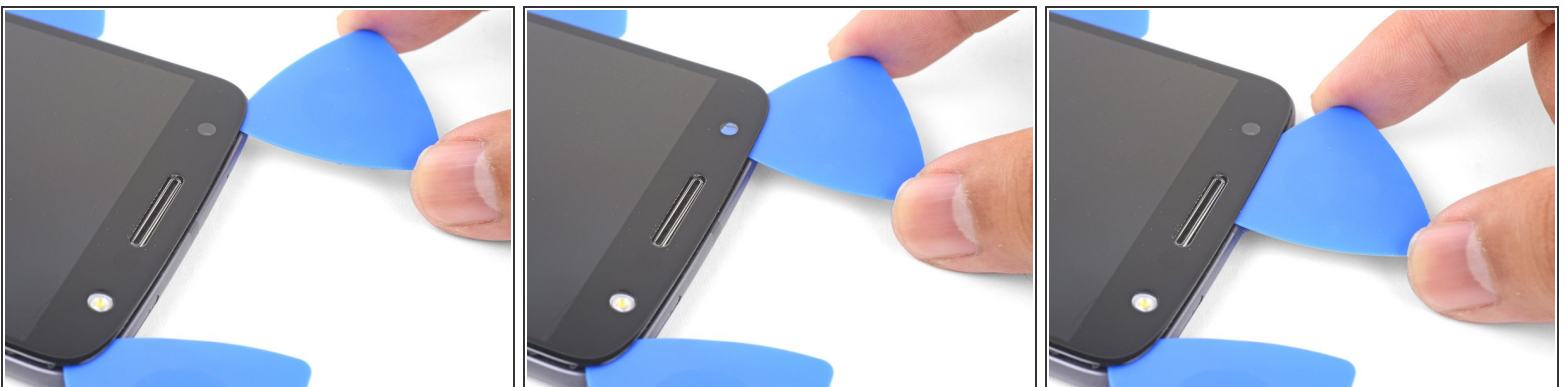


- Insert an opening pick into the flash side corner of the phone and carefully slice around the flash unit.

 Do not insert the pick more than 1/16" (1.5 mm) into the edge.

- Once you are done cutting, leave the pick in the corner to prevent the adhesive from resealing.

## Step 8



- Insert an opening pick into the remaining top corner of the phone.
- Carefully slice through the adhesive across the top of the phone.

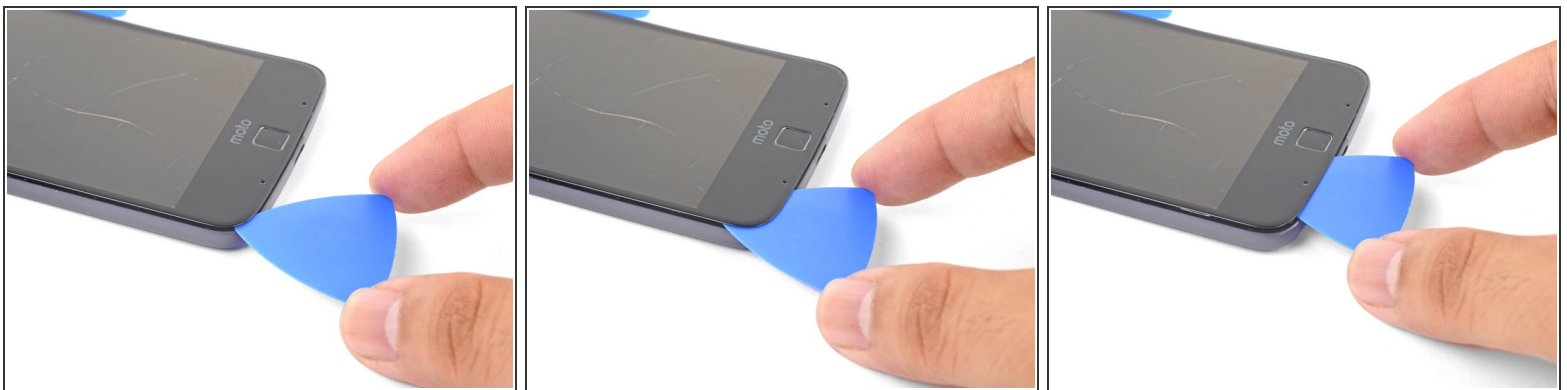
 Do not insert the pick beyond 1/2" (12.5 mm).

## Step 9



- Apply a heated iOpener to the bottom edge of the phone for at least 90 seconds.

## Step 10



- Insert an opening pick into a bottom corner and slice towards the home button, stopping before you reach it.
- Once you're done with the corner, leave a pick in place to prevent the adhesive from sealing.
- Repeat the process for the other bottom corner.



## Step 11



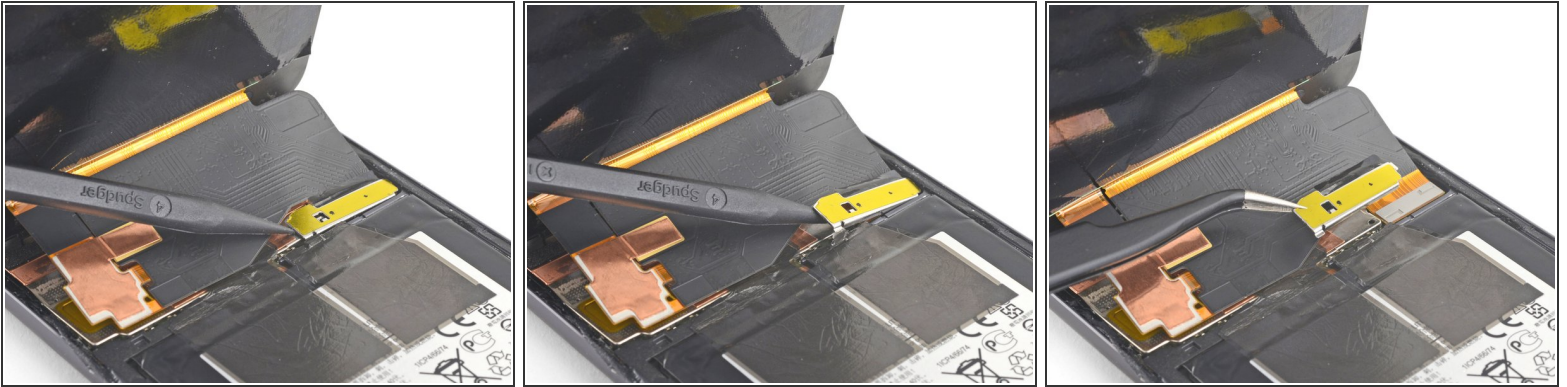
- Carefully twist the first opening pick slightly to help release the edge adhesive.
- Repeat the same process for each remaining pick, moving them as necessary and twisting slightly to release the adhesive.

## Step 12



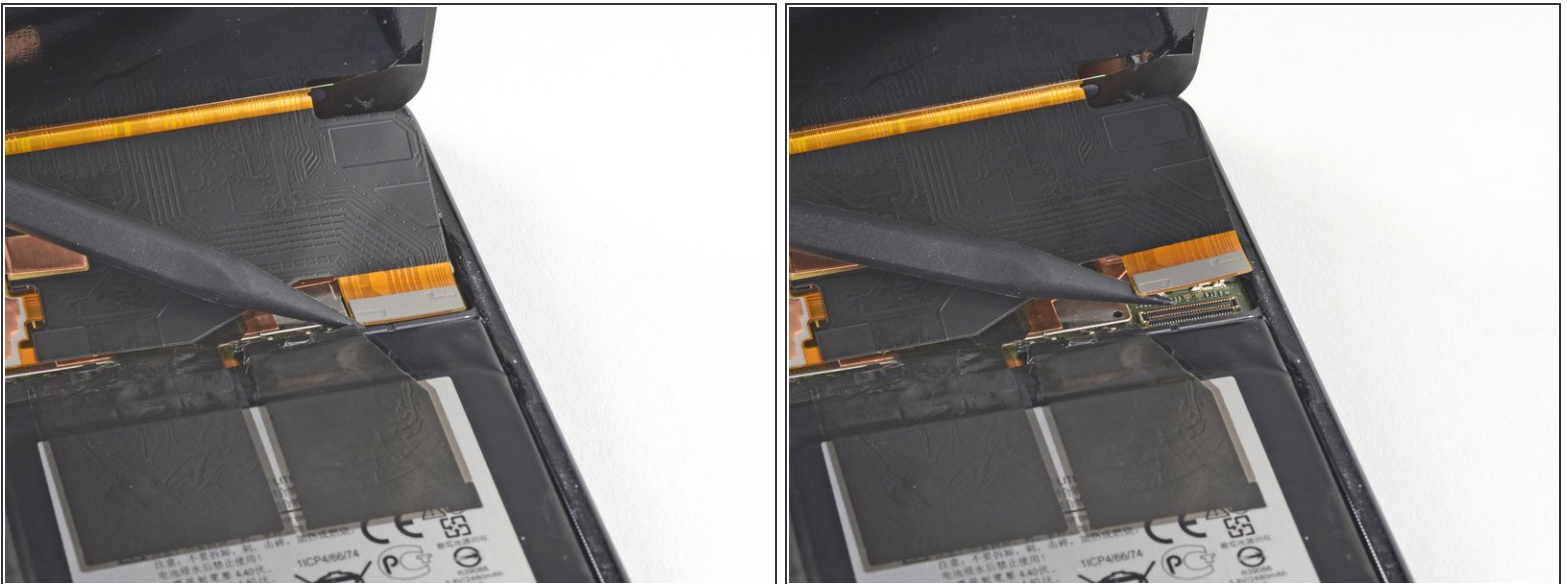
- Lift the earpiece end of the display up to provide access to the display cables.
- ⚠ Do not open the display beyond 90 degrees, and always support the display panel.

## Step 13



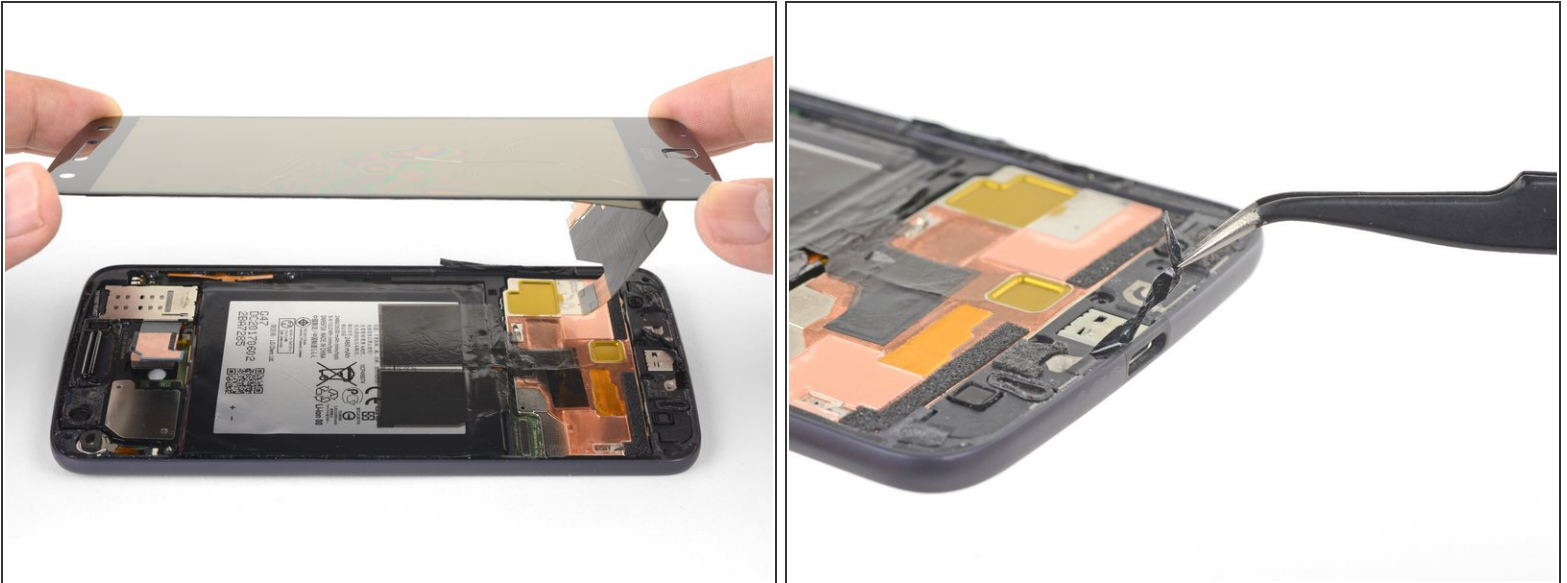
- Use the point of a spudger to pry the display cable shield up.
- Remove the display cable shield.

## Step 14



- Use the point of the spudger to lift and disconnect the display cable connector from its socket.

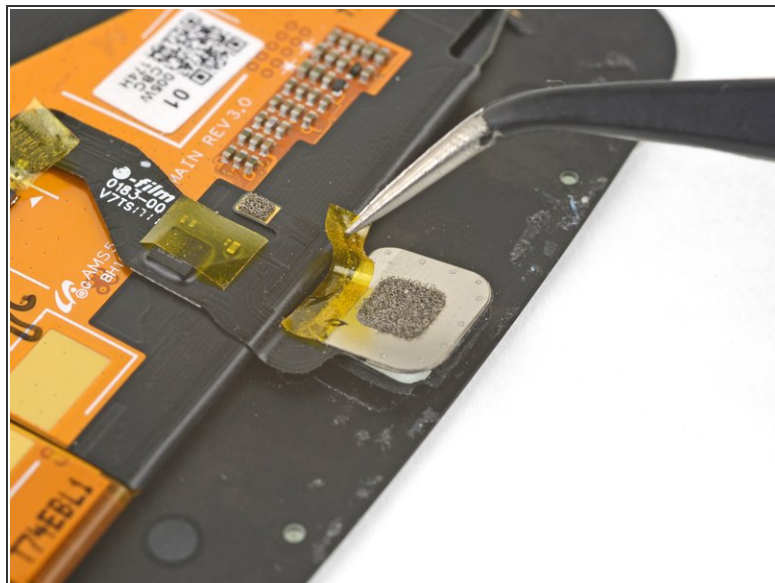
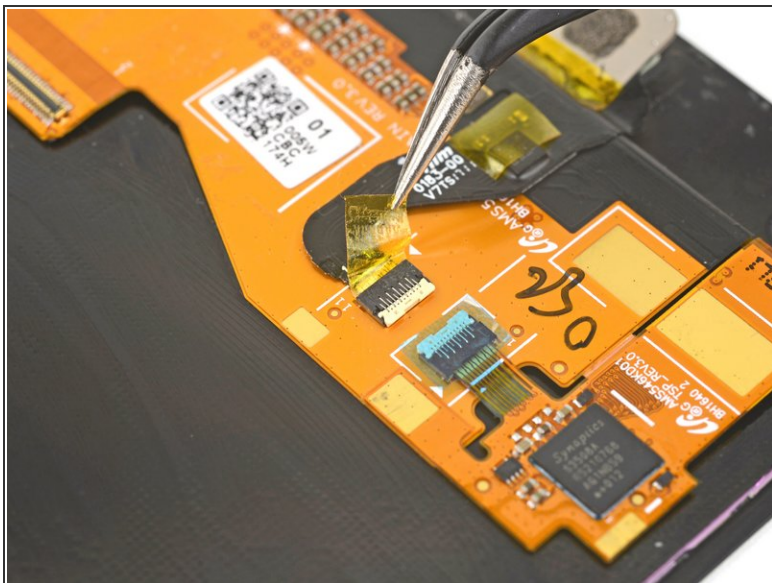
## Step 15



- Remove the display assembly.
- ☑ Compare your new replacement part to the original part. You may need to transfer remaining components (such as the flash lens) or remove adhesive backings from the new part before installing.
- ☑ Before you reinstall the display assembly, thoroughly remove any remaining adhesive and glass from the frame.
  - After removing all traces of glue and glass from the frame, clean the adhesion areas with 90% (or higher) isopropyl alcohol and a lint-free cloth or coffee filter.
- ☑ Be sure to turn on your phone and test your repair before installing new adhesive and resealing the phone.
- ☑ Use the [Motorola Moto Z display adhesive](#) to reseal your phone.

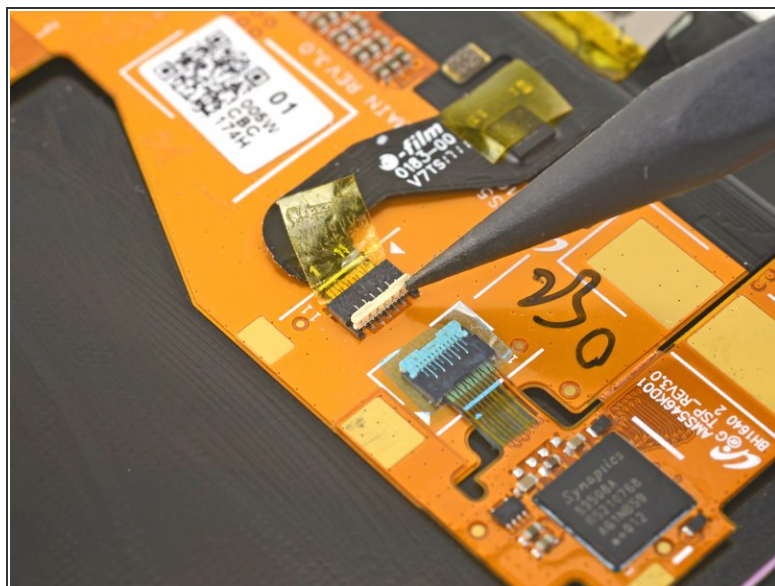
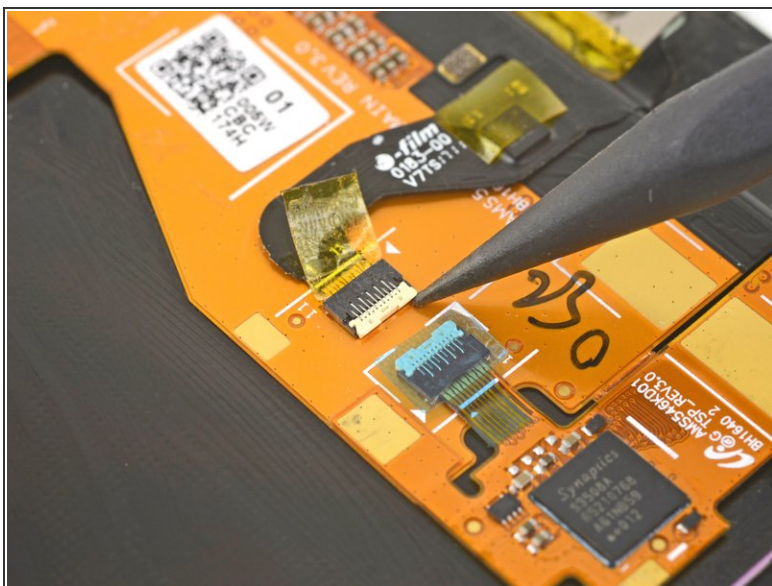


## Step 16 — Fingerprint Sensor



- Use tweezers to peel off any tape on the home button connector and home button

## Step 17



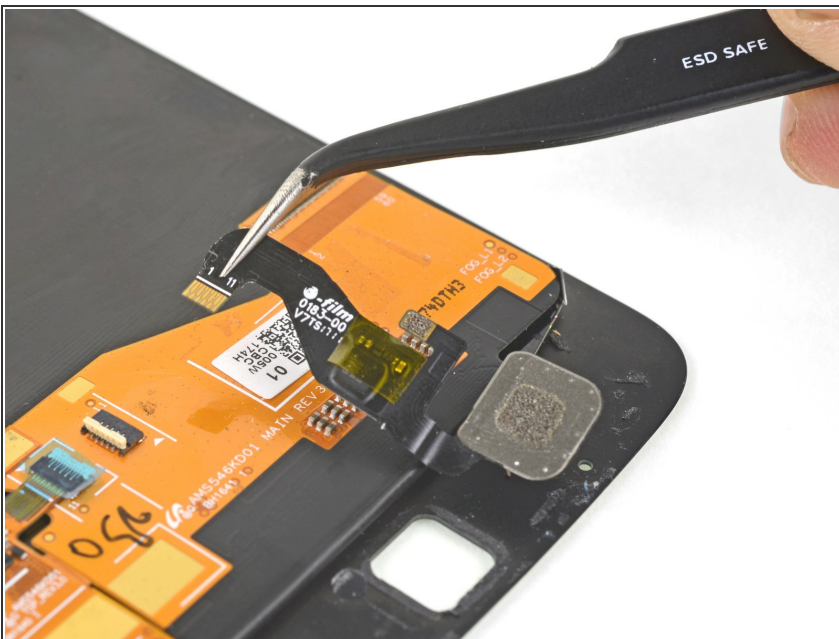
- Use the point of a spudger to flip up the home button connector's lock.

## Step 18



- Use tweezers to carefully pull the home button cable straight out of the socket.

## Step 19



- Remove the home button.

To reassemble your device, follow these instructions in reverse order.

Take your e-waste to an [R2 or e-Stewards certified recycler](#).

Repair didn't go as planned? Check out our [Motorola Moto Z Answers community](#) for troubleshooting help.