



# Motorola Atrix 4G Antenna Replacement

After removing the back cover, battery, and opening the phone the antenna can be accessed.

Written By: Derek Walker



# INTRODUCTION

This guide will enable you to remove the antenna in a Motorola Atrix 4G.



## TOOLS:

- [iFixit Opening Tools](#) (1)
  - [Spudger](#) (1)
  - [T5 Torx Screwdriver](#) (1)
-

## Step 1 — Battery



- Pry the rear cover from the back of the phone.

## Step 2



- Insert a spudger or plastic opening tool into the small notch at the base of the battery.
- Lift the battery out of the phone.

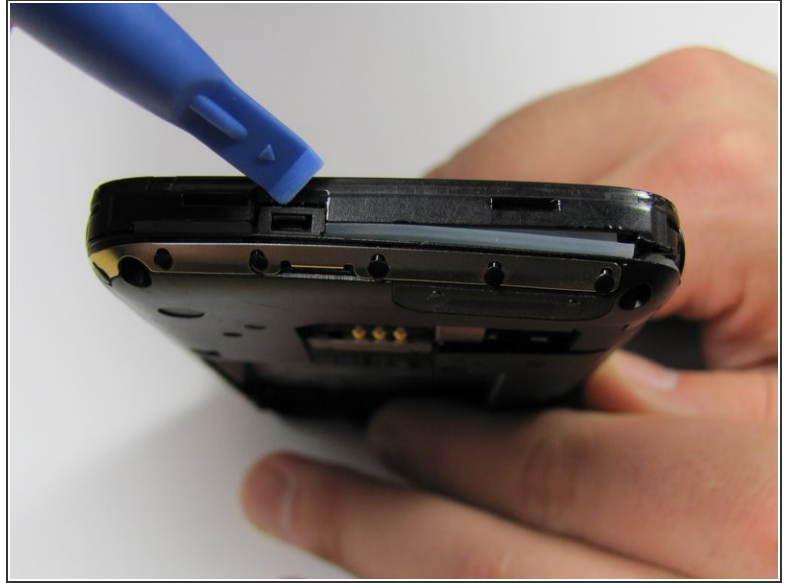
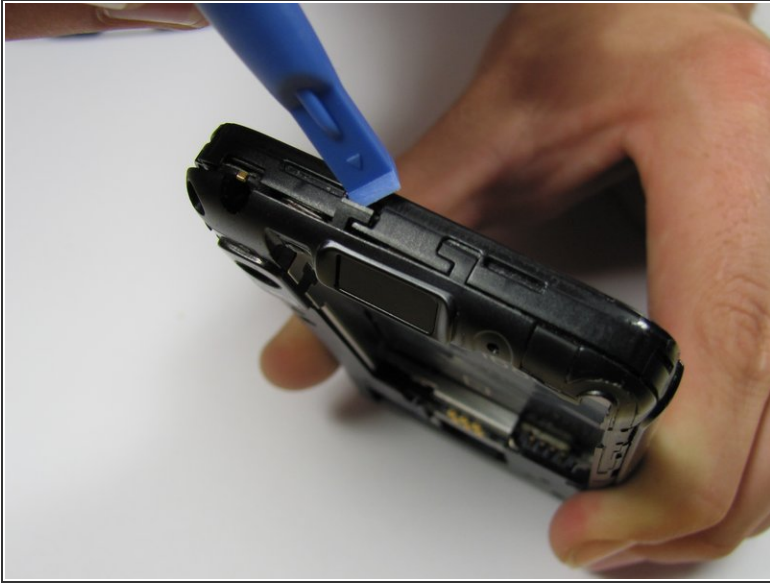
## Step 3 — Antenna



- Remove the four 5.0 mm T5 Torx screws from the corners of the phone.
- Remove three 5.5 mm T5 Torx screws from the back of the phone.
- Lift up the black rubber flap near the SD card slot.
- Remove the single 5.5 mm T5 Torx screw beneath the flap.

⚠ Do not attempt to loosen the screws with too much force. These screws are small, and easily stripped.

## Step 4



- Remove the back case of the phone by gently lifting the tabs located on top of the phone near the lock button.
- Use the case opener or spudger in these small areas because the plastic tabs can be easily broken.
- Lift the tabs located on the bottom of the phone to continue removing the back cover.



## Step 5



- Slide an opening tool between the gap from the back of the case to the front.
- After separating the sides, make sure there is a noticeable gap between the back case and the rest of the phone.
- After detaching the tabs and sliding down the sides, there should be a noticeable gap between the front and back cases.

## Step 6



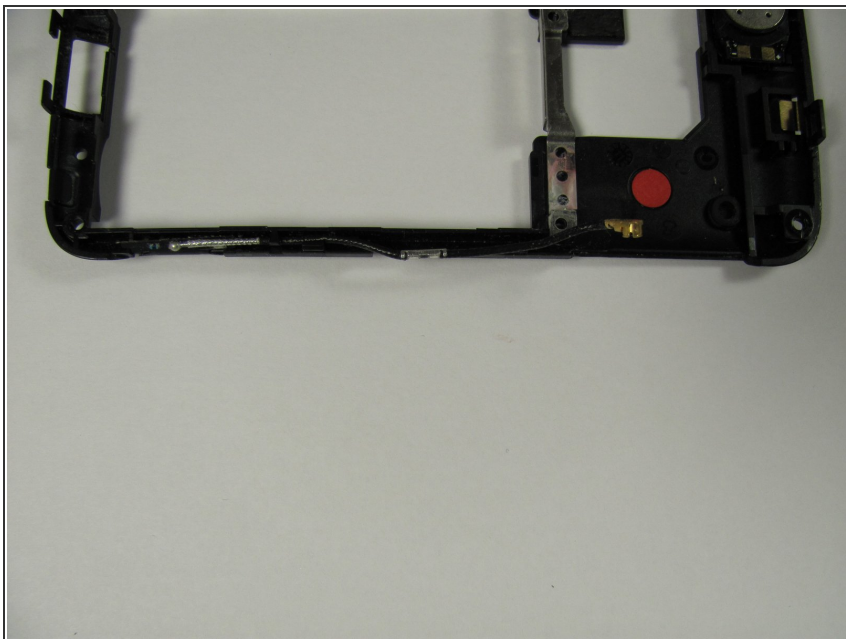
- Carefully separate the back case from the rest of the phone by lifting it away from the phone.
- ⚠ Do not completely remove the case from the rest of the phone. The antenna is connected to both cases.

## Step 7



- Disconnect the antenna from its housing on the motherboard by gently lifting beneath it.

## Step 8



- Ease the antenna from out of its guide along the side of the phone
- Once the antenna is detached, remove the back case and the antenna from the phone
- ★ The antenna is soldered to the back case. Do not pull with too much force.

To reassemble your device, follow these instructions in reverse order.