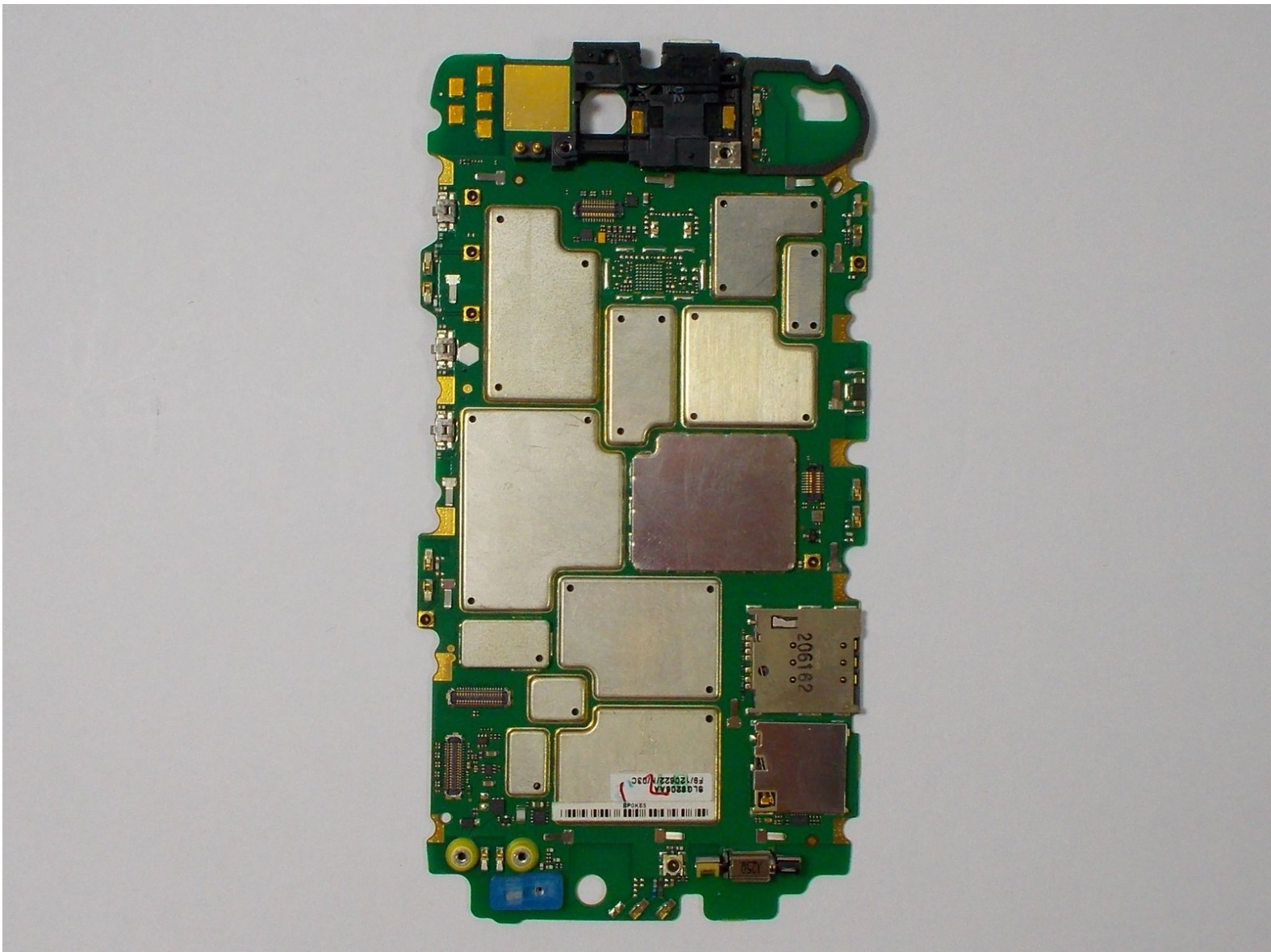




Motorola Atrix HD Motherboard Replacement

This guide will help you to replace the motherboard on your Motorola Atrix HD

Written By: Gabriel Agaman



INTRODUCTION

The motherboard is the heart of your phone. In certain circumstances, damage to the motherboard will cause intermittent problems, or even prevent the phone from turning on at all. If your motherboard has been damaged, it is important to consider why. If the phone has been damaged due to water intrusion, more components may have been damaged.

Anytime you are working near a circuit board, static electricity is a concern. If possible, be sure to discharge any static electricity that may have built up on you or your tools before diving into the motherboard. If possible, conduct your work on a static-free surface, such as plastic, or even paper.



TOOLS:

- [iFixit Opening Tools](#) (1)
 - [T5 Torx Screwdriver](#) (1)
-

Step 1 — Battery



- i** Before disassembling the phone, remove the SIM card and the MICRO-SD card, if equipped.
- Begin taking apart the device by prying apart the back cover from the assembly using the plastic opening tool.
 - Continue working around the edge of the phone using the plastic opening tool.
 - When all the edges have been lifted apart, use your hands or plastic opening tool to peel the back plate from the battery. There are small adhesive strips between the back cover and the battery, so take care not to crack the back cover while prying open.

Step 2



- The adhesive strips are shown in the orange boxes. Be sure not to use too much force to pull off the back cover, or you may risk snapping the back cover.

Step 3



- Remove the red rubber screw cover with a pair of tweezers


Step 4



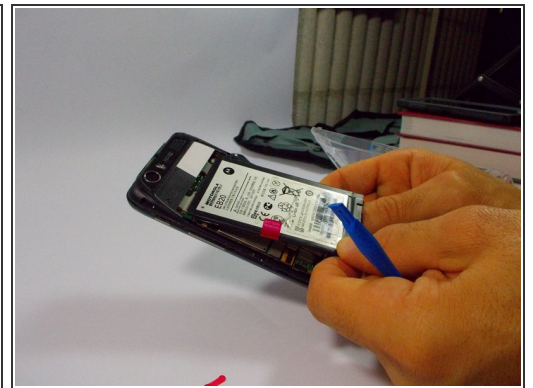
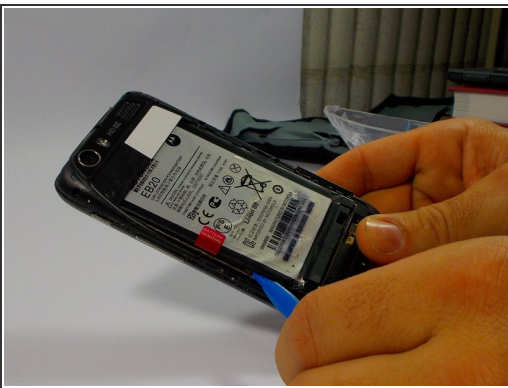
- Use the T-5 Torx bit to remove the two silver 3.3 mm screws with integrated washers.

Step 5



 Lift the battery leads to the upward position. The ribbon cable is very thin, be gentle.

Step 6



- Use the plastic opening tool around the edges to loosen the battery.
- Once the battery is loose, carefully lift from the bottom edge and remove the battery.

Step 7



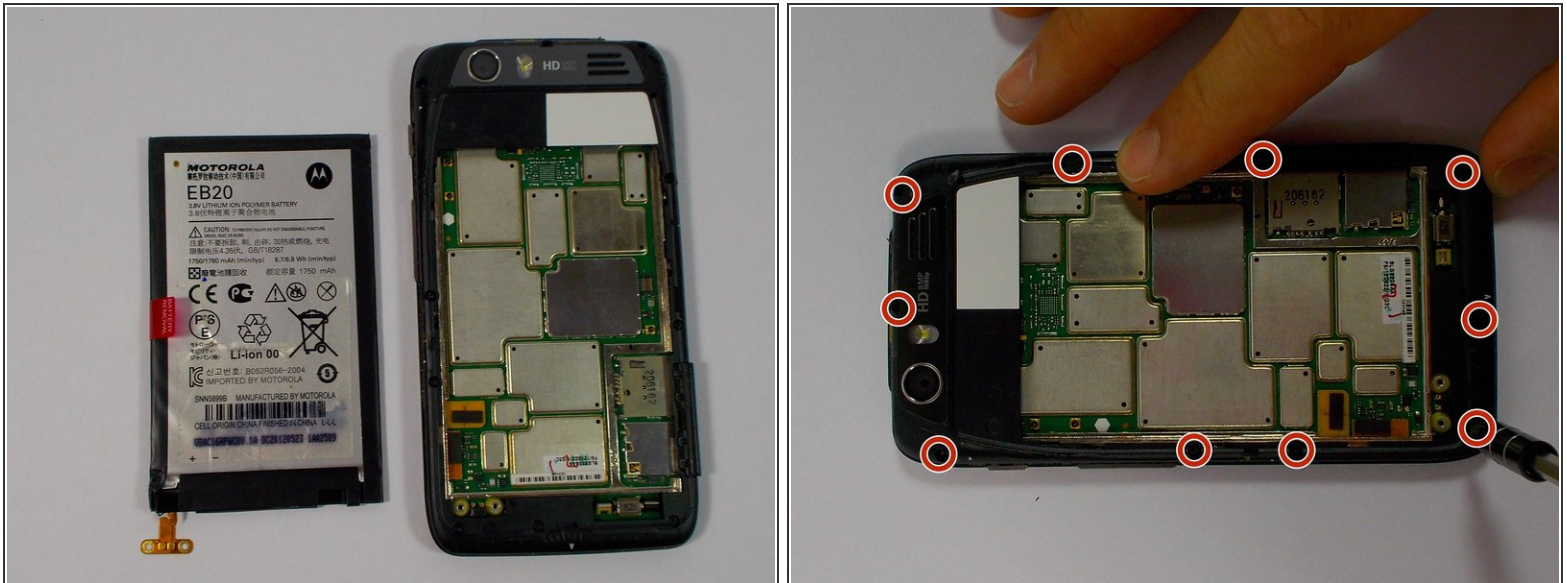
- The battery may now be removed.

Step 8 — Rear Chassis



- Begin by removing the back cover using the plastic opening tool. There are adhesive strips attached to the back cover, so take care when prying case to prevent cracking
- The adhesive strips may stay on the back cover or the battery.

Step 9



i The back case portion may be removed after the battery has been removed.

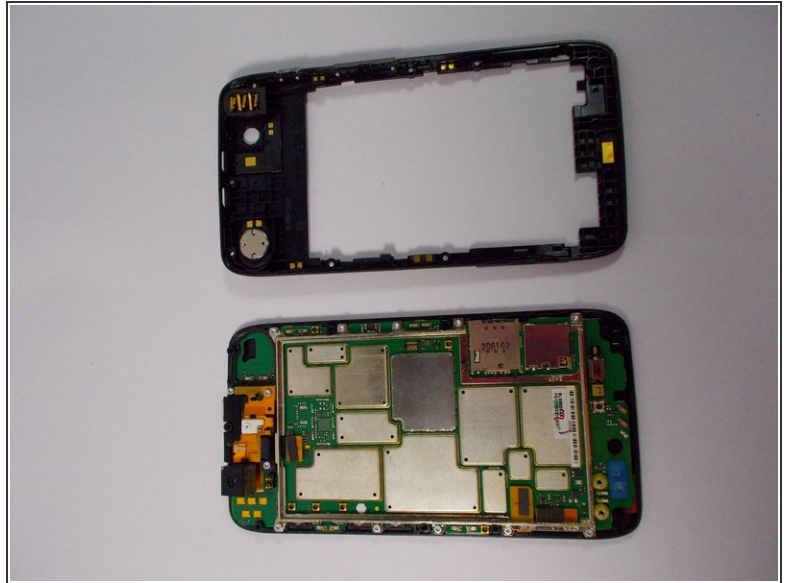
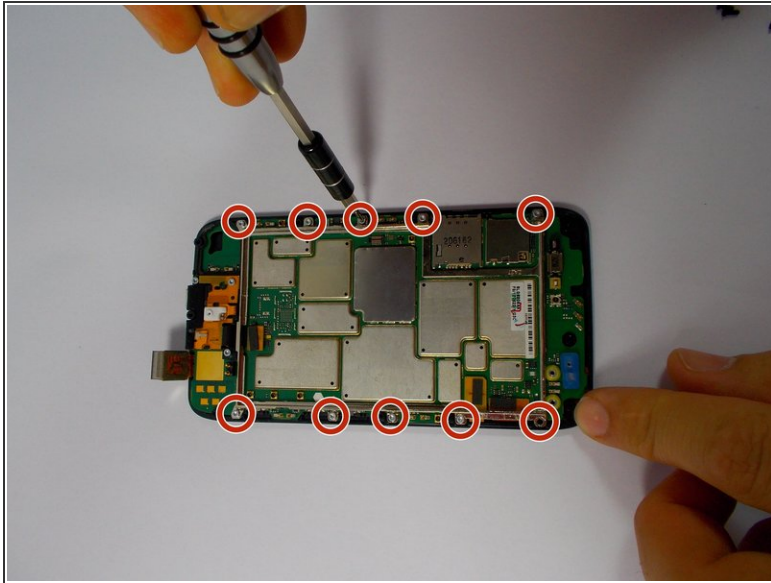
- Use the T5 Torx screwdriver to remove the 10 coarse-thread 5mm screws

Step 10



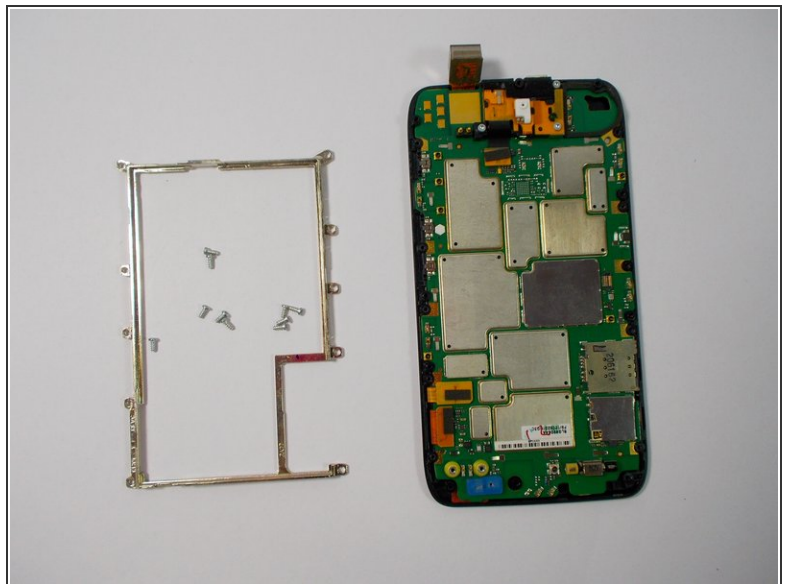
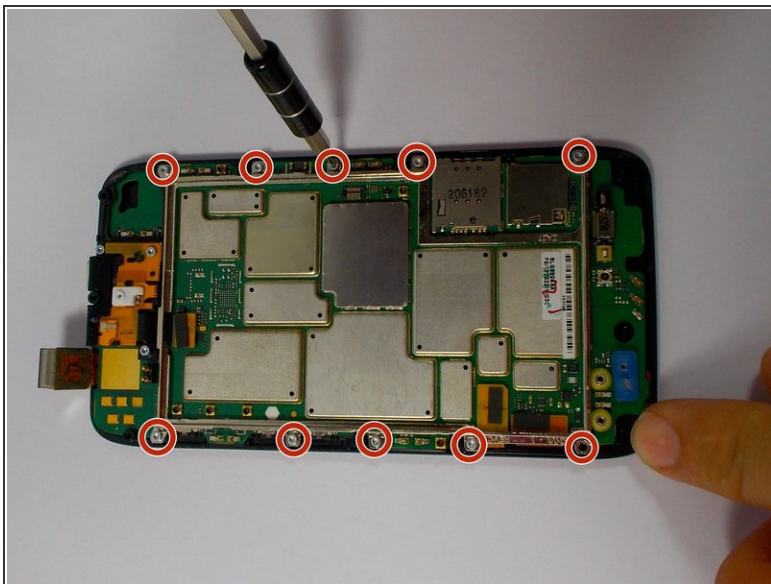
- Now with the screws removed, use the plastic opening tool to lift the edges of the front assembly.
- Continue to use the plastic opening tool around the edges of the device to remove the front assembly.
- The speaker is located in the upper corner of the case. It is attached with adhesive and can be removed by gently prying with the plastic opening tool

Step 11 — Touchscreen and LCD display



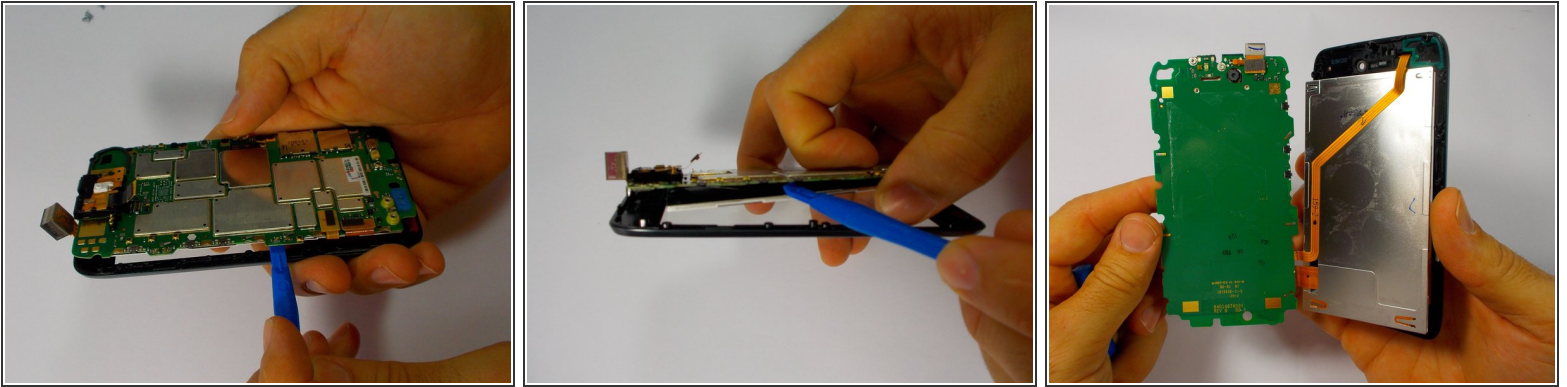
- Begin by removing the 10 Torx T5 motherboard baseplate screws
- The back chassis can now be removed.

Step 12



- Remove the 10 Torx T5 screws, that hold the metal frame to the motherboard.

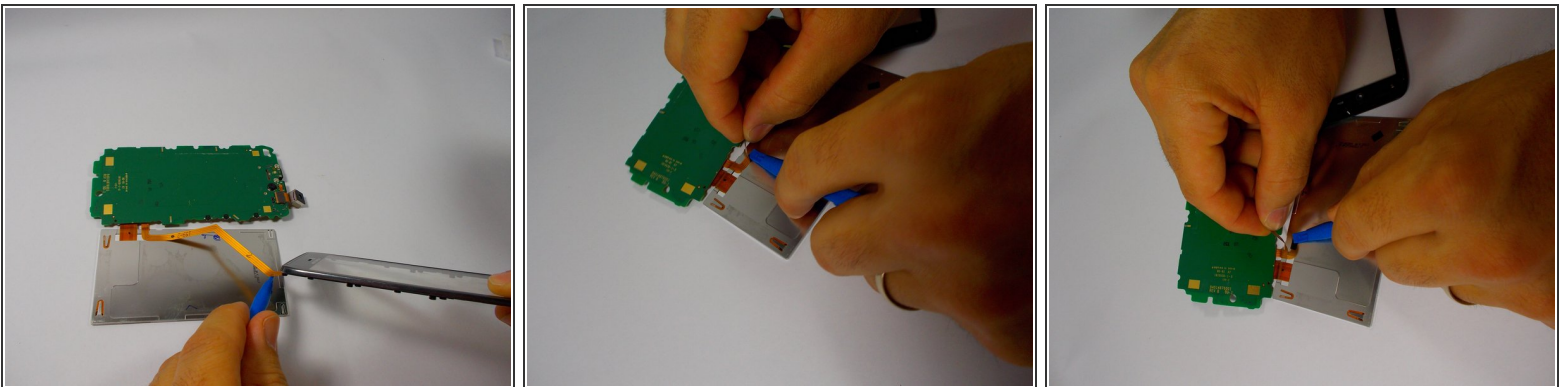
Step 13



- After following the steps to access the motherboard, you are ready to remove the touchscreen and LCD display.
- Use the plastic opening tool to separate the LCD display from the motherboard.

⚠ The touchscreen may separate from the LCD, however they are both connected to the motherboard as one unit.

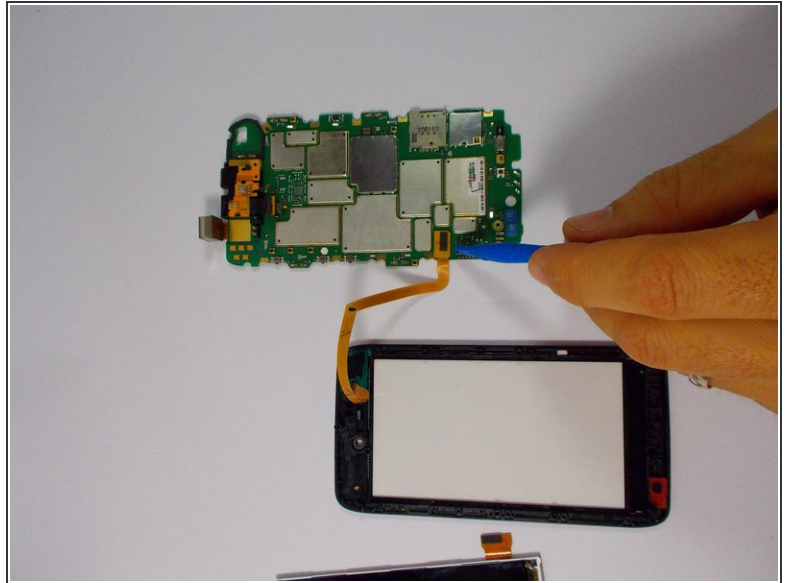
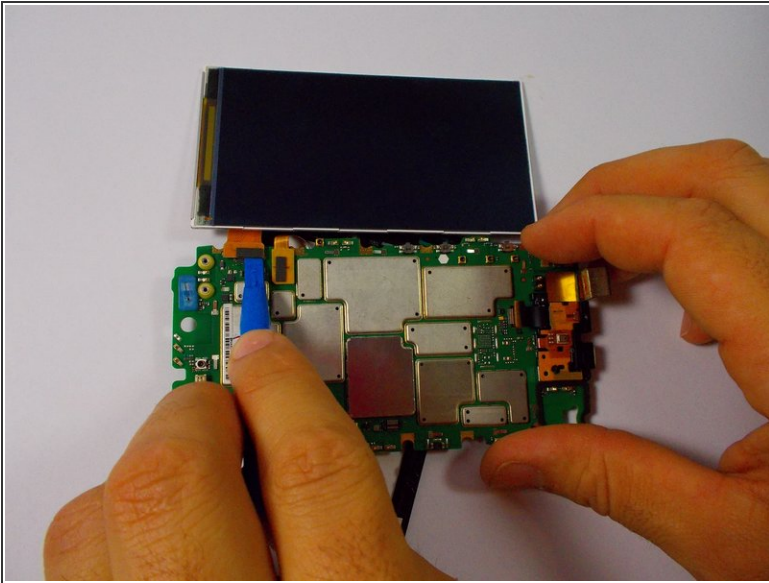
Step 14




- Remove the ribbon cable from the back of the lcd using the plastic opening tool or spudger.

⚠ Use care removing the ribbon cables. They are very thin and are broken easily.

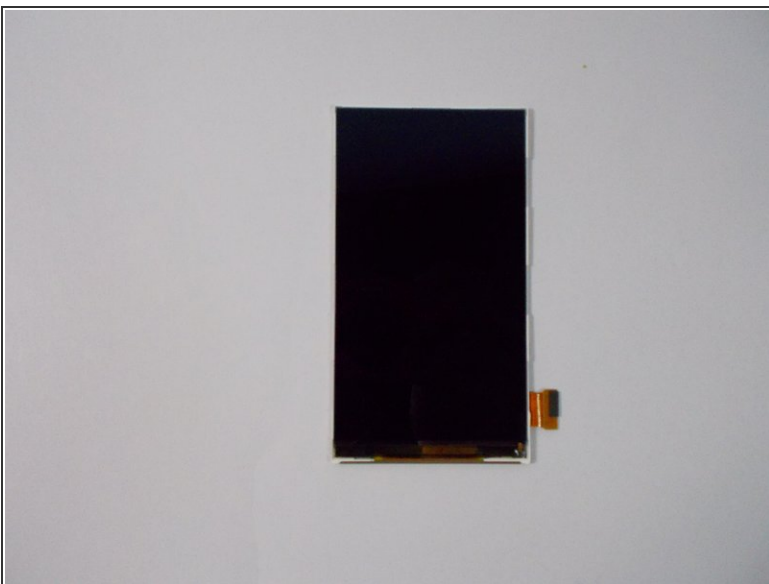
Step 15



 Remove the ribbon cable connecting the LCD display to the motherboard, be mindful that the ribbon cable is very thin.

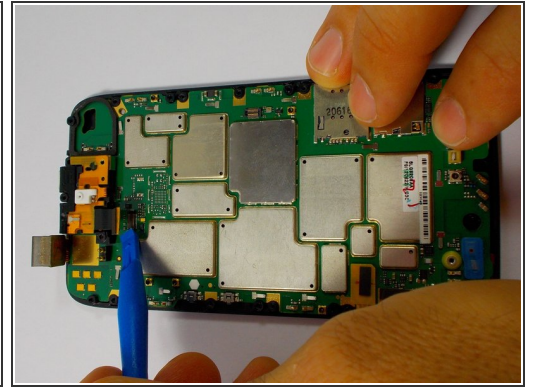
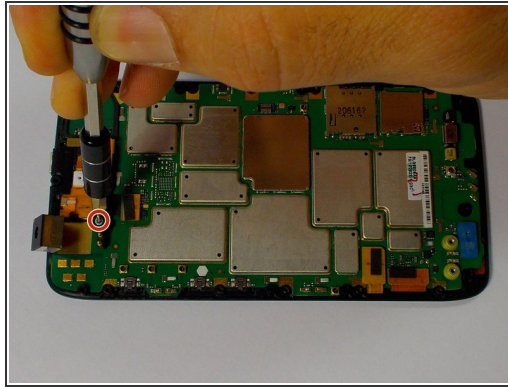
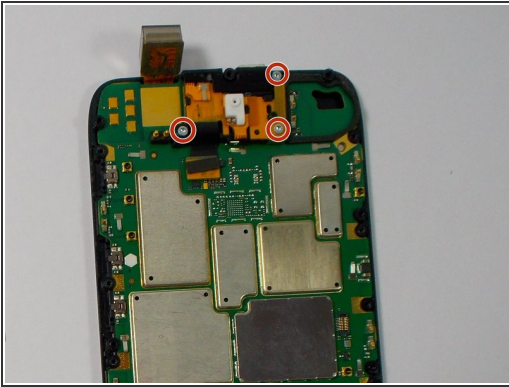
- With the LCD display removed, remove the ribbon cable connecting the touchscreen to the motherboard

Step 16



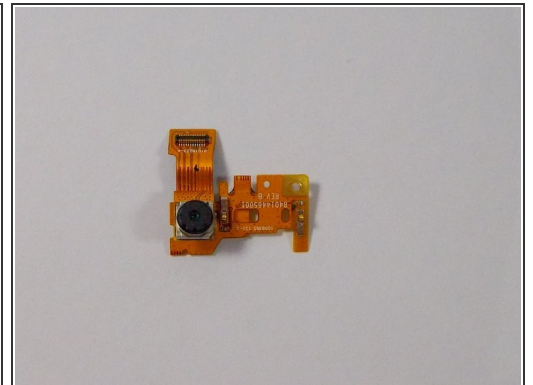
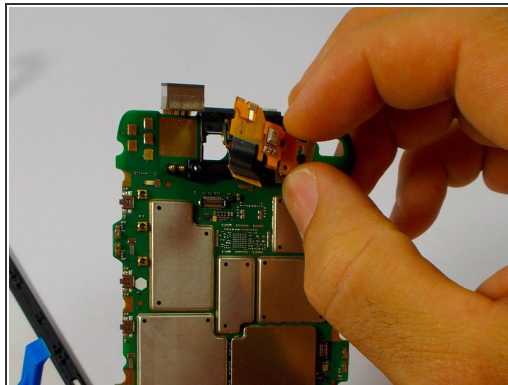
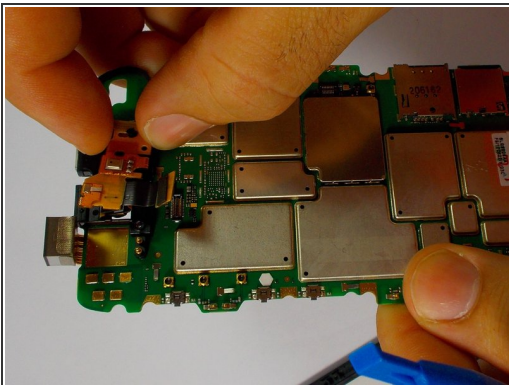
- The LCD display and the touchscreen may now be replaced.

Step 17 — Front and Rear Camera



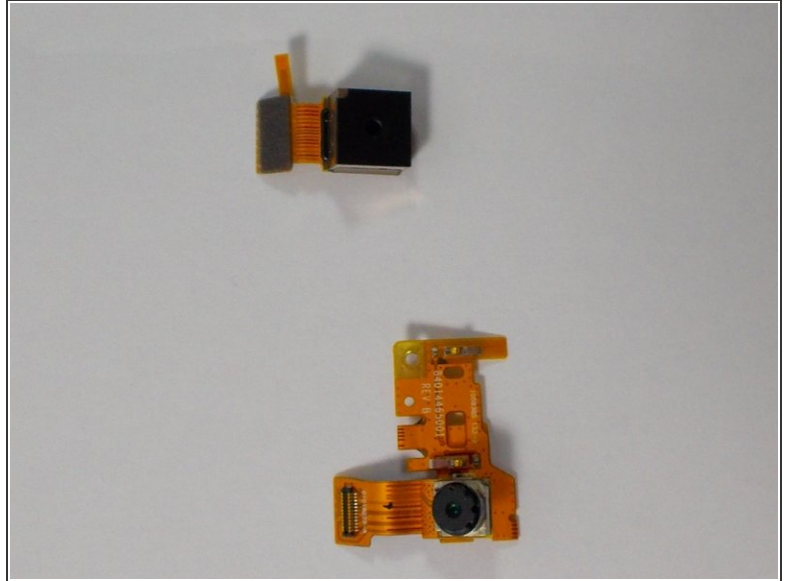
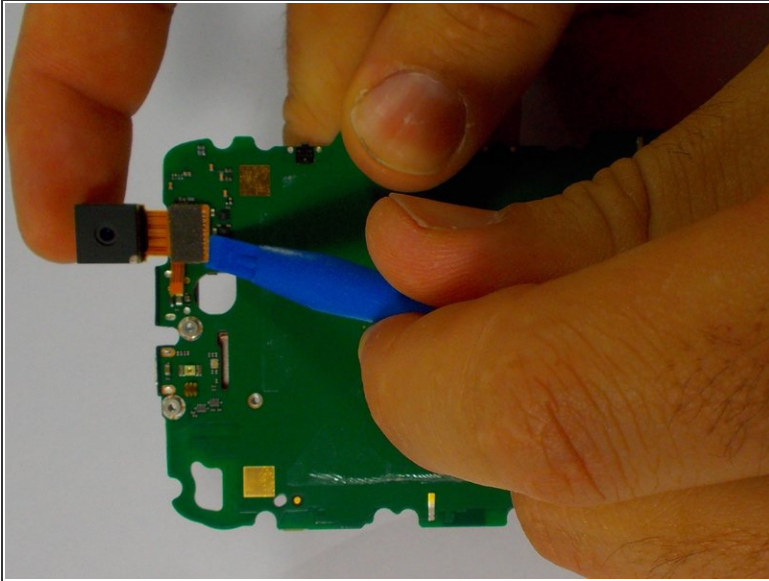
- Remove the three Torx T5 screws that locks the front facing camera to the motherboard.
- Use the plastic opening tool to lift the ribbon cable from the motherboard.

Step 18



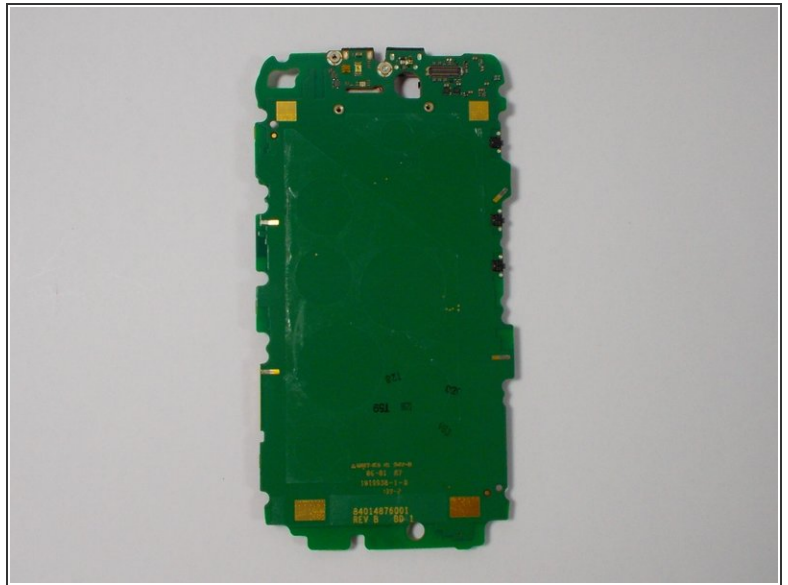
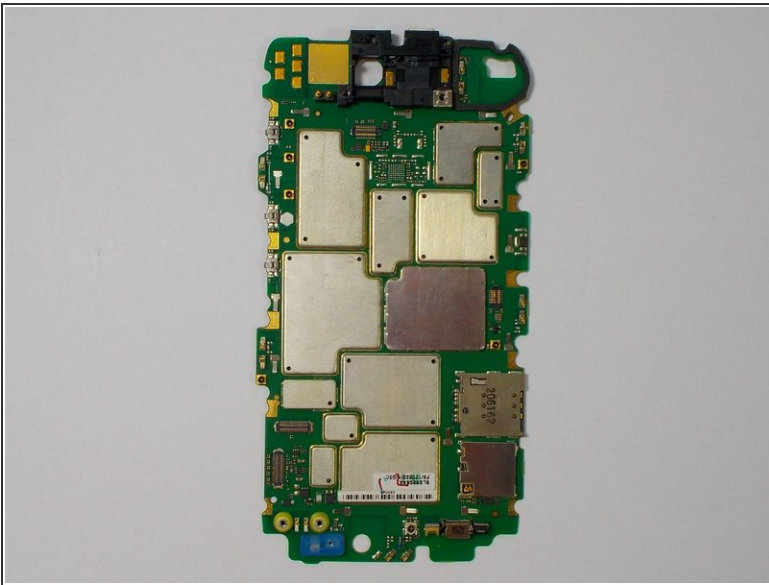
- Lift the rear camera out of the motherboard.

Step 19



- Use the plastic opening tool to lift the ribbon cable connector from the motherboard.
- Now both front and rear cameras have been removed.

Step 20 — Motherboard



- Now the motherboard is ready to be replaced and reassembled in reverse order.

To reassemble your device, follow these instructions in reverse order.